

Light efficiency:



Output: 987 lm

Light quality:

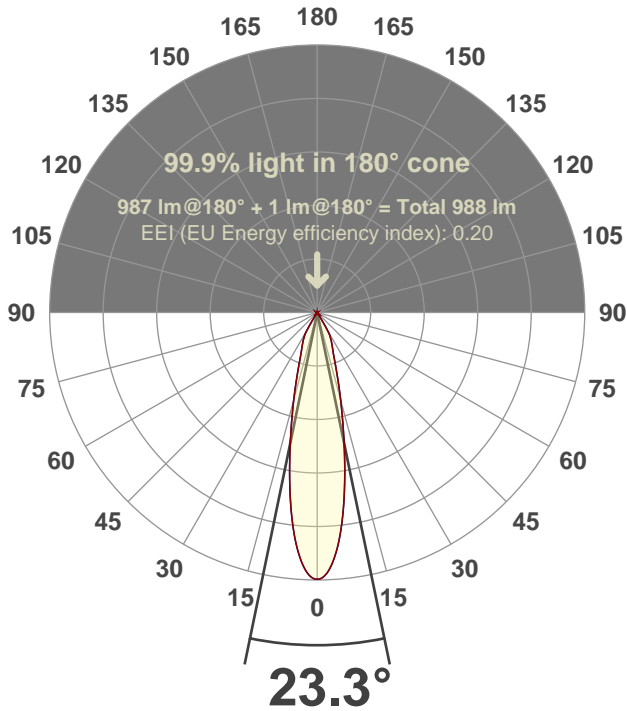


Peak: 4067 cd

Power: 15.0 W



Beam angle



Test number:

CR4D-R-OR-A14-30k-24 (GRO-AD-NF-RD)

Luminaire Model:

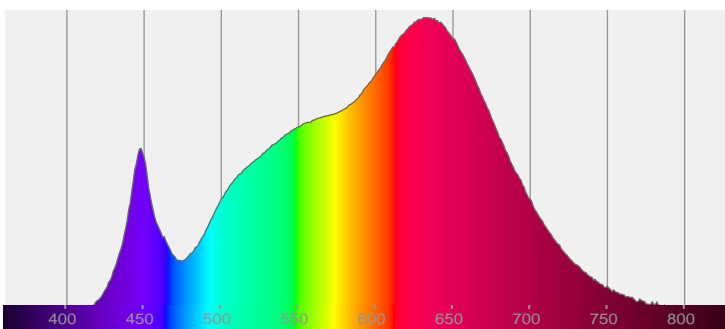
Core 4" Round Open Regress A14 30K 24°

Date and time:

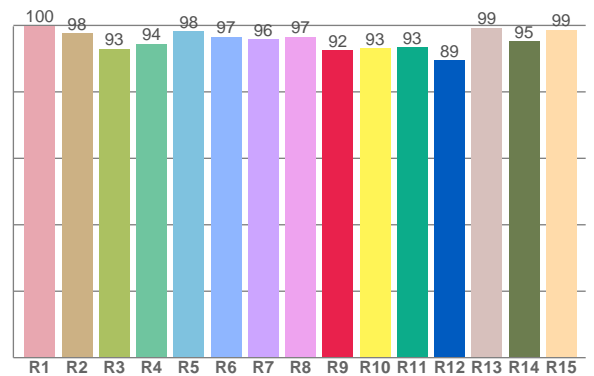
8/10/2017 1:02:12 PM

LUM: 987

Spectra



CRI: 96.5 (R1-R8)



Color parameters

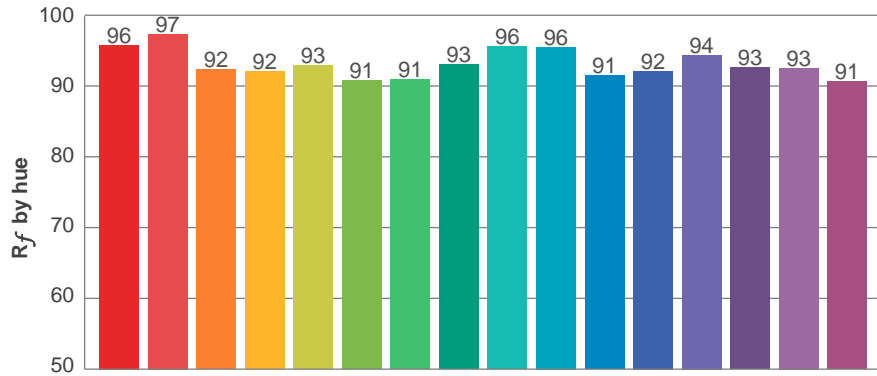
	Color rendering index	Red component	Color fidelity	Color gamut	Color quality scale	Color coordinate cie 1931	Color coordinate cie 1931	Color coordinate	Color coordinate	Color deviation from black body
	CRI	CRI R9	TM30 R _f	TM30 R _g	CQS	x	y	u	v	Δuv
	96.5	92.4	93.4	104.5	93.2	0.429	0.396	0.249	0.345	-0.0020

R_f 93.4
Fidelity index R_f

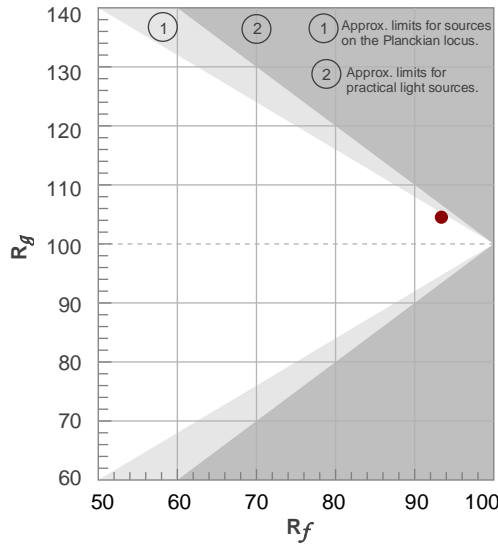
R_g 104.5
Gammut index R_g

TM30: 93.4

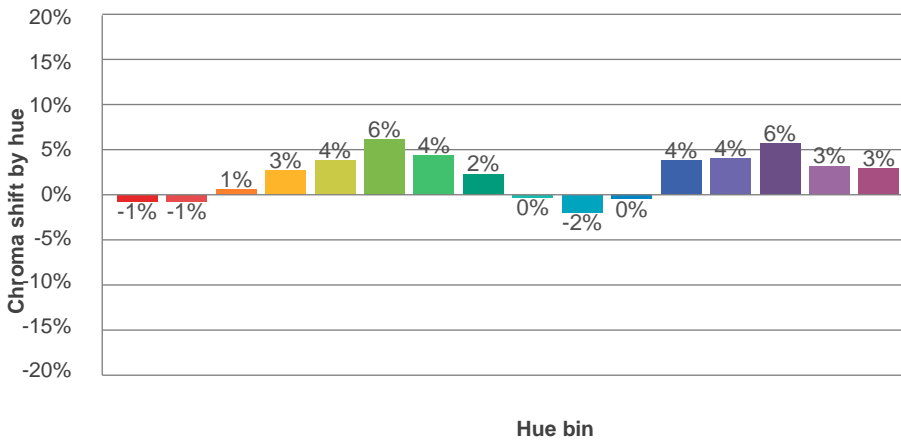
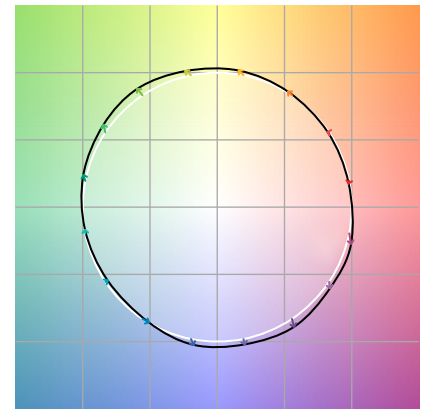
TM-30Color



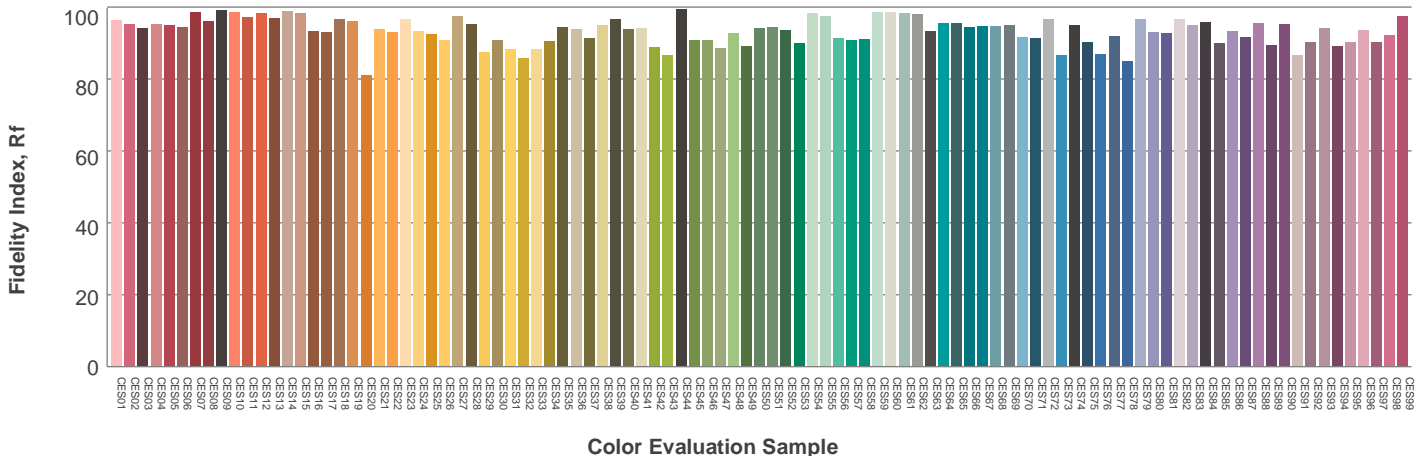
Hue Bin	R_f	Graphic shifts (%)	
		Chroma	Hue
1	96	-1%	-2%
2	97	-1%	1%
3	92	1%	4%
4	92	3%	4%
5	93	4%	4%
6	91	6%	1%
7	91	4%	-4%
8	93	2%	-4%
9	96	0%	-3%
10	96	-2%	0%
11	91	0%	5%
12	92	4%	3%
13	94	4%	0%
14	93	6%	-2%
15	93	3%	-4%
16	91	3%	-7%



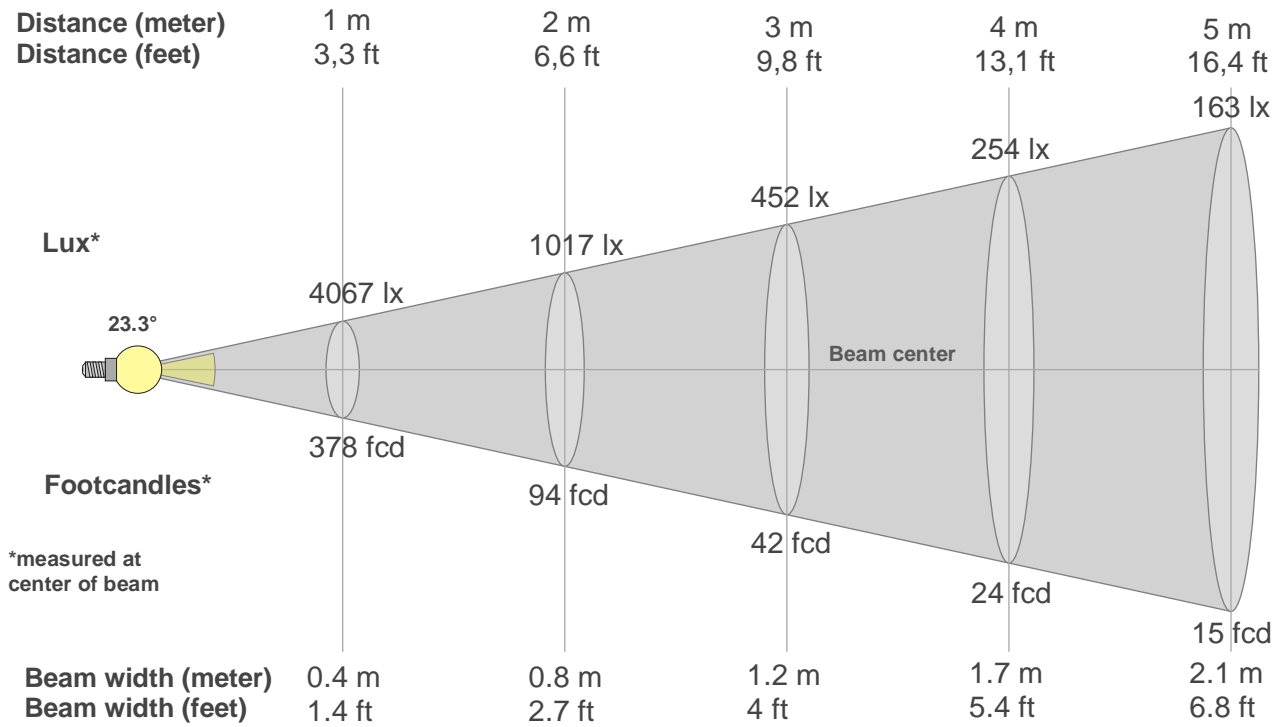
Color vector graphics



Color distortion



Beam details



Beam intensities from 1-20m

1m	2m	3m	4m	5m	6m	7m	8m	9m	10m	11m	12m	13m	14m	15m	16m	17m	18m	19m	20m
3.3ft	6.6ft	9.8ft	13.1ft	16.4ft	19.7ft	23ft	26.2ft	29.5ft	32.8ft	36.1ft	39.4ft	42.7ft	45.9ft	49.2ft	52.5ft	55.8ft	59.1ft	62.3ft	65.6ft
4067lx	1017lx	452lx	254lx	163lx	113lx	83lx	64lx	50lx	41lx	34lx	28lx	24lx	21lx	18lx	16lx	14lx	13lx	11lx	10lx
377.8fcd	94.5fcd	42fcd	23.6fcd	15.1fcd	10.5fcd	7.7fcd	5.9fcd	4.7fcd	3.8fcd	3.1fcd	2.6fcd	2.2fcd	1.9fcd	1.7fcd	1.5fcd	1.3fcd	1.2fcd	1fcd	0.9fcd

Intensities in 0° c-plane

0°	2°	4°	6°	8°	10°	12°	14°	16°	18°	20°	22°	24°	26°	28°	30°	32°	34°	36°	38°
4067	3990	3750	3385	2925	2428	1960	1562	1238	978	786	654	568	501	431	346	170	29	6	5
100%	98%	92%	83%	72%	60%	48%	38%	30%	24%	19%	16%	14%	12%	11%	8%	4%	1%	0%	0%

Intensities in 90° c-plane

0°	2°	4°	6°	8°	10°	12°	14°	16°	18°	20°	22°	24°	26°	28°	30°	32°	34°	36°	38°
4067	3990	3750	3385	2925	2428	1960	1562	1238	978	786	654	568	501	431	346	170	29	6	5
100%	98%	92%	83%	72%	60%	48%	38%	30%	24%	19%	16%	14%	12%	11%	8%	4%	1%	0%	0%

Intensities in 180° c-plane

0°	2°	4°	6°	8°	10°	12°	14°	16°	18°	20°	22°	24°	26°	28°	30°	32°	34°	36°	38°
4067	3990	3750	3385	2925	2428	1960	1562	1238	978	786	654	568	501	431	346	170	29	6	5
100%	98%	92%	83%	72%	60%	48%	38%	30%	24%	19%	16%	14%	12%	11%	8%	4%	1%	0%	0%

Intensities in 270° c-plane

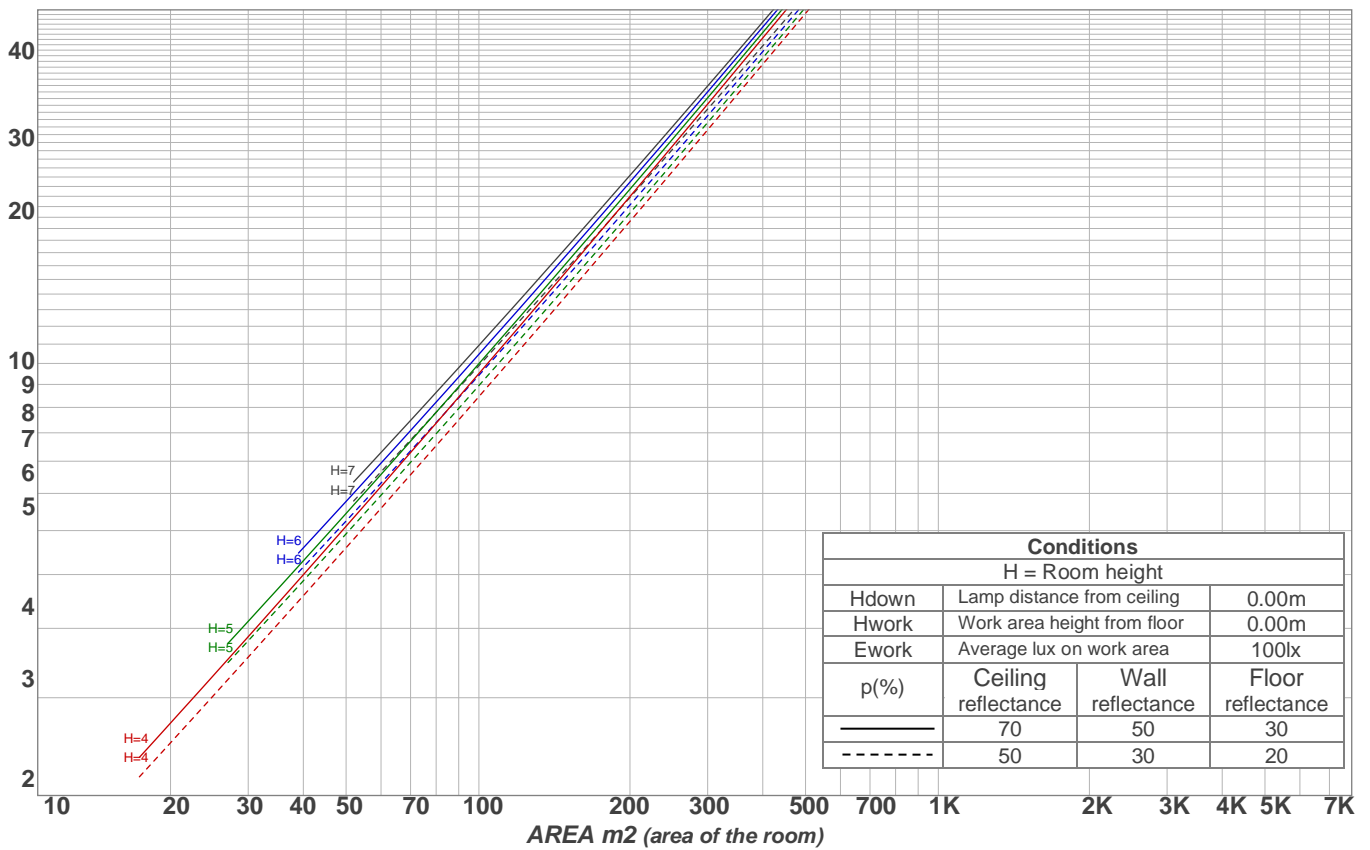
0°	2°	4°	6°	8°	10°	12°	14°	16°	18°	20°	22°	24°	26°	28°	30°	32°	34°	36°	38°
4067	3990	3750	3385	2925	2428	1960	1562	1238	978	786	654	568	501	431	346	170	29	6	5
100%	98%	92%	83%	72%	60%	48%	38%	30%	24%	19%	16%	14%	12%	11%	8%	4%	1%	0%	0%

Beam angle 50%	Field angle 10%	Cutoff angle 2,5%	Intensity ratio in 120° cone	Intensity ratio in 90° cone
23.3°	57.6°	66.8°	99.6%	99.5%

Light planning

Luminaire budgetary diagram

LAMPS (number of lamps)
50



Luminaire budgetary diagram
AREA m2 (area of the room)
Coefficients of Utilization

Ceiling reflectance	80				70				50			30			10			0			
Wall reflectance	70	50	30	10	70	50	30	10	50	30	10	50	30	10	50	30	10	50	30	10	0
Floor reflectance	20	20	20	20	20	20	20	20	20	20	20	20	20	20	20	20	20	20	20	20	0
RCR	(RCR: Room Cavity Ratio)																				
	Room Values are expressed as percentage of Lumens delivered to the task surface																				
0	119	119	119	119	116	116	116	116	111	111	111	106	106	106	102	102	102	100	100	100	100
1	115	113	111	109	112	110	109	107	106	105	104	103	102	101	99	99	98	98	98	98	96
2	111	107	104	101	109	105	102	100	102	100	98	99	97	96	97	95	94	94	94	94	92
3	107	102	98	95	105	101	97	95	98	95	93	96	94	92	94	92	90	90	90	90	89
4	103	98	94	90	102	97	93	90	95	91	89	93	90	88	91	89	87	87	87	87	86
5	100	94	89	86	99	93	89	86	91	88	85	90	87	84	88	86	84	84	84	84	83
6	97	90	86	83	96	90	85	82	88	85	82	87	84	81	86	83	81	81	81	81	80
7	94	87	83	79	93	86	82	79	85	82	79	84	81	79	83	80	78	78	78	78	77
8	91	84	80	77	90	83	79	76	83	79	76	82	78	76	81	78	76	76	76	76	75
9	88	81	77	74	87	81	77	74	80	76	74	79	76	73	79	75	73	73	73	73	72
10	86	79	74	72	85	78	74	71	78	74	71	77	74	71	76	73	71	71	71	71	70

Zonal Lumen Summary

0°-10°	10°-20°	20°-30°	30°-40°	40°-50°	50°-60°	60°-70°	70°-80°	80°-90°
304 lm	390 lm	246 lm	42.8 lm	0.933 lm	1.11 lm	1.10 lm	0.994 lm	0.725 lm
90°-100°	100°-110°	110°-120°	120°-130°	130°-140°	140°-150°	150°-160°	160°-170°	170°-180°
0.000 lm	0.000 lm	0.000 lm	0.000 lm	0.000 lm	0.000 lm	0.000 lm	0.000 lm	0.000 lm

UGR

p Ceiling		70	70	50	50	30	70	70	50	50	30
p Walls		50	30	50	30	30	50	30	50	30	30
p Floor		20	20	20	20	20	20	20	20	20	20
Room size X Y		Viewing direction at right angles to lamp axis					Viewing direction parallel to lamp axis				
2H	2H	20.7	21.1	20.8	21.3	21.5	20.7	21.1	20.8	21.3	21.5
	3H	20.4	21.0	20.8	21.2	21.4	20.4	21.0	20.8	21.2	21.4
	4H	20.4	21.0	20.8	21.2	21.4	20.4	21.0	20.8	21.2	21.4
	6H	20.6	21.0	20.8	21.3	21.7	20.6	21.0	20.8	21.3	21.7
	8H	20.6	21.0	20.9	21.4	21.7	20.6	21.0	20.9	21.4	21.7
	12H	20.6	21.0	20.9	21.4	21.8	20.6	21.0	20.9	21.4	21.8
4H	2H	20.3	20.9	20.7	21.1	21.4	20.3	20.9	20.7	21.1	21.4
	3H	20.3	20.7	20.6	21.1	21.5	20.3	20.7	20.6	21.1	21.5
	4H	20.2	20.7	20.7	21.1	21.6	20.2	20.7	20.7	21.1	21.6
	6H	20.4	20.9	20.9	21.2	21.5	20.4	20.9	20.9	21.2	21.5
	8H	20.5	20.9	21.0	21.2	21.6	20.5	20.9	21.0	21.2	21.6
	12H	20.5	20.9	21.0	21.3	21.7	20.5	20.9	21.0	21.3	21.7
8H	4H	20.2	20.6	20.7	20.9	21.3	20.2	20.6	20.7	20.9	21.3
	6H	20.4	20.7	21.0	21.2	21.7	20.4	20.7	21.0	21.2	21.7
	8H	20.7	20.9	21.2	21.4	22.0	20.7	20.9	21.2	21.4	22.0
	12H	20.8	21.0	21.4	21.5	22.1	20.8	21.0	21.4	21.5	22.1
12H	4H	20.1	20.5	20.6	20.9	21.3	20.1	20.5	20.6	20.9	21.3
	6H	20.5	20.7	21.0	21.2	21.8	20.5	20.7	21.0	21.2	21.8
	8H	20.7	20.9	21.3	21.4	22.0	20.7	20.9	21.3	21.4	22.0
Corrected glare indices referring to 987 lm total luminous flux											