

Light efficiency:



Output: 1508 lm

Light quality:

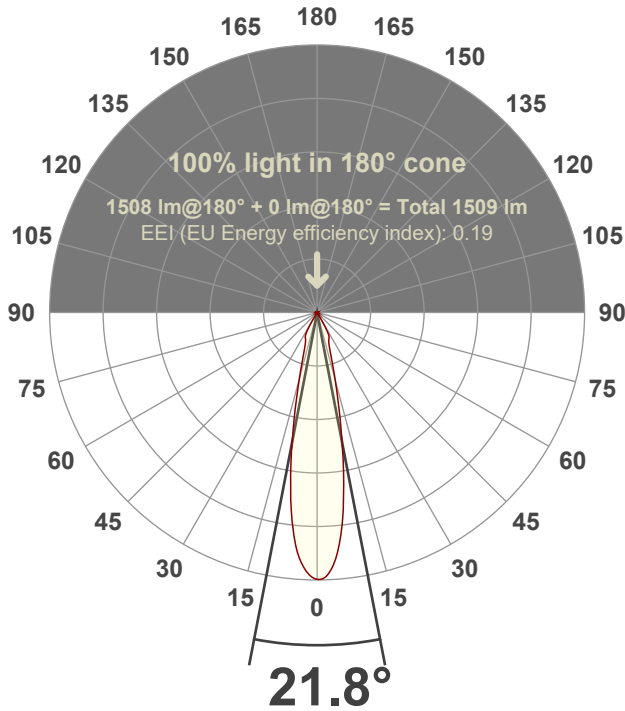


Peak: 7287 cd

Power: 20.4 W



Beam angle



Test number:

MSC-H-M-C20-30k-22°

Luminaire Model:

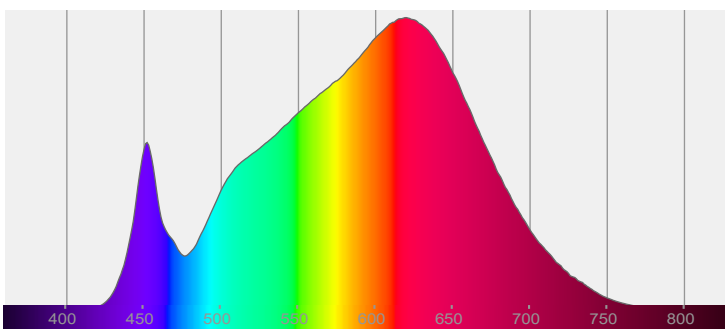
Mosaic Medium Accent Head C20-30k-22°

Date and time:

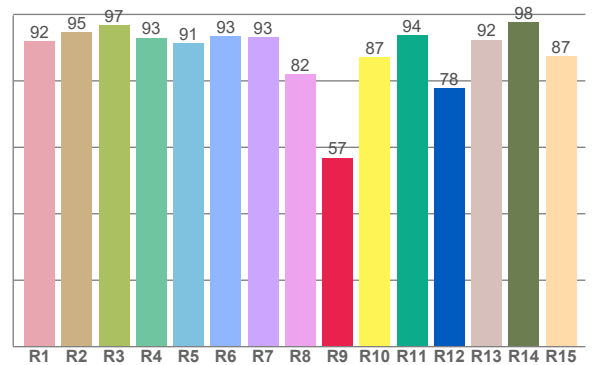
8/29/2022 6:34:30 PM

LUM: 1508

Spectra



CRI: 92.0 (R1-R8)



Color parameters

	Color rendering index	Red component	Color fidelity	Color gamut	Color quality scale	Color coordinate cie 1931	Color coordinate cie 1931	Color coordinate	Color coordinate	Color deviation from black body
	CRI	CRI R9	TM30 R _f	TM30 R _g	CQS	x	y	u	v	Δuv
	92.0	56.8	91.7	99.0	91.0	0.432	0.406	0.246	0.348	0.0018

R_f 91.7

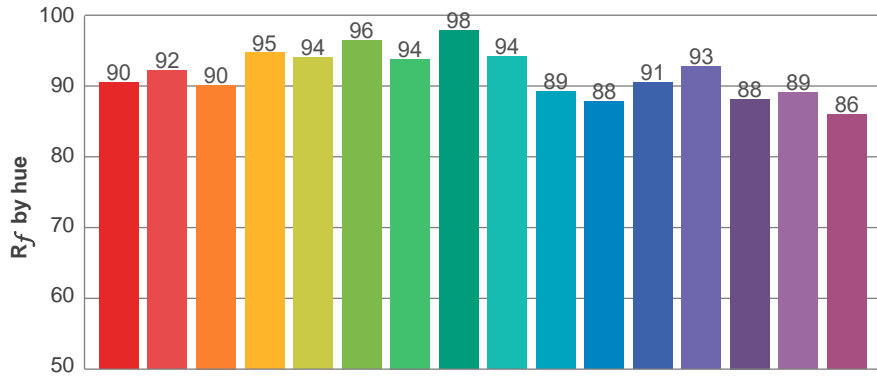
Fidelity index R_f

R_g 99.0

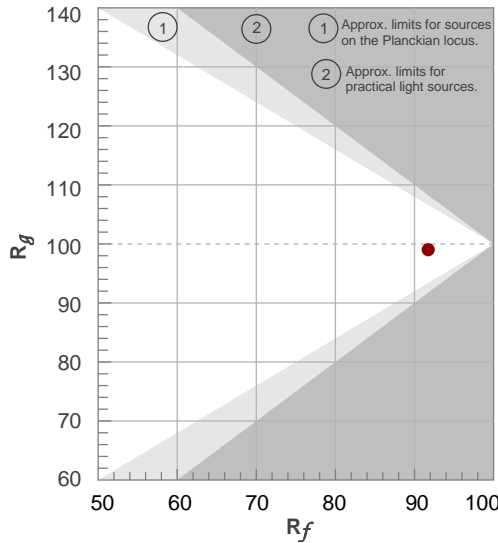
Gammut index R_g

TM30: 91.7

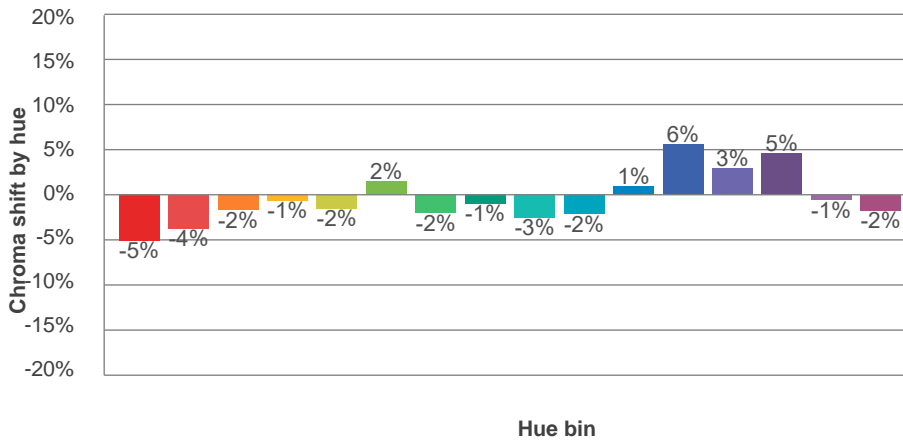
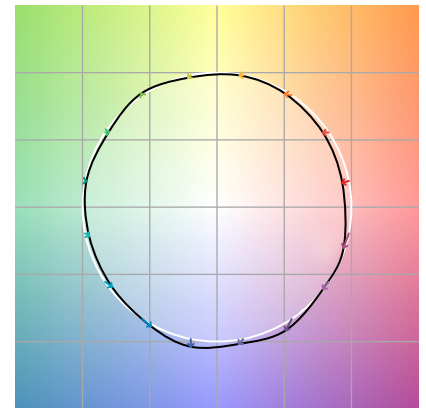
TM-30Color



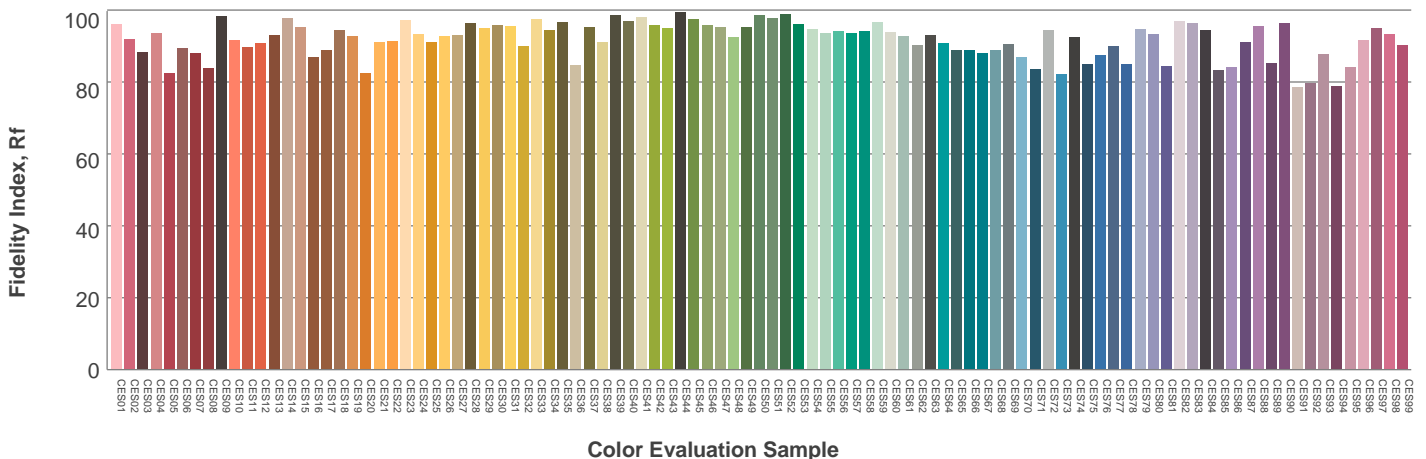
Hue Bin	R _f	Graphic shifts (%)	
		Chroma	Hue
1	90	-5%	-1%
2	92	-4%	2%
3	90	-2%	5%
4	95	-1%	3%
5	94	-2%	2%
6	96	2%	0%
7	94	-2%	-2%
8	98	-1%	0%
9	94	-3%	3%
10	89	-2%	6%
11	88	1%	8%
12	91	6%	1%
13	93	3%	-4%
14	88	5%	-8%
15	89	-1%	-7%
16	86	-2%	-11%



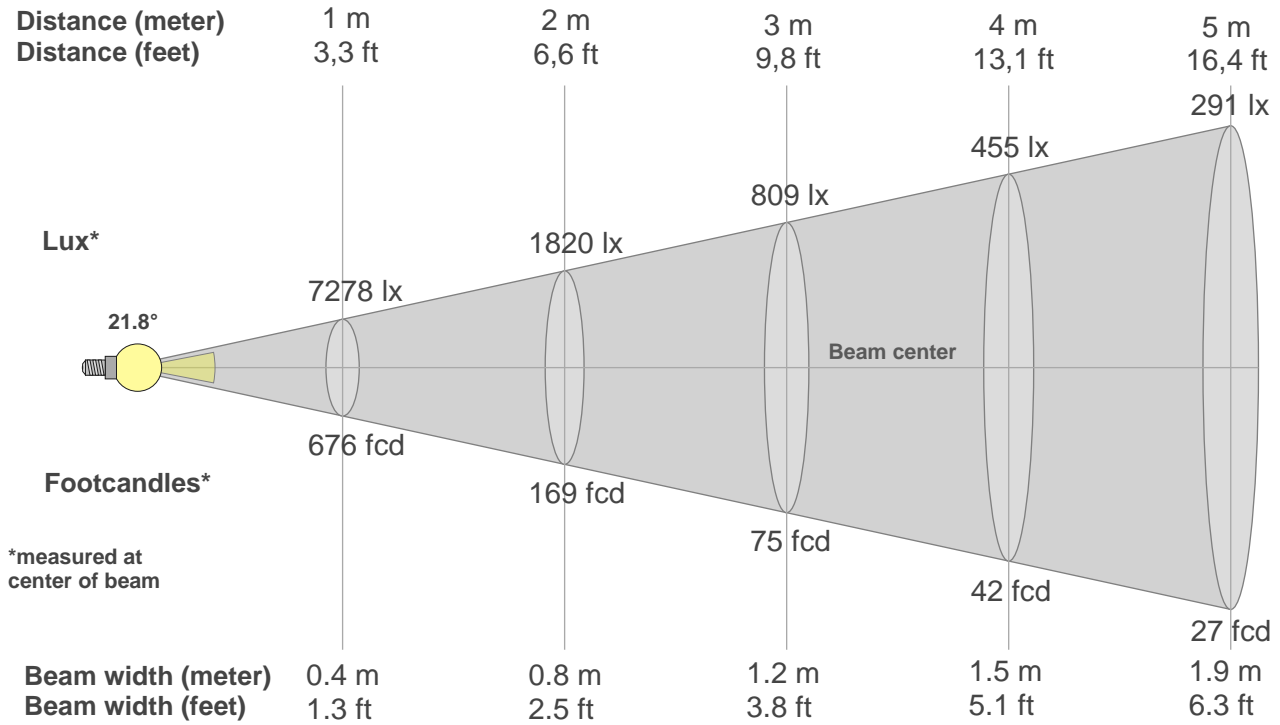
Color vector graphics



Color distortion



Beam details



Beam intensities from 1-20m

1m	2m	3m	4m	5m	6m	7m	8m	9m	10m	11m	12m	13m	14m	15m	16m	17m	18m	19m	20m
3.3ft	6.6ft	9.8ft	13.1ft	16.4ft	19.7ft	23ft	26.2ft	29.5ft	32.8ft	36.1ft	39.4ft	42.7ft	45.9ft	49.2ft	52.5ft	55.8ft	59.1ft	62.3ft	65.6ft
7278lx	1820lx	809lx	455lx	291lx	202lx	149lx	114lx	90lx	73lx	60lx	51lx	43lx	37lx	32lx	28lx	25lx	22lx	20lx	18lx
676.2fcd	169fcd	75.1fcd	42.3fcd	27fcd	18.8fcd	13.8fcd	10.6fcd	8.3fcd	6.8fcd	5.6fcd	4.7fcd	4fcd	3.4fcd	3fcd	2.6fcd	2.3fcd	2.1fcd	1.9fcd	1.7fcd

Intensities in 0° c-plane

0°	2°	4°	6°	8°	10°	12°	14°	16°	18°	20°	22°	24°	26°	28°	30°	32°	34°	36°	38°
7278	7198	6797	6114	5187	4127	3097	2276	1677	1258	998	858	792	748	640	438	210	47	7	5
100%	99%	93%	84%	71%	57%	43%	31%	23%	17%	14%	12%	11%	10%	9%	6%	3%	1%	0%	0%

Intensities in 90° c-plane

0°	2°	4°	6°	8°	10°	12°	14°	16°	18°	20°	22°	24°	26°	28°	30°	32°	34°	36°	38°
7278	7198	6797	6114	5187	4127	3097	2276	1677	1258	998	858	792	748	640	438	210	47	7	5
100%	99%	93%	84%	71%	57%	43%	31%	23%	17%	14%	12%	11%	10%	9%	6%	3%	1%	0%	0%

Intensities in 180° c-plane

0°	2°	4°	6°	8°	10°	12°	14°	16°	18°	20°	22°	24°	26°	28°	30°	32°	34°	36°	38°
7278	7105	6716	6066	5168	4117	3090	2269	1658	1243	988	849	782	735	632	448	217	42	12	4
100%	98%	92%	83%	71%	57%	42%	31%	23%	17%	14%	12%	11%	10%	9%	6%	3%	1%	0%	0%

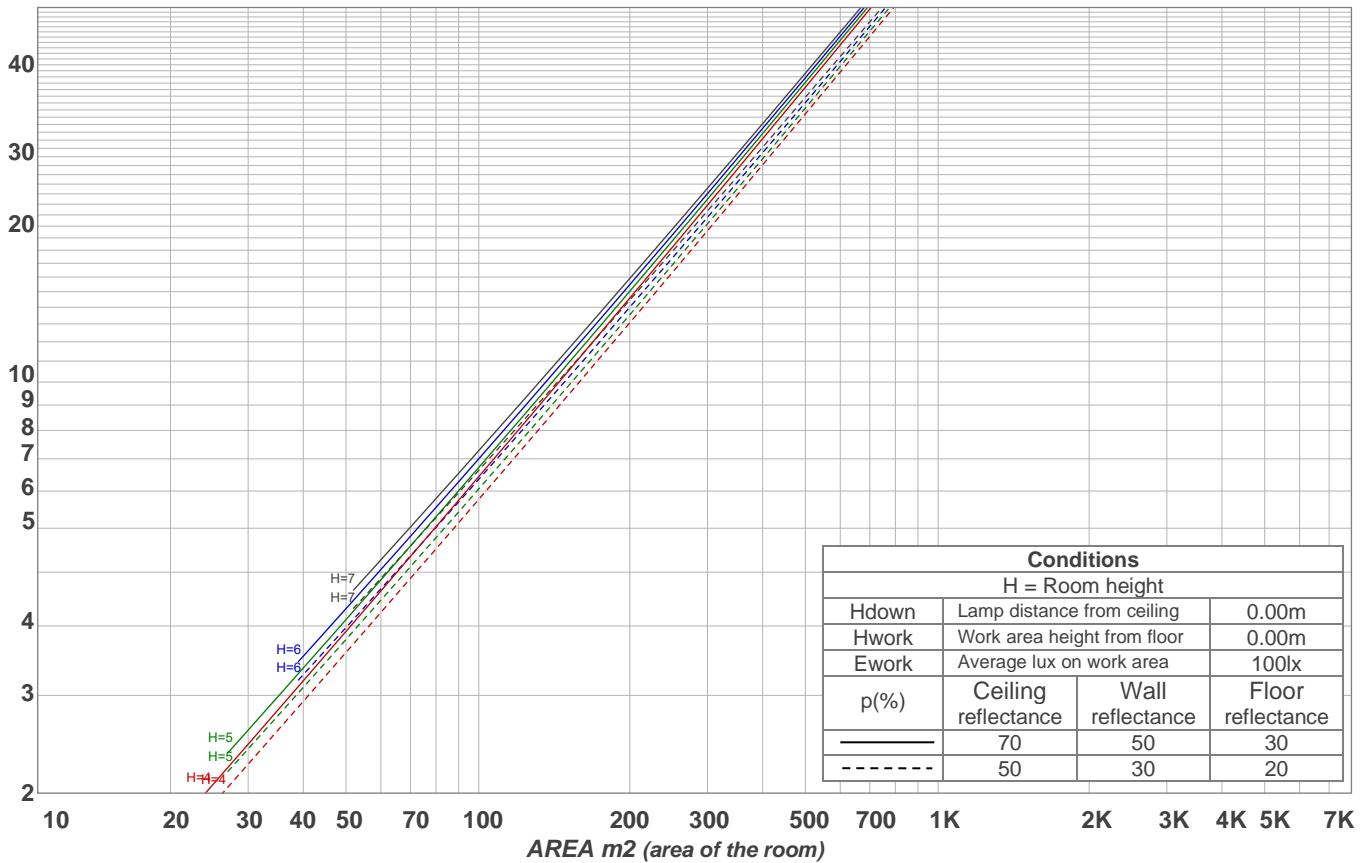
Intensities in 270° c-plane

0°	2°	4°	6°	8°	10°	12°	14°	16°	18°	20°	22°	24°	26°	28°	30°	32°	34°	36°	38°
7278	7105	6716	6066	5168	4117	3090	2269	1658	1243	988	849	782	735	632	448	217	42	12	4
100%	98%	92%	83%	71%	57%	42%	31%	23%	17%	14%	12%	11%	10%	9%	6%	3%	1%	0%	0%

Beam angle 50%	Field angle 10%	Cutoff angle 2,5%	Intensity ratio in 120° cone	Intensity ratio in 90° cone
21.8°	52.8°	64.7°	99.4%	99.2%

LAMPS (number of lamps)
50

Light planning Luminaire budgetary diagram



Luminaire budgetary diagram AREA m2 (area of the room) Coefficients of Utilization

Ceiling reflectance	80				70				50			30			10			0			
Wall reflectance	70	50	30	10	70	50	30	10	50	30	10	50	30	10	50	30	10	50	30	10	0
Floor reflectance	20	20	20	20	20	20	20	20	20	20	20	20	20	20	20	20	20	20	20	20	0
RCR	(RCR: Room Cavity Ratio)																				
	Room Values are expressed as percentage of Lumens delivered to the task surface																				
0	119	119	119	119	116	116	116	116	111	111	111	106	106	106	102	102	102	100	100	100	
1	115	113	111	109	112	111	109	107	107	105	104	103	102	101	99	99	98	96	96	96	
2	111	107	104	102	109	106	103	100	102	100	98	100	98	96	97	96	94	93	93	93	
3	107	103	99	96	106	101	98	95	99	96	94	96	94	92	94	93	91	90	90	90	
4	104	98	94	91	102	97	94	91	95	92	90	94	91	89	92	90	88	87	87	87	
5	101	95	91	87	99	94	90	87	92	89	86	91	88	86	89	87	85	84	84	84	
6	98	91	87	84	97	91	87	84	89	86	83	88	85	83	87	84	82	81	81	81	
7	95	88	84	81	94	88	84	81	87	83	80	86	82	80	85	82	80	79	79	79	
8	92	86	81	78	91	85	81	78	84	81	78	83	80	78	82	80	77	76	76	76	
9	90	83	79	76	89	83	79	76	82	78	76	81	78	75	80	77	75	74	74	74	
10	87	81	76	74	87	80	76	74	79	76	73	79	76	73	78	75	73	72	72	72	

Zonal Lumen Summary

0°-10°	10°-20°	20°-30°	30°-40°	40°-50°	50°-60°	60°-70°	70°-80°	80°-90°
540 lm	561 lm	343 lm	51.7 lm	2.00 lm	2.01 lm	2.14 lm	3.04 lm	3.94 lm
90°-100°	100°-110°	110°-120°	120°-130°	130°-140°	140°-150°	150°-160°	160°-170°	170°-180°
0.000 lm	0.000 lm	0.000 lm	0.000 lm	0.000 lm	0.000 lm	0.000 lm	0.000 lm	0.000 lm