

Light efficiency:



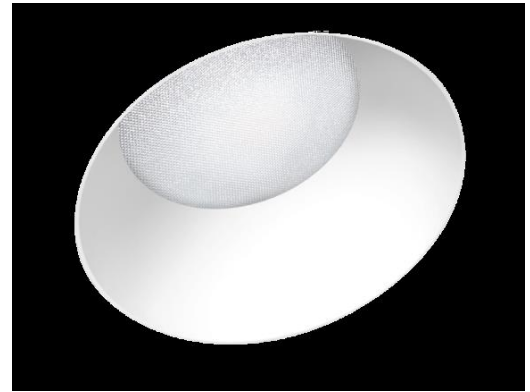
Output: 1322 lm

Light quality:

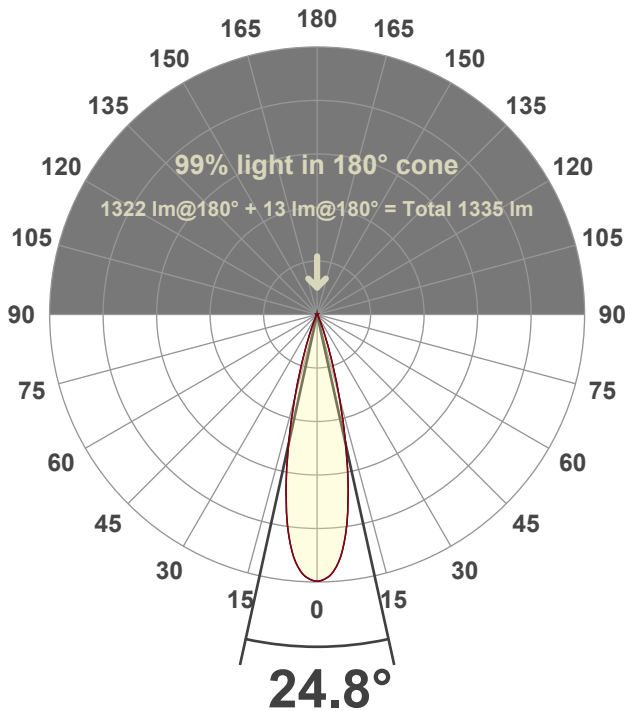


Peak: 6978 cd

Power: 15.4 W



Beam angle



Test number:

CR3D-RA-DR-C14-30K-24

Luminaire Model:

Core 3" Round Deep Regress C14-30K-24°

Date and time:

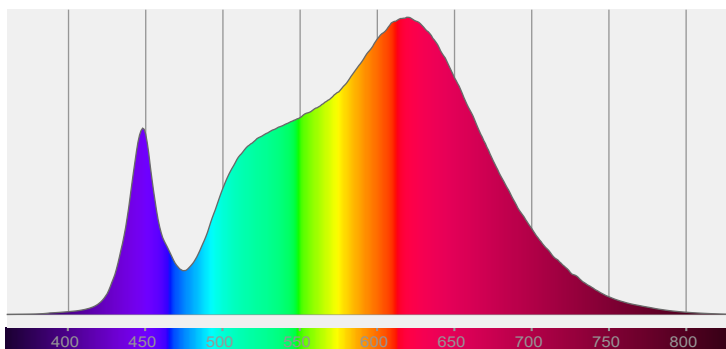
3/12/2026 11:41:20 AM

LUM: 1322

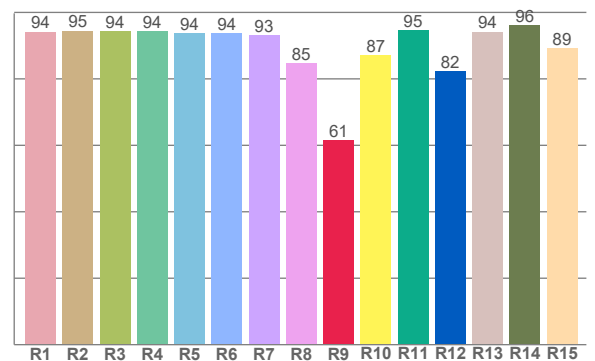


*Variation due to source size, bezel geometry, or secondary optics

Spectra



CRI: 92.8 (R1-R8)



Color parameters

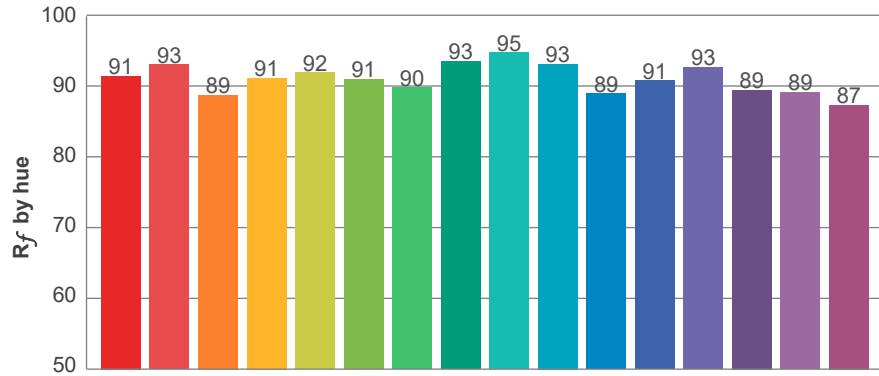
	Color rendering index	Red component	Color fidelity	Color gamut	Color quality scale	Color coordinate cie 1931	Color coordinate cie 1931	Color coordinate	Color coordinate	Color deviation from black body
	CRI	CRI R9	TM30 R _f	TM30 R _g	CQS	x	y	u	v	Δuv
	92.8	61.5	91.2	102.4	91.0	0.427	0.401	0.245	0.346	0.0005

R_f 91.2
Fidelity index R_f

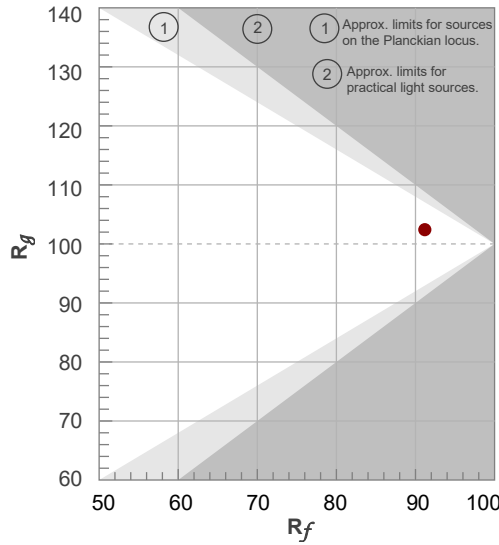
R_g 102.4
Gammut index R_g

TM30: 91.2

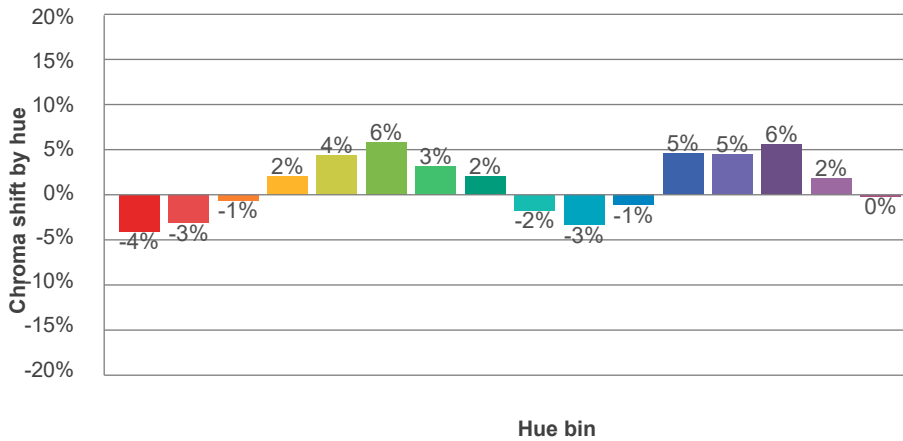
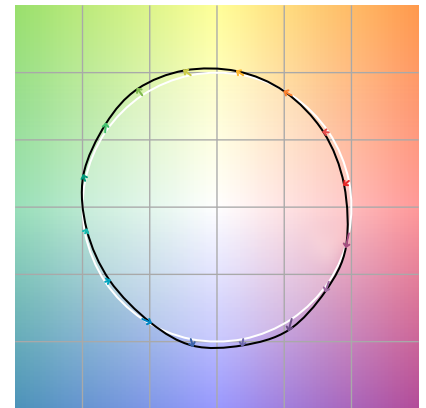
TM-30Color



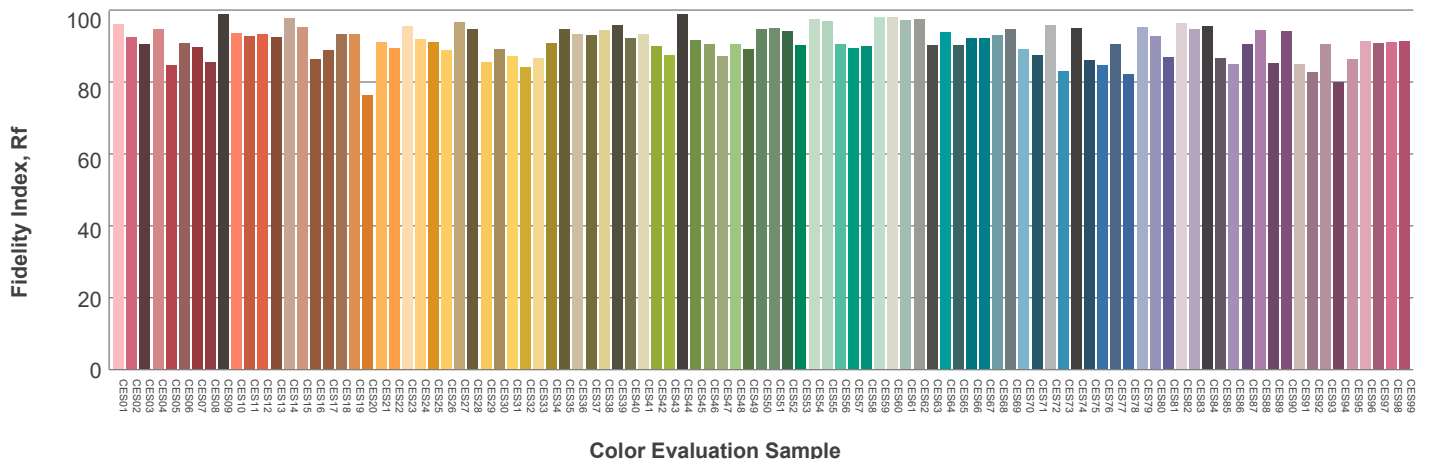
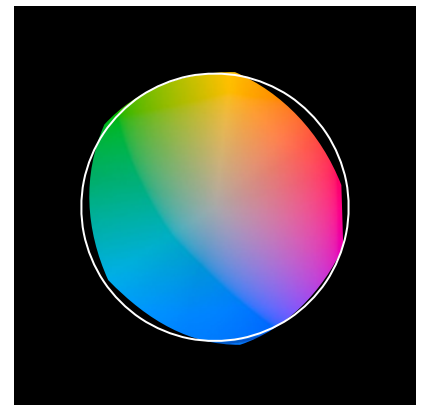
Hue Bin	R_f	Graphic shifts (%)	
		Chroma	Hue
1	91	-4%	-2%
2	93	-3%	2%
3	89	-1%	6%
4	91	2%	5%
5	92	4%	4%
6	91	6%	0%
7	90	3%	-6%
8	93	2%	-4%
9	95	-2%	-2%
10	93	-3%	1%
11	89	-1%	7%
12	91	5%	2%
13	93	5%	-2%
14	89	6%	-6%
15	89	2%	-7%
16	87	0%	-10%



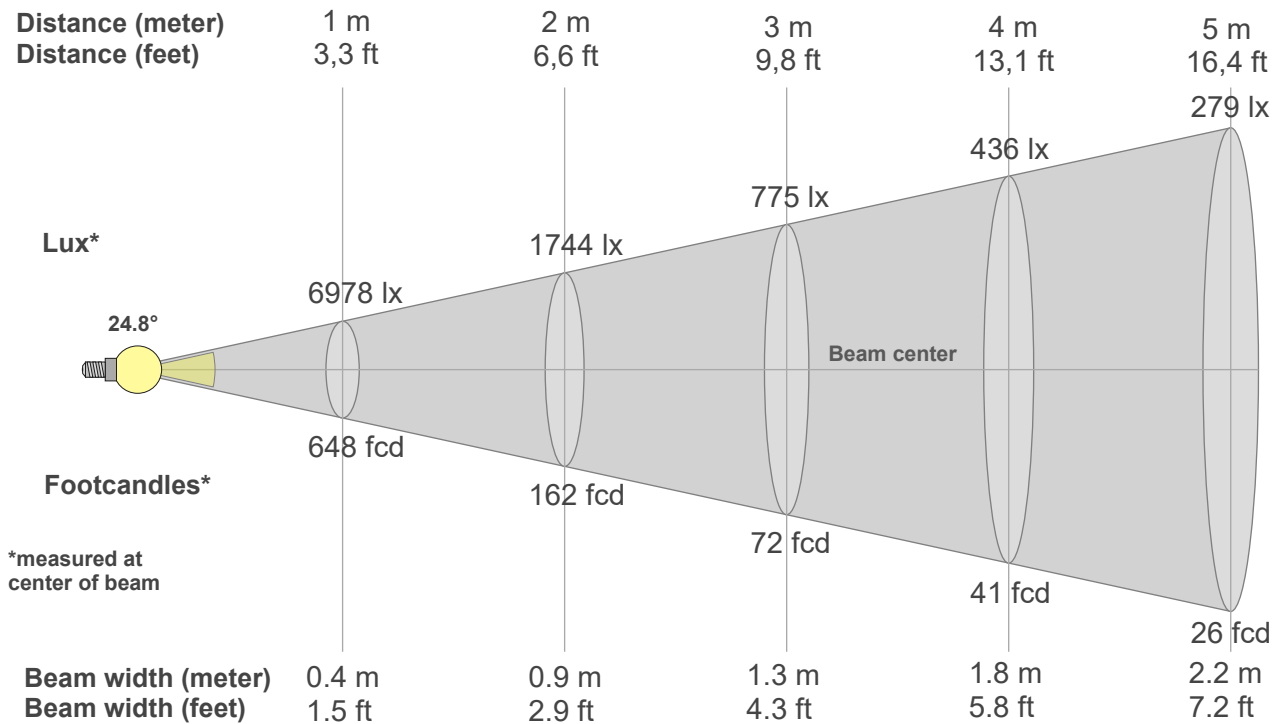
Color vector graphics



Color distortion



Beam details



Beam intensities from 1-20m

1m	2m	3m	4m	5m	6m	7m	8m	9m	10m	11m	12m	13m	14m	15m	16m	17m	18m	19m	20m
3.3ft	6.6ft	9.8ft	13.1ft	16.4ft	19.7ft	23ft	26.2ft	29.5ft	32.8ft	36.1ft	39.4ft	42.7ft	45.9ft	49.2ft	52.5ft	55.8ft	59.1ft	62.3ft	65.6ft
6978lx	1744lx	775lx	436lx	279lx	194lx	142lx	109lx	86lx	70lx	58lx	48lx	41lx	36lx	31lx	27lx	24lx	22lx	19lx	17lx
648.2fcd	162.1fcd	72fcd	40.5fcd	25.9fcd	18fcd	13.2fcd	10.1fcd	8fcd	6.5fcd	5.4fcd	4.5fcd	3.8fcd	3.3fcd	2.9fcd	2.5fcd	2.2fcd	2fcd	1.8fcd	1.6fcd

Intensities in 0° c-plane

0°	1°	2°	3°	4°	5°	6°	7°	8°	9°	10°	11°	12°	13°	14°	15°	16°	17°	18°	19°
6978	6978	6900	6822	6674	6476	6252	5912	5572	5136	4675	4198	3695	3193	2730	2266	1863	1496	1159	916
100%	100%	99%	98%	96%	93%	90%	85%	80%	74%	67%	60%	53%	46%	39%	32%	27%	21%	17%	13%

Intensities in 90° c-plane

0°	1°	2°	3°	4°	5°	6°	7°	8°	9°	10°	11°	12°	13°	14°	15°	16°	17°	18°	19°
6978	6978	6900	6822	6674	6476	6252	5912	5572	5136	4675	4198	3695	3193	2730	2266	1863	1496	1159	916
100%	100%	99%	98%	96%	93%	90%	85%	80%	74%	67%	60%	53%	46%	39%	32%	27%	21%	17%	13%

Intensities in 180° c-plane

0°	1°	2°	3°	4°	5°	6°	7°	8°	9°	10°	11°	12°	13°	14°	15°	16°	17°	18°	19°
6978	6978	6900	6822	6674	6476	6252	5912	5572	5136	4675	4198	3695	3193	2730	2266	1863	1496	1159	916
100%	100%	99%	98%	96%	93%	90%	85%	80%	74%	67%	60%	53%	46%	39%	32%	27%	21%	17%	13%

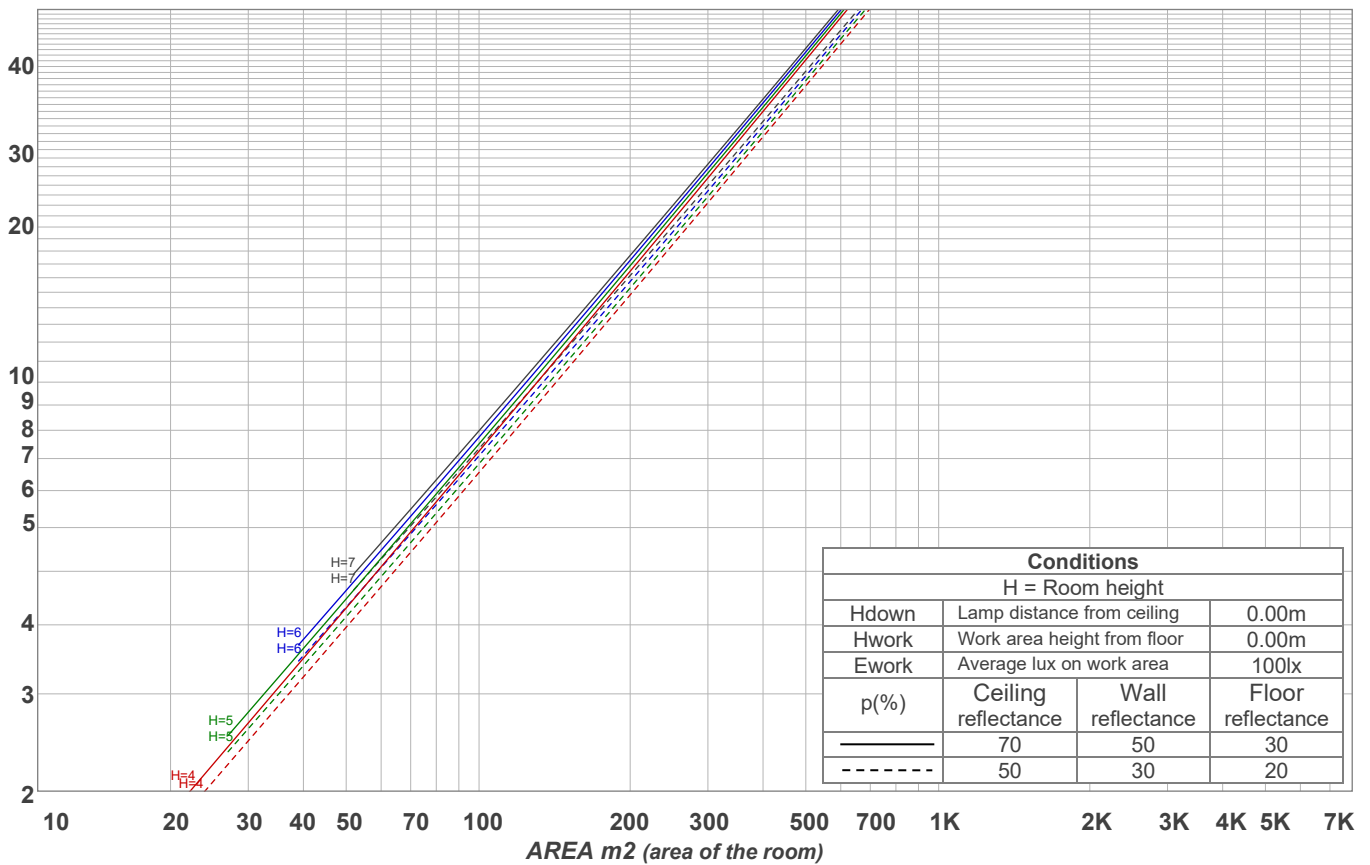
Intensities in 270° c-plane

0°	1°	2°	3°	4°	5°	6°	7°	8°	9°	10°	11°	12°	13°	14°	15°	16°	17°	18°	19°
6978	6978	6900	6822	6674	6476	6252	5912	5572	5136	4675	4198	3695	3193	2730	2266	1863	1496	1159	916
100%	100%	99%	98%	96%	93%	90%	85%	80%	74%	67%	60%	53%	46%	39%	32%	27%	21%	17%	13%

Beam angle 50%	Field angle 10%	Cutoff angle 2,5%	Intensity ratio in 120° cone	Intensity ratio in 90° cone
24.8°	39.8°	49.5°	99.4%	99.0%

LAMPS (number of lamps)
50

Light planning Luminaire budgetary diagram



Luminaire budgetary diagram AREA m2 (area of the room) Coefficients of Utilization

Ceiling reflectance	80				70				50			30			10			0			
Wall reflectance	70	50	30	10	70	50	30	10	50	30	10	50	30	10	50	30	10	50	30	10	0
Floor reflectance	20	20	20	20	20	20	20	20	20	20	20	20	20	20	20	20	20	20	20	20	0
RCR	(RCR: Room Cavity Ratio)																				
	Room Values are expressed as percentage of Lumens delivered to the task surface																				
0	119	119	119	119	116	116	116	116	111	111	111	106	106	106	102	102	102	100	100	100	
1	115	113	111	110	113	111	109	108	107	106	105	103	102	102	100	99	99	97	97	97	
2	112	108	105	103	110	107	104	102	104	102	100	101	99	98	98	97	96	94	94	94	
3	109	104	101	98	107	103	100	97	100	98	96	98	96	94	96	94	93	92	92	92	
4	106	101	97	94	104	100	96	94	98	95	93	96	93	92	94	92	91	89	89	89	
5	103	97	94	91	102	97	93	91	95	92	90	94	91	89	92	90	88	87	87	87	
6	100	95	91	88	99	94	90	88	93	90	87	91	89	87	90	88	86	85	85	85	
7	98	92	88	86	97	92	88	85	90	87	85	89	87	85	89	86	84	83	83	83	
8	96	90	86	83	95	89	86	83	88	85	83	88	85	83	87	84	82	81	81	81	
9	94	88	84	81	93	87	84	81	86	83	81	86	83	81	85	82	81	80	80	80	
10	92	86	82	80	91	85	82	79	85	81	79	84	81	79	83	81	79	78	78	78	

Zonal Lumen Summary

0°-10°	10°-20°	20°-30°	30°-40°	40°-50°	50°-60°	60°-70°	70°-80°	80°-90°
562 lm	619 lm	100.0 lm	23.3 lm	7.57 lm	2.72 lm	2.32 lm	2.63 lm	3.56 lm
90°-100°	100°-110°	110°-120°	120°-130°	130°-140°	140°-150°	150°-160°	160°-170°	170°-180°
0.000 lm	0.000 lm	0.000 lm	0.000 lm	0.000 lm	0.000 lm	0.000 lm	0.000 lm	0.000 lm