

Light efficiency:



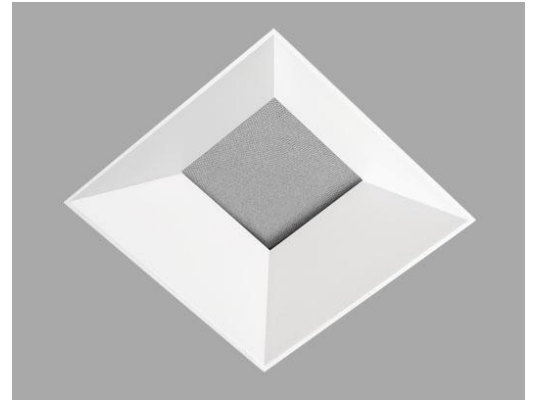
Output: 1302 lm

Light quality:

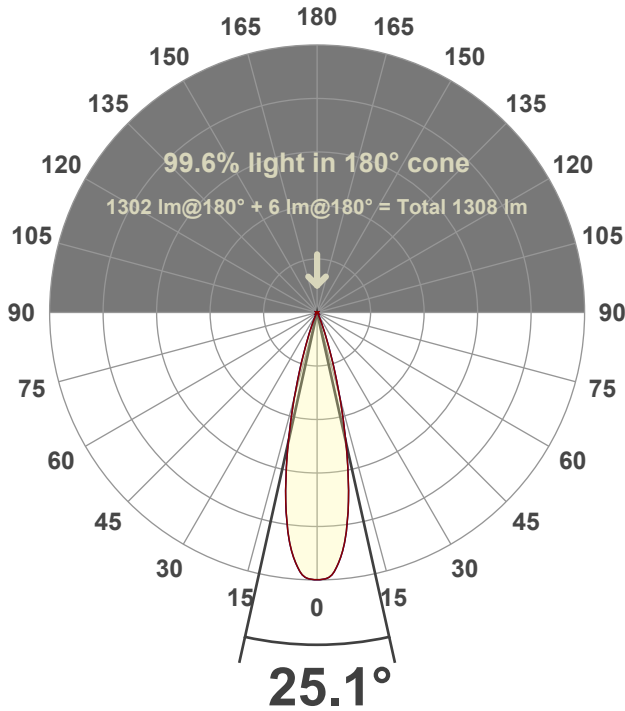


Peak: 6897 cd

Power: 15.4 W



Beam angle



Test number:

CR3D-SA-DR-C14-30K-24

Luminaire Model:

Core 3" Square Deep Regress C14-30K-24°

Date and time:

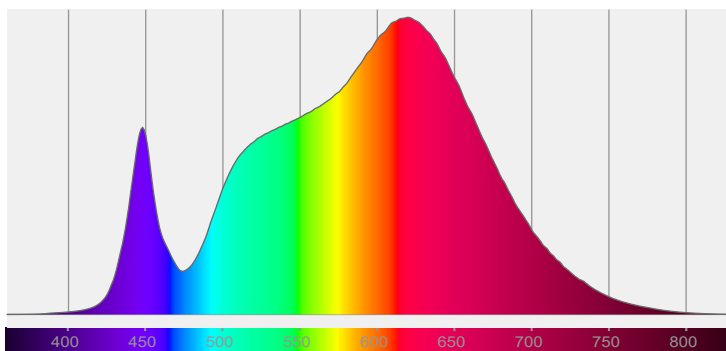
3/12/2026 11:22:11 AM

LUM: 1302

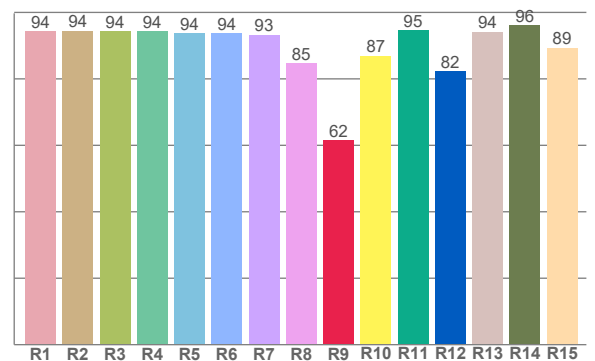


*Variation due to source size, bezel geometry, or secondary optics

Spectra



CRI: 92.8 (R1-R8)



Color parameters

	Color rendering index	Red component	Color fidelity	Color gamut	Color quality scale	Color coordinate cie 1931	Color coordinate cie 1931	Color coordinate	Color coordinate	Color deviation from black body
	CRI	CRI R9	TM30 R _f	TM30 R _g	CQS	x	y	u	v	Δuv
	92.8	61.6	91.2	102.4	91.0	0.427	0.402	0.245	0.346	0.0006

R_f 91.2

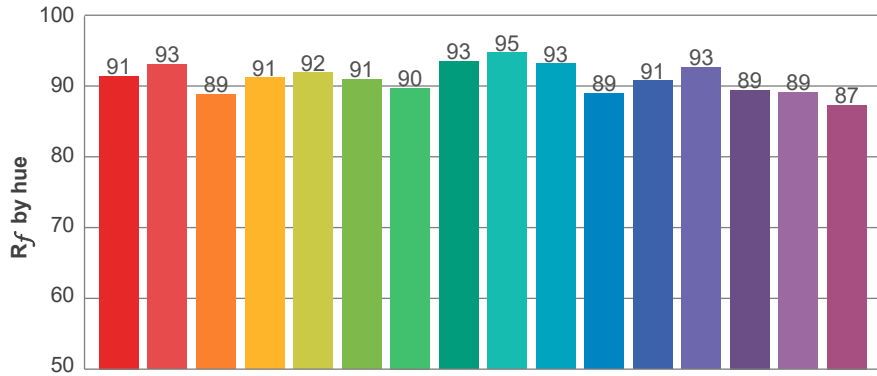
Fidelity index R_f

R_g 102.4

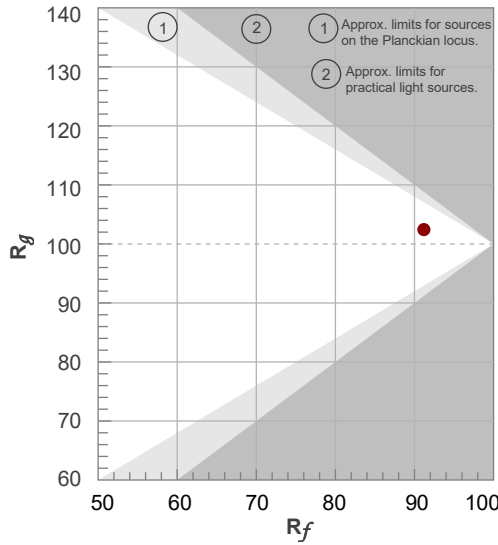
Gammut index R_g

TM30: 91.2

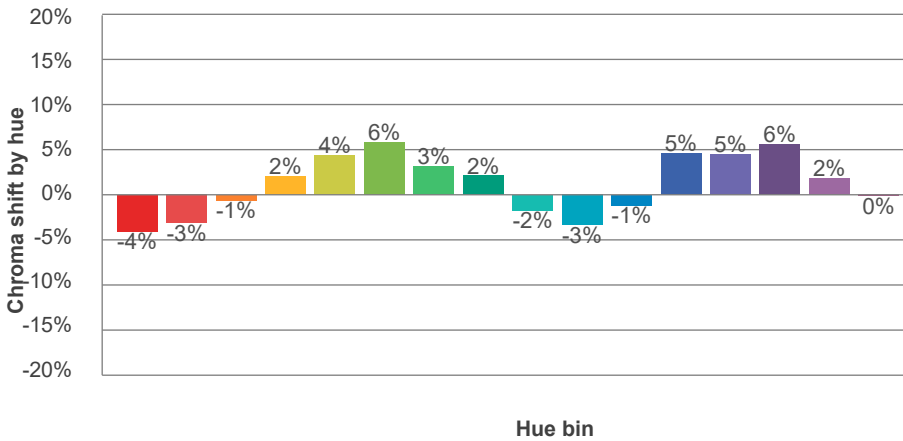
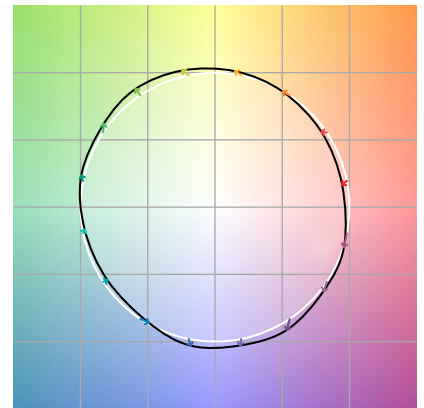
TM-30Color



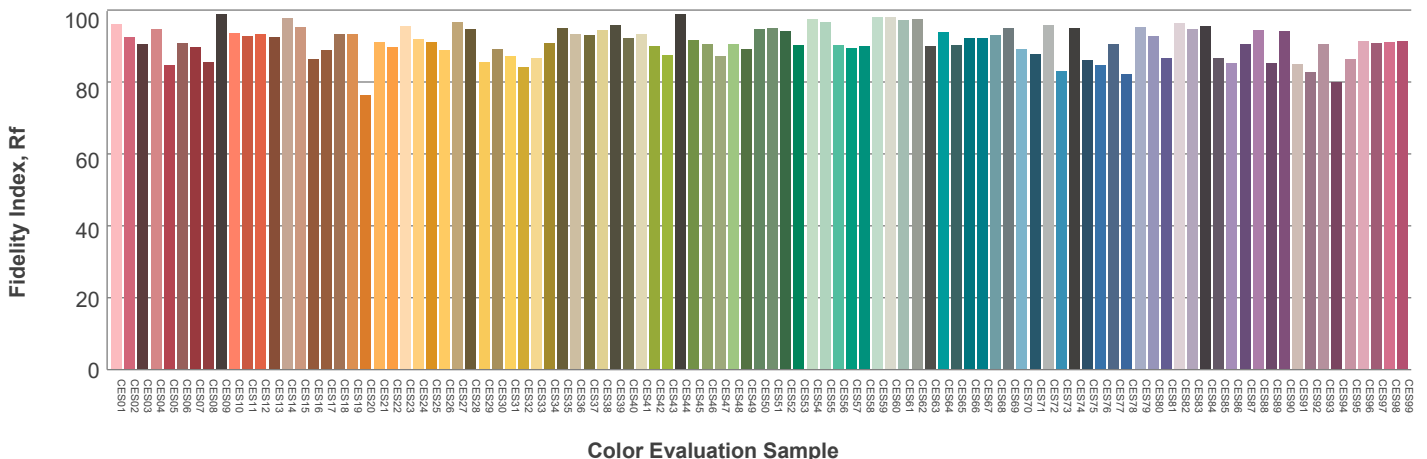
Hue Bin	R _f	Graphic shifts (%)	
		Chroma	Hue
1	91	-4%	-2%
2	93	-3%	2%
3	89	-1%	6%
4	91	2%	5%
5	92	4%	4%
6	91	6%	0%
7	90	3%	-6%
8	93	2%	-4%
9	95	-2%	-2%
10	93	-3%	1%
11	89	-1%	7%
12	91	5%	2%
13	93	5%	-2%
14	89	6%	-6%
15	89	2%	-7%
16	87	0%	-10%



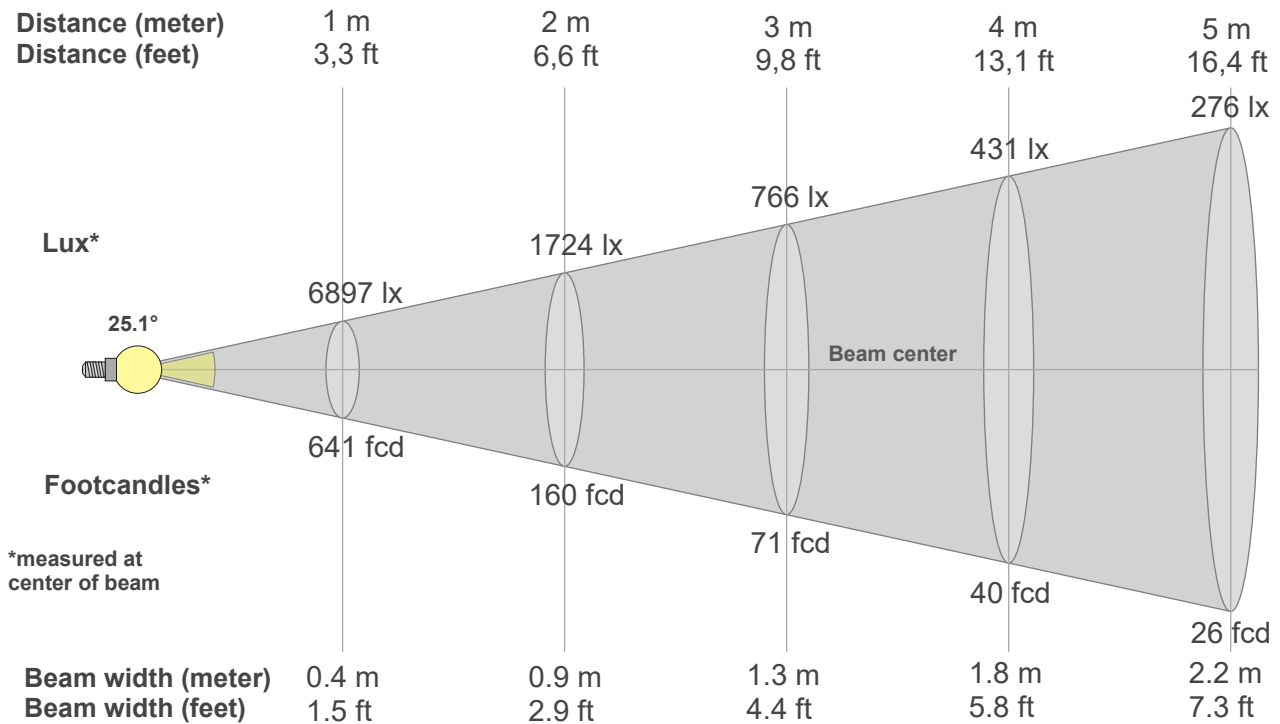
Color vector graphics



Color distortion



Beam details



Beam intensities from 1-20m

1m	2m	3m	4m	5m	6m	7m	8m	9m	10m	11m	12m	13m	14m	15m	16m	17m	18m	19m	20m
3.3ft	6.6ft	9.8ft	13.1ft	16.4ft	19.7ft	23ft	26.2ft	29.5ft	32.8ft	36.1ft	39.4ft	42.7ft	45.9ft	49.2ft	52.5ft	55.8ft	59.1ft	62.3ft	65.6ft
6897lx	1724lx	766lx	431lx	276lx	192lx	141lx	108lx	85lx	69lx	57lx	48lx	41lx	35lx	31lx	27lx	24lx	21lx	19lx	17lx
640.8fcd	160.2fcd	71.2fcd	40fcd	25.6fcd	17.8fcd	13.1fcd	10fcd	7.9fcd	6.4fcd	5.3fcd	4.4fcd	3.8fcd	3.3fcd	2.8fcd	2.5fcd	2.2fcd	2fcd	1.8fcd	1.6fcd

Intensities in 0° c-plane

0°	1°	2°	3°	4°	5°	6°	7°	8°	9°	10°	11°	12°	13°	14°	15°	16°	17°	18°	19°
6897	6897	6897	6791	6659	6474	6209	5945	5543	5139	4686	4197	3709	3219	2729	2291	1871	1490	1185	879
100%	100%	100%	98%	97%	94%	90%	86%	80%	75%	68%	61%	54%	47%	40%	33%	27%	22%	17%	13%

Intensities in 90° c-plane

0°	1°	2°	3°	4°	5°	6°	7°	8°	9°	10°	11°	12°	13°	14°	15°	16°	17°	18°	19°
6897	6897	6897	6791	6659	6474	6209	5945	5543	5139	4686	4197	3709	3219	2729	2291	1871	1490	1185	879
100%	100%	100%	98%	97%	94%	90%	86%	80%	75%	68%	61%	54%	47%	40%	33%	27%	22%	17%	13%

Intensities in 180° c-plane

0°	1°	2°	3°	4°	5°	6°	7°	8°	9°	10°	11°	12°	13°	14°	15°	16°	17°	18°	19°
6897	6897	6897	6791	6659	6474	6209	5945	5543	5139	4686	4197	3709	3219	2729	2291	1871	1490	1185	879
100%	100%	100%	98%	97%	94%	90%	86%	80%	75%	68%	61%	54%	47%	40%	33%	27%	22%	17%	13%

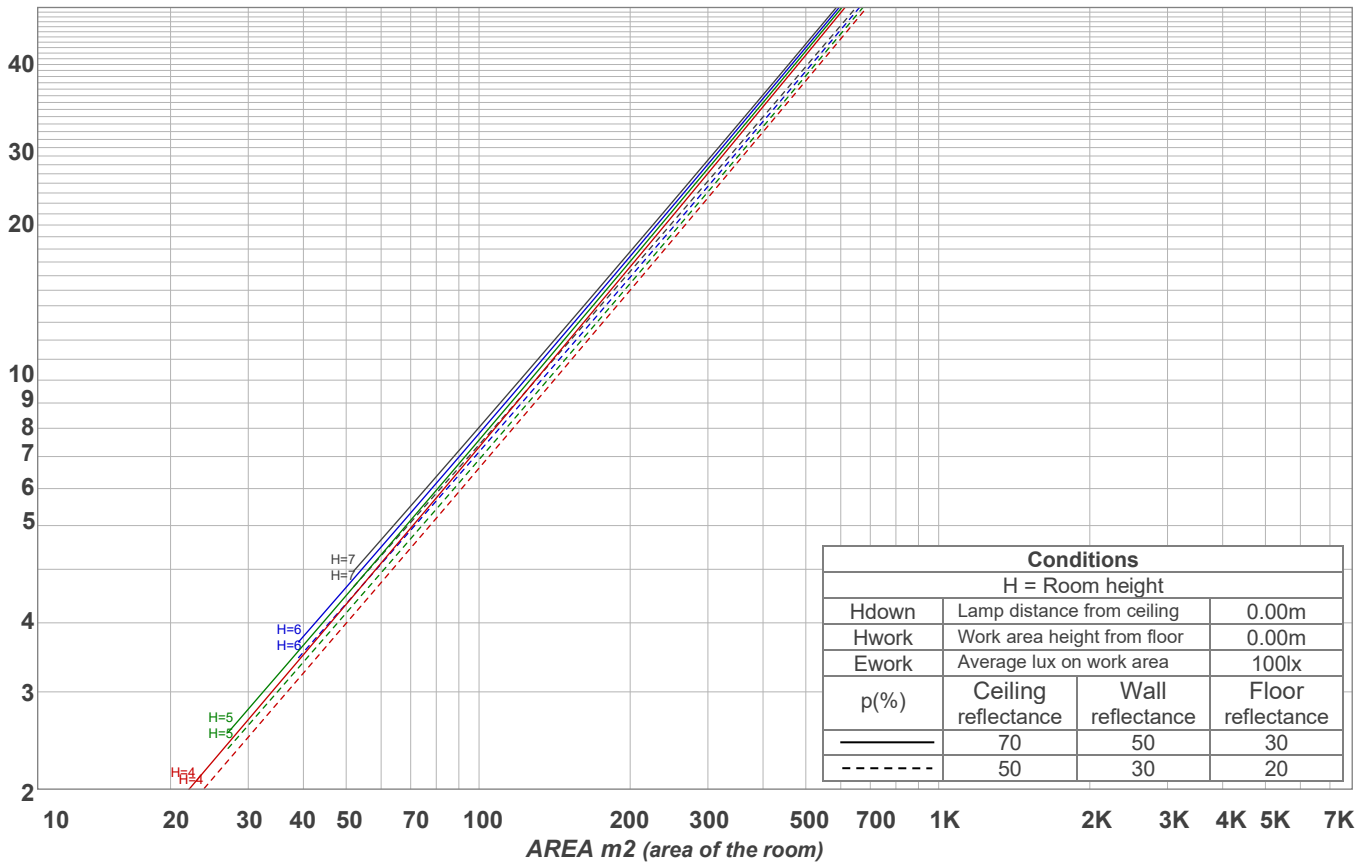
Intensities in 270° c-plane

0°	1°	2°	3°	4°	5°	6°	7°	8°	9°	10°	11°	12°	13°	14°	15°	16°	17°	18°	19°
6897	6897	6897	6791	6659	6474	6209	5945	5543	5139	4686	4197	3709	3219	2729	2291	1871	1490	1185	879
100%	100%	100%	98%	97%	94%	90%	86%	80%	75%	68%	61%	54%	47%	40%	33%	27%	22%	17%	13%

Beam angle 50%	Field angle 10%	Cutoff angle 2,5%	Intensity ratio in 120° cone	Intensity ratio in 90° cone
25.1°	40°	49.4°	99.8%	99.7%

LAMPS (number of lamps)
50

Light planning Luminaire budgetary diagram



Luminaire budgetary diagram AREA m2 (area of the room) Coefficients of Utilization

Ceiling reflectance	80				70				50			30			10			0			
Wall reflectance	70	50	30	10	70	50	30	10	50	30	10	50	30	10	50	30	10	50	30	10	0
Floor reflectance	20	20	20	20	20	20	20	20	20	20	20	20	20	20	20	20	20	20	20	20	0
RCR	(RCR: Room Cavity Ratio)																				
	Room Values are expressed as percentage of Lumens delivered to the task surface																				
0	119	119	119	119	116	116	116	116	111	111	111	106	106	106	102	102	102	100	100	100	
1	115	113	112	110	113	111	110	108	107	106	105	104	103	102	100	100	99	97	97	97	
2	112	109	106	104	110	107	105	102	104	102	100	101	100	98	98	97	96	95	95	95	
3	109	105	101	99	107	103	100	98	101	99	97	99	97	95	97	95	94	92	92	92	
4	106	101	98	95	105	100	97	94	98	95	93	96	94	92	95	93	91	90	90	90	
5	103	98	94	92	102	97	94	91	96	93	91	94	92	90	93	91	89	88	88	88	
6	101	95	92	89	100	95	91	89	93	90	88	92	90	88	91	89	87	86	86	86	
7	99	93	89	87	98	92	89	86	91	88	86	90	88	86	89	87	85	84	84	84	
8	96	91	87	84	95	90	87	84	89	86	84	88	86	84	88	85	83	82	82	82	
9	94	88	85	82	93	88	85	82	87	84	82	87	84	82	86	83	82	81	81	81	
10	92	86	83	81	92	86	83	80	85	82	80	85	82	80	84	82	80	79	79	79	

Zonal Lumen Summary

0°-10°	10°-20°	20°-30°	30°-40°	40°-50°	50°-60°	60°-70°	70°-80°	80°-90°
561 lm	623 lm	93.6 lm	18.4 lm	2.68 lm	0.268 lm	0.311 lm	1.21 lm	1.70 lm
90°-100°	100°-110°	110°-120°	120°-130°	130°-140°	140°-150°	150°-160°	160°-170°	170°-180°
0.000 lm	0.000 lm	0.000 lm	0.000 lm	0.000 lm	0.000 lm	0.000 lm	0.000 lm	0.000 lm