

Light efficiency:



Output: 1522 lm

Light quality:

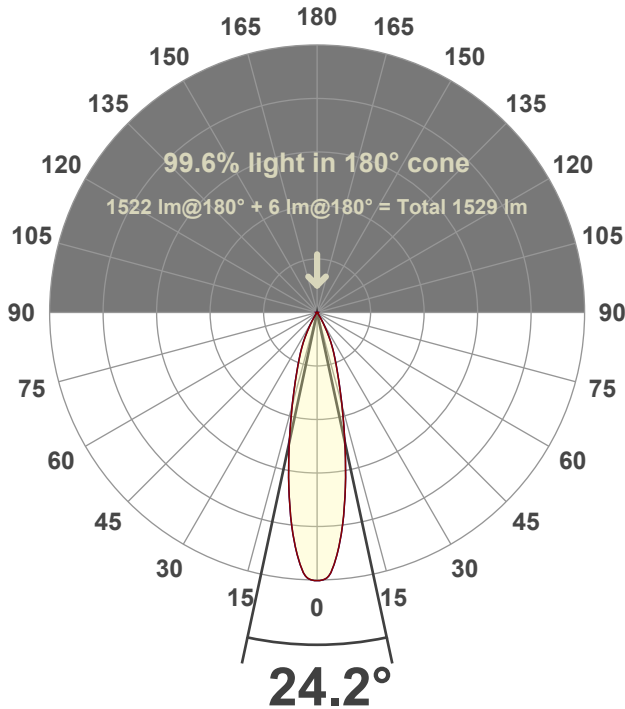


Peak: 6304 cd

Power: 22.0 W



Beam angle



Test number:

CR4D-RA-DR-Z-AD20-3019-24

Luminaire Model:

Core 4" Round Deep Regress AD20-3019-24°

Date and time:

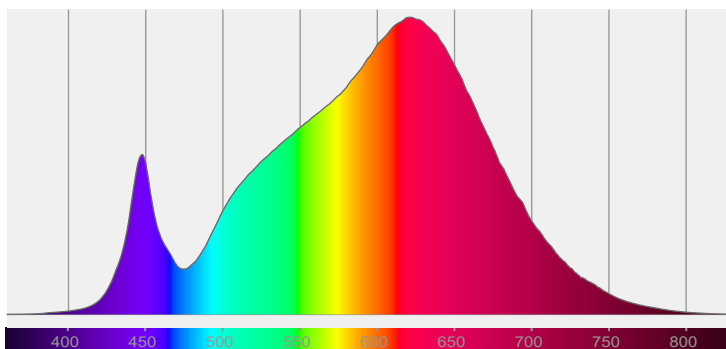
7/31/2025 11:20:04 AM

LUM: 1522

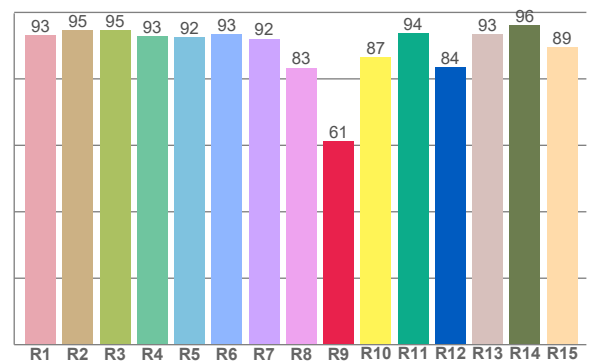


\*Variation due to source size, bezel geometry, or secondary optics

Spectra



CRI: 92.0 (R1-R8)



Color parameters

	Color rendering index	Red component	Color fidelity	Color gamut	Color quality scale	Color coordinate cie 1931	Color coordinate cie 1931	Color coordinate	Color coordinate	Color deviation from black body
	CRI	CRI R9	TM30 R <sub>f</sub>	TM30 R <sub>g</sub>	CQS	x	y	u	v	Δuv
	92.0	61.3	89.7	102.8	88.9	0.439	0.400	0.253	0.347	-0.0019

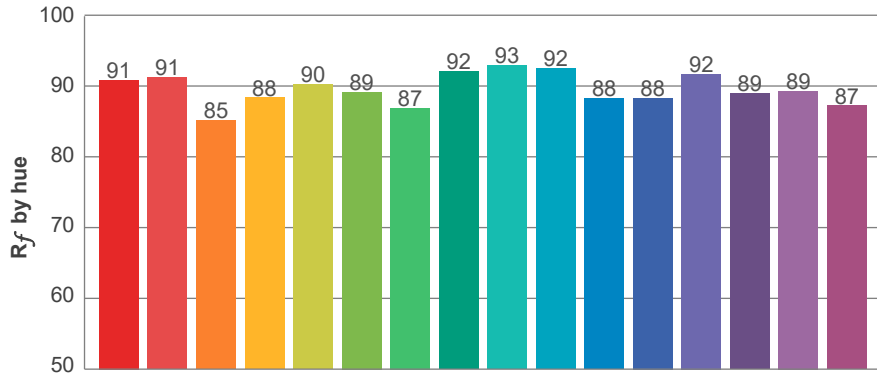
**$R_f$  89.7**  
Fidelity index  $R_f$

---

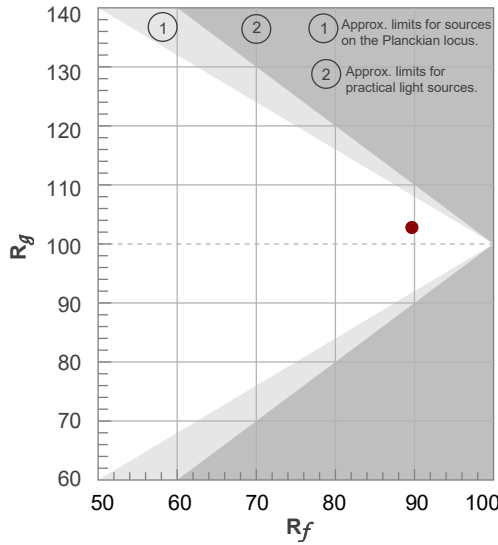
**$R_g$  102.8**  
Gammut index  $R_g$

TM30: 89.7

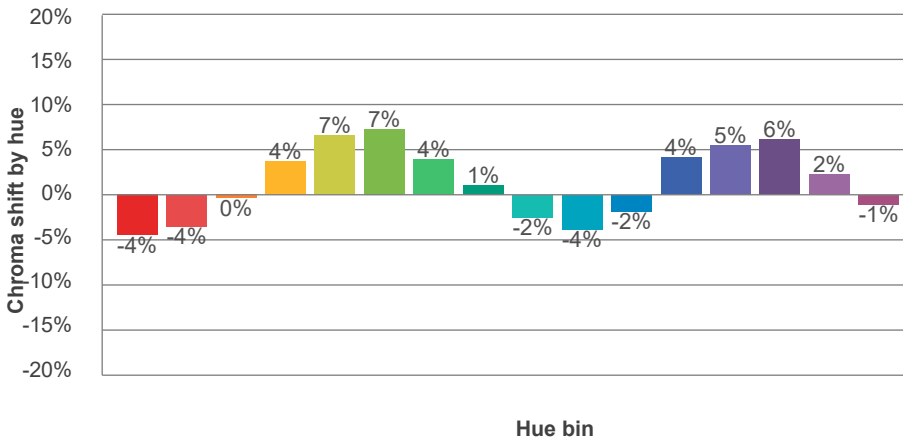
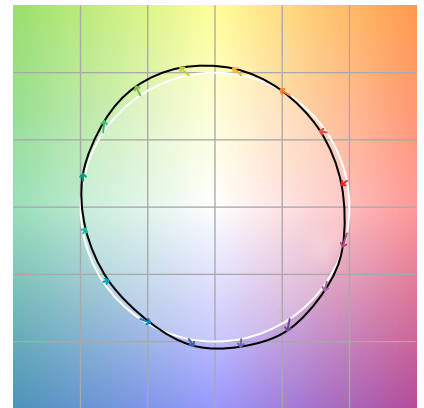
TM-30Color



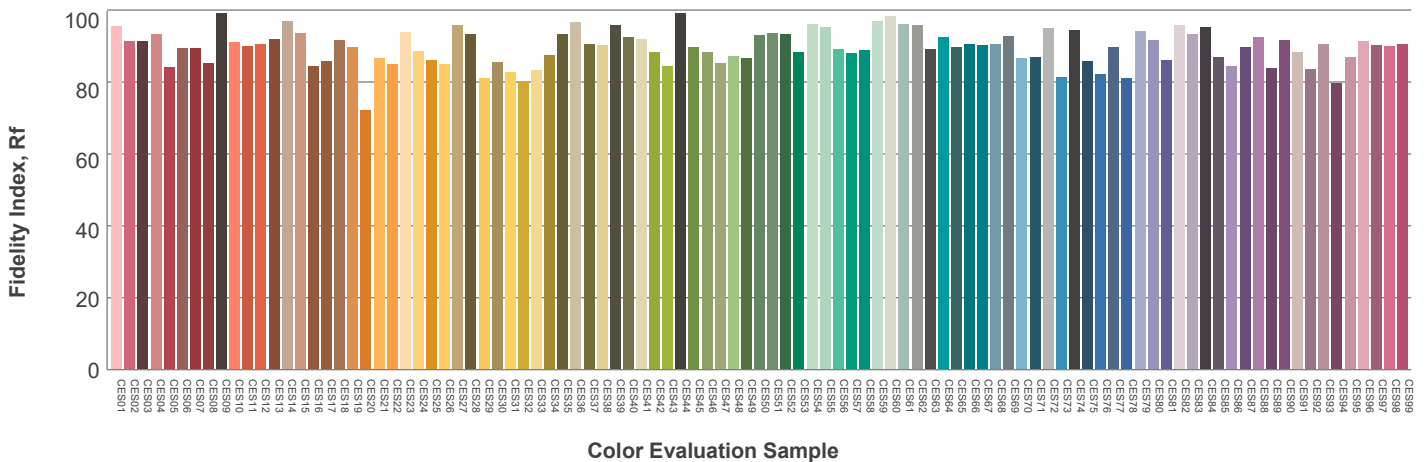
Hue Bin	$R_f$	Graphic shifts (%)	
		Chroma	Hue
1	91	-4%	-2%
2	91	-4%	4%
3	85	0%	8%
4	88	4%	7%
5	90	7%	5%
6	89	7%	-1%
7	87	4%	-7%
8	92	1%	-5%
9	93	-2%	-3%
10	92	-4%	2%
11	88	-2%	8%
12	88	4%	4%
13	92	5%	-2%
14	89	6%	-6%
15	89	2%	-6%
16	87	-1%	-10%



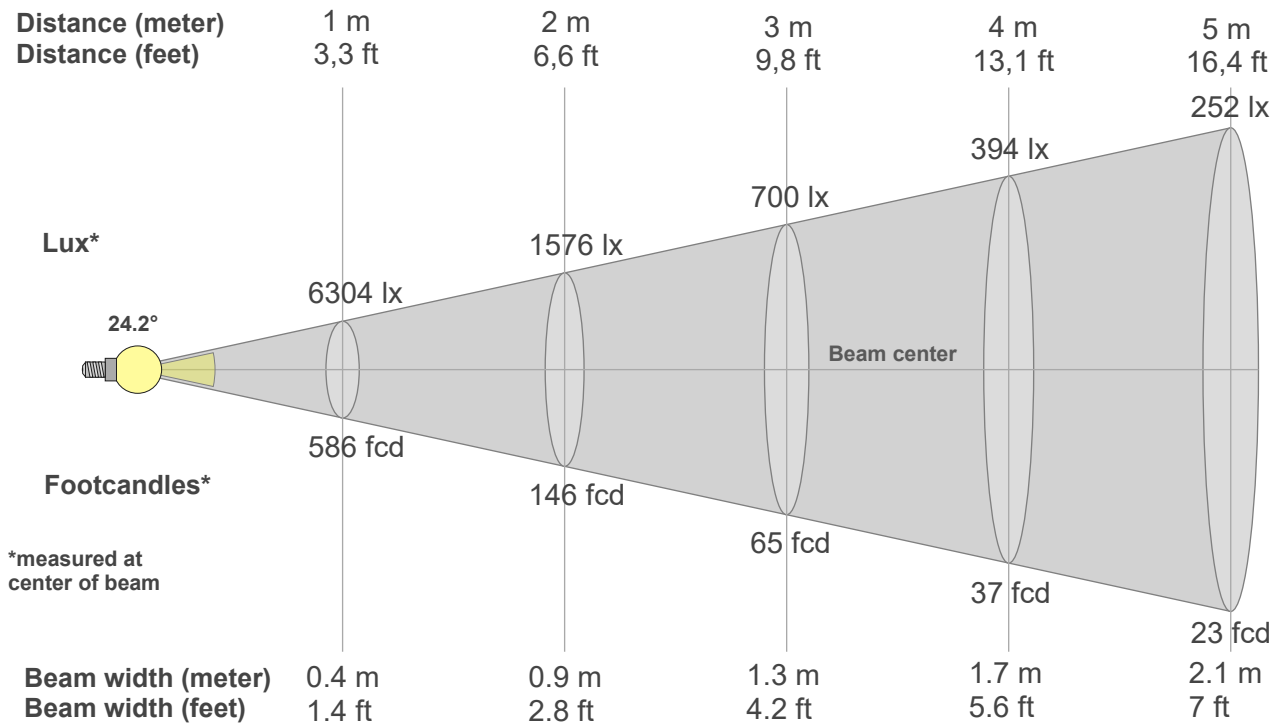
Color vector graphics



Color distortion



### Beam details



#### Beam intensities from 1-20m

1m	2m	3m	4m	5m	6m	7m	8m	9m	10m	11m	12m	13m	14m	15m	16m	17m	18m	19m	20m
3.3ft	6.6ft	9.8ft	13.1ft	16.4ft	19.7ft	23ft	26.2ft	29.5ft	32.8ft	36.1ft	39.4ft	42.7ft	45.9ft	49.2ft	52.5ft	55.8ft	59.1ft	62.3ft	65.6ft
6304lx	1576lx	700lx	394lx	252lx	175lx	129lx	98lx	78lx	63lx	52lx	44lx	37lx	32lx	28lx	25lx	22lx	19lx	17lx	16lx
585.6fcd	146.4fcd	65.1fcd	36.6fcd	23.4fcd	16.3fcd	12fcd	9.2fcd	7.2fcd	5.9fcd	4.8fcd	4.1fcd	3.5fcd	3fcd	2.6fcd	2.3fcd	2fcd	1.8fcd	1.6fcd	1.5fcd

#### Intensities in 0° c-plane

0°	2°	4°	6°	8°	10°	12°	14°	16°	18°	20°	22°	24°	26°	28°	30°	32°	34°	36°	38°
6304	6304	5918	5337	4638	3897	3182	2546	2041	1641	1328	1076	857	641	429	273	149	68	36	26
100%	100%	94%	85%	74%	62%	50%	40%	32%	26%	21%	17%	14%	10%	7%	4%	2%	1%	1%	0%

#### Intensities in 90° c-plane

0°	2°	4°	6°	8°	10°	12°	14°	16°	18°	20°	22°	24°	26°	28°	30°	32°	34°	36°	38°
6304	6304	5918	5337	4638	3897	3182	2546	2041	1641	1328	1076	857	641	429	273	149	68	36	26
100%	100%	94%	85%	74%	62%	50%	40%	32%	26%	21%	17%	14%	10%	7%	4%	2%	1%	1%	0%

#### Intensities in 180° c-plane

0°	2°	4°	6°	8°	10°	12°	14°	16°	18°	20°	22°	24°	26°	28°	30°	32°	34°	36°	38°
6304	6304	5918	5337	4638	3897	3182	2546	2041	1641	1328	1076	857	641	429	273	149	68	36	26
100%	100%	94%	85%	74%	62%	50%	40%	32%	26%	21%	17%	14%	10%	7%	4%	2%	1%	1%	0%

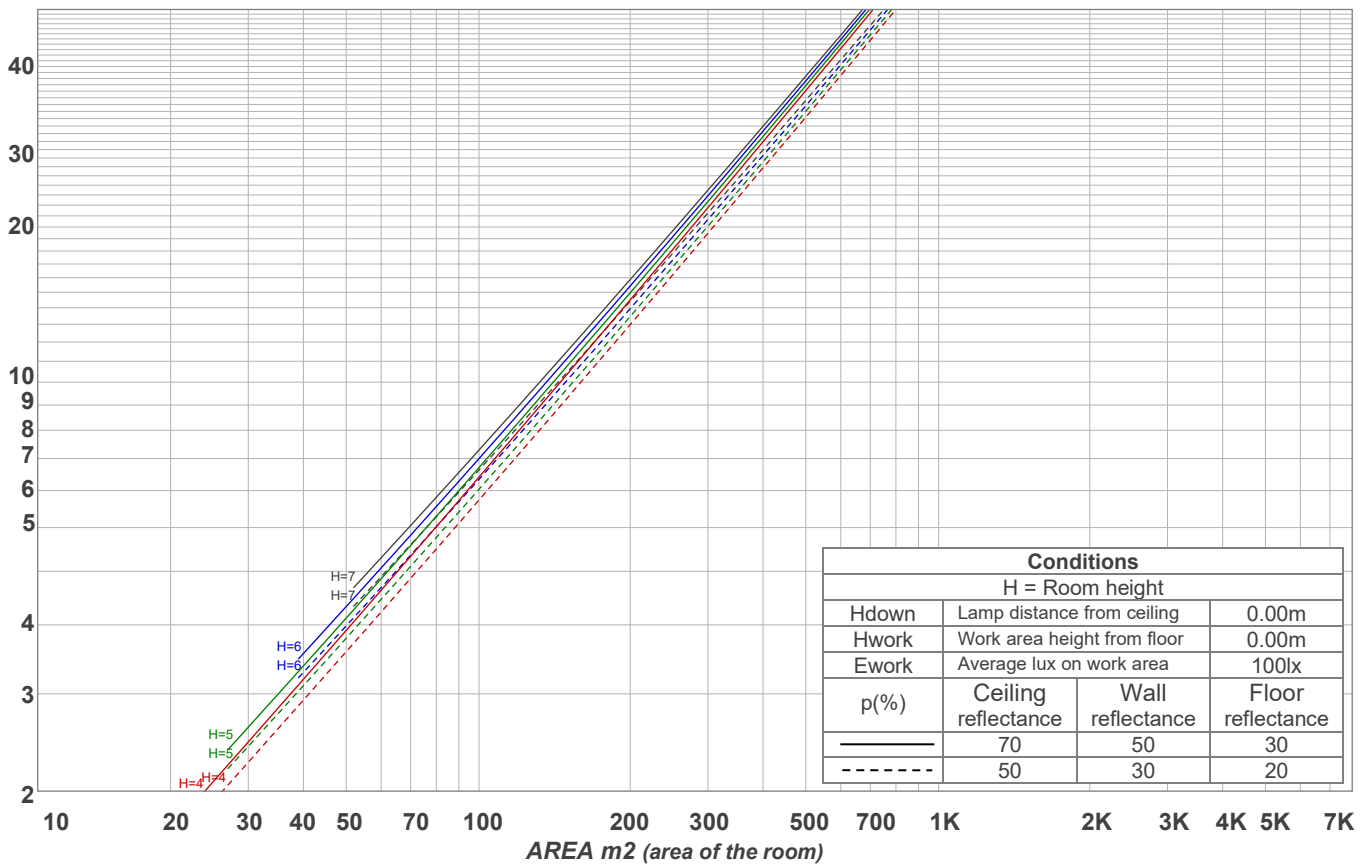
#### Intensities in 270° c-plane

0°	2°	4°	6°	8°	10°	12°	14°	16°	18°	20°	22°	24°	26°	28°	30°	32°	34°	36°	38°
6304	6304	5918	5337	4638	3897	3182	2546	2041	1641	1328	1076	857	641	429	273	149	68	36	26
100%	100%	94%	85%	74%	62%	50%	40%	32%	26%	21%	17%	14%	10%	7%	4%	2%	1%	1%	0%

Beam angle 50%	Field angle 10%	Cutoff angle 2,5%	Intensity ratio in 120° cone	Intensity ratio in 90° cone
24.2°	52.2°	63.7°	99.4%	99.0%

LAMPS (number of lamps)  
50

### Light planning Luminaire budgetary diagram



### Luminaire budgetary diagram AREA m2 (area of the room) Coefficients of Utilization

Ceiling reflectance	80				70				50			30			10			0			
Wall reflectance	70	50	30	10	70	50	30	10	50	30	10	50	30	10	50	30	10	50	30	10	0
Floor reflectance	20	20	20	20	20	20	20	20	20	20	20	20	20	20	20	20	20	20	20	20	0
RCR	(RCR: Room Cavity Ratio)																				
	Room Values are expressed as percentage of Lumens delivered to the task surface																				
0	119	119	119	119	116	116	116	116	111	111	111	106	106	106	102	102	102	100	100	100	
1	115	113	111	109	112	110	109	107	106	105	104	103	102	101	99	99	98	96	96	96	
2	111	107	104	101	109	105	103	100	102	100	98	99	98	96	97	95	94	93	93	93	
3	107	102	98	95	105	101	97	95	98	96	93	96	94	92	94	92	90	89	89	89	
4	104	98	94	91	102	97	93	90	95	92	89	93	90	88	91	89	87	86	86	86	
5	100	94	90	87	99	93	89	86	92	88	86	90	87	85	89	86	84	83	83	83	
6	97	91	86	83	96	90	86	83	89	85	82	87	84	82	86	84	81	80	80	80	
7	94	88	83	80	93	87	83	80	86	82	80	85	82	79	84	81	79	78	78	78	
8	92	85	80	77	91	84	80	77	83	80	77	82	79	77	82	79	76	75	75	75	
9	89	82	78	75	88	82	77	75	81	77	74	80	77	74	79	76	74	73	73	73	
10	86	79	75	73	86	79	75	72	78	75	72	78	74	72	77	74	72	71	71	71	

### Zonal Lumen Summary

0°-10°	10°-20°	20°-30°	30°-40°	40°-50°	50°-60°	60°-70°	70°-80°	80°-90°
482 lm	640 lm	333 lm	47.4 lm	7.98 lm	3.47 lm	2.62 lm	2.82 lm	3.15 lm
90°-100°	100°-110°	110°-120°	120°-130°	130°-140°	140°-150°	150°-160°	160°-170°	170°-180°
0.000 lm	0.000 lm	0.000 lm	0.000 lm	0.000 lm	0.000 lm	0.000 lm	0.000 lm	0.000 lm