

Light efficiency:



Output: 832 lm

Light quality:

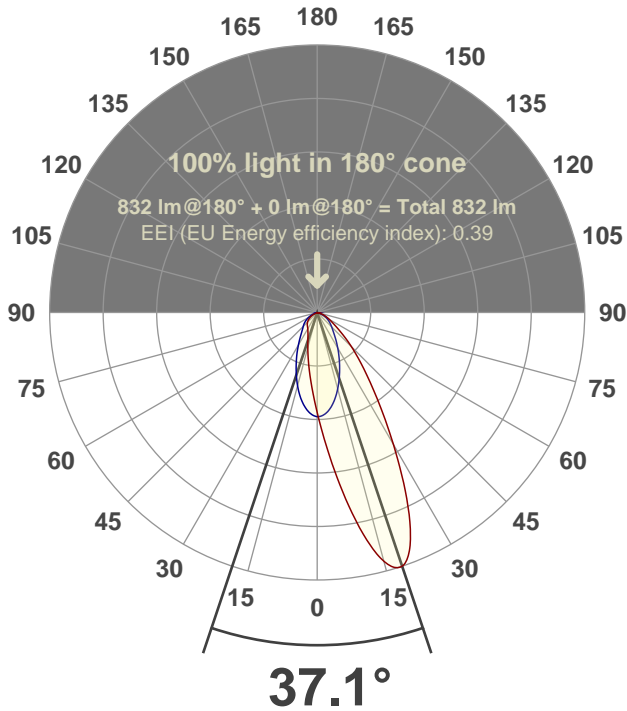


Peak: 1420 cd

Power: 20.8 W



Beam angle



Product Name:

CR4WW-SF-C20-30K-10°

Product Description:

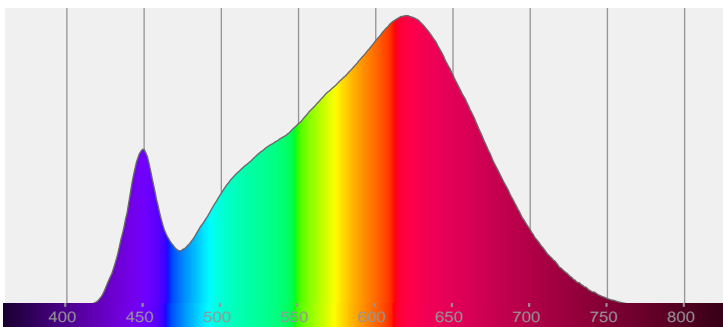
Core 4" Square Wall Wash C20 30k

Date and time:

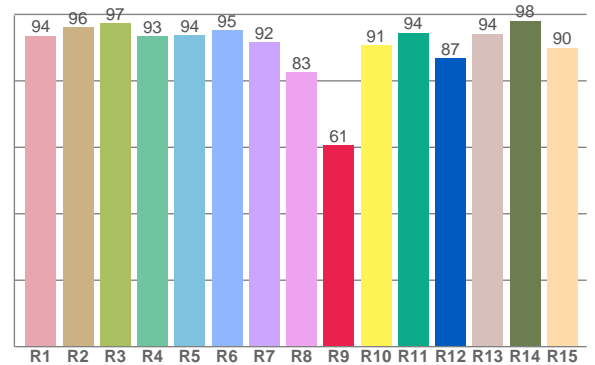
4/28/2021 8:28:46 PM

LUM: 832

Spectra



CRI: 92.9 (R1-R8)



Color parameters

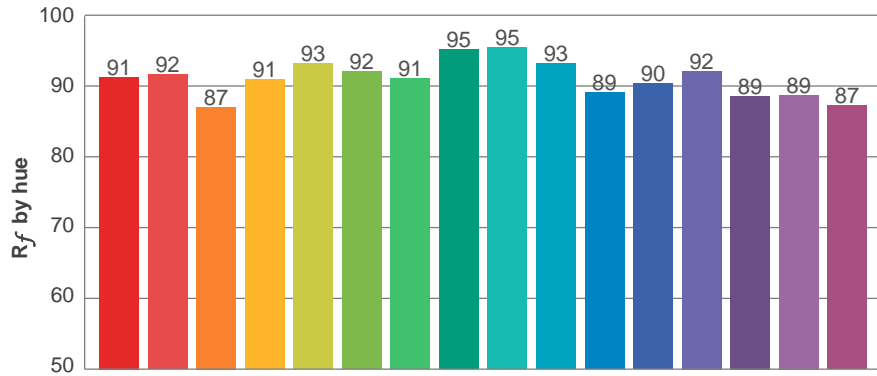
	Color rendering index	Red component	Color fidelity	Color gamut	Color quality scale	Color coordinate cie 1931	Color coordinate cie 1931	Color coordinate	Color coordinate	Color deviation from black body
	CRI	CRI R9	TM30 R _f	TM30 R _g	CQS	x	y	u	v	Δuv
	92.9	60.6	91.2	101.9	90.1	0.428	0.394	0.249	0.344	-0.0027

R_f 91.2
Fidelity index R_f

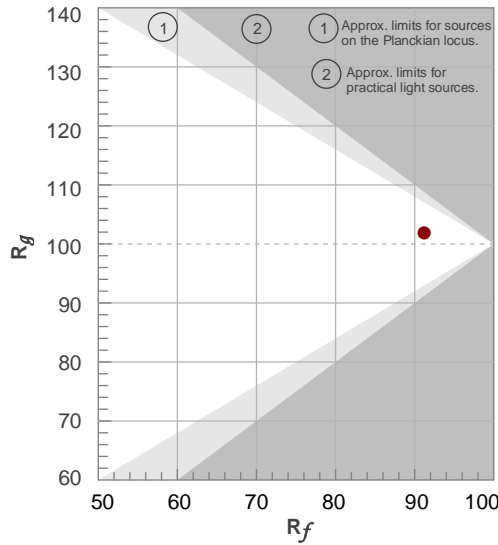
R_g 101.9
Gammut index R_g

TM30: 91.2

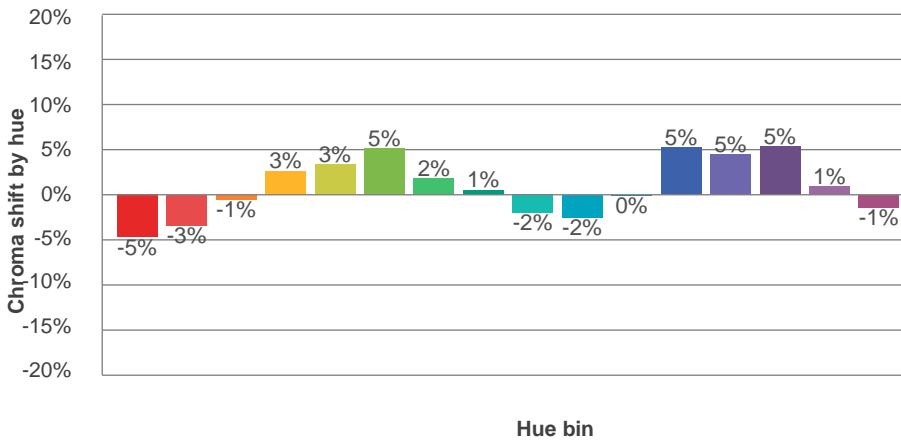
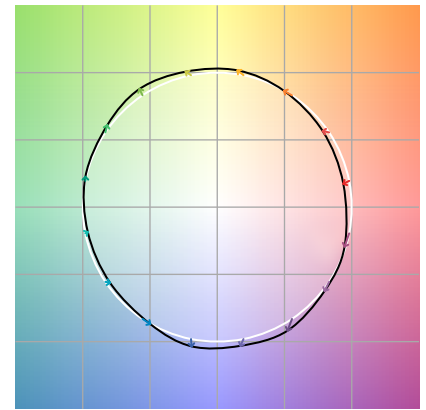
TM-30Color



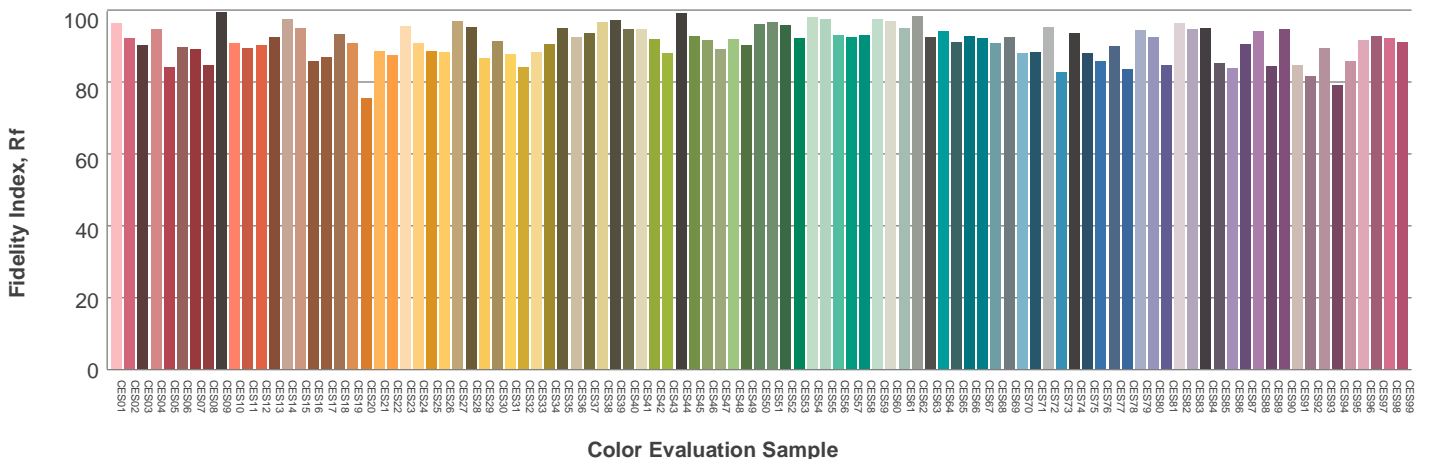
Hue Bin	R_f	Graphic shifts (%)	
		Chroma	Hue
1	91	-5%	-1%
2	92	-3%	3%
3	87	-1%	7%
4	91	3%	5%
5	93	3%	3%
6	92	5%	-1%
7	91	2%	-5%
8	95	1%	-3%
9	95	-2%	-1%
10	93	-2%	2%
11	89	0%	7%
12	90	5%	2%
13	92	5%	-3%
14	89	5%	-8%
15	89	1%	-7%
16	87	-1%	-10%



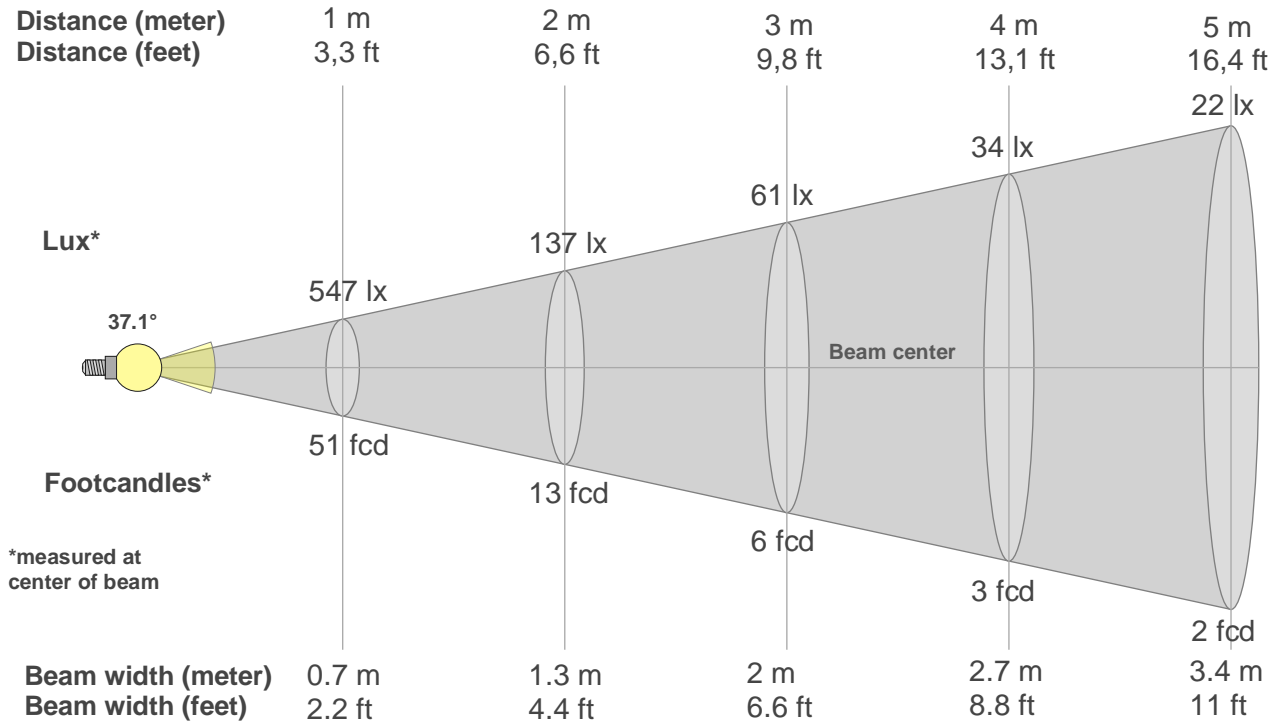
Color vector graphics



Color distortion



Beam details



Beam intensities from 1-20m

1m	2m	3m	4m	5m	6m	7m	8m	9m	10m	11m	12m	13m	14m	15m	16m	17m	18m	19m	20m
3.3ft	6.6ft	9.8ft	13.1ft	16.4ft	19.7ft	23ft	26.2ft	29.5ft	32.8ft	36.1ft	39.4ft	42.7ft	45.9ft	49.2ft	52.5ft	55.8ft	59.1ft	62.3ft	65.6ft
547lx	137lx	61lx	34lx	22lx	15lx	11lx	9lx	7lx	5lx	5lx	4lx	3lx	3lx	2lx	2lx	2lx	2lx	2lx	1lx
50.8fcd	12.7fcd	5.6fcd	3.2fcd	2fcd	1.4fcd	1fcd	0.8fcd	0.6fcd	0.5fcd	0.4fcd	0.4fcd	0.3fcd	0.3fcd	0.2fcd	0.2fcd	0.2fcd	0.2fcd	0.1fcd	0.1fcd

Intensities in 0° c-plane

0°	2°	4°	6°	8°	10°	12°	14°	16°	18°	20°	22°	24°	26°	28°	30°	32°	34°	36°	38°
547	615	715	831	957	1089	1218	1327	1394	1417	1393	1322	1216	1084	948	820	705	604	517	446
100%	113%	131%	152%	175%	199%	223%	243%	255%	259%	255%	242%	222%	198%	173%	150%	129%	110%	95%	82%

Intensities in 90° c-plane

0°	2°	4°	6°	8°	10°	12°	14°	16°	18°	20°	22°	24°	26°	28°	30°	32°	34°	36°	38°
547	551	542	529	511	489	463	436	406	377	348	320	293	267	244	221	200	182	165	150
100%	101%	99%	97%	94%	89%	85%	80%	74%	69%	64%	59%	54%	49%	45%	40%	37%	33%	30%	27%

Intensities in 180° c-plane

0°	2°	4°	6°	8°	10°	12°	14°	16°	18°	20°	22°	24°	26°	28°	30°	32°	34°	36°	38°
547	462	401	350	306	267	235	207	182	162	145	132	121	113	106	100	95	92	88	85
100%	84%	73%	64%	56%	49%	43%	38%	33%	30%	26%	24%	22%	21%	19%	18%	17%	17%	16%	16%

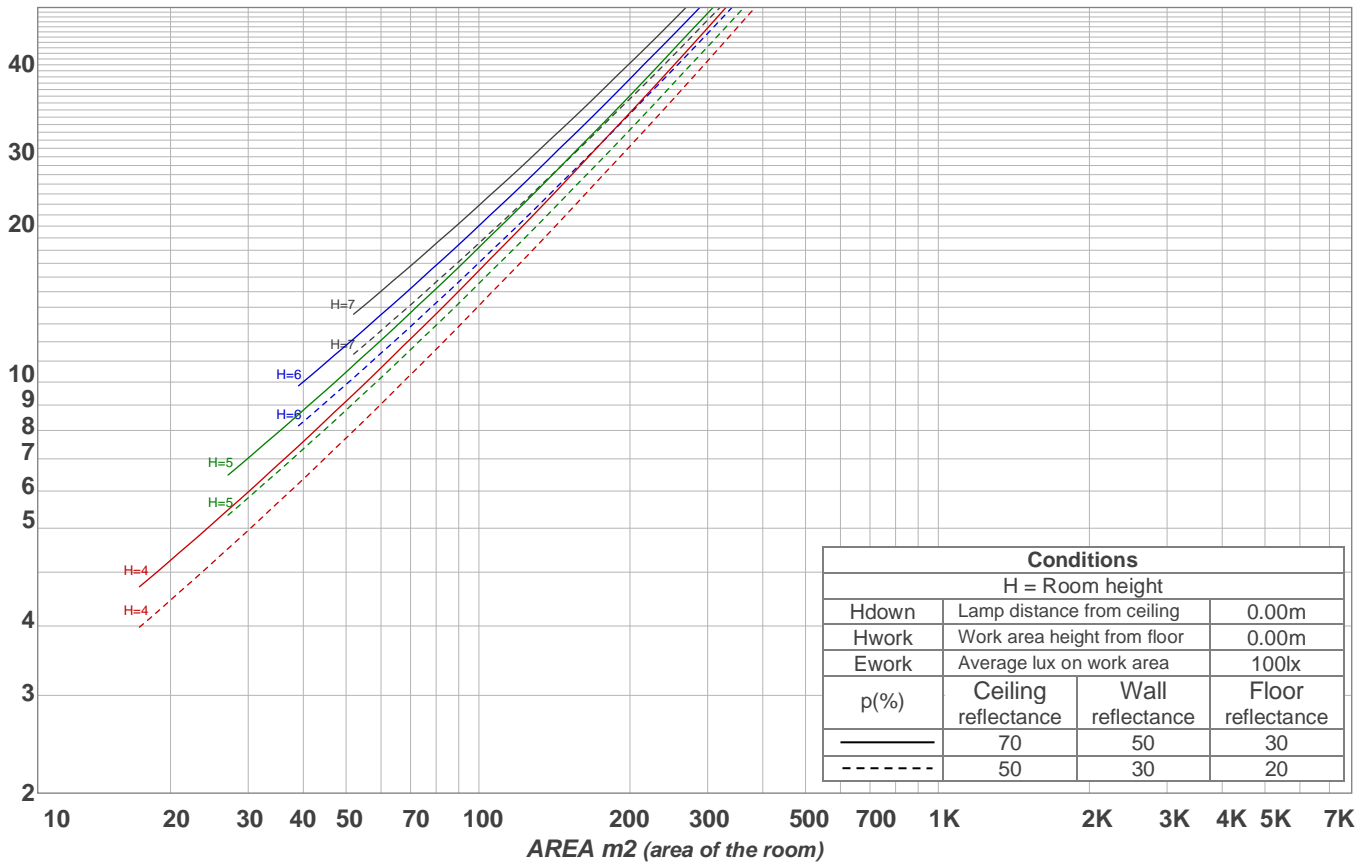
Intensities in 270° c-plane

0°	2°	4°	6°	8°	10°	12°	14°	16°	18°	20°	22°	24°	26°	28°	30°	32°	34°	36°	38°
547	547	536	519	499	475	448	419	388	358	328	300	273	248	224	202	183	165	150	137
100%	100%	98%	95%	91%	87%	82%	77%	71%	66%	60%	55%	50%	45%	41%	37%	33%	30%	27%	25%

Beam angle 50%	Field angle 10%	Cutoff angle 2,5%	Intensity ratio in 120° cone	Intensity ratio in 90° cone
37.1°	97°	143.1°	91.9%	77.1%

LAMPS (number of lamps) 50

Light planning Luminaire budgetary diagram



Luminaire budgetary diagram AREA m2 (area of the room) Coefficients of Utilization

Ceiling reflectance	80				70				50			30			10			0			
Wall reflectance	70	50	30	10	70	50	30	10	50	30	10	50	30	10	50	30	10	50	30	10	0
Floor reflectance	20	20	20	20	20	20	20	20	20	20	20	20	20	20	20	20	20	20	20	20	0
RCR	(RCR: Room Cavity Ratio)																				
	Room Values are expressed as percentage of Lumens delivered to the task surface																				
0	119	119	119	119	116	116	116	116	111	111	111	106	106	106	102	102	102	100	100	100	100
1	112	108	105	102	109	106	103	100	102	99	97	98	96	94	94	93	92	90	90	90	90
2	104	98	93	88	102	96	91	87	93	89	85	90	86	83	87	84	82	80	80	80	80
3	97	89	83	78	95	87	82	77	85	80	76	82	78	74	80	76	73	71	71	71	71
4	91	81	74	69	89	80	74	68	78	72	68	76	71	67	74	69	66	64	64	64	64
5	85	75	67	62	83	74	67	62	72	66	61	70	65	60	68	64	60	58	58	58	58
6	80	69	61	56	78	68	61	56	66	60	56	65	59	55	63	58	55	53	53	53	53
7	75	64	56	51	73	63	56	51	62	55	51	60	55	51	59	54	50	49	49	49	49
8	71	59	52	47	69	59	52	47	57	51	47	56	51	47	55	50	46	45	45	45	45
9	67	55	48	44	65	55	48	43	54	48	43	53	47	43	52	47	43	41	41	41	41
10	63	52	45	40	62	51	45	40	50	44	40	49	44	40	49	44	40	38	38	38	38

Zonal Lumen Summary

0°-10°	10°-20°	20°-30°	30°-40°	40°-50°	50°-60°	60°-70°	70°-80°	80°-90°
54.1 lm	165 lm	205 lm	158 lm	109 lm	73.7 lm	45.1 lm	18.3 lm	3.84 lm
90°-100°	100°-110°	110°-120°	120°-130°	130°-140°	140°-150°	150°-160°	160°-170°	170°-180°
0.000 lm	0.000 lm	0.000 lm	0.000 lm	0.000 lm	0.000 lm	0.000 lm	0.000 lm	0.000 lm

End of Report