

Light efficiency:



Output: 1096 lm

Light quality:

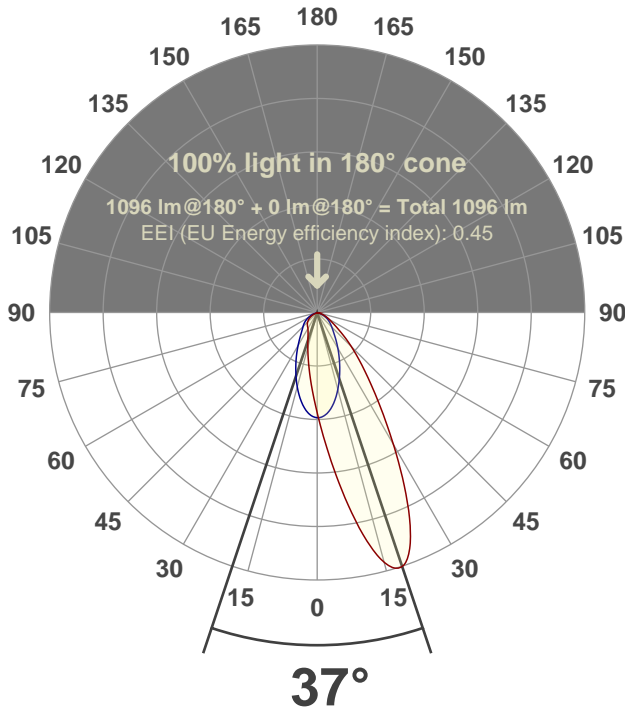


Peak: 1868 cd

Power: 30.3 W



Beam angle



Product Name:

CR4WW-SF-C28-30K-10°

Product Description:

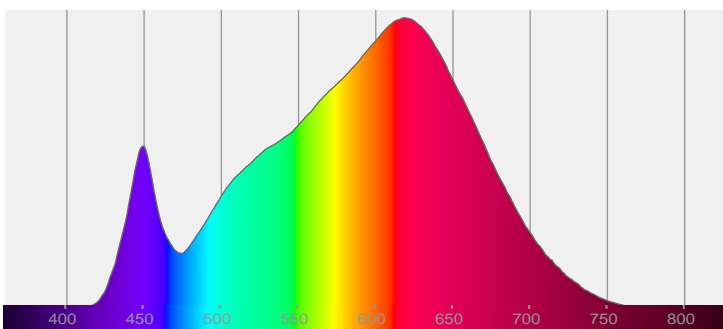
Core 4" Square Wall Wash C28 30k

Date and time:

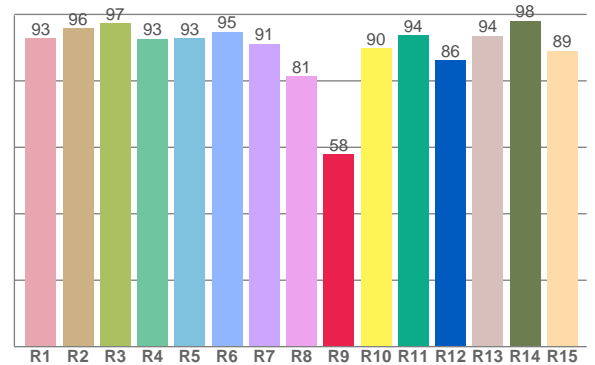
4/28/2021 8:44:03 PM

LUM: 1096

Spectra



CRI: 92.4 (R1-R8)



Color parameters

	Color rendering index	Red component	Color fidelity	Color gamut	Color quality scale	Color coordinate cie 1931	Color coordinate cie 1931	Color coordinate	Color coordinate	Color deviation from black body
	CRI	CRI R9	TM30 R _f	TM30 R _g	CQS	x	y	u	v	Δuv
	92.4	57.8	90.8	101.7	89.6	0.427	0.394	0.249	0.344	-0.0027

R_f 90.8

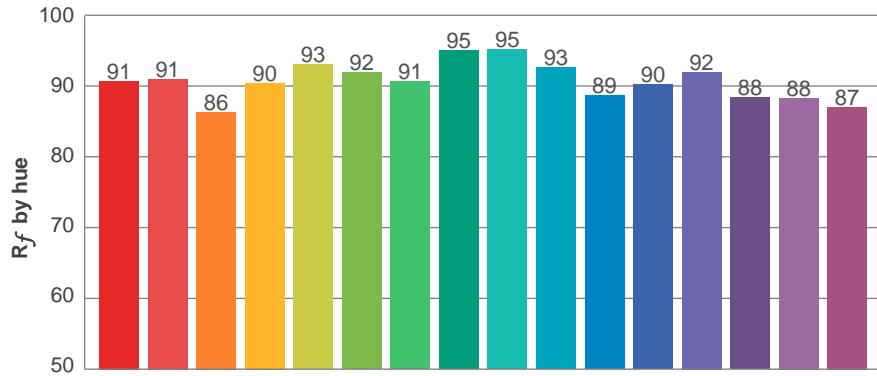
Fidelity index R_f

R_g 101.7

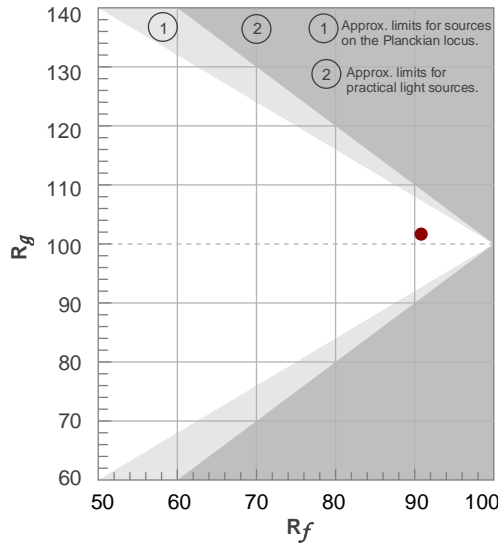
Gammut index R_g

TM30: 90.8

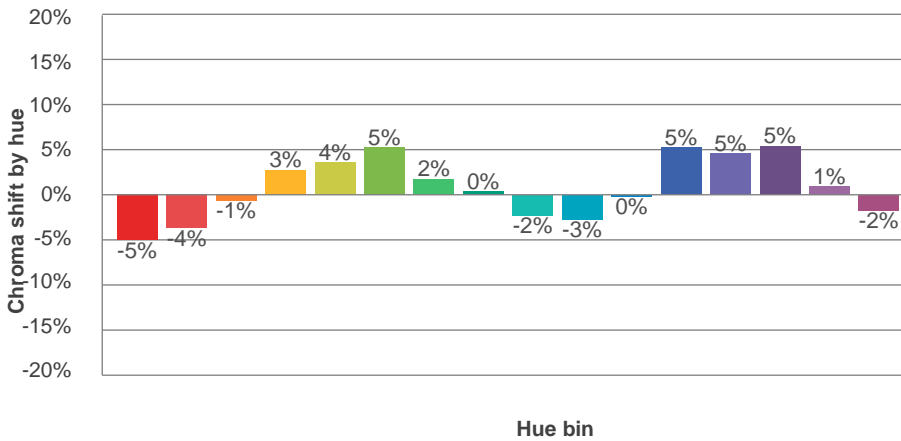
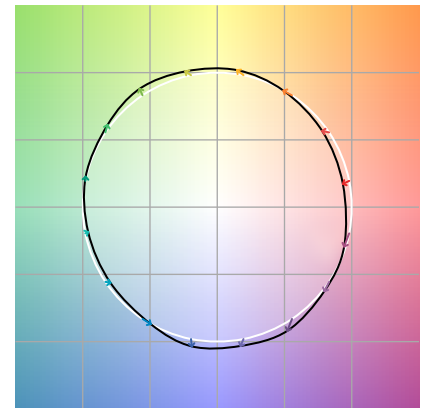
TM-30Color



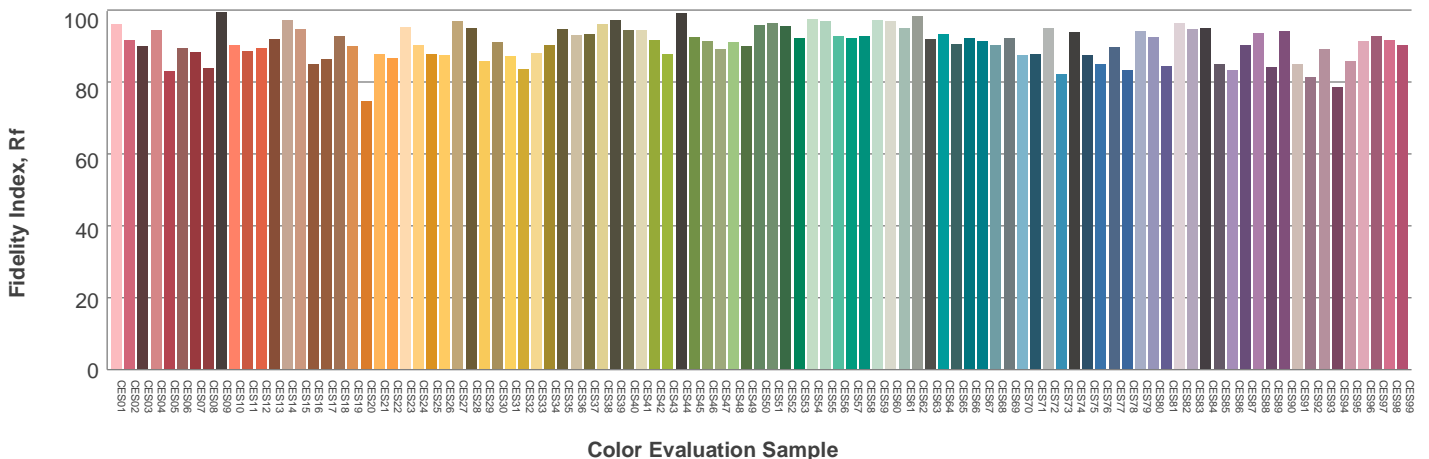
Hue Bin	R_f	Graphic shifts (%)	
		Chroma	Hue
1	91	-5%	-1%
2	91	-4%	4%
3	86	-1%	7%
4	90	3%	5%
5	93	4%	4%
6	92	5%	-1%
7	91	2%	-6%
8	95	0%	-3%
9	95	-2%	-1%
10	93	-3%	3%
11	89	0%	7%
12	90	5%	2%
13	92	5%	-3%
14	88	5%	-8%
15	88	1%	-8%
16	87	-2%	-10%



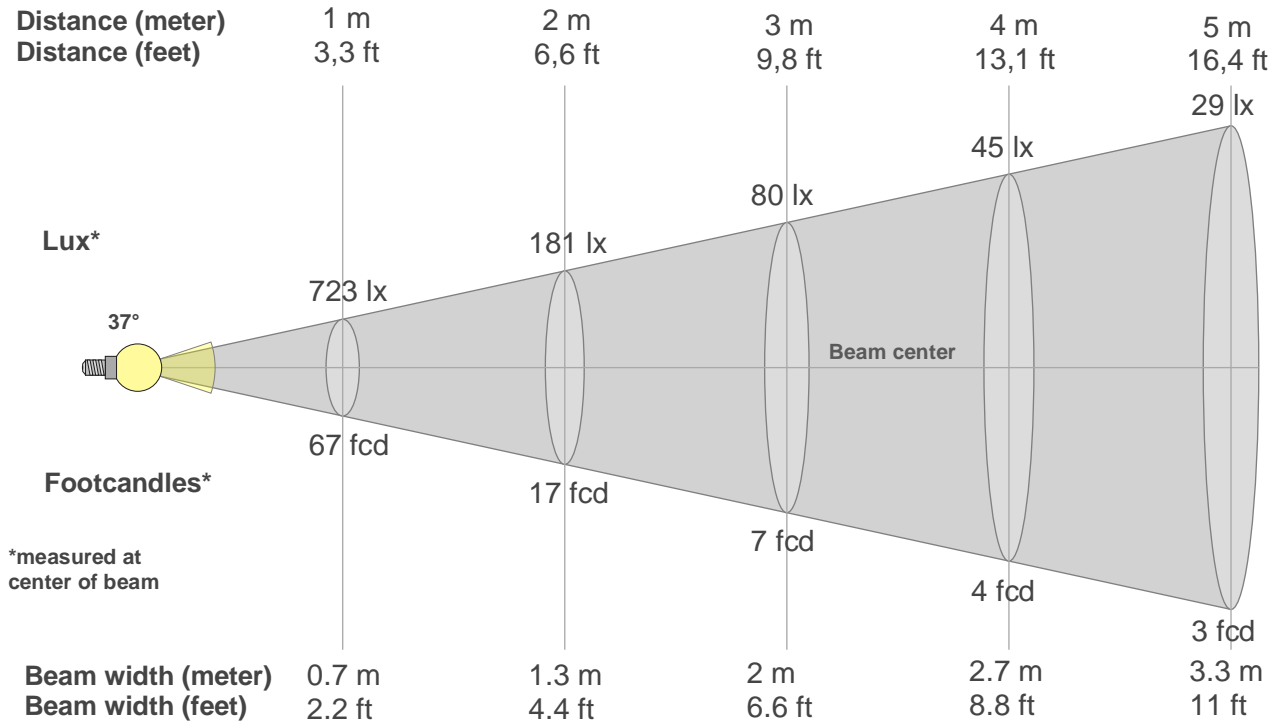
Color vector graphics



Color distortion



Beam details



Beam intensities from 1-20m

1m	2m	3m	4m	5m	6m	7m	8m	9m	10m	11m	12m	13m	14m	15m	16m	17m	18m	19m	20m
3.3ft	6.6ft	9.8ft	13.1ft	16.4ft	19.7ft	23ft	26.2ft	29.5ft	32.8ft	36.1ft	39.4ft	42.7ft	45.9ft	49.2ft	52.5ft	55.8ft	59.1ft	62.3ft	65.6ft
723lx	181lx	80lx	45lx	29lx	20lx	15lx	11lx	9lx	7lx	6lx	5lx	4lx	4lx	3lx	3lx	3lx	2lx	2lx	2lx
67.2fcd	16.8fcd	7.5fcd	4.2fcd	2.7fcd	1.9fcd	1.4fcd	1.1fcd	0.8fcd	0.7fcd	0.6fcd	0.5fcd	0.4fcd	0.3fcd	0.3fcd	0.3fcd	0.2fcd	0.2fcd	0.2fcd	0.2fcd

Intensities in 0° c-plane

0°	2°	4°	6°	8°	10°	12°	14°	16°	18°	20°	22°	24°	26°	28°	30°	32°	34°	36°	38°
723	814	943	1097	1264	1439	1611	1754	1840	1867	1834	1742	1598	1426	1250	1080	924	792	681	586
100%	112%	130%	152%	175%	199%	223%	242%	254%	258%	253%	241%	221%	197%	173%	149%	128%	110%	94%	81%

Intensities in 90° c-plane

0°	2°	4°	6°	8°	10°	12°	14°	16°	18°	20°	22°	24°	26°	28°	30°	32°	34°	36°	38°
723	733	722	704	679	649	615	578	538	499	461	424	387	353	322	292	265	240	218	197
100%	101%	100%	97%	94%	90%	85%	80%	74%	69%	64%	59%	54%	49%	44%	40%	37%	33%	30%	27%

Intensities in 180° c-plane

0°	2°	4°	6°	8°	10°	12°	14°	16°	18°	20°	22°	24°	26°	28°	30°	32°	34°	36°	38°
723	610	531	461	403	353	309	272	239	213	191	173	158	147	138	130	124	119	116	111
100%	84%	73%	64%	56%	49%	43%	38%	33%	29%	26%	24%	22%	20%	19%	18%	17%	17%	16%	15%

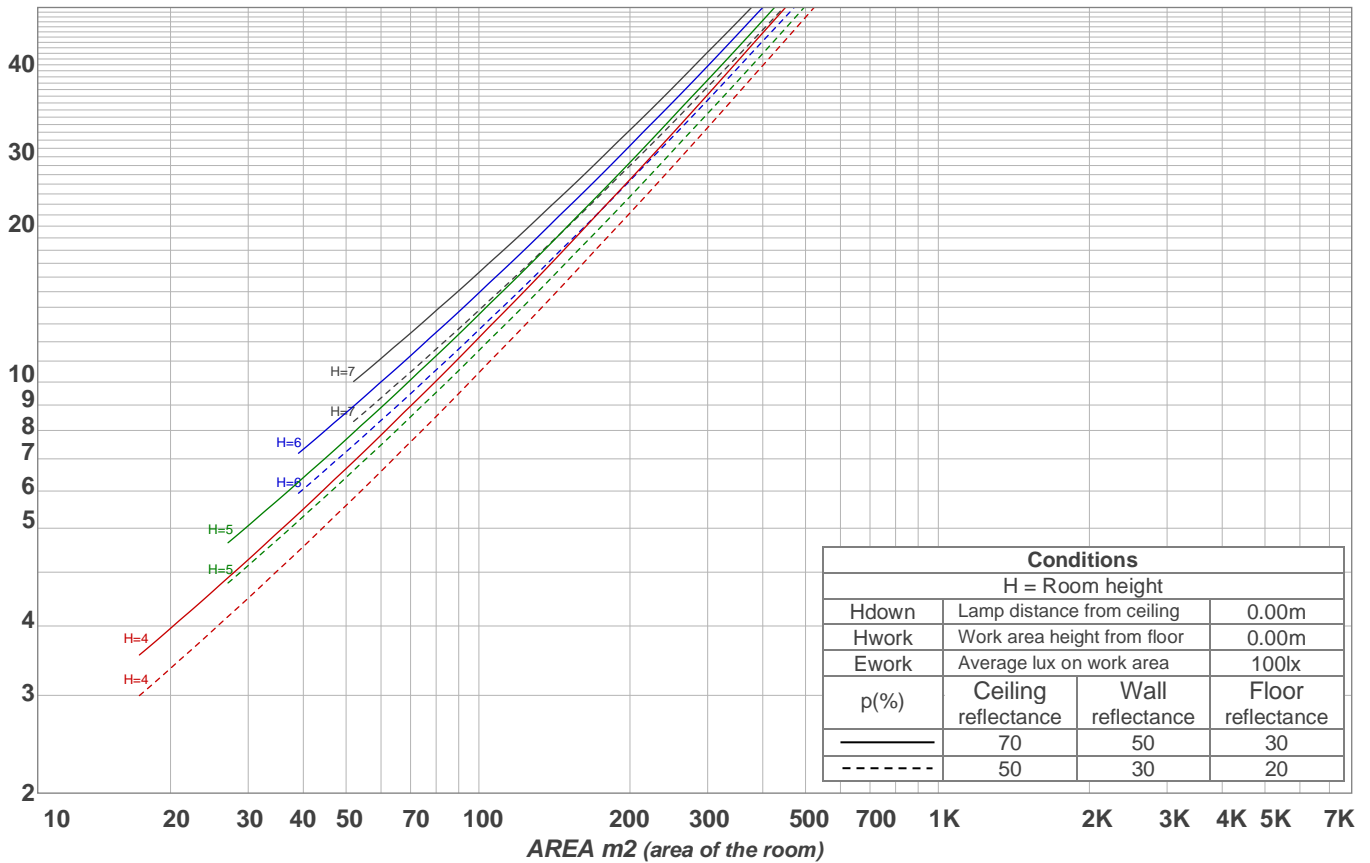
Intensities in 270° c-plane

0°	2°	4°	6°	8°	10°	12°	14°	16°	18°	20°	22°	24°	26°	28°	30°	32°	34°	36°	38°
723	729	715	695	667	635	598	559	519	479	439	401	366	332	300	271	244	221	201	184
100%	101%	99%	96%	92%	88%	83%	77%	72%	66%	61%	55%	51%	46%	41%	37%	34%	31%	28%	25%

Beam angle 50%	Field angle 10%	Cutoff angle 2,5%	Intensity ratio in 120° cone	Intensity ratio in 90° cone
37°	96.6°	143°	92.0%	77.2%

LAMPS (number of lamps) 50

Light planning Luminaire budgetary diagram



Luminaire budgetary diagram AREA m2 (area of the room) Coefficients of Utilization

Ceiling reflectance	80				70				50			30			10			0			
Wall reflectance	70	50	30	10	70	50	30	10	50	30	10	50	30	10	50	30	10	50	30	10	0
Floor reflectance	20	20	20	20	20	20	20	20	20	20	20	20	20	20	20	20	20	20	20	20	0
RCR	(RCR: Room Cavity Ratio)																				
	Room Values are expressed as percentage of Lumens delivered to the task surface																				
0	119	119	119	119	116	116	116	116	111	111	111	106	106	106	102	102	102	100	100	100	100
1	112	108	105	102	109	106	103	100	102	99	97	98	96	94	94	93	92	90	90	90	90
2	104	98	93	88	102	96	91	87	93	89	85	90	86	83	87	84	82	80	80	80	80
3	97	89	83	78	95	87	82	77	85	80	76	82	78	74	80	76	73	71	71	71	71
4	91	81	74	69	89	80	74	69	78	72	68	76	71	67	74	69	66	64	64	64	64
5	85	75	67	62	83	74	67	62	72	66	61	70	65	61	68	64	60	58	58	58	58
6	80	69	61	56	78	68	61	56	66	60	56	65	59	55	63	59	55	53	53	53	53
7	75	64	56	51	73	63	56	51	62	55	51	60	55	51	59	54	50	49	49	49	49
8	71	59	52	47	69	59	52	47	57	51	47	56	51	47	55	50	46	45	45	45	45
9	67	55	48	44	65	55	48	44	54	48	43	53	47	43	52	47	43	41	41	41	41
10	63	52	45	40	62	51	45	40	50	44	40	50	44	40	49	44	40	38	38	38	38

Zonal Lumen Summary

0°-10°	10°-20°	20°-30°	30°-40°	40°-50°	50°-60°	60°-70°	70°-80°	80°-90°
71.6 lm	219 lm	271 lm	208 lm	143 lm	96.8 lm	59.3 lm	24.1 lm	4.68 lm
90°-100°	100°-110°	110°-120°	120°-130°	130°-140°	140°-150°	150°-160°	160°-170°	170°-180°
0.000 lm	0.000 lm	0.000 lm	0.000 lm	0.000 lm	0.000 lm	0.000 lm	0.000 lm	0.000 lm

End of Report