

Light efficiency:



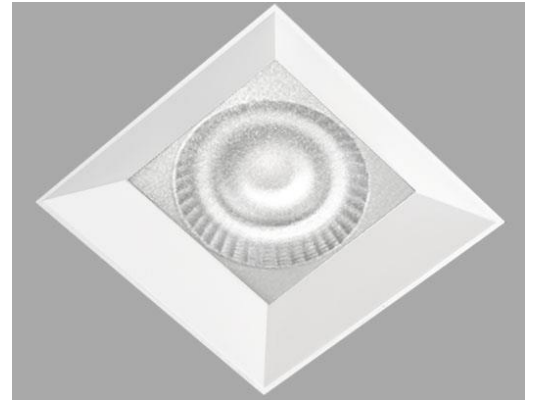
Output: 2791 lm

Light quality:

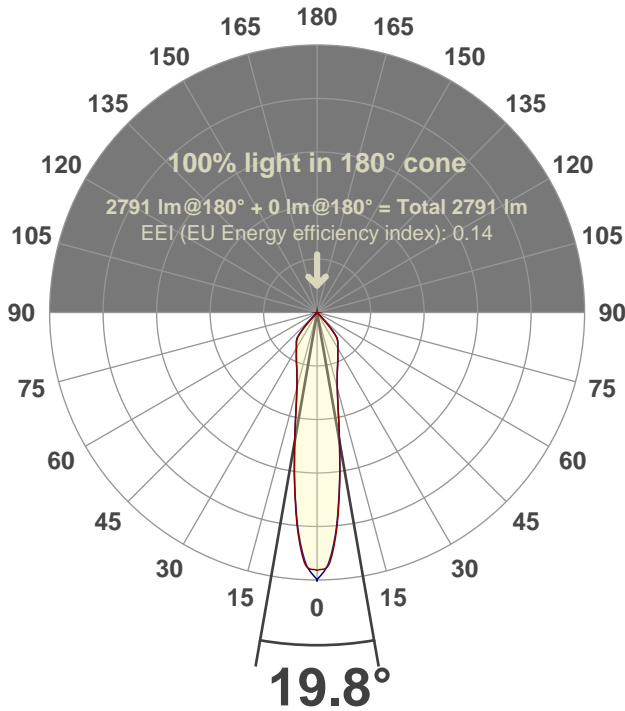


Peak: 7980 cd

Power: 27.5 W



Beam angle



Test number:

CR6D-SF-OR-C23-30K-19°-Rev1

Luminaire Model:

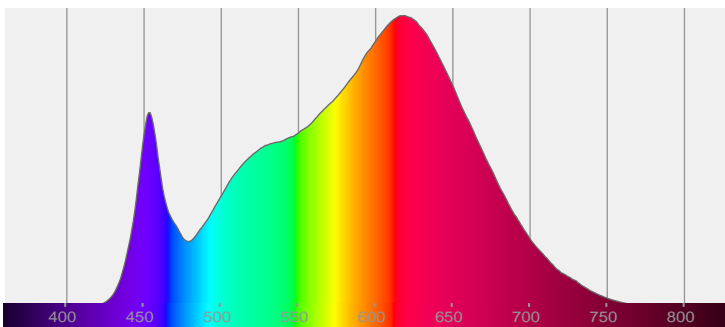
Core 6" Square OpenRegress-C23-30k-19°

Date and time:

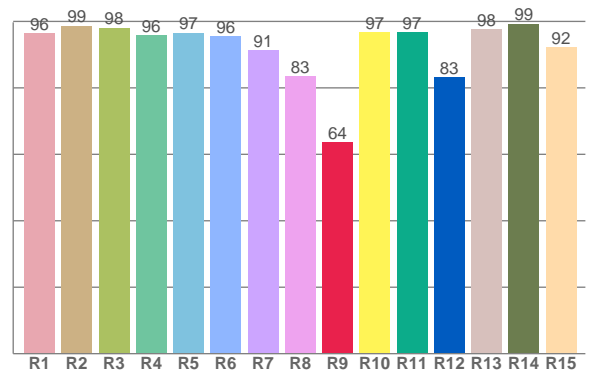
2/3/2022 10:39:31 PM

LUM: 2791

Spectra



CRI: 94.5 (R1-R8)



Color parameters

Color rendering index	Red component	Color fidelity	Color gamut	Color quality scale	Color coordinate cie 1931	Color coordinate cie 1931	Color coordinate	Color coordinate	Color deviation from black body
CRI	CRI R9	TM30 R _f	TM30 R _g	CQS	x	y	u	v	Δuv
94.5	63.7	92.1	100.6	91.6	0.425	0.392	0.248	0.343	-0.0033

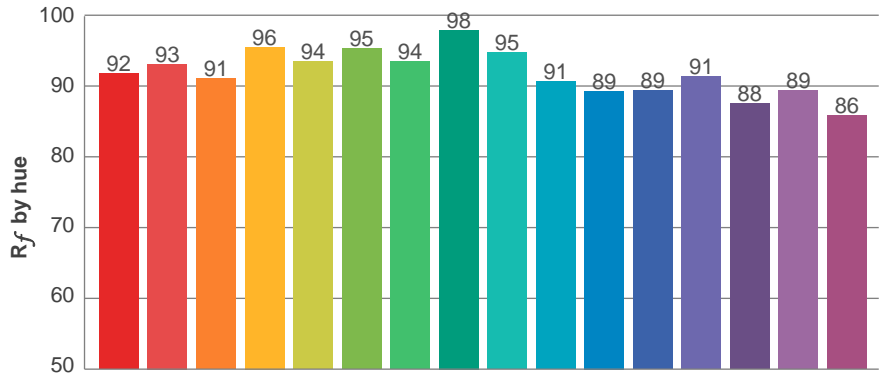
R_f 92.1

Fidelity index R_f

R_g 100.6

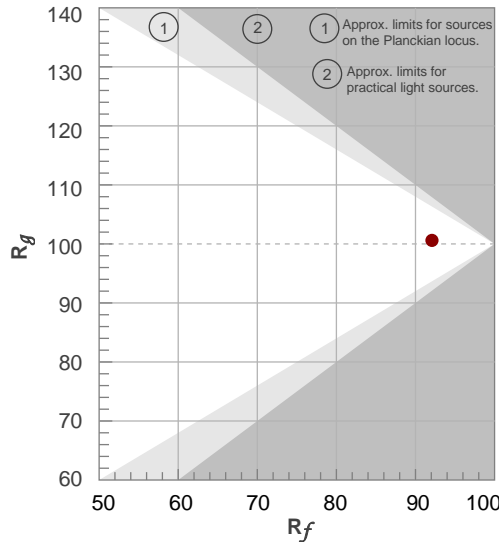
Gammut index R_g

TM30: 92.1

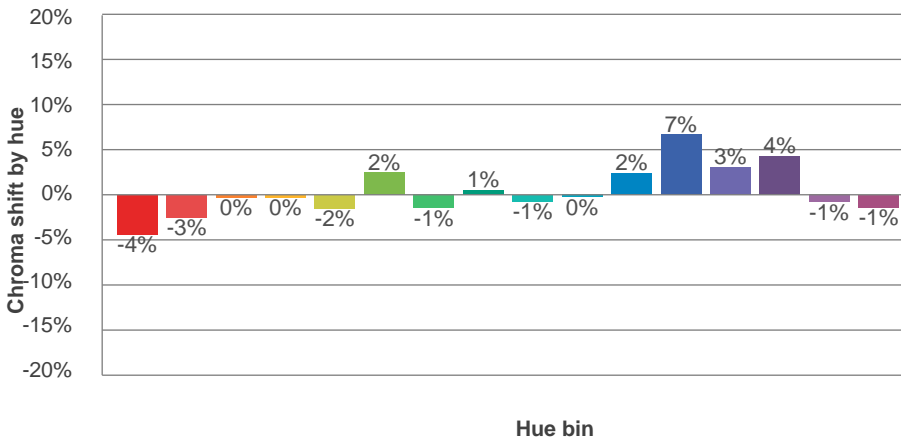
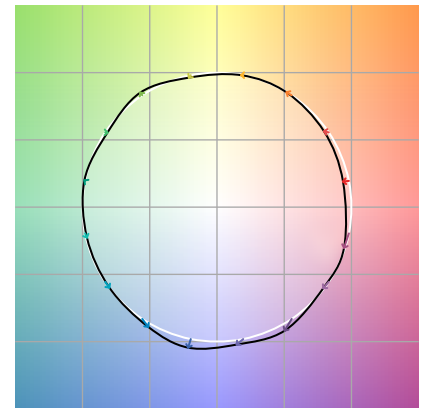


TM-30Color

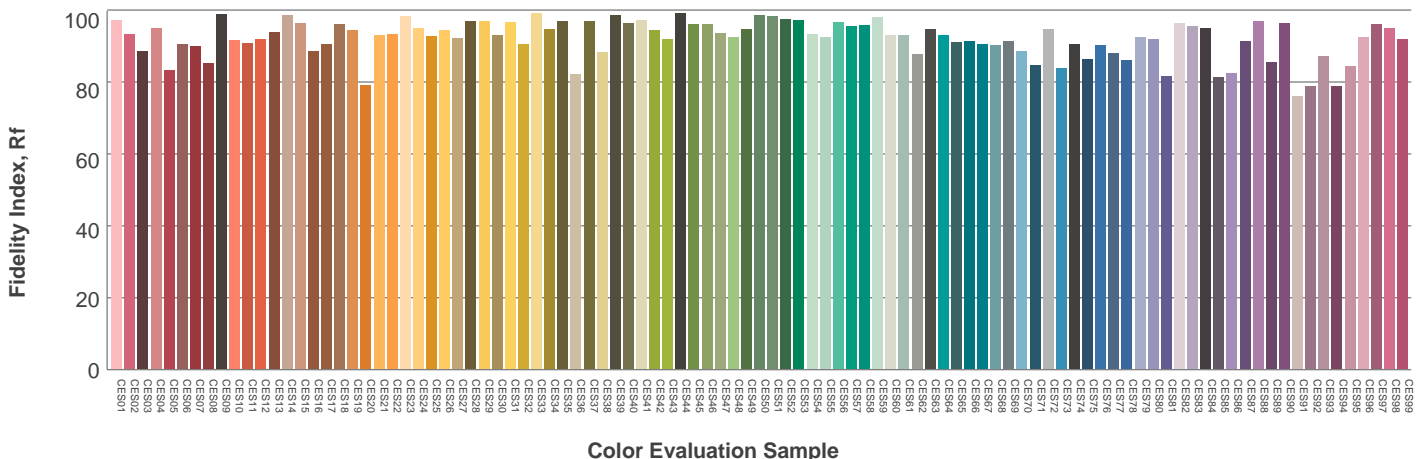
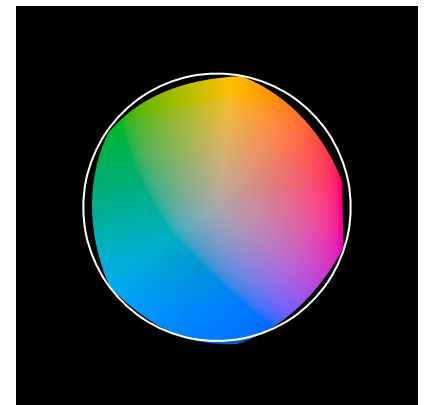
Hue Bin	R_f	Graphic shifts (%)	
		Chroma	Hue
1	92	-4%	0%
2	93	-3%	3%
3	91	0%	4%
4	96	0%	1%
5	94	-2%	2%
6	95	2%	0%
7	94	-1%	-1%
8	98	1%	0%
9	95	-1%	3%
10	91	0%	5%
11	89	2%	7%
12	89	7%	-1%
13	91	3%	-6%
14	88	4%	-9%
15	89	-1%	-6%
16	86	-1%	-11%



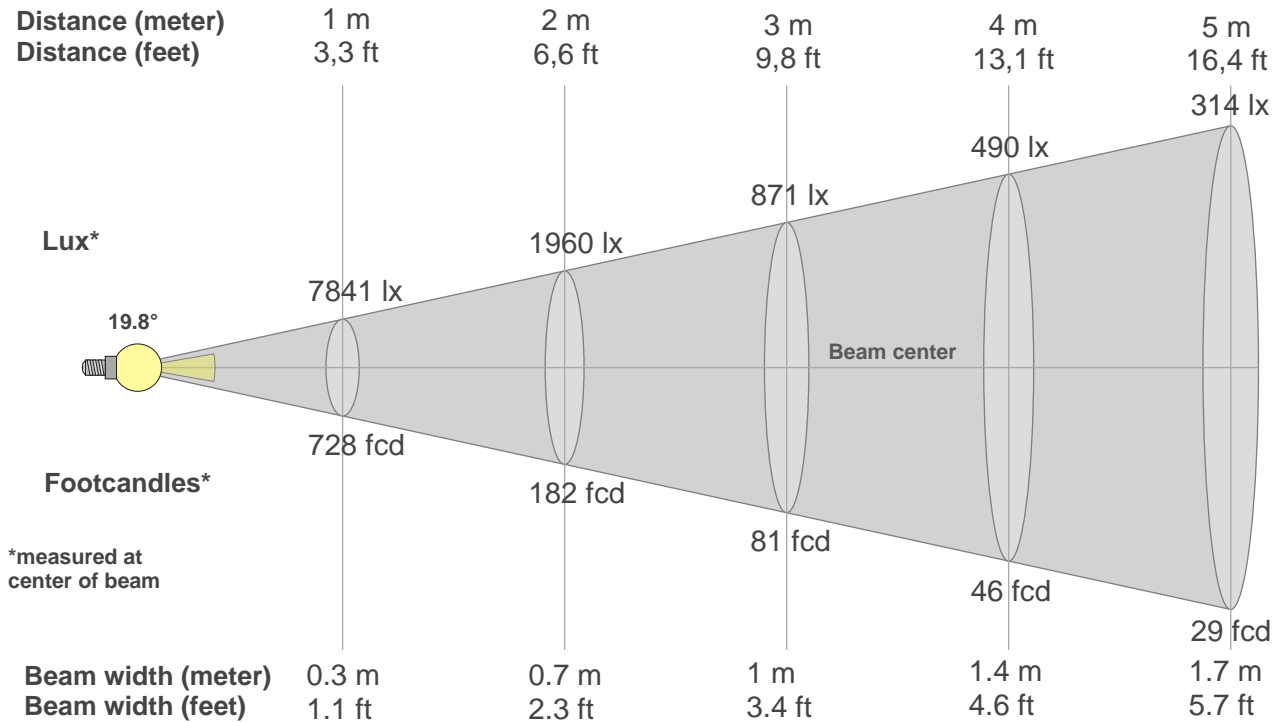
Color vector graphics



Color distortion



Beam details



Beam intensities from 1-20m

1m	2m	3m	4m	5m	6m	7m	8m	9m	10m	11m	12m	13m	14m	15m	16m	17m	18m	19m	20m
3.3ft	6.6ft	9.8ft	13.1ft	16.4ft	19.7ft	23ft	26.2ft	29.5ft	32.8ft	36.1ft	39.4ft	42.7ft	45.9ft	49.2ft	52.5ft	55.8ft	59.1ft	62.3ft	65.6ft
7841lx	1960lx	871lx	490lx	314lx	218lx	160lx	123lx	97lx	78lx	65lx	54lx	46lx	40lx	35lx	31lx	27lx	24lx	22lx	20lx
728.5fcd	182.1fcd	80.9fcd	45.5fcd	29.1fcd	20.2fcd	14.9fcd	11.4fcd	9fcd	7.3fcd	6fcd	5.1fcd	4.3fcd	3.7fcd	3.2fcd	2.8fcd	2.5fcd	2.2fcd	2fcd	1.8fcd

Intensities in 0° c-plane

0°	2°	4°	6°	8°	10°	12°	14°	16°	18°	20°	22°	24°	26°	28°	30°	32°	34°	36°	38°
7841	7590	7005	6038	4913	3856	3090	2560	2204	1962	1786	1650	1531	1424	1328	1243	1170	1108	1043	947
100%	97%	89%	77%	63%	49%	39%	33%	28%	25%	23%	21%	20%	18%	17%	16%	15%	14%	13%	12%

Intensities in 90° c-plane

0°	2°	4°	6°	8°	10°	12°	14°	16°	18°	20°	22°	24°	26°	28°	30°	32°	34°	36°	38°
7841	7629	6936	5976	4895	3877	3088	2566	2210	1964	1787	1648	1531	1423	1328	1246	1173	1111	1054	969
100%	97%	88%	76%	62%	49%	39%	33%	28%	25%	23%	21%	20%	18%	17%	16%	15%	14%	13%	12%

Intensities in 180° c-plane

0°	2°	4°	6°	8°	10°	12°	14°	16°	18°	20°	22°	24°	26°	28°	30°	32°	34°	36°	38°
7841	7590	7005	6038	4913	3856	3090	2560	2204	1962	1786	1650	1531	1424	1328	1243	1170	1108	1043	947
100%	97%	89%	77%	63%	49%	39%	33%	28%	25%	23%	21%	20%	18%	17%	16%	15%	14%	13%	12%

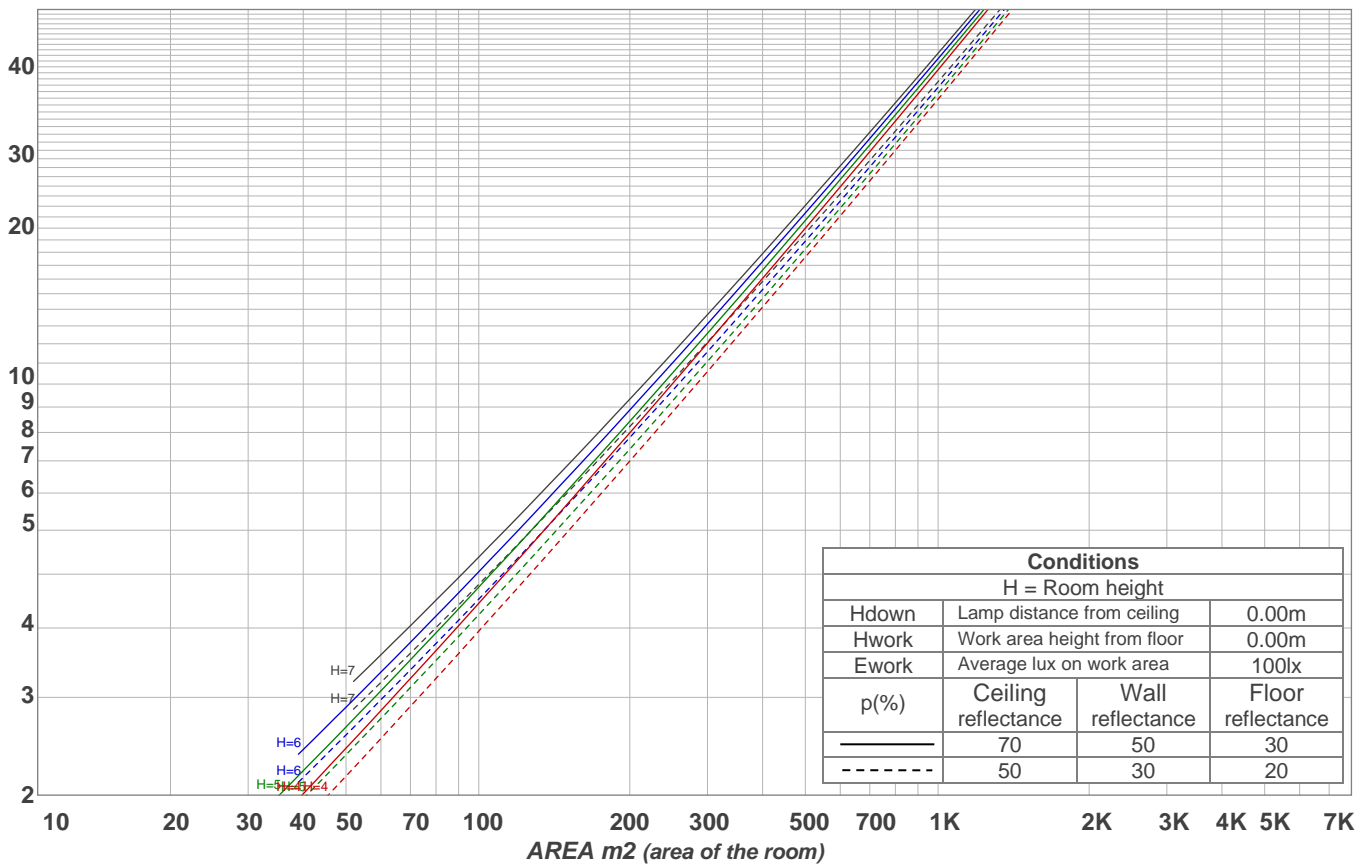
Intensities in 270° c-plane

0°	2°	4°	6°	8°	10°	12°	14°	16°	18°	20°	22°	24°	26°	28°	30°	32°	34°	36°	38°
7841	7629	6936	5976	4895	3877	3088	2566	2210	1964	1787	1648	1531	1423	1328	1246	1173	1111	1054	969
100%	97%	88%	76%	62%	49%	39%	33%	28%	25%	23%	21%	20%	18%	17%	16%	15%	14%	13%	12%

Beam angle 50%	Field angle 10%	Cutoff angle 2,5%	Intensity ratio in 120° cone	Intensity ratio in 90° cone
19.8°	80.2°	89.9°	99.1%	98.1%

LAMPS (number of lamps)
50

Light planning Luminaire budgetary diagram



Luminaire budgetary diagram AREA m2 (area of the room) Coefficients of Utilization

Ceiling reflectance	80				70				50			30			10			0
Wall reflectance	70	50	30	10	70	50	30	10	50	30	10	50	30	10	50	30	10	0
Floor reflectance	20	20	20	20	20	20	20	20	20	20	20	20	20	20	20	20	20	0
RCR	(RCR: Room Cavity Ratio)																	
	Room Values are expressed as percentage of Lumens delivered to the task surface																	
0	119	119	119	119	116	116	116	116	111	111	111	106	106	106	102	102	102	100
1	114	111	108	106	111	109	107	105	105	103	101	101	100	98	98	96	95	94
2	108	103	99	96	106	102	98	95	99	96	93	96	93	91	93	91	89	88
3	103	97	92	88	101	95	91	87	93	89	86	90	87	85	88	86	83	82
4	98	91	85	81	96	90	85	81	87	83	80	86	82	79	84	81	78	77
5	93	85	80	76	92	84	79	75	83	78	75	81	77	74	79	76	73	72
6	89	80	75	71	88	80	74	70	78	73	70	77	73	69	75	72	69	68
7	85	76	70	66	84	75	70	66	74	69	66	73	69	65	72	68	65	64
8	81	72	66	62	80	71	66	62	70	65	62	69	65	62	68	64	61	60
9	78	68	63	59	77	68	62	59	67	62	59	66	62	58	65	61	58	57
10	74	65	60	56	73	65	59	56	64	59	56	63	59	55	62	58	55	54

Zonal Lumen Summary

0°-10°	10°-20°	20°-30°	30°-40°	40°-50°	50°-60°	60°-70°	70°-80°	80°-90°
530 lm	682 lm	681 lm	667 lm	197 lm	9.09 lm	7.93 lm	8.49 lm	7.52 lm
90°-100°	100°-110°	110°-120°	120°-130°	130°-140°	140°-150°	150°-160°	160°-170°	170°-180°
0.000 lm	0.000 lm	0.000 lm	0.000 lm	0.000 lm	0.000 lm	0.000 lm	0.000 lm	0.000 lm