

Light efficiency:



Output: 2757 lm

Light quality:

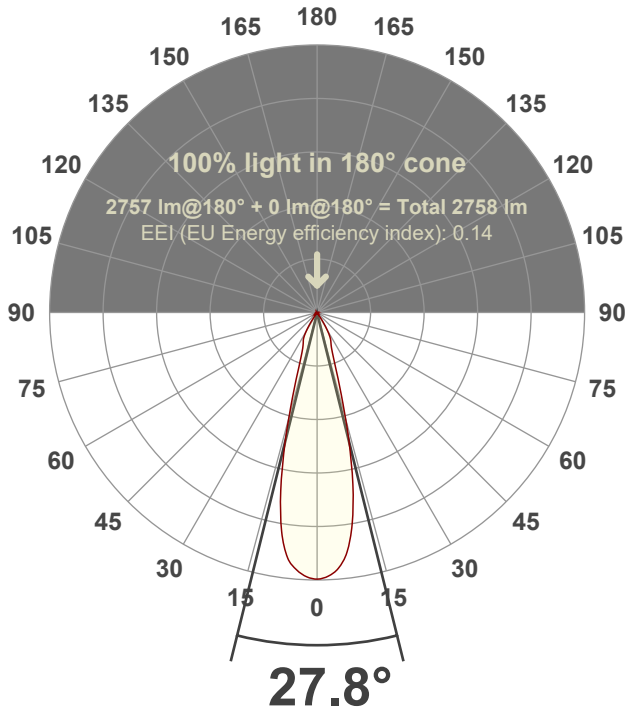


Peak: 9845 cd

Power: 28.5 W



Beam angle



Test number:

MSC-H-L-C24-30k-28°

Luminaire Model:

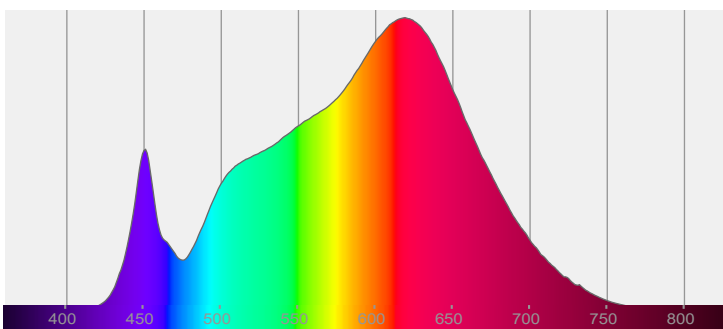
Mosaic Large Accent Head-C24-30k-28°

Date and time:

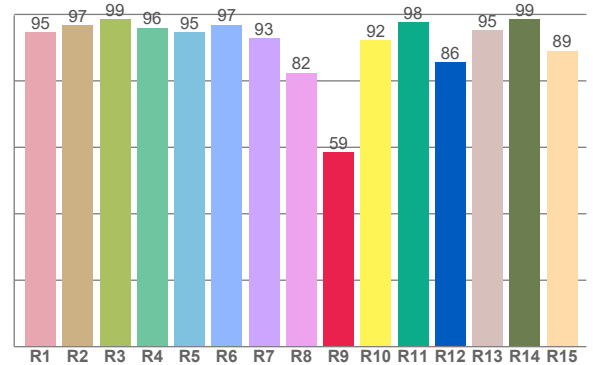
8/29/2022 2:54:24 PM

LUM: 2757

Spectra



CRI: 94.1 (R1-R8)



Color parameters

	Color rendering index	Red component	Color fidelity	Color gamut	Color quality scale	Color coordinate cie 1931	Color coordinate cie 1931	Color coordinate	Color coordinate	Color deviation from black body
	CRI	CRI R9	TM30 R _f	TM30 R _g	CQS	x	y	u	v	Δuv
	94.1	58.5	93.2	99.8	92.4	0.432	0.405	0.247	0.347	0.0011

R_f 93.2

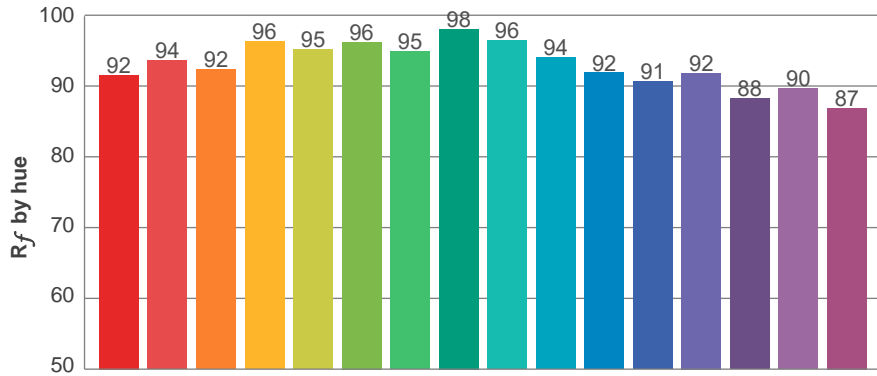
Fidelity index R_f

R_g 99.8

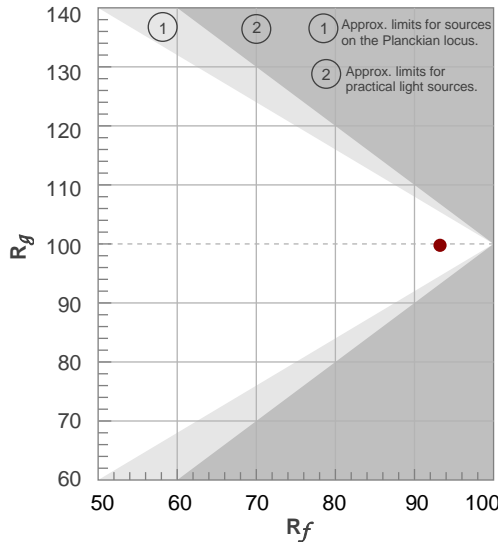
Gammut index R_g

TM30: 93.2

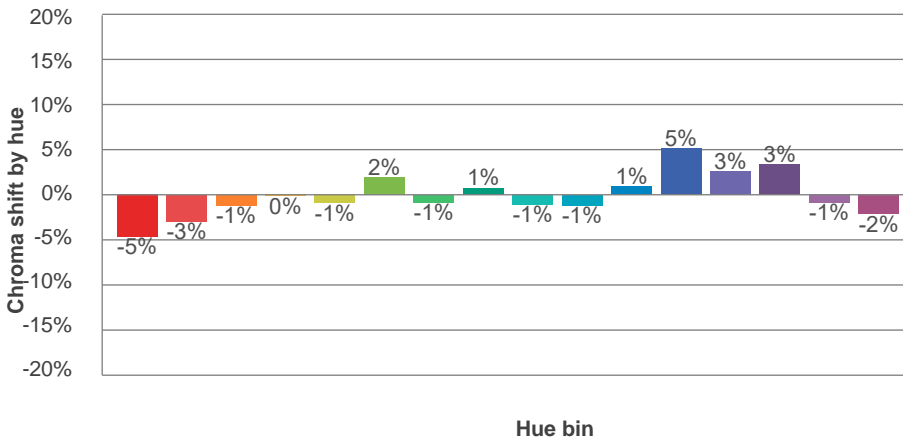
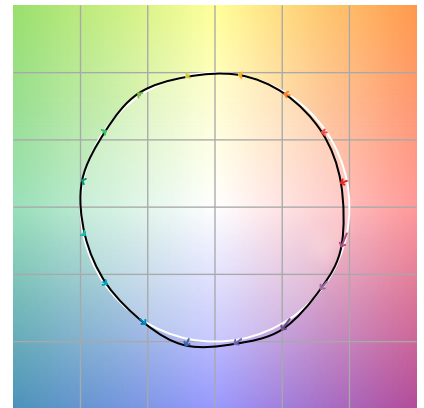
TM-30Color



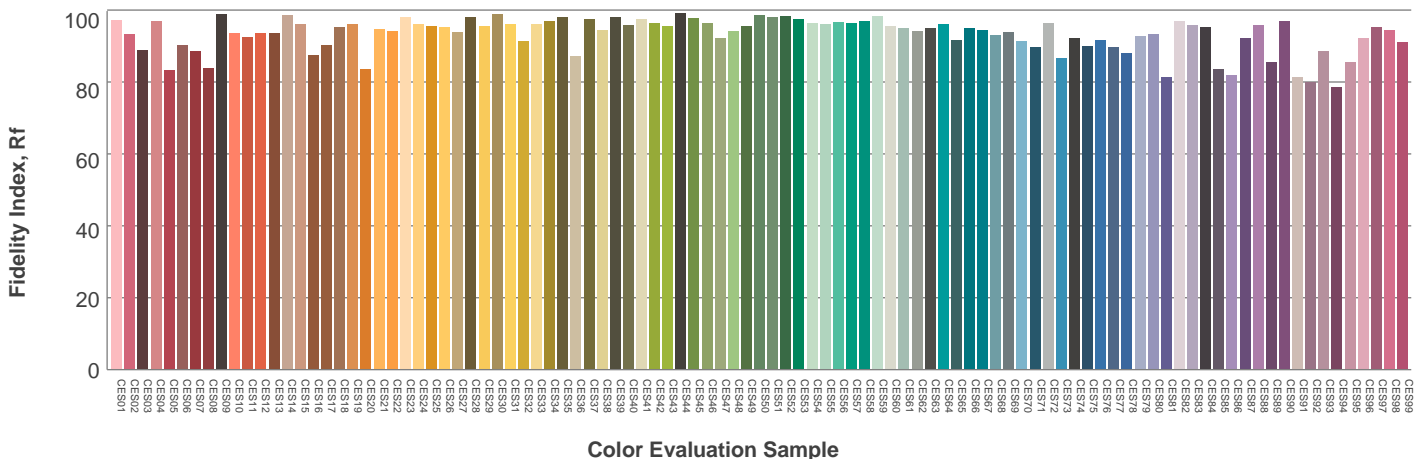
Hue Bin	R_f	Graphic shifts (%)	
		Chroma	Hue
1	92	-5%	-1%
2	94	-3%	2%
3	92	-1%	4%
4	96	0%	2%
5	95	-1%	2%
6	96	2%	0%
7	95	-1%	-2%
8	98	1%	0%
9	96	-1%	1%
10	94	-1%	3%
11	92	1%	5%
12	91	5%	-1%
13	92	3%	-5%
14	88	3%	-9%
15	90	-1%	-7%
16	87	-2%	-10%



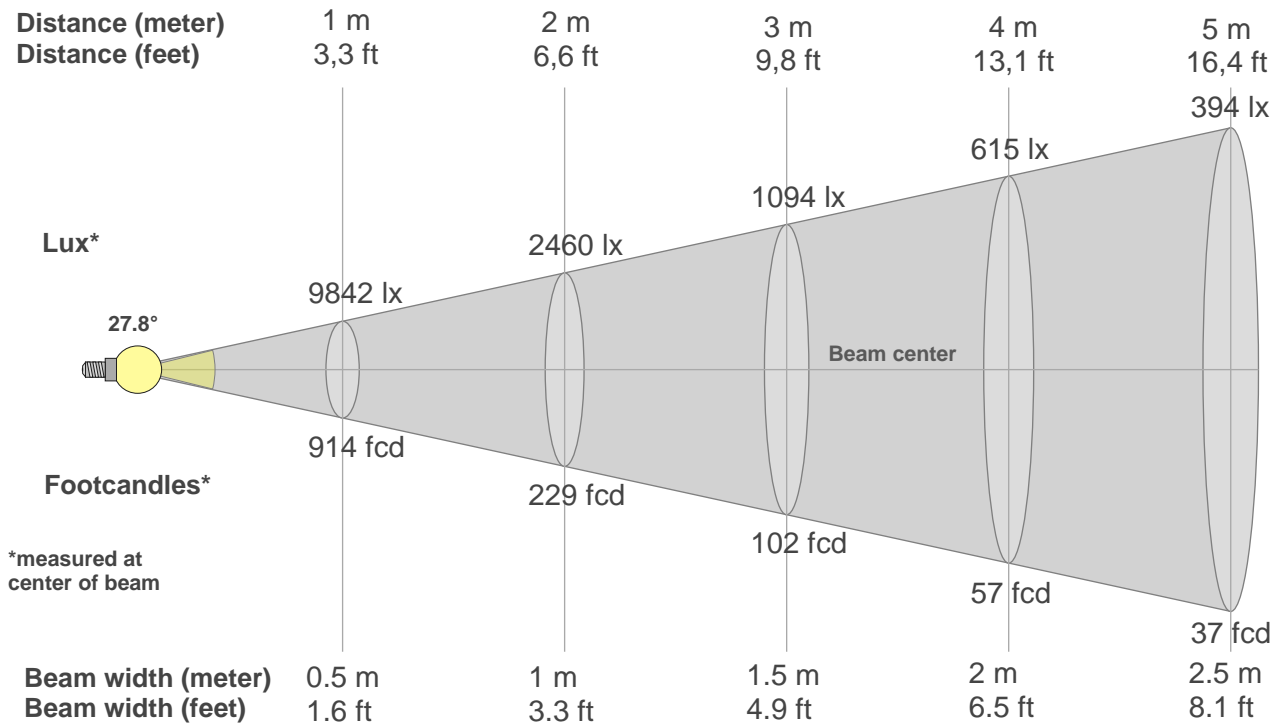
Color vector graphics



Color distortion



Beam details



Beam intensities from 1-20m

1m	2m	3m	4m	5m	6m	7m	8m	9m	10m	11m	12m	13m	14m	15m	16m	17m	18m	19m	20m
3.3ft	6.6ft	9.8ft	13.1ft	16.4ft	19.7ft	23ft	26.2ft	29.5ft	32.8ft	36.1ft	39.4ft	42.7ft	45.9ft	49.2ft	52.5ft	55.8ft	59.1ft	62.3ft	65.6ft
9842lx	2460lx	1094lx	615lx	394lx	273lx	201lx	154lx	122lx	98lx	81lx	68lx	58lx	50lx	44lx	38lx	34lx	30lx	27lx	25lx
914.3fcd	228.6fcd	101.6fcd	57.1fcd	36.6fcd	25.4fcd	18.7fcd	14.3fcd	11.3fcd	9.1fcd	7.6fcd	6.3fcd	5.4fcd	4.7fcd	4.1fcd	3.6fcd	3.2fcd	2.8fcd	2.5fcd	2.3fcd

Intensities in 0° c-plane

0°	2°	4°	6°	8°	10°	12°	14°	16°	18°	20°	22°	24°	26°	28°	30°	32°	34°	36°	38°
9842	9763	9565	9187	8540	7577	6334	4866	3493	2476	1830	1469	1274	1156	1016	797	557	325	138	31
100%	99%	97%	93%	87%	77%	64%	49%	35%	25%	19%	15%	13%	12%	10%	8%	6%	3%	1%	0%

Intensities in 90° c-plane

0°	2°	4°	6°	8°	10°	12°	14°	16°	18°	20°	22°	24°	26°	28°	30°	32°	34°	36°	38°
9842	9763	9565	9187	8540	7577	6334	4866	3493	2476	1830	1469	1274	1156	1016	797	557	325	138	31
100%	99%	97%	93%	87%	77%	64%	49%	35%	25%	19%	15%	13%	12%	10%	8%	6%	3%	1%	0%

Intensities in 180° c-plane

0°	2°	4°	6°	8°	10°	12°	14°	16°	18°	20°	22°	24°	26°	28°	30°	32°	34°	36°	38°
9842	9777	9591	9278	8678	7705	6388	4868	3435	2404	1787	1456	1277	1164	1062	872	637	400	195	61
100%	99%	97%	94%	88%	78%	65%	49%	35%	24%	18%	15%	13%	12%	11%	9%	6%	4%	2%	1%

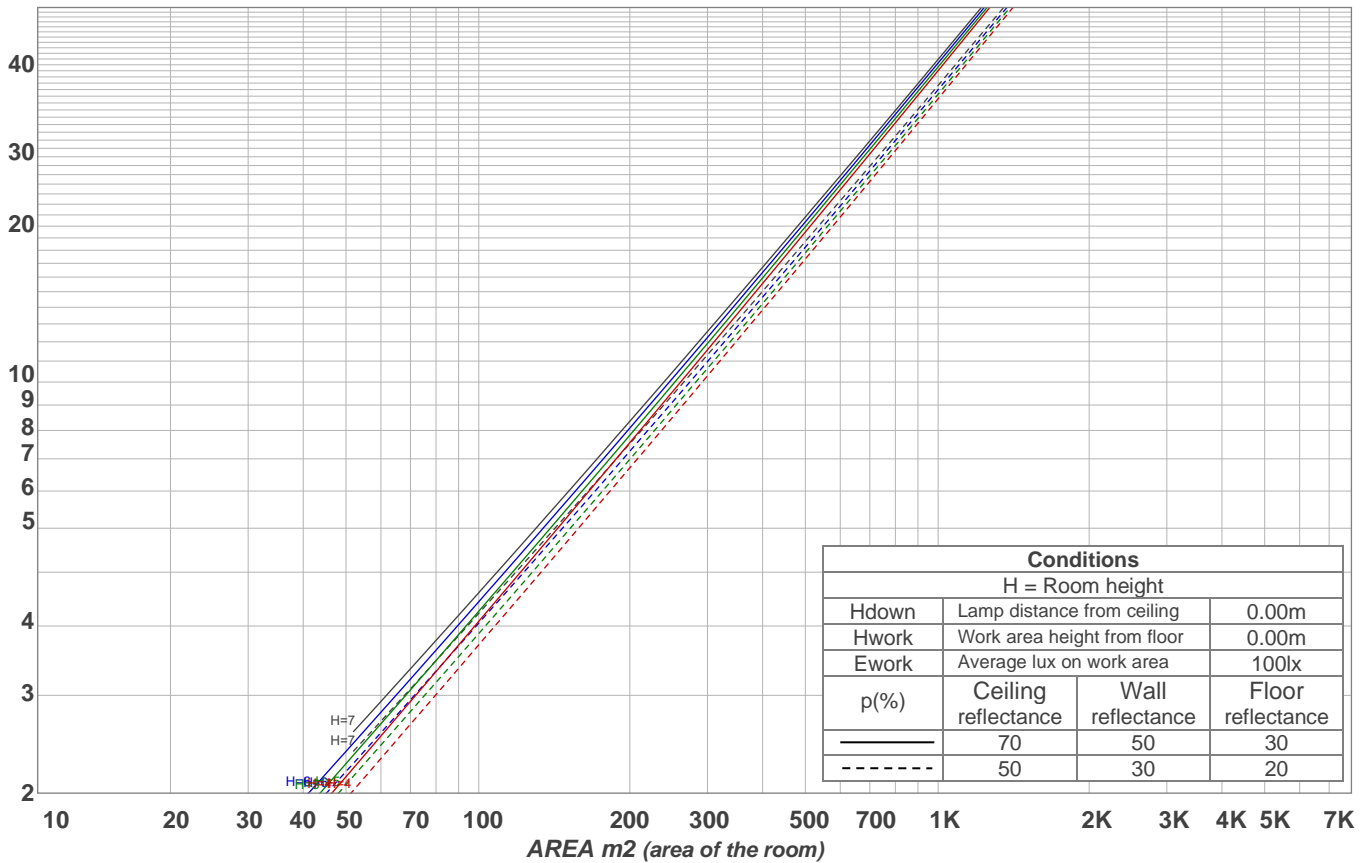
Intensities in 270° c-plane

0°	2°	4°	6°	8°	10°	12°	14°	16°	18°	20°	22°	24°	26°	28°	30°	32°	34°	36°	38°
9842	9777	9591	9278	8678	7705	6388	4868	3435	2404	1787	1456	1277	1164	1062	872	637	400	195	61
100%	99%	97%	94%	88%	78%	65%	49%	35%	24%	18%	15%	13%	12%	11%	9%	6%	4%	2%	1%

Beam angle 50%	Field angle 10%	Cutoff angle 2,5%	Intensity ratio in 120° cone	Intensity ratio in 90° cone
27.8°	57.2°	70.1°	99.4%	99.2%

LAMPS (number of lamps)
50

Light planning Luminaire budgetary diagram



Luminaire budgetary diagram AREA m2 (area of the room) Coefficients of Utilization

Ceiling reflectance	80				70				50			30			10			0			
Wall reflectance	70	50	30	10	70	50	30	10	50	30	10	50	30	10	50	30	10	50	30	10	0
Floor reflectance	20	20	20	20	20	20	20	20	20	20	20	20	20	20	20	20	20	20	20	20	0
RCR	(RCR: Room Cavity Ratio)																				
	Room Values are expressed as percentage of Lumens delivered to the task surface																				
0	119	119	119	119	116	116	116	116	111	111	111	106	106	106	102	102	102	100	100		
1	115	112	110	109	112	110	108	107	106	105	104	103	102	101	99	98	98	96	96		
2	111	107	104	101	109	105	102	100	102	100	98	99	97	96	96	95	94	92	92		
3	107	102	98	95	105	101	97	94	98	95	93	96	93	91	94	92	90	89	89		
4	103	98	93	90	102	96	93	90	94	91	89	93	90	88	91	89	87	85	85		
5	100	94	89	86	98	93	89	86	91	88	85	90	87	84	88	86	83	82	82		
6	97	90	86	82	95	89	85	82	88	84	82	87	84	81	86	83	81	79	79		
7	94	87	82	79	93	86	82	79	85	81	79	84	81	78	83	80	78	77	77		
8	91	84	79	76	90	83	79	76	82	79	76	81	78	76	81	78	75	74	74		
9	88	81	77	74	87	81	76	74	80	76	73	79	76	73	78	75	73	72	72		
10	86	78	74	71	85	78	74	71	77	74	71	77	73	71	76	73	71	70	70		

Zonal Lumen Summary

0°-10°	10°-20°	20°-30°	30°-40°	40°-50°	50°-60°	60°-70°	70°-80°	80°-90°
849 lm	1138 lm	560 lm	185 lm	5.04 lm	3.77 lm	3.94 lm	5.34 lm	6.95 lm
90°-100°	100°-110°	110°-120°	120°-130°	130°-140°	140°-150°	150°-160°	160°-170°	170°-180°
0.000 lm	0.000 lm	0.000 lm	0.000 lm	0.000 lm	0.000 lm	0.000 lm	0.000 lm	0.000 lm