

Light efficiency:



Output: 2719 lm

Light quality:

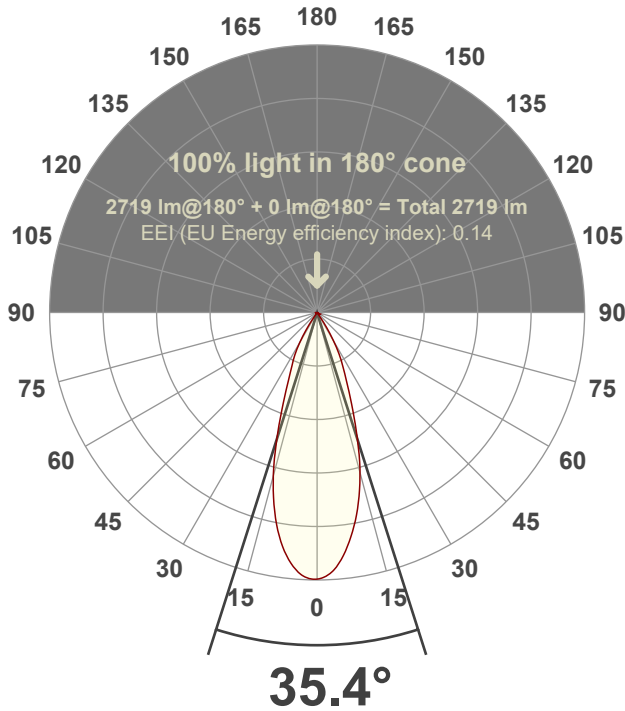


Peak: 6875 cd

Power: 28.5 W



Beam angle



Test number:

MSC-H-L-C24-30k-35°

Luminaire Model:

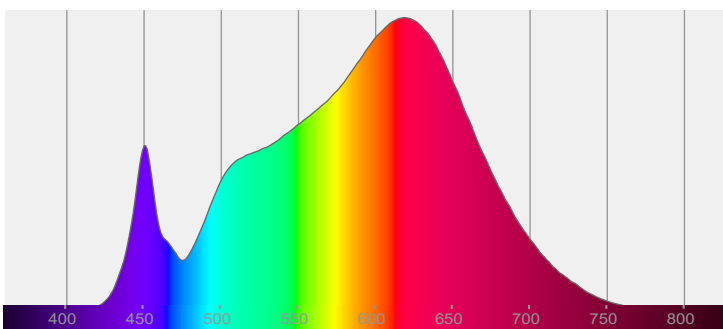
Mosaic Large Accent Head-C24-30k-35°

Date and time:

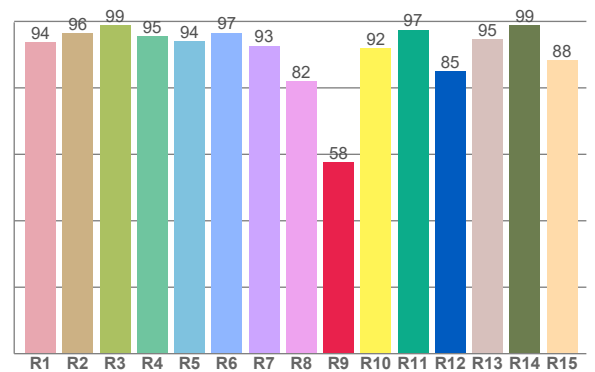
8/29/2022 3:02:00 PM

LUM: 2719

Spectra



CRI: 93.7 (R1-R8)



Color parameters

Color rendering index	Red component	Color fidelity	Color gamut	Color quality scale	Color coordinate cie 1931	Color coordinate cie 1931	Color coordinate	Color coordinate	Color deviation from black body
CRI	CRI R9	TM30 R <sub>f</sub>	TM30 R <sub>g</sub>	CQS	x	y	u	v	Δuv
93.7	57.6	93.1	99.5	92.2	0.432	0.405	0.247	0.347	0.0012

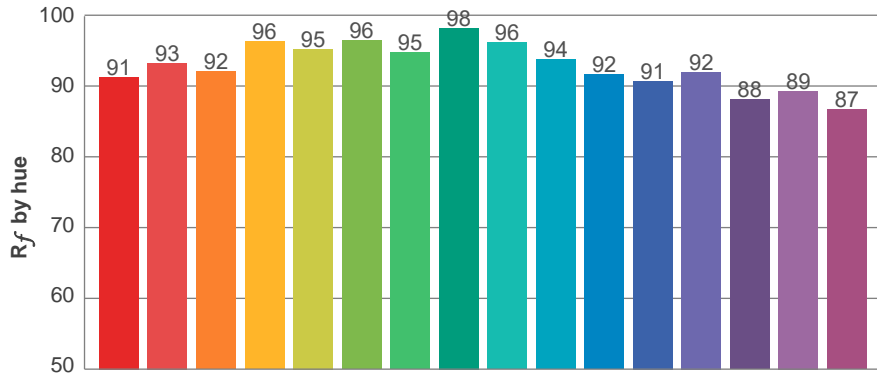
**$R_f$  93.1**

Fidelity index  $R_f$

**$R_g$  99.5**

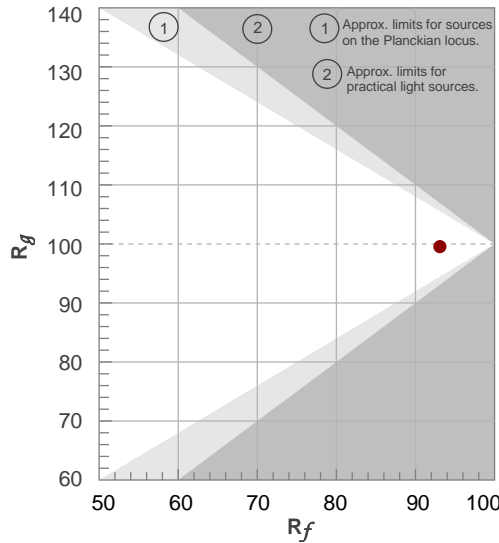
Gammut index  $R_g$

TM30: 93.1

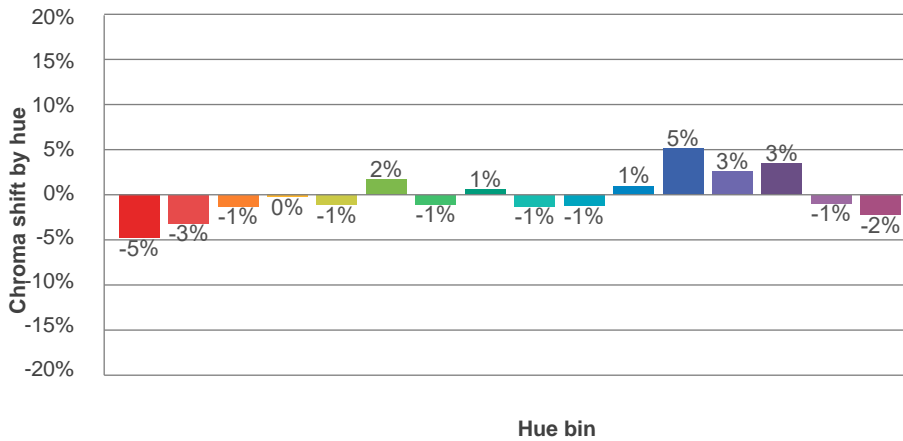
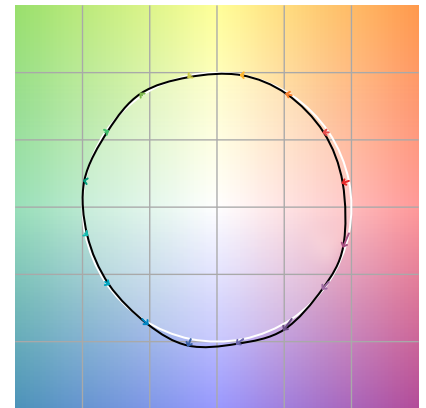


TM-30Color

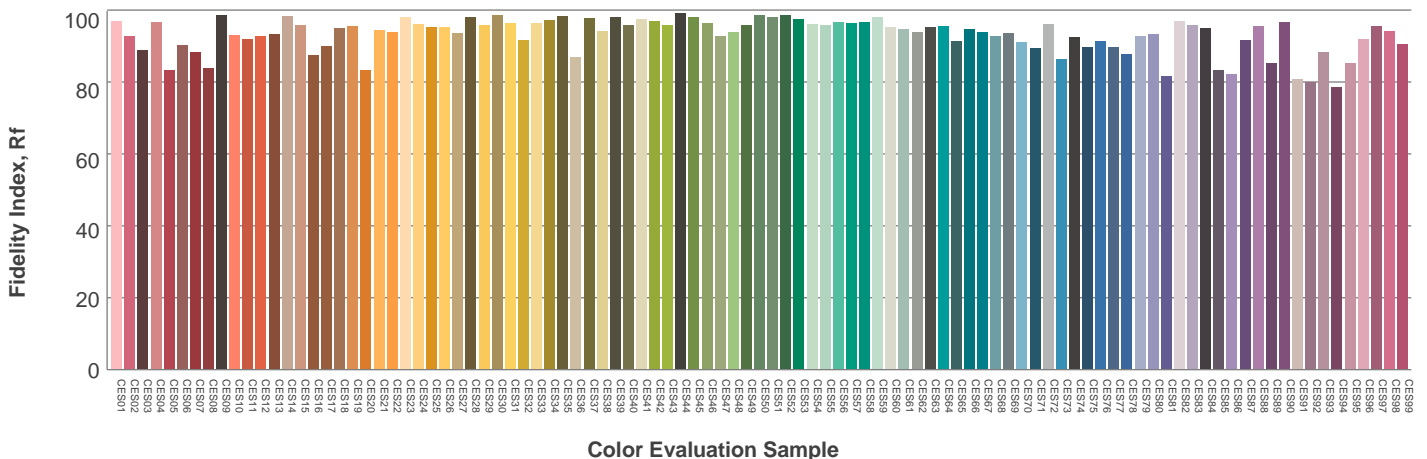
Hue Bin	$R_f$	Graphic shifts (%)	
		Chroma	Hue
1	91	-5%	-1%
2	93	-3%	2%
3	92	-1%	4%
4	96	0%	2%
5	95	-1%	2%
6	96	2%	0%
7	95	-1%	-2%
8	98	1%	0%
9	96	-1%	1%
10	94	-1%	3%
11	92	1%	5%
12	91	5%	-1%
13	92	3%	-5%
14	88	3%	-9%
15	89	-1%	-7%
16	87	-2%	-10%



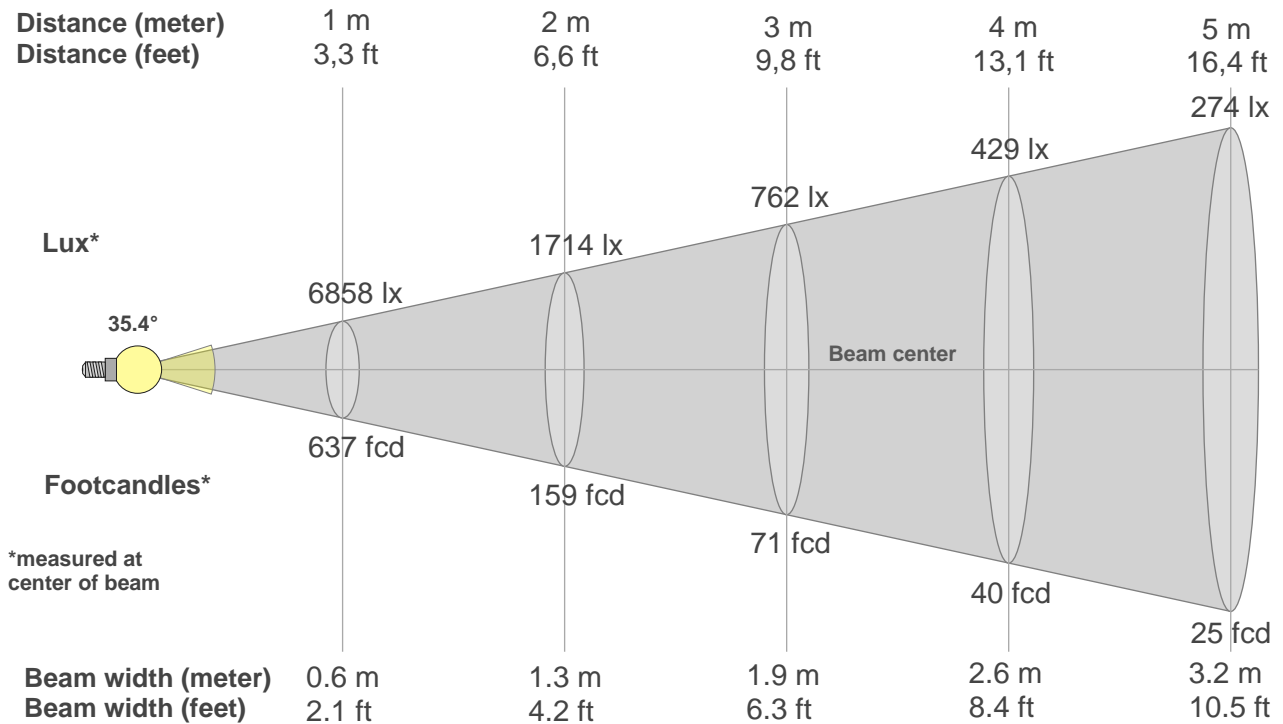
Color vector graphics



Color distortion



### Beam details



#### Beam intensities from 1-20m

1m	2m	3m	4m	5m	6m	7m	8m	9m	10m	11m	12m	13m	14m	15m	16m	17m	18m	19m	20m
3.3ft	6.6ft	9.8ft	13.1ft	16.4ft	19.7ft	23ft	26.2ft	29.5ft	32.8ft	36.1ft	39.4ft	42.7ft	45.9ft	49.2ft	52.5ft	55.8ft	59.1ft	62.3ft	65.6ft
6858lx	1714lx	762lx	429lx	274lx	190lx	140lx	107lx	85lx	69lx	57lx	48lx	41lx	35lx	30lx	27lx	24lx	21lx	19lx	17lx
637.1fcd	159.3fcd	70.8fcd	39.8fcd	25.5fcd	17.7fcd	13fcd	10fcd	7.9fcd	6.4fcd	5.3fcd	4.4fcd	3.8fcd	3.3fcd	2.8fcd	2.5fcd	2.2fcd	2fcd	1.8fcd	1.6fcd

#### Intensities in 0° c-plane

0°	2°	4°	6°	8°	10°	12°	14°	16°	18°	20°	22°	24°	26°	28°	30°	32°	34°	36°	38°
6858	6785	6617	6330	5959	5544	5077	4557	3989	3337	2740	2227	1814	1496	1223	906	604	339	140	29
100%	99%	96%	92%	87%	81%	74%	66%	58%	49%	40%	32%	26%	22%	18%	13%	9%	5%	2%	0%

#### Intensities in 90° c-plane

0°	2°	4°	6°	8°	10°	12°	14°	16°	18°	20°	22°	24°	26°	28°	30°	32°	34°	36°	38°
6858	6785	6617	6330	5959	5544	5077	4557	3989	3337	2740	2227	1814	1496	1223	906	604	339	140	29
100%	99%	96%	92%	87%	81%	74%	66%	58%	49%	40%	32%	26%	22%	18%	13%	9%	5%	2%	0%

#### Intensities in 180° c-plane

0°	2°	4°	6°	8°	10°	12°	14°	16°	18°	20°	22°	24°	26°	28°	30°	32°	34°	36°	38°
6858	6837	6719	6497	6167	5751	5252	4679	4040	3327	2678	2144	1741	1449	1219	937	645	377	167	38
100%	100%	98%	95%	90%	84%	77%	68%	59%	49%	39%	31%	25%	21%	18%	14%	9%	6%	2%	1%

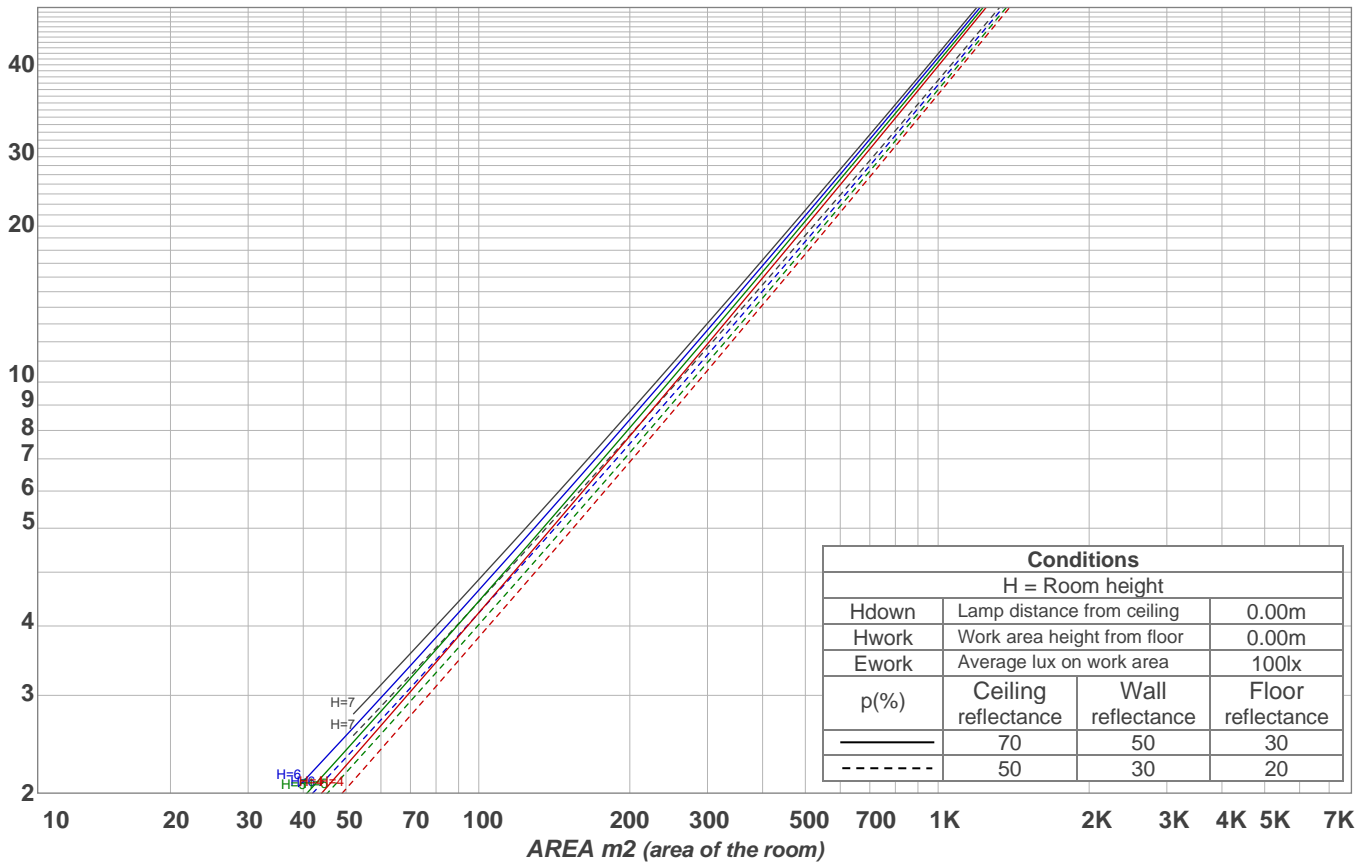
#### Intensities in 270° c-plane

0°	2°	4°	6°	8°	10°	12°	14°	16°	18°	20°	22°	24°	26°	28°	30°	32°	34°	36°	38°
6858	6837	6719	6497	6167	5751	5252	4679	4040	3327	2678	2144	1741	1449	1219	937	645	377	167	38
100%	100%	98%	95%	90%	84%	77%	68%	59%	49%	39%	31%	25%	21%	18%	14%	9%	6%	2%	1%

Beam angle 50%	Field angle 10%	Cutoff angle 2,5%	Intensity ratio in 120° cone	Intensity ratio in 90° cone
35.4°	63.1°	71.4°	99.6%	99.5%

LAMPS (number of lamps)  
50

## Light planning Luminaire budgetary diagram



### Luminaire budgetary diagram AREA m2 (area of the room) Coefficients of Utilization

Ceiling reflectance	80				70				50			30			10			0
Wall reflectance	70	50	30	10	70	50	30	10	50	30	10	50	30	10	50	30	10	0
Floor reflectance	20	20	20	20	20	20	20	20	20	20	20	20	20	20	20	20	20	0
RCR	(RCR: Room Cavity Ratio)																	
	Room Values are expressed as percentage of Lumens delivered to the task surface																	
0	119	119	119	119	116	116	116	116	111	111	111	106	106	106	102	102	102	100
1	114	112	110	108	112	110	108	106	106	104	103	102	101	100	99	98	97	95
2	110	106	103	100	108	104	101	99	101	99	97	98	96	95	96	94	93	91
3	106	101	97	93	104	99	96	93	97	94	91	95	92	90	92	90	89	87
4	102	96	92	88	100	95	91	88	93	89	87	91	88	86	89	87	85	83
5	98	92	87	84	97	91	86	83	89	85	82	88	84	82	86	83	81	80
6	95	88	83	80	94	87	83	79	86	82	79	84	81	78	83	80	78	77
7	91	84	79	76	90	83	79	76	82	78	75	81	78	75	80	77	75	73
8	88	81	76	73	87	80	76	73	79	75	72	78	75	72	77	74	72	71
9	85	78	73	70	84	77	73	70	76	72	69	76	72	69	75	71	69	68
10	82	75	70	67	82	74	70	67	74	70	67	73	69	67	72	69	66	65

### Zonal Lumen Summary

0°-10°	10°-20°	20°-30°	30°-40°	40°-50°	50°-60°	60°-70°	70°-80°	80°-90°
597 lm	1162 lm	754 lm	189 lm	3.91 lm	2.28 lm	2.11 lm	3.39 lm	4.83 lm
90°-100°	100°-110°	110°-120°	120°-130°	130°-140°	140°-150°	150°-160°	160°-170°	170°-180°
0.000 lm	0.000 lm	0.000 lm	0.000 lm	0.000 lm	0.000 lm	0.000 lm	0.000 lm	0.000 lm