

Light efficiency:



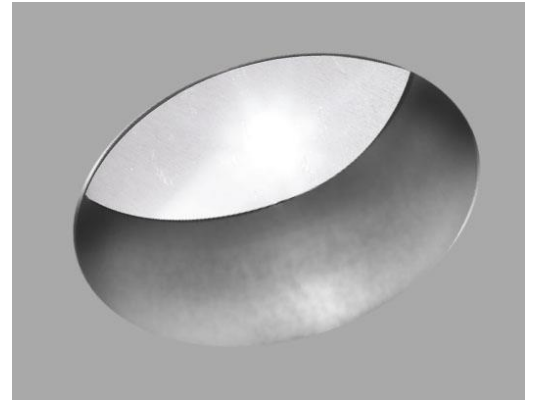
Output: 970 lm

Light quality:

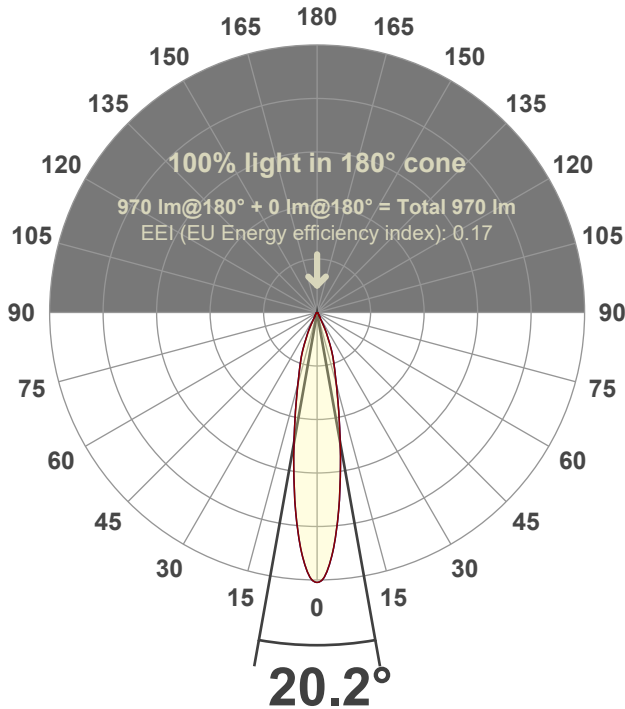


Peak: 4682 cd

Power: 12.6 W



Beam angle



Test number:

RV3D-RA-C11-30-20°-Rev2A

Luminaire Model:

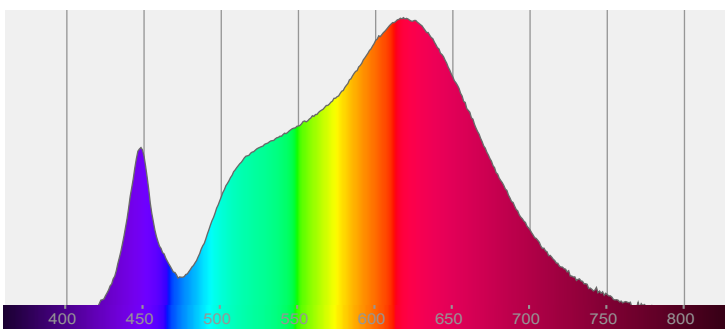
Rivet 3" Adjustable Round Downlight-C11-3000k-20°

Date and time:

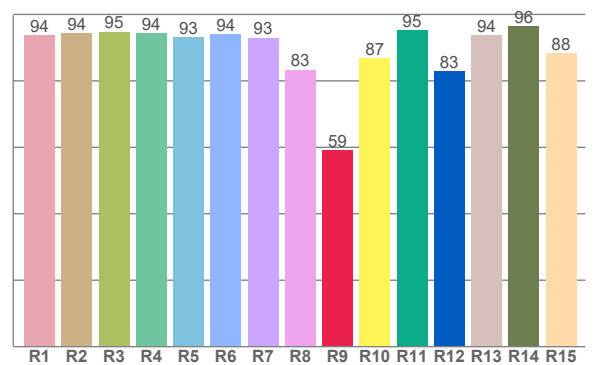
1/4/2023 10:04:13 AM

LUM: 970

Spectra



CRI: 92.6 (R1-R8)



Color parameters

	Color rendering index	Red component	Color fidelity	Color gamut	Color quality scale	Color coordinate cie 1931	Color coordinate cie 1931	Color coordinate	Color coordinate	Color deviation from black body
	CRI	CRI R9	TM30 R <sub>f</sub>	TM30 R <sub>g</sub>	CQS	x	y	u	v	Δuv
	92.6	59.1	91.0	102.1	90.6	0.436	0.406	0.249	0.348	0.0009

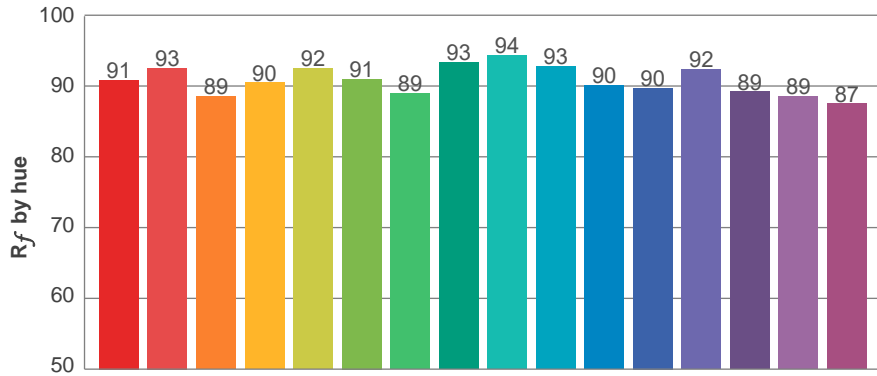
**$R_f$  91.0**  
Fidelity index  $R_f$

---

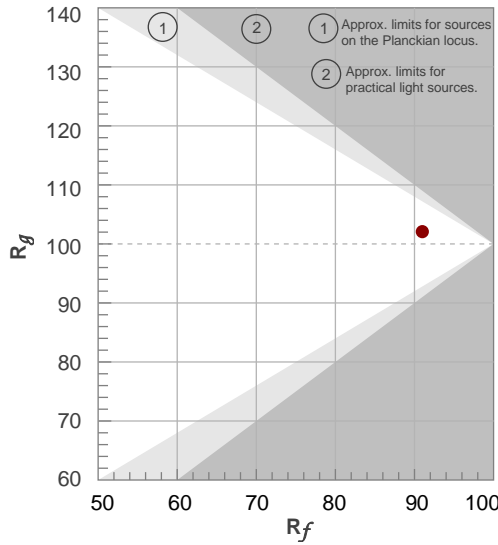
**$R_g$  102.1**  
Gammut index  $R_g$

TM30: 91.0

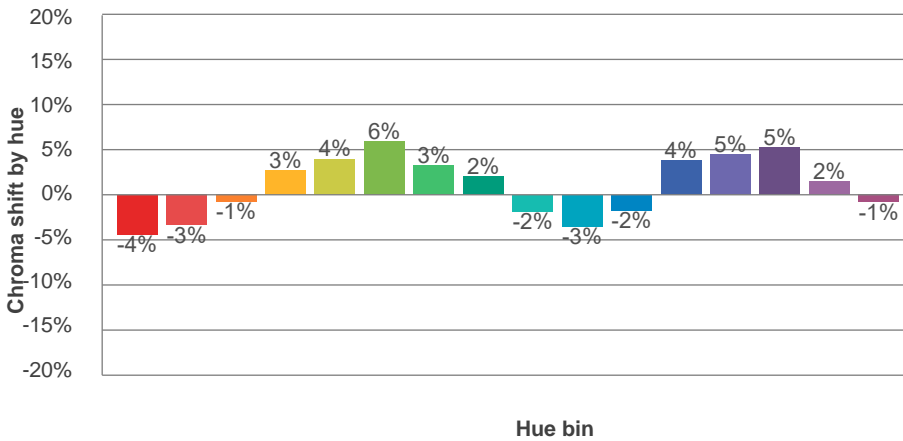
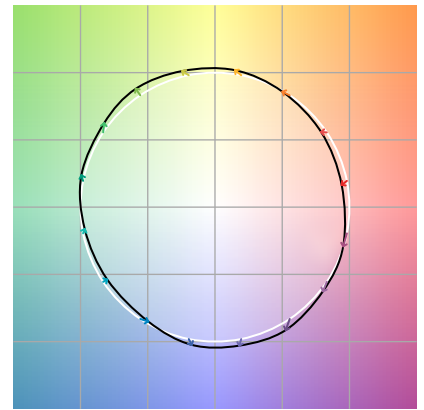
TM-30Color



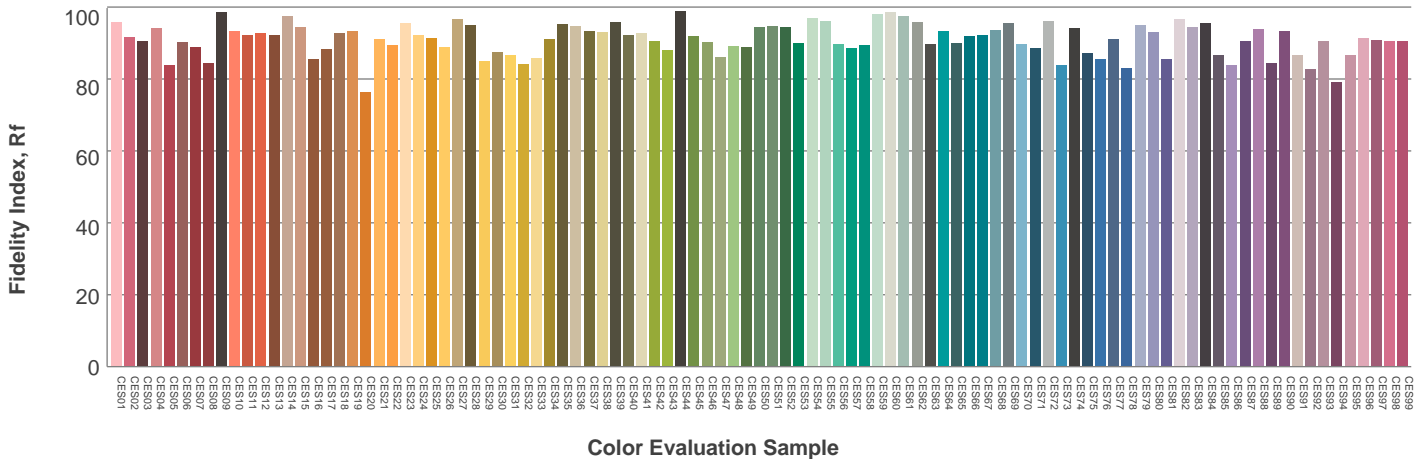
Hue Bin	$R_f$	Graphic shifts (%)	
		Chroma	Hue
1	91	-4%	-2%
2	93	-3%	3%
3	89	-1%	6%
4	90	3%	5%
5	92	4%	4%
6	91	6%	0%
7	89	3%	-6%
8	93	2%	-4%
9	94	-2%	-3%
10	93	-3%	0%
11	90	-2%	6%
12	90	4%	3%
13	92	5%	-2%
14	89	5%	-7%
15	89	2%	-7%
16	87	-1%	-10%



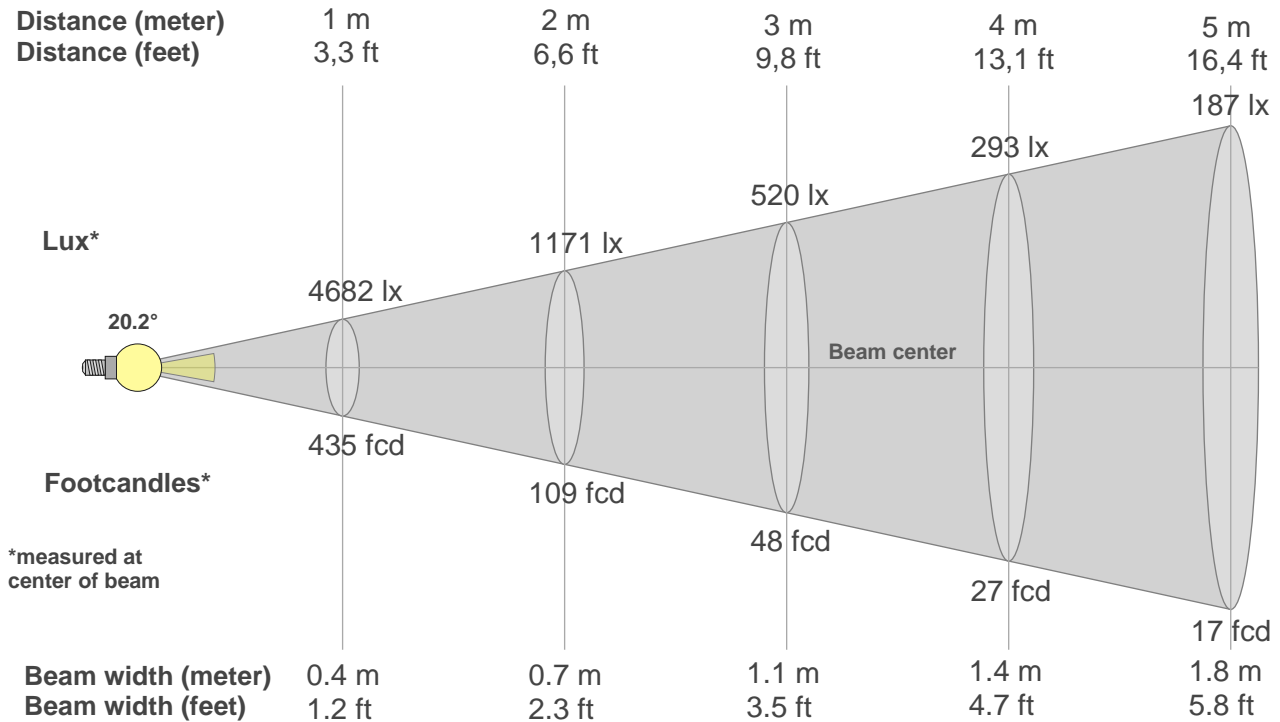
Color vector graphics



Color distortion



### Beam details



#### Beam intensities from 1-20m

1m	2m	3m	4m	5m	6m	7m	8m	9m	10m	11m	12m	13m	14m	15m	16m	17m	18m	19m	20m
3.3ft	6.6ft	9.8ft	13.1ft	16.4ft	19.7ft	23ft	26.2ft	29.5ft	32.8ft	36.1ft	39.4ft	42.7ft	45.9ft	49.2ft	52.5ft	55.8ft	59.1ft	62.3ft	65.6ft
4682lx	1171lx	520lx	293lx	187lx	130lx	96lx	73lx	58lx	47lx	39lx	33lx	28lx	24lx	21lx	18lx	16lx	14lx	13lx	12lx
435fcd	108.7fcd	48.3fcd	27.2fcd	17.4fcd	12.1fcd	8.9fcd	6.8fcd	5.4fcd	4.3fcd	3.6fcd	3fcd	2.6fcd	2.2fcd	1.9fcd	1.7fcd	1.5fcd	1.3fcd	1.2fcd	1.1fcd

#### Intensities in 0° c-plane

0°	2°	4°	6°	8°	10°	12°	14°	16°	18°	20°	22°	24°	26°	28°	30°	32°	34°	36°	38°
4682	4543	4139	3561	2939	2366	1874	1478	1179	977	797	615	443	315	179	109	83	79	75	68
100%	97%	88%	76%	63%	51%	40%	32%	25%	21%	17%	13%	9%	7%	4%	2%	2%	2%	2%	1%

#### Intensities in 90° c-plane

0°	2°	4°	6°	8°	10°	12°	14°	16°	18°	20°	22°	24°	26°	28°	30°	32°	34°	36°	38°
4682	4543	4139	3561	2939	2366	1874	1478	1179	977	797	615	443	315	179	109	83	79	75	68
100%	97%	88%	76%	63%	51%	40%	32%	25%	21%	17%	13%	9%	7%	4%	2%	2%	2%	2%	1%

#### Intensities in 180° c-plane

0°	2°	4°	6°	8°	10°	12°	14°	16°	18°	20°	22°	24°	26°	28°	30°	32°	34°	36°	38°
4682	4543	4139	3561	2939	2366	1874	1478	1179	977	797	615	443	315	179	109	83	79	75	68
100%	97%	88%	76%	63%	51%	40%	32%	25%	21%	17%	13%	9%	7%	4%	2%	2%	2%	2%	1%

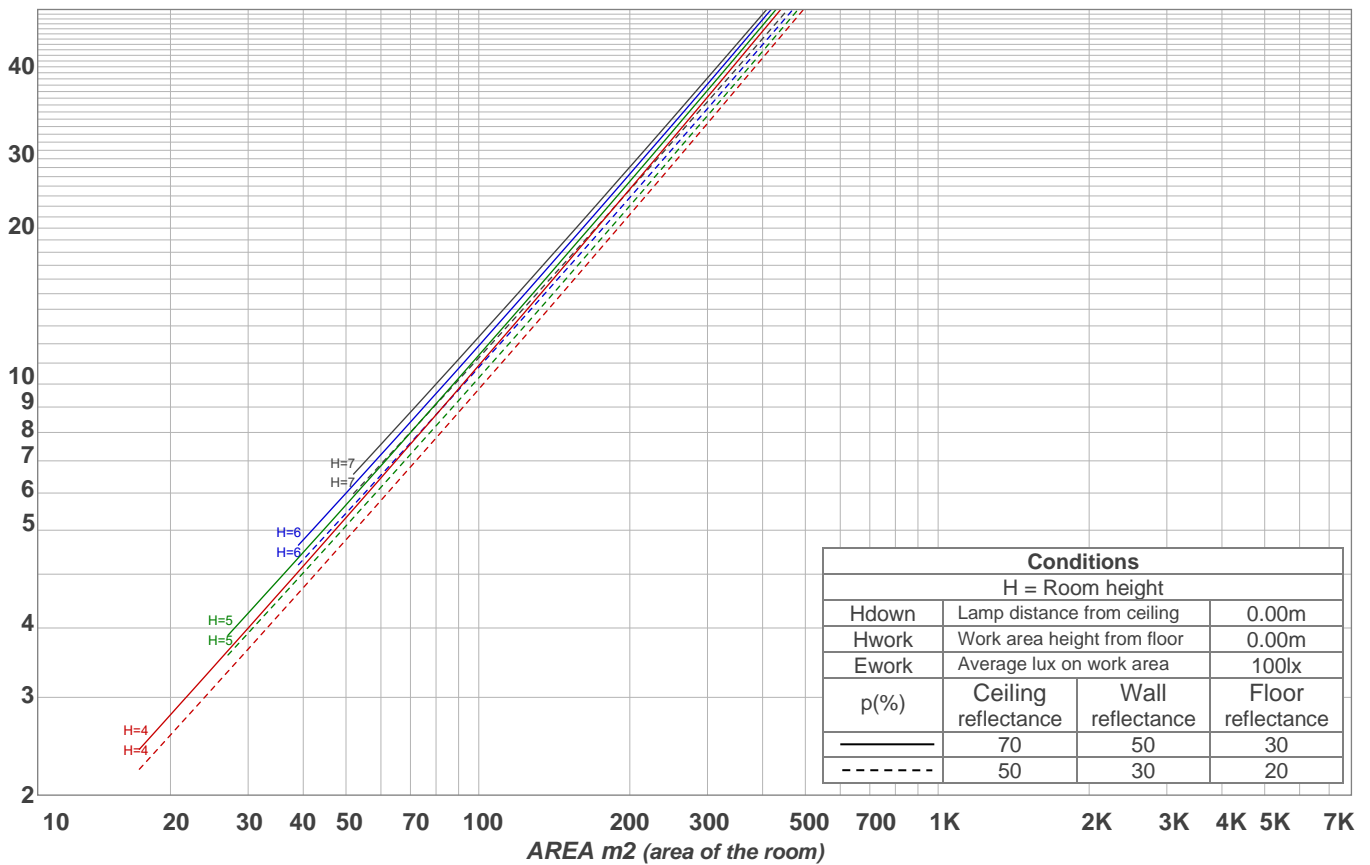
#### Intensities in 270° c-plane

0°	2°	4°	6°	8°	10°	12°	14°	16°	18°	20°	22°	24°	26°	28°	30°	32°	34°	36°	38°
4682	4543	4139	3561	2939	2366	1874	1478	1179	977	797	615	443	315	179	109	83	79	75	68
100%	97%	88%	76%	63%	51%	40%	32%	25%	21%	17%	13%	9%	7%	4%	2%	2%	2%	2%	1%

Beam angle 50%	Field angle 10%	Cutoff angle 2,5%	Intensity ratio in 120° cone	Intensity ratio in 90° cone
20.2°	47.2°	59.4°	98.6%	96.1%

LAMPS (number of lamps)  
50

### Light planning Luminaire budgetary diagram



### Luminaire budgetary diagram AREA m2 (area of the room) Coefficients of Utilization

Ceiling reflectance	80				70				50			30			10			0
Wall reflectance	70	50	30	10	70	50	30	10	50	30	10	50	30	10	50	30	10	0
Floor reflectance	20	20	20	20	20	20	20	20	20	20	20	20	20	20	20	20	20	0
RCR	(RCR: Room Cavity Ratio)																	
	Room Values are expressed as percentage of Lumens delivered to the task surface																	
0	119	119	119	119	116	116	116	116	111	111	111	106	106	106	102	102	102	100
1	115	112	110	108	112	110	108	106	106	105	103	102	101	100	99	98	97	96
2	110	106	103	100	108	105	102	99	101	99	97	99	97	95	96	94	93	91
3	106	101	97	94	104	100	96	93	97	94	92	95	92	90	93	91	89	88
4	103	97	92	89	101	96	92	88	94	90	87	92	89	86	90	88	86	84
5	99	93	88	85	98	92	88	84	90	86	84	89	85	83	87	84	82	81
6	96	89	84	81	95	88	84	81	87	83	80	86	82	80	85	82	79	78
7	93	86	81	78	92	85	81	78	84	80	77	83	80	77	82	79	77	76
8	90	83	78	75	89	82	78	75	81	78	75	81	77	75	80	77	74	73
9	87	80	76	73	87	80	76	73	79	75	72	78	75	72	77	74	72	71
10	85	78	73	71	84	77	73	70	77	73	70	76	73	70	75	72	70	69

### Zonal Lumen Summary

0°-10°	10°-20°	20°-30°	30°-40°	40°-50°	50°-60°	60°-70°	70°-80°	80°-90°
320 lm	374 lm	173 lm	47.2 lm	29.2 lm	13.4 lm	6.77 lm	3.81 lm	2.55 lm
90°-100°	100°-110°	110°-120°	120°-130°	130°-140°	140°-150°	150°-160°	160°-170°	170°-180°
0.000 lm	0.000 lm	0.000 lm	0.000 lm	0.000 lm	0.000 lm	0.000 lm	0.000 lm	0.000 lm