

Light efficiency:



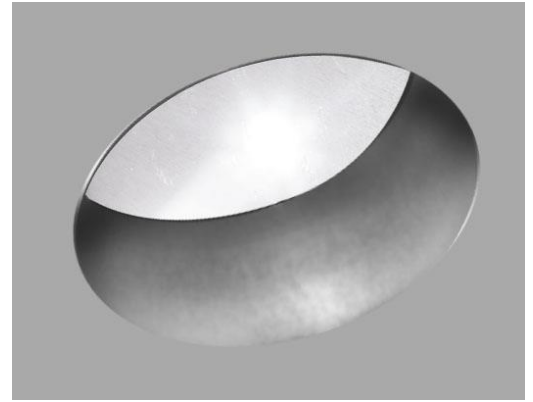
Output: 874 lm

Light quality:

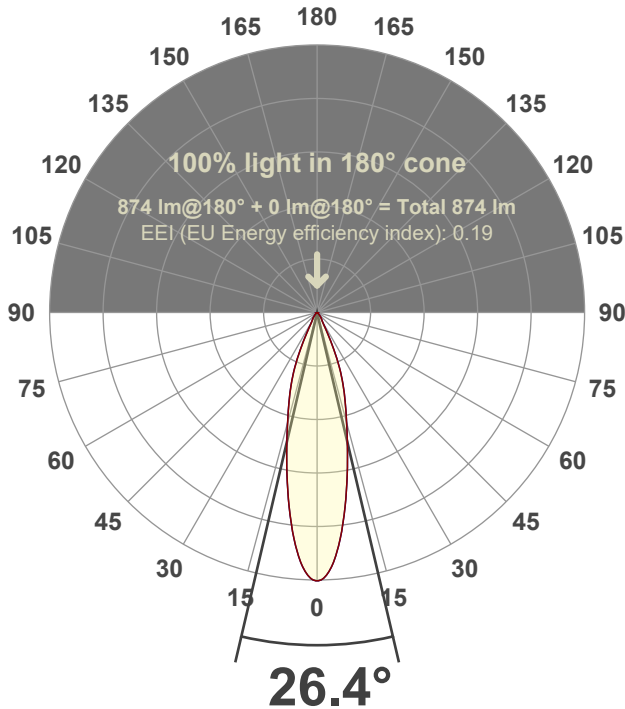


Peak: 2879 cd

Power: 12.6 W



Beam angle



Test number:

RV3D-RA-C11-30-28°-Rev2A

Luminaire Model:

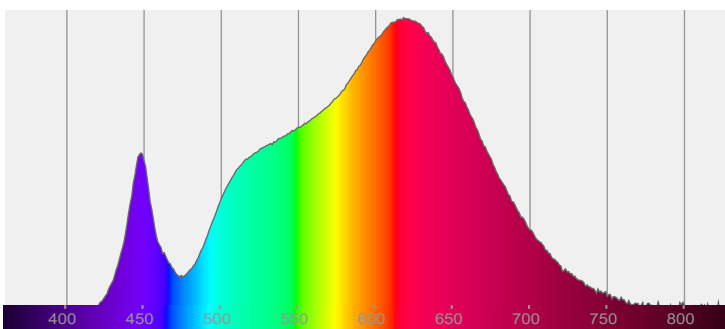
Rivet 3" Adjustable Round Downlight-C11-3000k-28°

Date and time:

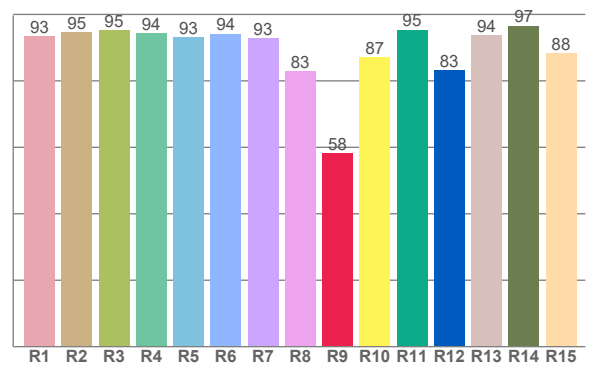
1/4/2023 10:22:59 AM

LUM: 874

Spectra



CRI: 92.5 (R1-R8)



Color parameters

	Color rendering index	Red component	Color fidelity	Color gamut	Color quality scale	Color coordinate cie 1931	Color coordinate cie 1931	Color coordinate	Color coordinate	Color deviation from black body
	CRI	CRI R9	TM30 R <sub>f</sub>	TM30 R <sub>g</sub>	CQS	x	y	u	v	Δuv
	92.5	58.2	91.0	101.9	90.5	0.437	0.406	0.250	0.348	0.0007

# R<sub>f</sub> 91.0

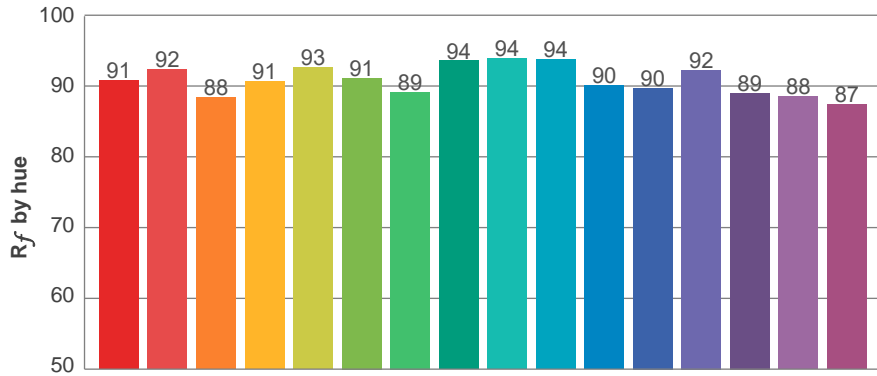
Fidelity index R<sub>f</sub>

---

# R<sub>g</sub> 101.9

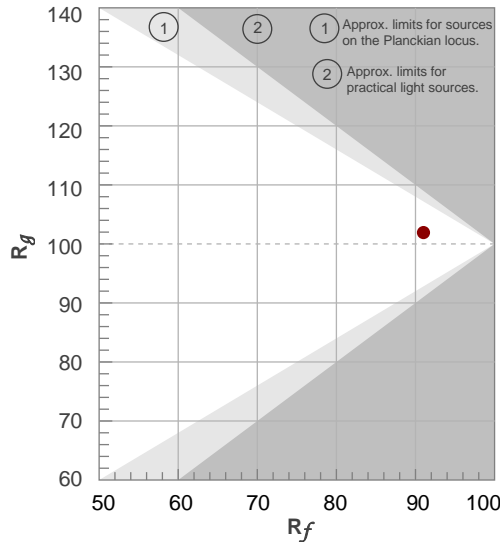
Gammut index R<sub>g</sub>

TM30: 91.0

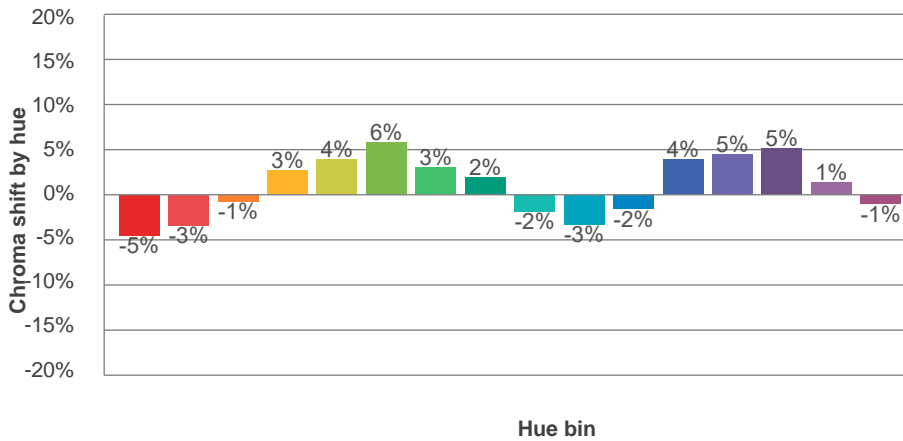
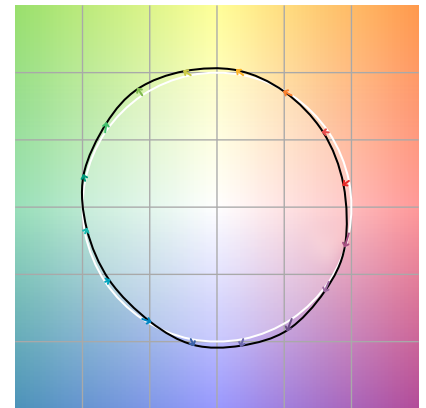


TM-30Color

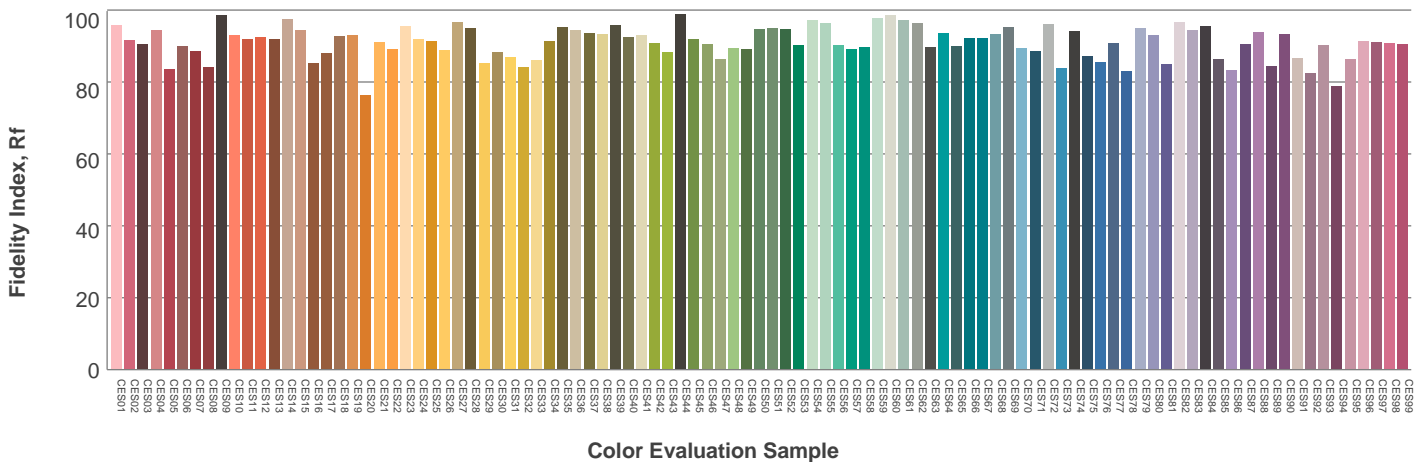
Hue Bin	R <sub>f</sub>	Graphic shifts (%)	
		Chroma	Hue
1	91	-5%	-2%
2	92	-3%	3%
3	88	-1%	6%
4	91	3%	5%
5	93	4%	4%
6	91	6%	0%
7	89	3%	-6%
8	94	2%	-4%
9	94	-2%	-3%
10	94	-3%	1%
11	90	-2%	6%
12	90	4%	3%
13	92	5%	-3%
14	89	5%	-7%
15	88	1%	-7%
16	87	-1%	-10%



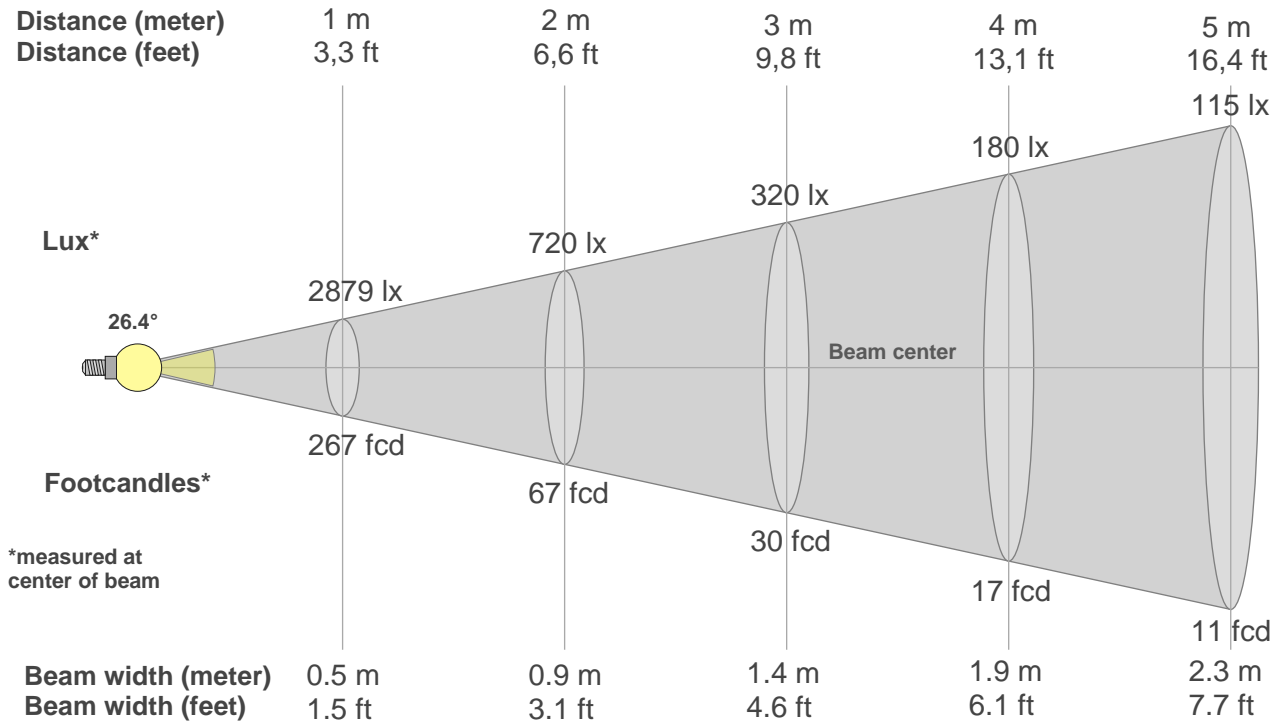
Color vector graphics



Color distortion



### Beam details



#### Beam intensities from 1-20m

1m	2m	3m	4m	5m	6m	7m	8m	9m	10m	11m	12m	13m	14m	15m	16m	17m	18m	19m	20m
3.3ft	6.6ft	9.8ft	13.1ft	16.4ft	19.7ft	23ft	26.2ft	29.5ft	32.8ft	36.1ft	39.4ft	42.7ft	45.9ft	49.2ft	52.5ft	55.8ft	59.1ft	62.3ft	65.6ft
2879lx	720lx	320lx	180lx	115lx	80lx	59lx	45lx	36lx	29lx	24lx	20lx	17lx	15lx	13lx	11lx	10lx	9lx	8lx	7lx
267.5fcd	66.9fcd	29.7fcd	16.7fcd	10.7fcd	7.4fcd	5.5fcd	4.2fcd	3.3fcd	2.7fcd	2.2fcd	1.9fcd	1.6fcd	1.4fcd	1.2fcd	1fcd	0.9fcd	0.8fcd	0.7fcd	0.7fcd

#### Intensities in 0° c-plane

0°	2°	4°	6°	8°	10°	12°	14°	16°	18°	20°	22°	24°	26°	28°	30°	32°	34°	36°	38°
2879	2825	2670	2434	2149	1860	1589	1348	1144	972	816	658	484	325	206	136	106	91	81	71
100%	98%	93%	85%	75%	65%	55%	47%	40%	34%	28%	23%	17%	11%	7%	5%	4%	3%	3%	2%

#### Intensities in 90° c-plane

0°	2°	4°	6°	8°	10°	12°	14°	16°	18°	20°	22°	24°	26°	28°	30°	32°	34°	36°	38°
2879	2825	2670	2434	2149	1860	1589	1348	1144	972	816	658	484	325	206	136	106	91	81	71
100%	98%	93%	85%	75%	65%	55%	47%	40%	34%	28%	23%	17%	11%	7%	5%	4%	3%	3%	2%

#### Intensities in 180° c-plane

0°	2°	4°	6°	8°	10°	12°	14°	16°	18°	20°	22°	24°	26°	28°	30°	32°	34°	36°	38°
2879	2825	2670	2434	2149	1860	1589	1348	1144	972	816	658	484	325	206	136	106	91	81	71
100%	98%	93%	85%	75%	65%	55%	47%	40%	34%	28%	23%	17%	11%	7%	5%	4%	3%	3%	2%

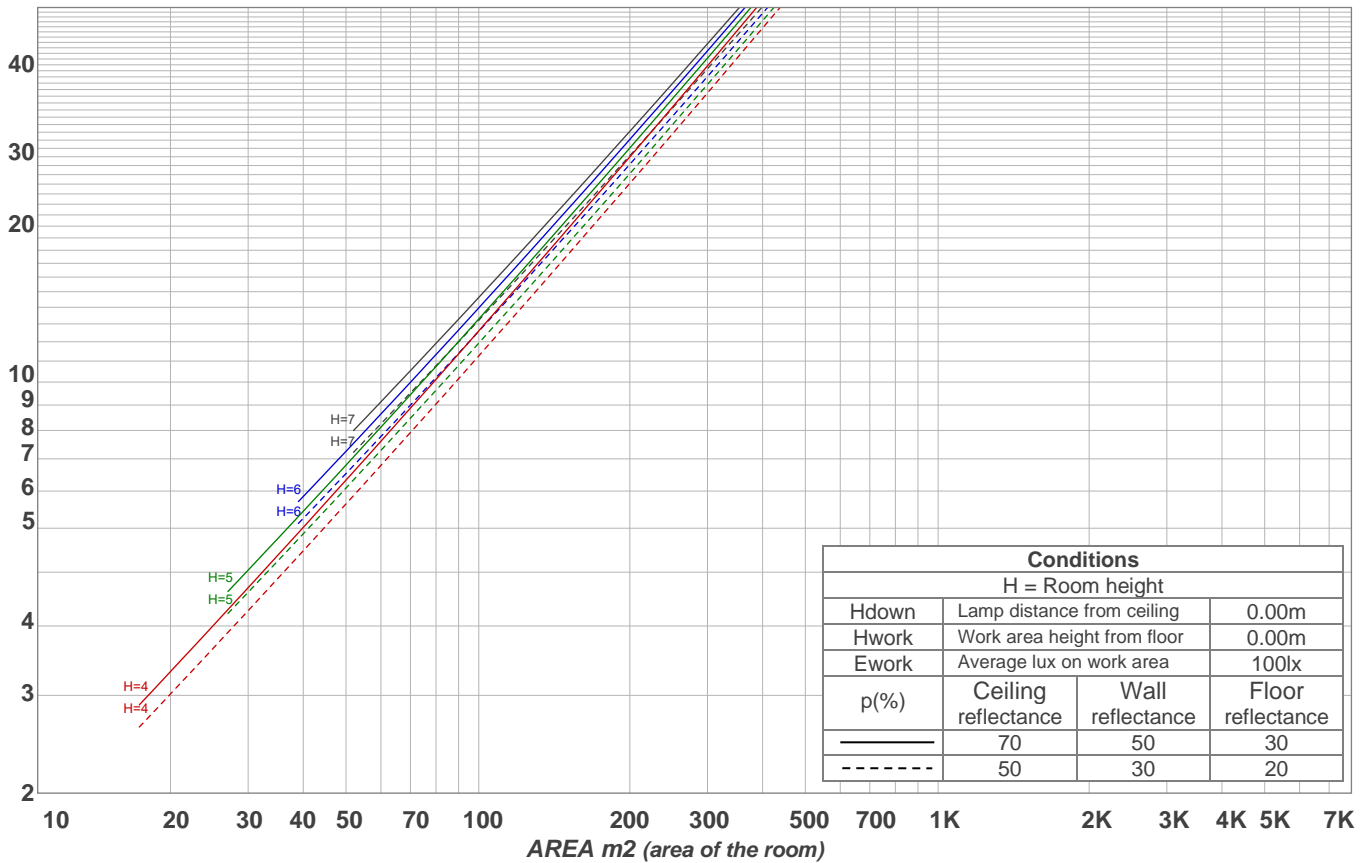
#### Intensities in 270° c-plane

0°	2°	4°	6°	8°	10°	12°	14°	16°	18°	20°	22°	24°	26°	28°	30°	32°	34°	36°	38°
2879	2825	2670	2434	2149	1860	1589	1348	1144	972	816	658	484	325	206	136	106	91	81	71
100%	98%	93%	85%	75%	65%	55%	47%	40%	34%	28%	23%	17%	11%	7%	5%	4%	3%	3%	2%

Beam angle 50%	Field angle 10%	Cutoff angle 2,5%	Intensity ratio in 120° cone	Intensity ratio in 90° cone
26.4°	53°	75.7°	97.9%	94.4%

LAMPS (number of lamps)  
50

### Light planning Luminaire budgetary diagram



### Luminaire budgetary diagram AREA m2 (area of the room) Coefficients of Utilization

Ceiling reflectance	80				70				50			30			10			0
Wall reflectance	70	50	30	10	70	50	30	10	50	30	10	50	30	10	50	30	10	0
Floor reflectance	20	20	20	20	20	20	20	20	20	20	20	20	20	20	20	20	20	0
RCR	(RCR: Room Cavity Ratio)																	
	Room Values are expressed as percentage of Lumens delivered to the task surface																	
0	119	119	119	119	116	116	116	116	111	111	111	106	106	106	102	102	102	100
1	114	112	109	107	112	109	107	106	105	104	102	102	100	99	98	97	96	95
2	109	105	101	98	107	103	100	97	100	98	95	97	95	93	95	93	91	90
3	105	99	95	92	103	98	94	91	95	92	89	93	90	88	91	89	87	85
4	101	94	90	86	99	93	89	86	91	88	85	89	86	84	88	85	83	81
5	97	90	85	81	96	89	84	81	87	83	80	86	82	80	84	81	79	78
6	93	86	81	77	92	85	81	77	84	80	77	83	79	76	81	78	76	74
7	90	82	77	74	89	82	77	74	81	76	73	80	76	73	78	75	73	71
8	87	79	74	71	86	79	74	71	78	73	70	77	73	70	76	72	70	69
9	84	76	71	68	83	76	71	68	75	71	68	74	70	68	73	70	67	66
10	81	73	69	66	81	73	69	65	72	68	65	72	68	65	71	68	65	64

### Zonal Lumen Summary

0°-10°	10°-20°	20°-30°	30°-40°	40°-50°	50°-60°	60°-70°	70°-80°	80°-90°
221 lm	345 lm	187 lm	55.0 lm	31.1 lm	17.1 lm	10.0 lm	5.22 lm	3.15 lm
90°-100°	100°-110°	110°-120°	120°-130°	130°-140°	140°-150°	150°-160°	160°-170°	170°-180°
0.000 lm	0.000 lm	0.000 lm	0.000 lm	0.000 lm	0.000 lm	0.000 lm	0.000 lm	0.000 lm