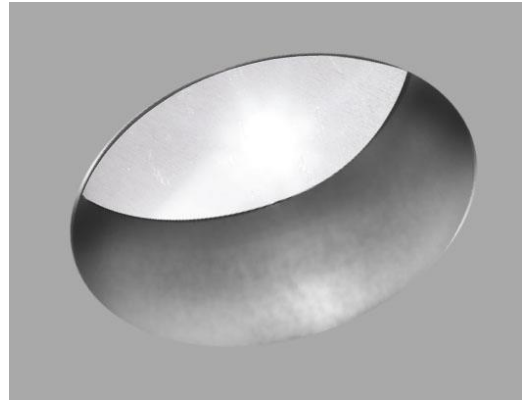


Light efficiency:



Output: 888 lm



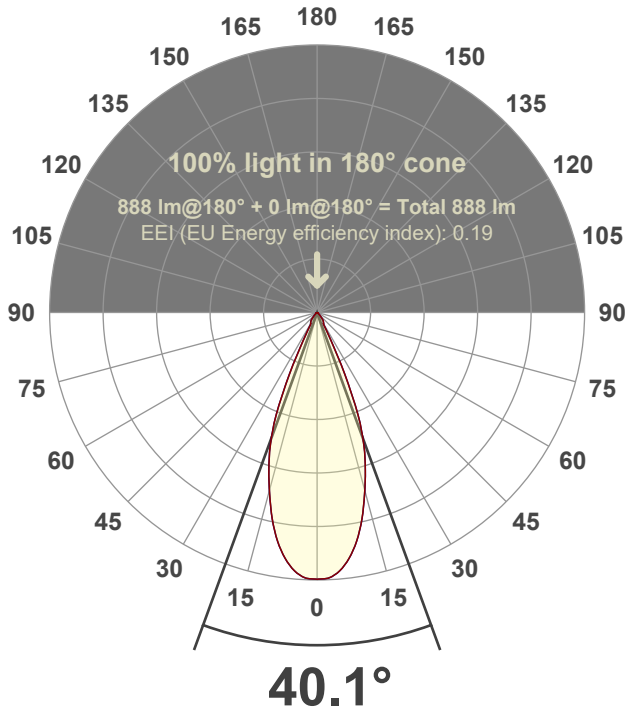
Light quality:



Peak: 2036 cd

Power: 12.6 W

Beam angle



Test number:

RV3D-RA-C11-30-40°-Rev2A

Luminaire Model:

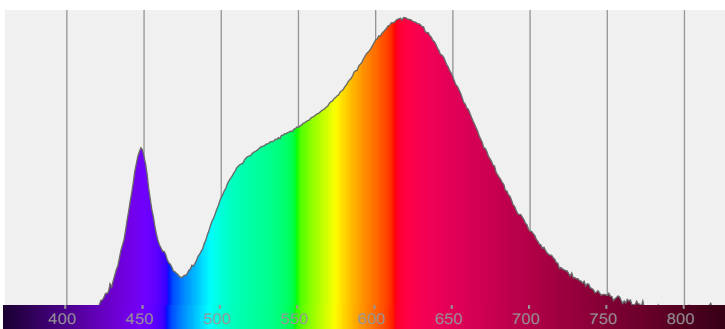
Rivet 3" Adjustable Round Downlight-C11-3000k-40°

Date and time:

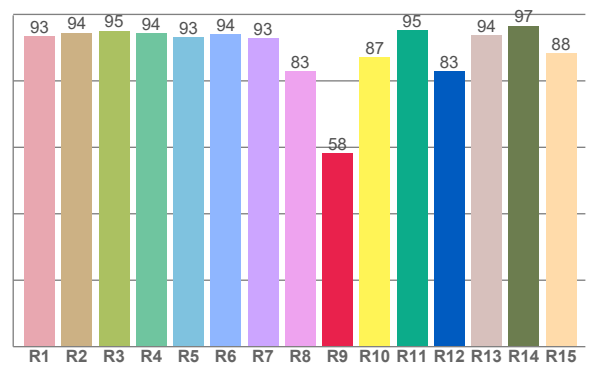
1/4/2023 10:51:49 AM

LUM: 888

Spectra



CRI: 92.5 (R1-R8)



Color parameters

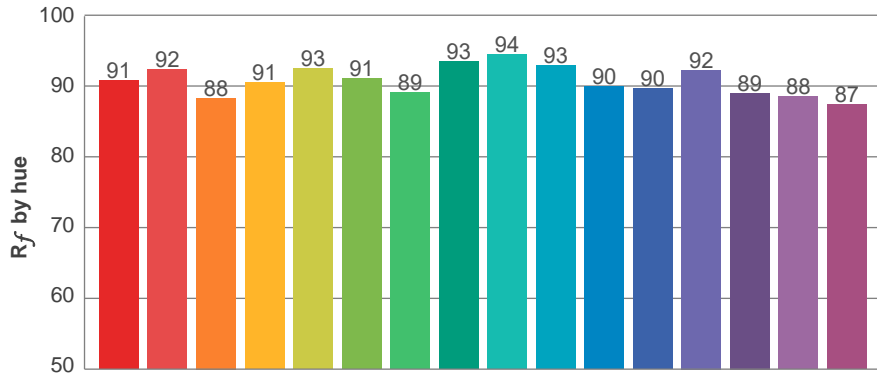
	Color rendering index	Red component	Color fidelity	Color gamut	Color quality scale	Color coordinate cie 1931	Color coordinate cie 1931	Color coordinate	Color coordinate	Color deviation from black body
	CRI	CRI R9	TM30 R _f	TM30 R _g	CQS	x	y	u	v	Δuv
	92.5	58.2	91.0	102.0	90.4	0.436	0.406	0.249	0.348	0.0007

R_f 91.0
Fidelity index R_f

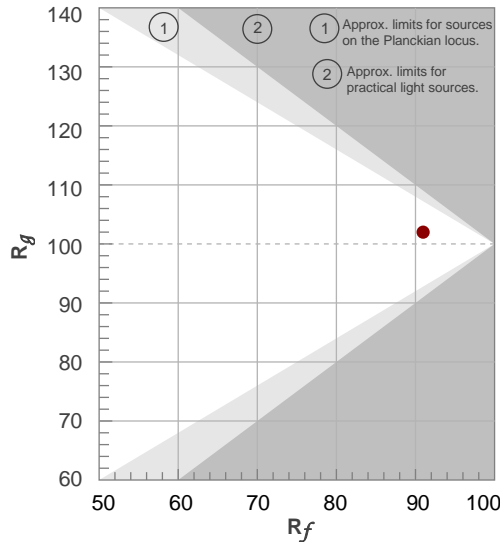
R_g 102.0
Gammut index R_g

TM30: 91.0

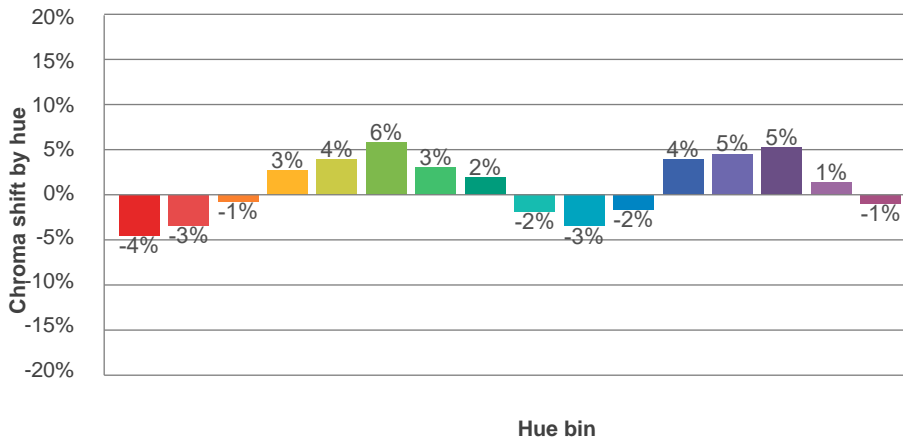
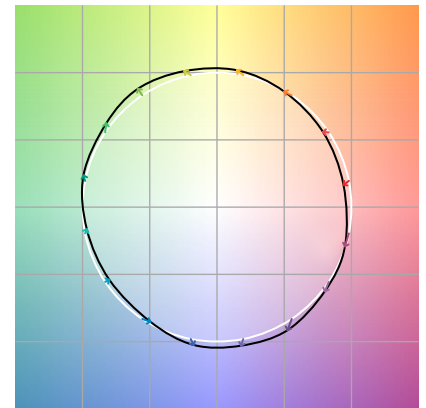
TM-30Color



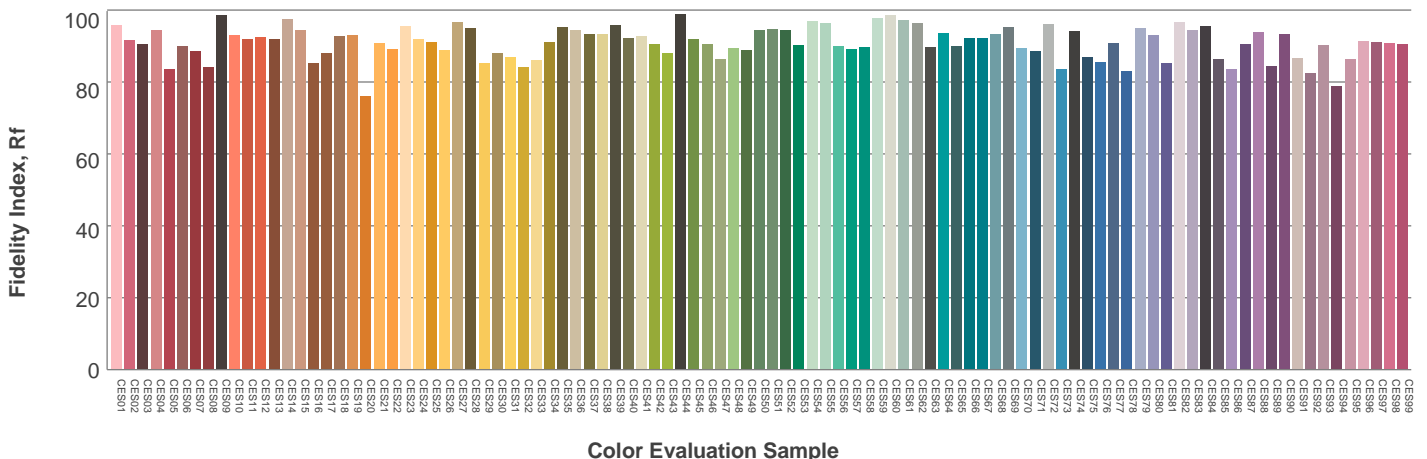
Hue Bin	R_f	Graphic shifts (%)	
		Chroma	Hue
1	91	-4%	-2%
2	92	-3%	3%
3	88	-1%	6%
4	91	3%	5%
5	93	4%	4%
6	91	6%	0%
7	89	3%	-6%
8	93	2%	-4%
9	94	-2%	-3%
10	93	-3%	1%
11	90	-2%	6%
12	90	4%	3%
13	92	5%	-3%
14	89	5%	-7%
15	88	1%	-7%
16	87	-1%	-10%



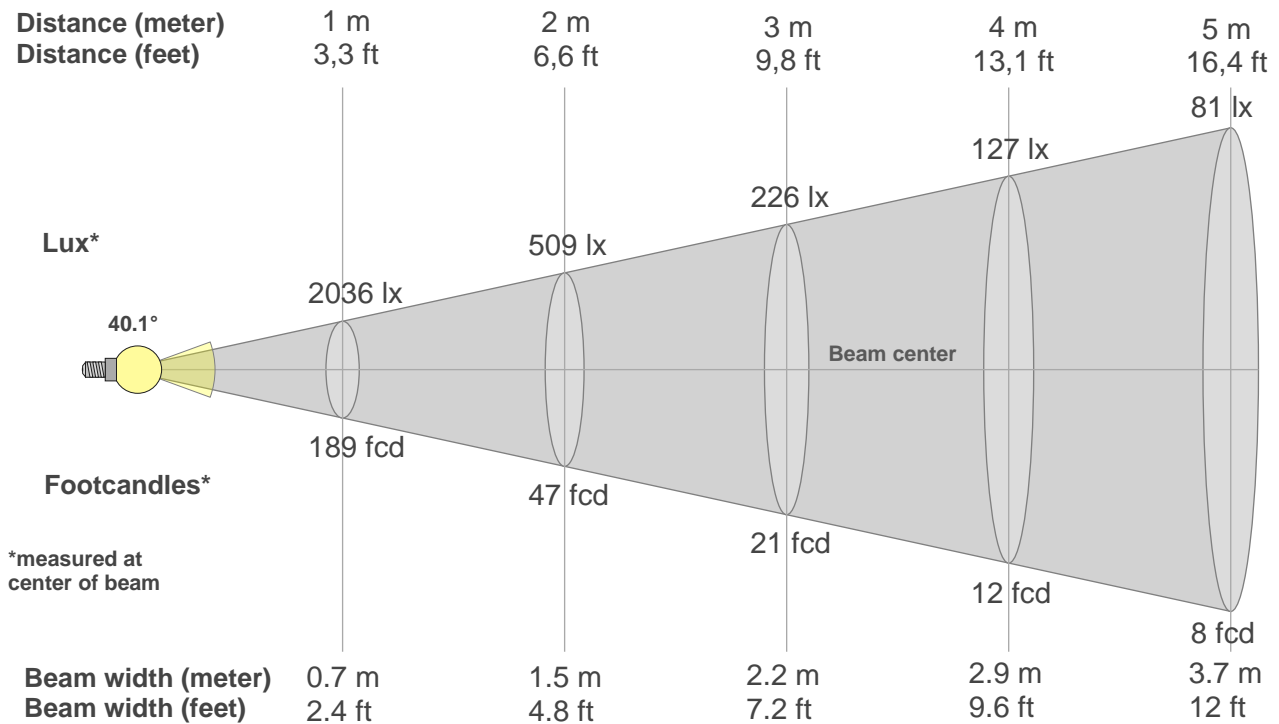
Color vector graphics



Color distortion



Beam details



*measured at center of beam

Beam intensities from 1-20m

1m	2m	3m	4m	5m	6m	7m	8m	9m	10m	11m	12m	13m	14m	15m	16m	17m	18m	19m	20m
3.3ft	6.6ft	9.8ft	13.1ft	16.4ft	19.7ft	23ft	26.2ft	29.5ft	32.8ft	36.1ft	39.4ft	42.7ft	45.9ft	49.2ft	52.5ft	55.8ft	59.1ft	62.3ft	65.6ft
2036lx	509lx	226lx	127lx	81lx	57lx	42lx	32lx	25lx	20lx	17lx	14lx	12lx	10lx	9lx	8lx	7lx	6lx	6lx	5lx
189.1fcd	47.3fcd	21fcd	11.8fcd	7.6fcd	5.3fcd	3.9fcd	3fcd	2.3fcd	1.9fcd	1.6fcd	1.3fcd	1.1fcd	1fcd	0.8fcd	0.7fcd	0.7fcd	0.6fcd	0.5fcd	0.5fcd

Intensities in 0° c-plane

0°	2°	4°	6°	8°	10°	12°	14°	16°	18°	20°	22°	24°	26°	28°	30°	32°	34°	36°	38°
2036	2030	2000	1945	1864	1761	1632	1485	1337	1187	1024	825	557	320	168	104	94	88	81	74
100%	100%	98%	96%	92%	87%	80%	73%	66%	58%	50%	41%	27%	16%	8%	5%	5%	4%	4%	4%

Intensities in 90° c-plane

0°	2°	4°	6°	8°	10°	12°	14°	16°	18°	20°	22°	24°	26°	28°	30°	32°	34°	36°	38°
2036	2030	2000	1945	1864	1761	1632	1485	1337	1187	1024	825	557	320	168	104	94	88	81	74
100%	100%	98%	96%	92%	87%	80%	73%	66%	58%	50%	41%	27%	16%	8%	5%	5%	4%	4%	4%

Intensities in 180° c-plane

0°	2°	4°	6°	8°	10°	12°	14°	16°	18°	20°	22°	24°	26°	28°	30°	32°	34°	36°	38°
2036	2030	2000	1945	1864	1761	1632	1485	1337	1187	1024	825	557	320	168	104	94	88	81	74
100%	100%	98%	96%	92%	87%	80%	73%	66%	58%	50%	41%	27%	16%	8%	5%	5%	4%	4%	4%

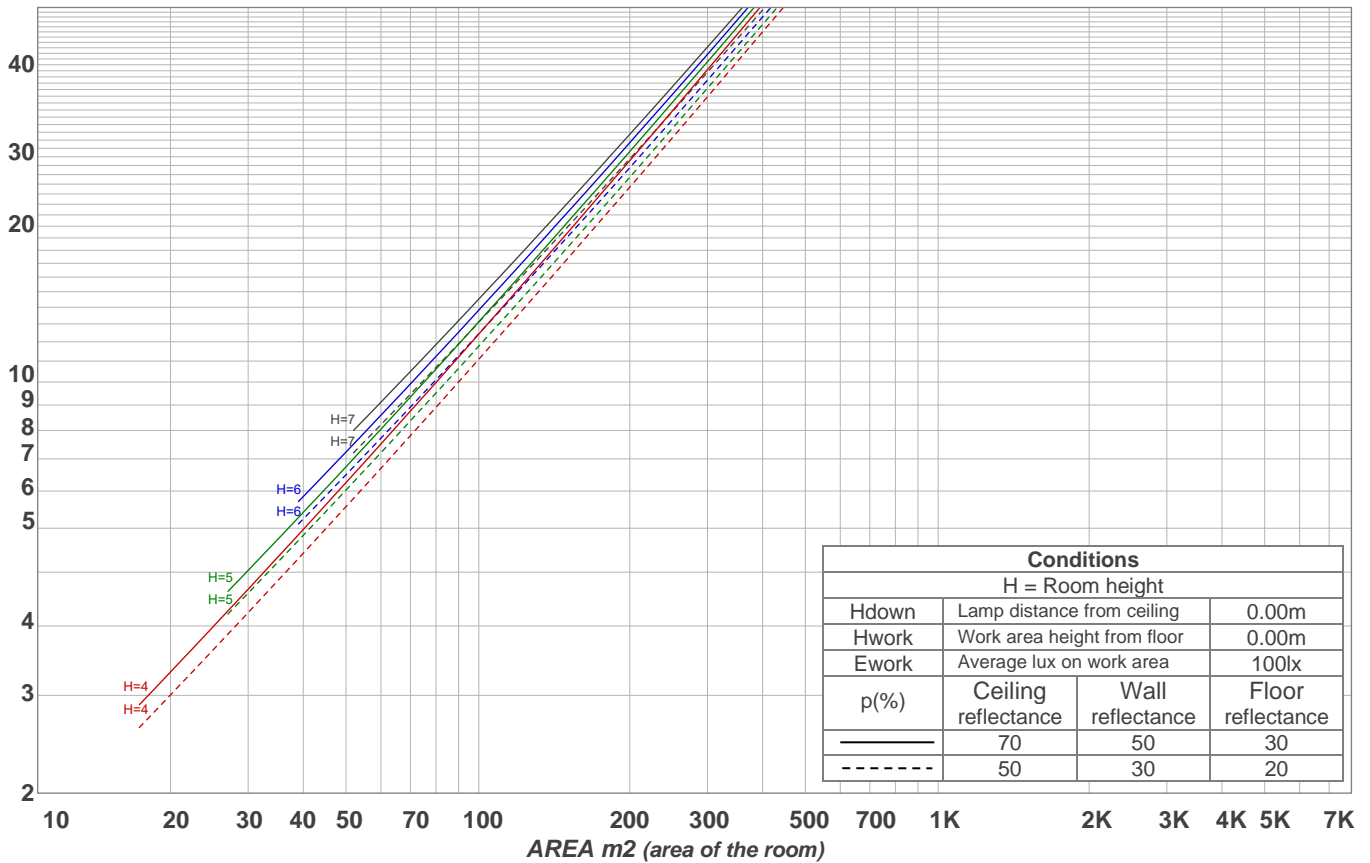
Intensities in 270° c-plane

0°	2°	4°	6°	8°	10°	12°	14°	16°	18°	20°	22°	24°	26°	28°	30°	32°	34°	36°	38°
2036	2030	2000	1945	1864	1761	1632	1485	1337	1187	1024	825	557	320	168	104	94	88	81	74
100%	100%	98%	96%	92%	87%	80%	73%	66%	58%	50%	41%	27%	16%	8%	5%	5%	4%	4%	4%

Beam angle 50%	Field angle 10%	Cutoff angle 2,5%	Intensity ratio in 120° cone	Intensity ratio in 90° cone
40.1°	54.7°	84.4°	98.4%	95.4%

LAMPS (number of lamps)
50

Light planning Luminaire budgetary diagram



Luminaire budgetary diagram AREA m2 (area of the room) Coefficients of Utilization

Ceiling reflectance	80				70				50			30			10			0	
Wall reflectance	70	50	30	10	70	50	30	10	50	30	10	50	30	10	50	30	10	0	
Floor reflectance	20	20	20	20	20	20	20	20	20	20	20	20	20	20	20	20	20	20	0
RCR	(RCR: Room Cavity Ratio)																		
	Room Values are expressed as percentage of Lumens delivered to the task surface																		
0	119	119	119	119	116	116	116	116	111	111	111	106	106	106	102	102	102	100	
1	114	112	109	107	112	109	107	106	105	104	102	102	100	99	98	97	96	95	
2	109	105	101	98	107	103	100	97	100	98	95	97	95	93	95	93	91	90	
3	105	99	95	92	103	98	94	91	95	92	89	93	90	88	91	89	87	85	
4	101	94	89	86	99	93	89	85	91	87	84	89	86	83	87	85	82	81	
5	97	90	85	81	95	89	84	81	87	83	80	86	82	79	84	81	79	77	
6	93	86	81	77	92	85	80	77	83	79	76	82	78	76	81	78	75	74	
7	90	82	77	73	88	81	76	73	80	76	73	79	75	72	78	75	72	71	
8	86	78	73	70	85	78	73	70	77	73	70	76	72	69	75	72	69	68	
9	83	75	70	67	82	75	70	67	74	70	67	73	69	67	72	69	66	65	
10	81	72	68	64	80	72	67	64	71	67	64	71	67	64	70	66	64	63	

Zonal Lumen Summary

0°-10°	10°-20°	20°-30°	30°-40°	40°-50°	50°-60°	60°-70°	70°-80°	80°-90°
182 lm	388 lm	207 lm	52.6 lm	30.5 lm	14.4 lm	7.56 lm	4.07 lm	2.37 lm
90°-100°	100°-110°	110°-120°	120°-130°	130°-140°	140°-150°	150°-160°	160°-170°	170°-180°
0.000 lm	0.000 lm	0.000 lm	0.000 lm	0.000 lm	0.000 lm	0.000 lm	0.000 lm	0.000 lm