

Light efficiency:



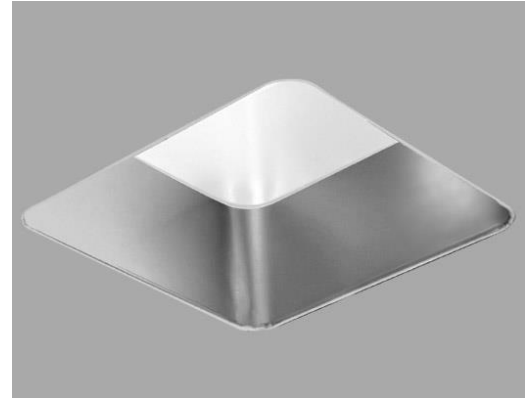
Output: 687 lm

Light quality:

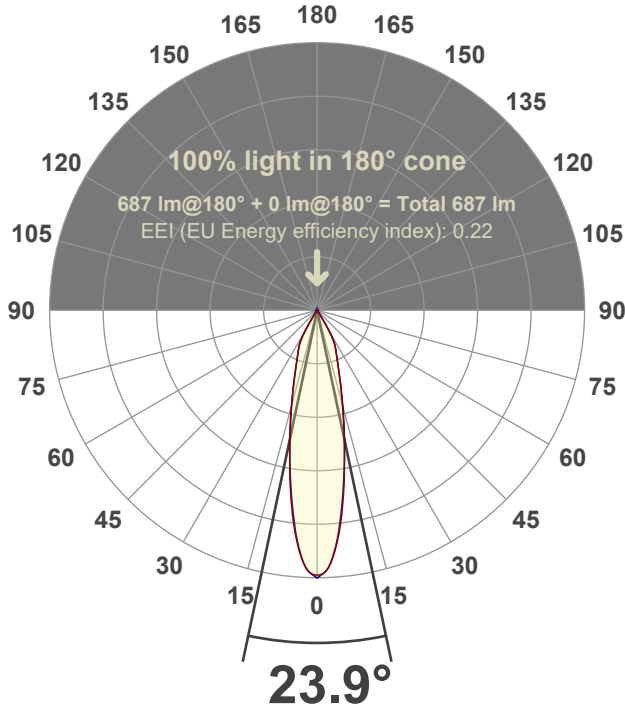


Peak: 2438 cd

Power: 12.1 W



Beam angle



Test number:

RV3D-SA-A11-AD3019-20°-Rev2A

Luminaire Model:

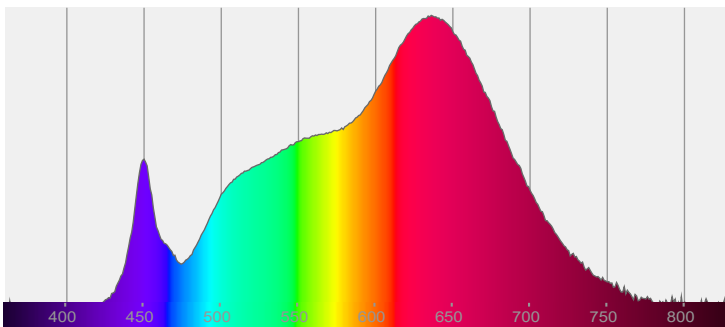
Rivet 3" Square Adjustable Downlight-A11-Ambient Dim 3000k to1900k-20°

Date and time:

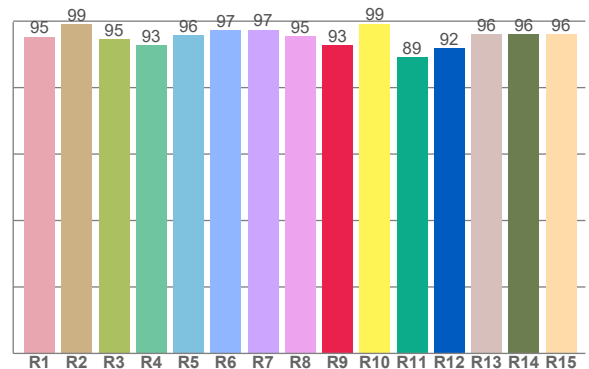
1/4/2023 5:35:11 PM

LUM: 687

Spectra



CRI: 95.9 (R1-R8)



Color parameters

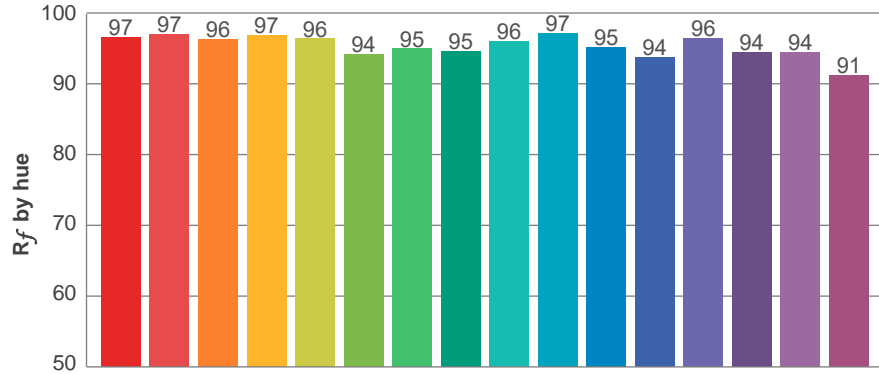
Color rendering index	Red component	Color fidelity	Color gamut	Color quality scale	Color coordinate cie 1931	Color coordinate cie 1931	Color coordinate	Color coordinate	Color divition from black body
CRI	CRI R9	TM30 R _f	TM30 R _g	CQS	x	y	u	v	Δuv
95.9	92.8	95.6	103.9	95.4	0.436	0.401	0.251	0.347	-0.0010

R_f 95.6
Fidelity index R_f

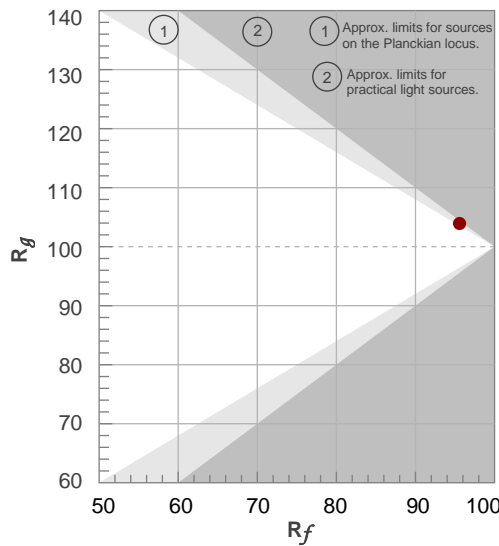
R_g 103.9
Gammut index R_g

TM30: 95.6

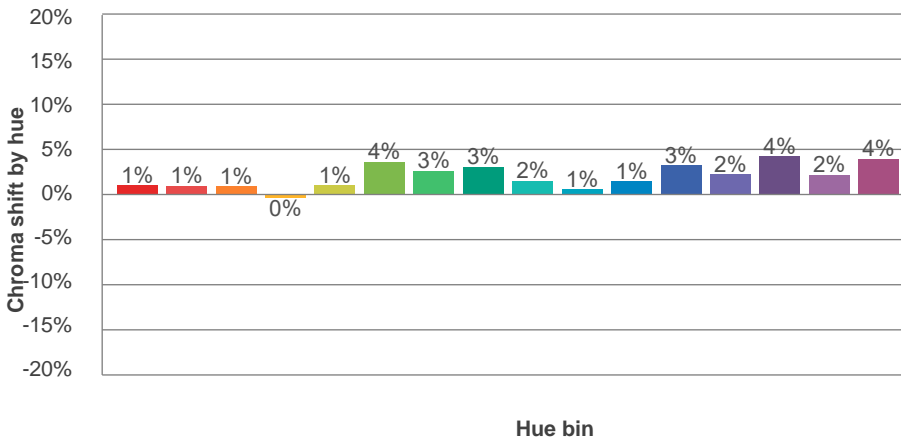
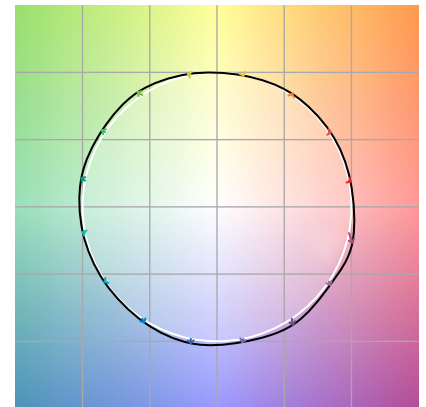
TM-30Color



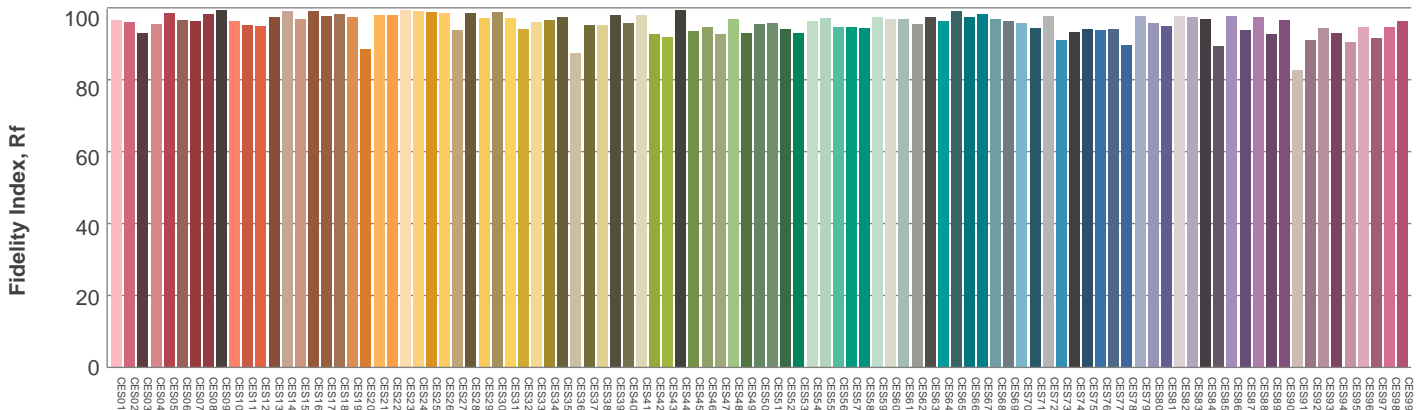
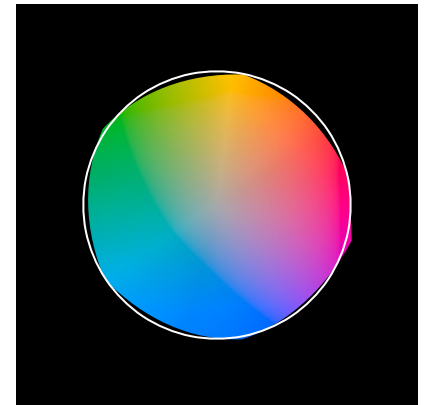
Hue Bin	R_f	Graphic shifts (%)	
		Chroma	Hue
1	97	1%	-1%
2	97	1%	-1%
3	96	1%	0%
4	97	0%	0%
5	96	1%	2%
6	94	4%	2%
7	95	3%	0%
8	95	3%	-1%
9	96	2%	-1%
10	97	1%	0%
11	95	1%	3%
12	94	3%	1%
13	96	2%	-1%
14	94	4%	-2%
15	94	2%	-1%
16	91	4%	-6%



Color vector graphics



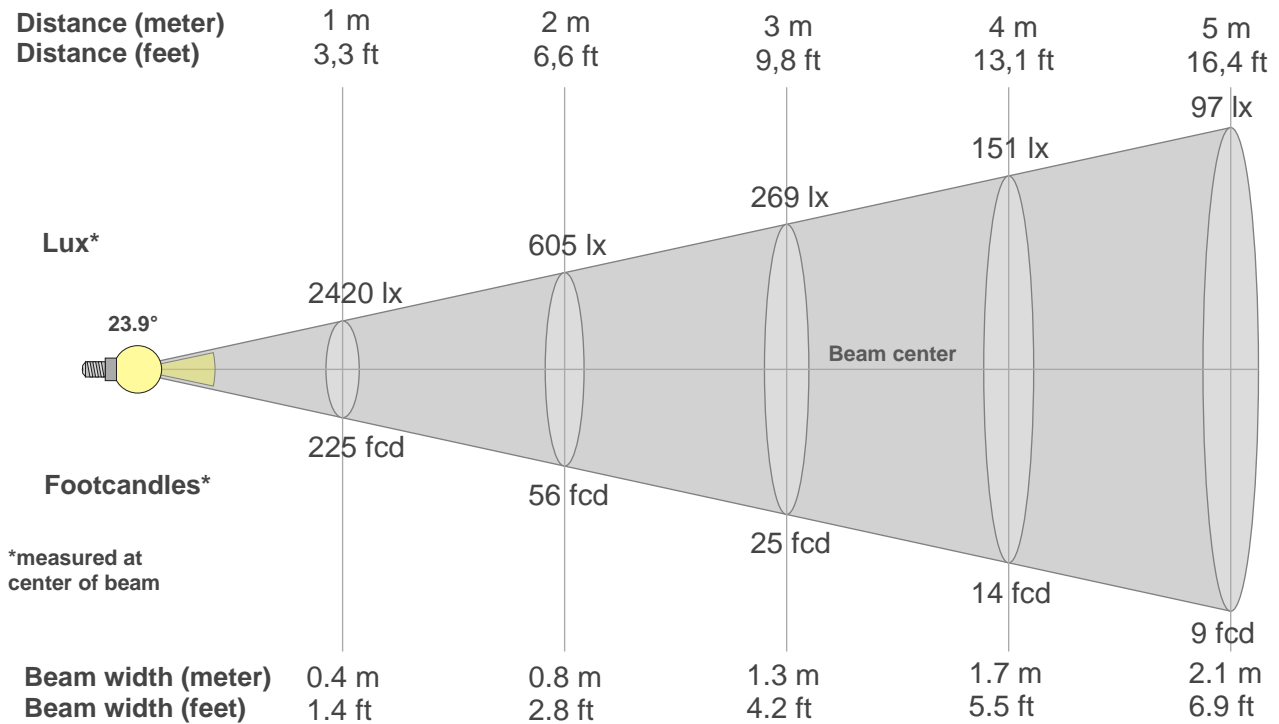
Color distortion



Color Evaluation Sample

www.specialtylightingindustries.com As a result of our continuous improvement, values are subject to change without notice. These are delivered results and can vary +/- 10% from published source data range.

Beam details



Beam intensities from 1-20m

1m	2m	3m	4m	5m	6m	7m	8m	9m	10m	11m	12m	13m	14m	15m	16m	17m	18m	19m	20m
3.3ft	6.6ft	9.8ft	13.1ft	16.4ft	19.7ft	23ft	26.2ft	29.5ft	32.8ft	36.1ft	39.4ft	42.7ft	45.9ft	49.2ft	52.5ft	55.8ft	59.1ft	62.3ft	65.6ft
2420lx	605lx	269lx	151lx	97lx	67lx	49lx	38lx	30lx	24lx	20lx	17lx	14lx	12lx	11lx	9lx	8lx	7lx	7lx	6lx
224.8fcd	56.2fcd	25fcd	14.1fcd	9fcd	6.2fcd	4.6fcd	3.5fcd	2.8fcd	2.2fcd	1.9fcd	1.6fcd	1.3fcd	1.1fcd	1fcd	0.9fcd	0.8fcd	0.7fcd	0.6fcd	0.6fcd

Intensities in 0° c-plane

0°	2°	4°	6°	8°	10°	12°	14°	16°	18°	20°	22°	24°	26°	28°	30°	32°	34°	36°	38°
2420	2373	2230	1997	1725	1450	1202	994	823	683	579	498	434	381	325	248	135	53	26	20
100%	98%	92%	83%	71%	60%	50%	41%	34%	28%	24%	21%	18%	16%	13%	10%	6%	2%	1%	1%

Intensities in 90° c-plane

0°	2°	4°	6°	8°	10°	12°	14°	16°	18°	20°	22°	24°	26°	28°	30°	32°	34°	36°	38°
2420	2370	2207	1968	1696	1436	1208	1005	835	696	586	500	437	387	333	248	143	58	24	19
100%	98%	91%	81%	70%	59%	50%	42%	34%	29%	24%	21%	18%	16%	14%	10%	6%	2%	1%	1%

Intensities in 180° c-plane

0°	2°	4°	6°	8°	10°	12°	14°	16°	18°	20°	22°	24°	26°	28°	30°	32°	34°	36°	38°
2420	2373	2230	1997	1725	1450	1202	994	823	683	579	498	434	381	325	248	135	53	26	20
100%	98%	92%	83%	71%	60%	50%	41%	34%	28%	24%	21%	18%	16%	13%	10%	6%	2%	1%	1%

Intensities in 270° c-plane

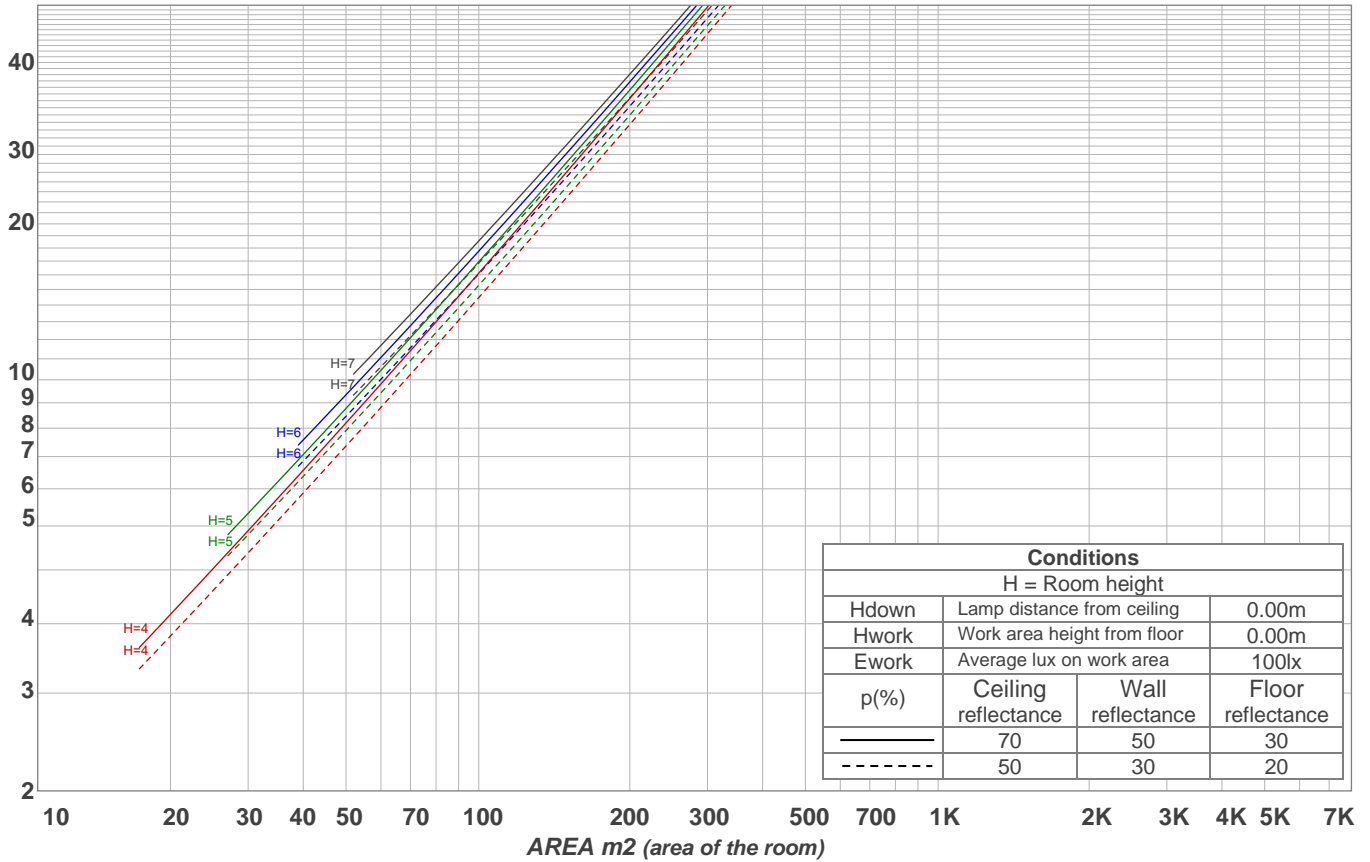
0°	2°	4°	6°	8°	10°	12°	14°	16°	18°	20°	22°	24°	26°	28°	30°	32°	34°	36°	38°
2420	2370	2207	1968	1696	1436	1208	1005	835	696	586	500	437	387	333	248	143	58	24	19
100%	98%	91%	81%	70%	59%	50%	42%	34%	29%	24%	21%	18%	16%	14%	10%	6%	2%	1%	1%

Beam angle 50%	Field angle 10%	Cutoff angle 2,5%	Intensity ratio in 120° cone	Intensity ratio in 90° cone
23.9°	60.2°	67.7°	98.4%	97.2%

www.specialtylightingindustries.com As a result of our continuous improvement, values are subject to change without notice. These are delivered results and can vary +/- 10% from published source data range.

LAMPS (number of lamps)
50

Light planning Luminaire budgetary diagram



Luminaire budgetary diagram AREA m2 (area of the room) Coefficients of Utilization

Ceiling reflectance	80				70				50			30			10			0			
Wall reflectance	70	50	30	10	70	50	30	10	50	30	10	50	30	10	50	30	10	50	30	10	0
Floor reflectance	20	20	20	20	20	20	20	20	20	20	20	20	20	20	20	20	20	20	20	20	0
RCR	(RCR: Room Cavity Ratio)																				
	Room Values are expressed as percentage of Lumens delivered to the task surface																				
0	119	119	119	119	116	116	116	116	111	111	111	106	106	106	102	102	102	100	100	100	
1	114	112	110	108	112	110	108	106	106	104	103	102	101	100	99	98	97	95	95	95	
2	110	106	102	99	108	104	101	98	101	98	96	98	96	94	95	93	92	90	90	90	
3	106	100	96	93	104	99	95	92	96	93	90	94	91	89	92	90	88	86	86	86	
4	102	95	91	87	100	94	90	87	92	89	86	90	87	85	89	86	84	83	83	83	
5	98	91	86	83	96	90	86	82	88	85	82	87	84	81	85	83	80	79	79	79	
6	94	87	82	79	93	86	82	79	85	81	78	84	80	78	83	79	77	76	76	76	
7	91	84	79	75	90	83	78	75	82	78	75	81	77	74	80	77	74	73	73	73	
8	88	80	76	72	87	80	75	72	79	75	72	78	74	72	77	74	71	70	70	70	
9	85	77	73	69	84	77	72	69	76	72	69	75	72	69	75	71	69	68	68	68	
10	82	75	70	67	82	74	70	67	74	69	67	73	69	67	72	69	66	65	65	65	

Zonal Lumen Summary

0°-10°	10°-20°	20°-30°	30°-40°	40°-50°	50°-60°	60°-70°	70°-80°	80°-90°
179 lm	254 lm	187 lm	42.2 lm	9.08 lm	4.60 lm	4.08 lm	3.85 lm	3.36 lm
90°-100°	100°-110°	110°-120°	120°-130°	130°-140°	140°-150°	150°-160°	160°-170°	170°-180°
0.000 lm	0.000 lm	0.000 lm	0.000 lm	0.000 lm	0.000 lm	0.000 lm	0.000 lm	0.000 lm