

Light efficiency:



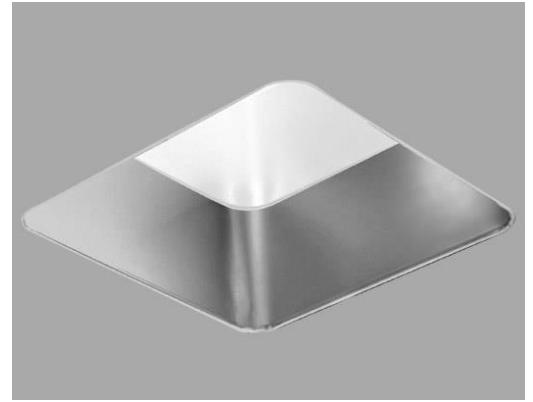
Output: 960 lm

Light quality:

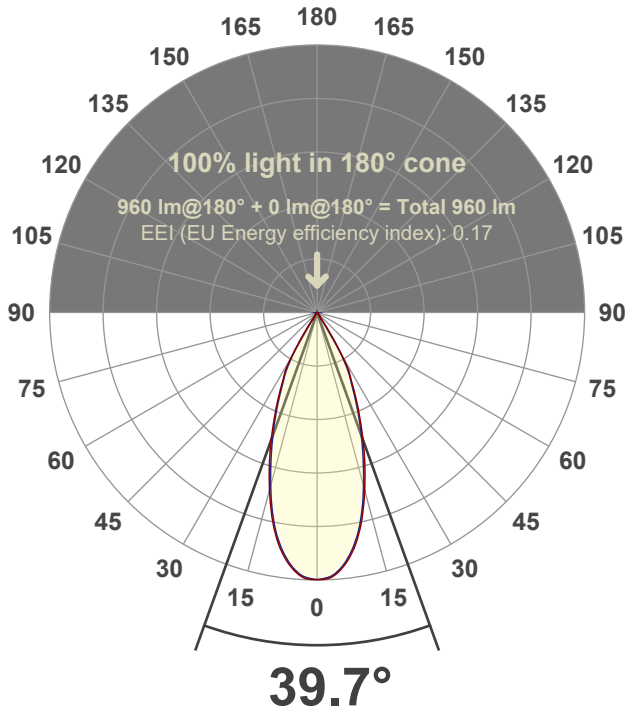


Peak: 2012 cd

Power: 12.5 W



Beam angle



Test number:

RV3D-SA-C11-30-40°-Rev2A

Luminaire Model:

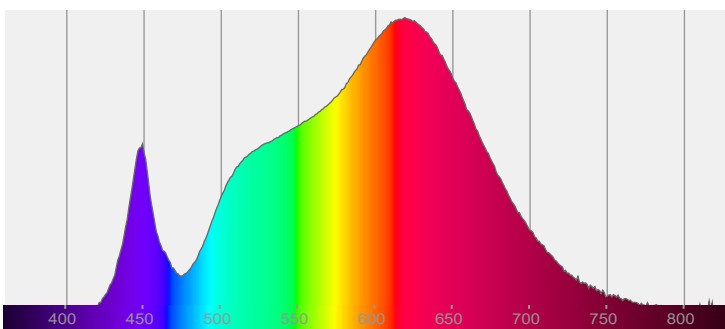
Rivet 3" Adjustable Square Downlight-C11-3000k-40°

Date and time:

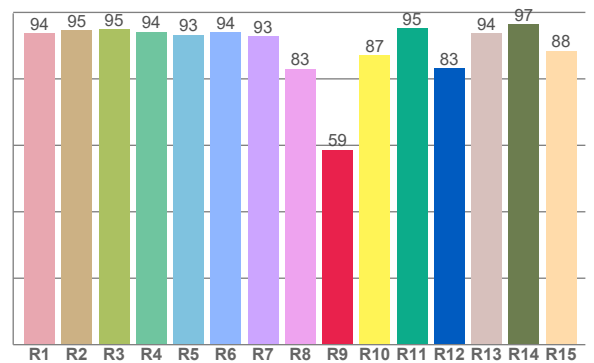
1/4/2023 5:10:27 PM

LUM: 960

Spectra



CRI: 92.6 (R1-R8)



Color parameters

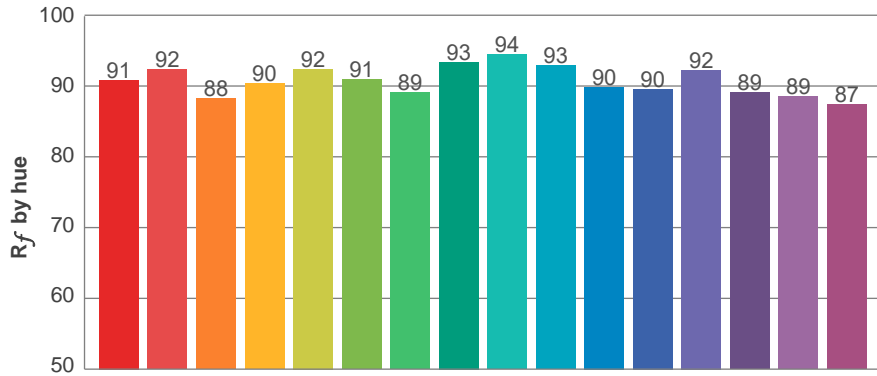
	Color rendering index	Red component	Color fidelity	Color gamut	Color quality scale	Color coordinate cie 1931	Color coordinate cie 1931	Color coordinate	Color coordinate	Color deviation from black body
	CRI	CRI R9	TM30 R <sub>f</sub>	TM30 R <sub>g</sub>	CQS	x	y	u	v	Δuv
	92.6	58.7	90.9	102.1	90.5	0.435	0.404	0.249	0.347	0.0005

**$R_f$  90.9**  
Fidelity index  $R_f$

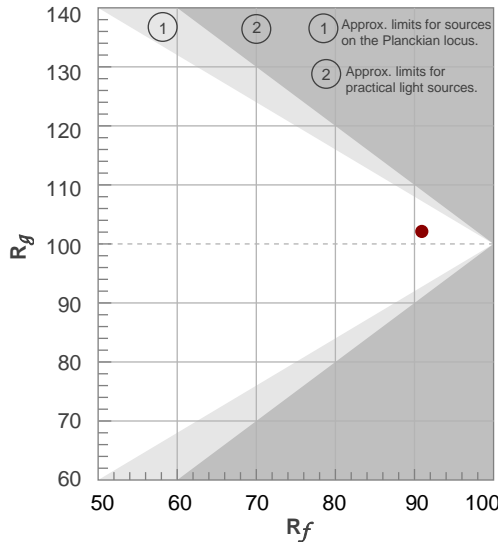
**$R_g$  102.1**  
Gammut index  $R_g$

TM30: 90.9

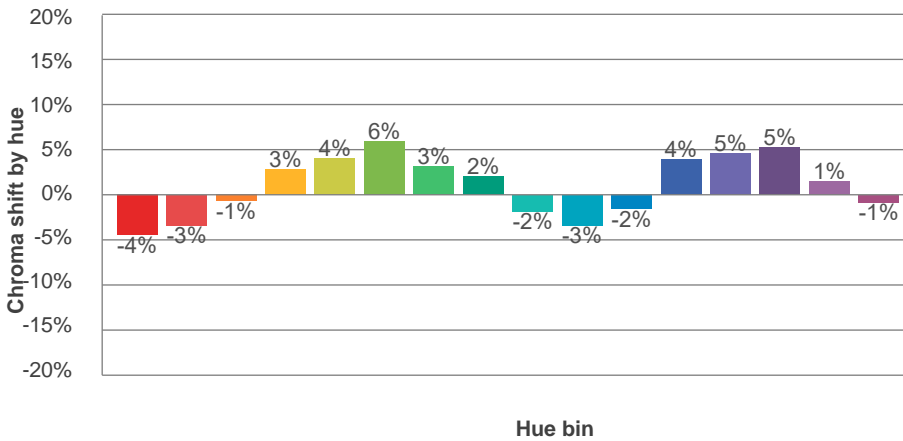
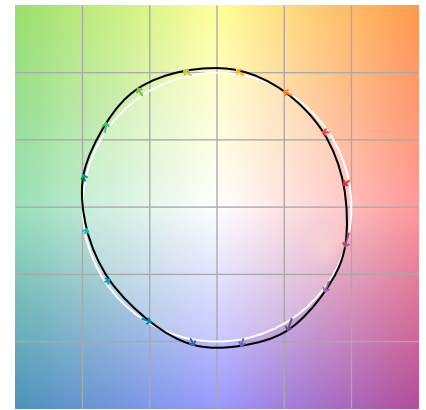
TM-30Color



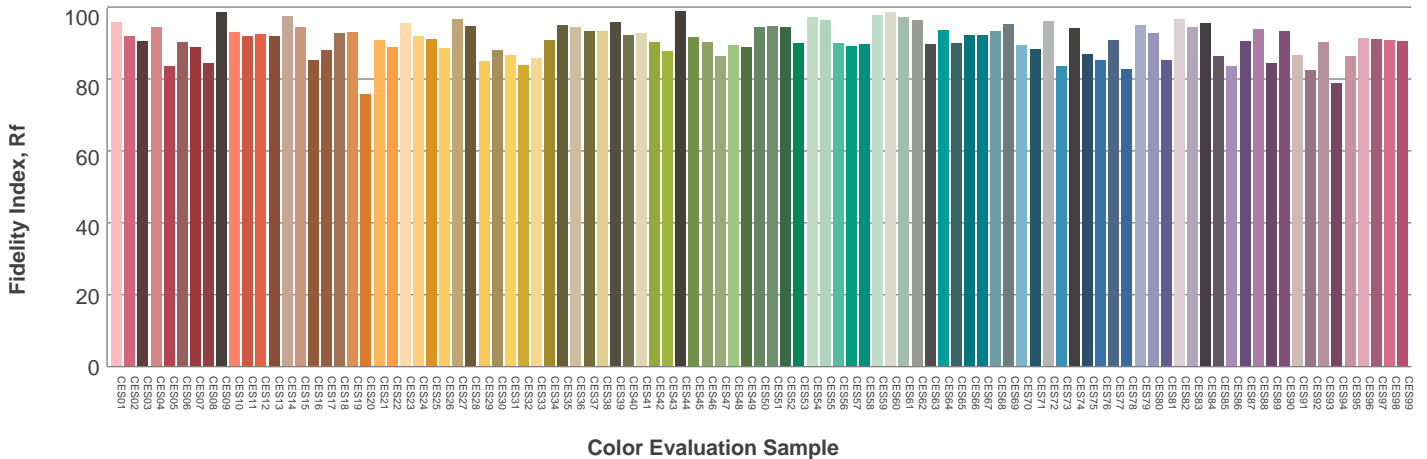
Hue Bin	$R_f$	Graphic shifts (%)	
		Chroma	Hue
1	91	-4%	-2%
2	92	-3%	3%
3	88	-1%	6%
4	90	3%	5%
5	92	4%	4%
6	91	6%	0%
7	89	3%	-6%
8	93	2%	-4%
9	94	-2%	-3%
10	93	-3%	1%
11	90	-2%	6%
12	90	4%	3%
13	92	5%	-2%
14	89	5%	-7%
15	89	1%	-7%
16	87	-1%	-10%



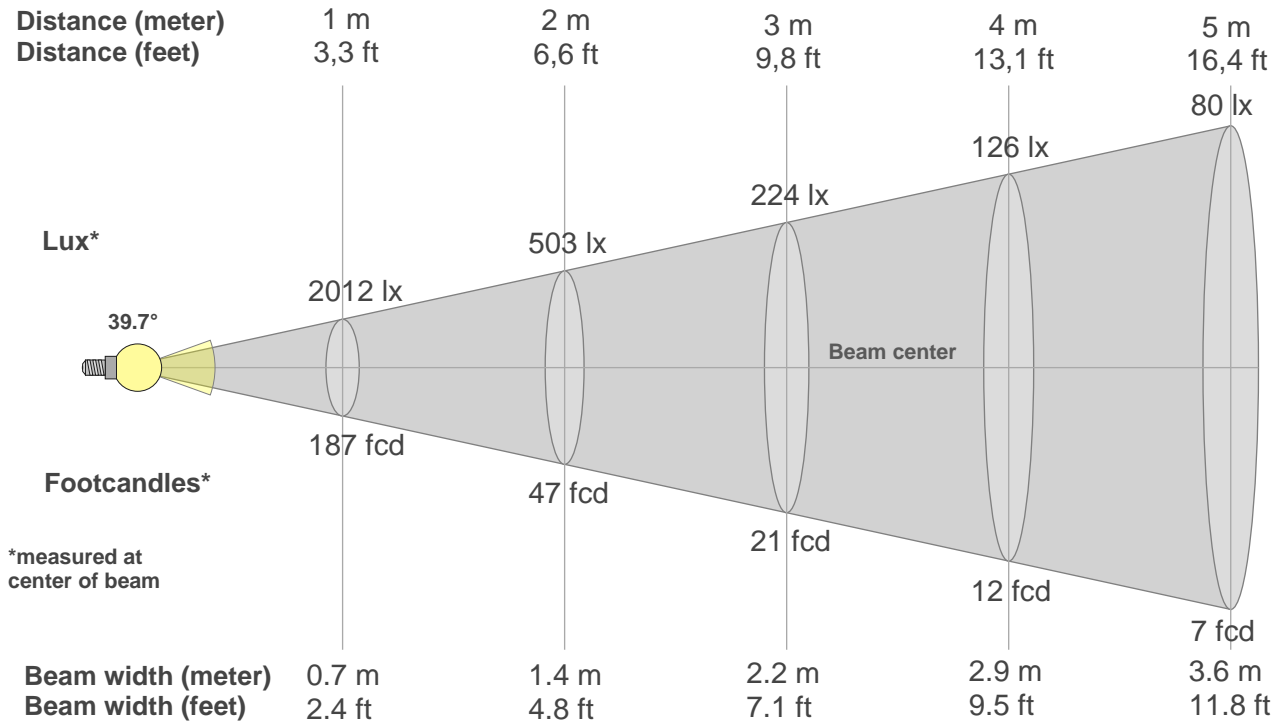
Color vector graphics



Color distortion



### Beam details



#### Beam intensities from 1-20m

1m	2m	3m	4m	5m	6m	7m	8m	9m	10m	11m	12m	13m	14m	15m	16m	17m	18m	19m	20m
3.3ft	6.6ft	9.8ft	13.1ft	16.4ft	19.7ft	23ft	26.2ft	29.5ft	32.8ft	36.1ft	39.4ft	42.7ft	45.9ft	49.2ft	52.5ft	55.8ft	59.1ft	62.3ft	65.6ft
2012lx	503lx	224lx	126lx	80lx	56lx	41lx	31lx	25lx	20lx	17lx	14lx	12lx	10lx	9lx	8lx	7lx	6lx	6lx	5lx
186.9fcd	46.7fcd	20.8fcd	11.7fcd	7.5fcd	5.2fcd	3.8fcd	2.9fcd	2.3fcd	1.9fcd	1.5fcd	1.3fcd	1.1fcd	1fcd	0.8fcd	0.7fcd	0.6fcd	0.6fcd	0.5fcd	0.5fcd

#### Intensities in 0° c-plane

0°	2°	4°	6°	8°	10°	12°	14°	16°	18°	20°	22°	24°	26°	28°	30°	32°	34°	36°	38°
2012	2012	1979	1922	1841	1739	1614	1466	1315	1164	1015	869	741	623	522	402	226	79	39	29
100%	100%	98%	96%	92%	86%	80%	73%	65%	58%	50%	43%	37%	31%	26%	20%	11%	4%	2%	1%

#### Intensities in 90° c-plane

0°	2°	4°	6°	8°	10°	12°	14°	16°	18°	20°	22°	24°	26°	28°	30°	32°	34°	36°	38°
2012	2001	1970	1913	1827	1719	1587	1437	1277	1122	976	840	711	593	500	371	221	104	45	26
100%	99%	98%	95%	91%	85%	79%	71%	63%	56%	48%	42%	35%	29%	25%	18%	11%	5%	2%	1%

#### Intensities in 180° c-plane

0°	2°	4°	6°	8°	10°	12°	14°	16°	18°	20°	22°	24°	26°	28°	30°	32°	34°	36°	38°
2012	2012	1979	1922	1841	1739	1614	1466	1315	1164	1015	869	741	623	522	402	226	79	39	29
100%	100%	98%	96%	92%	86%	80%	73%	65%	58%	50%	43%	37%	31%	26%	20%	11%	4%	2%	1%

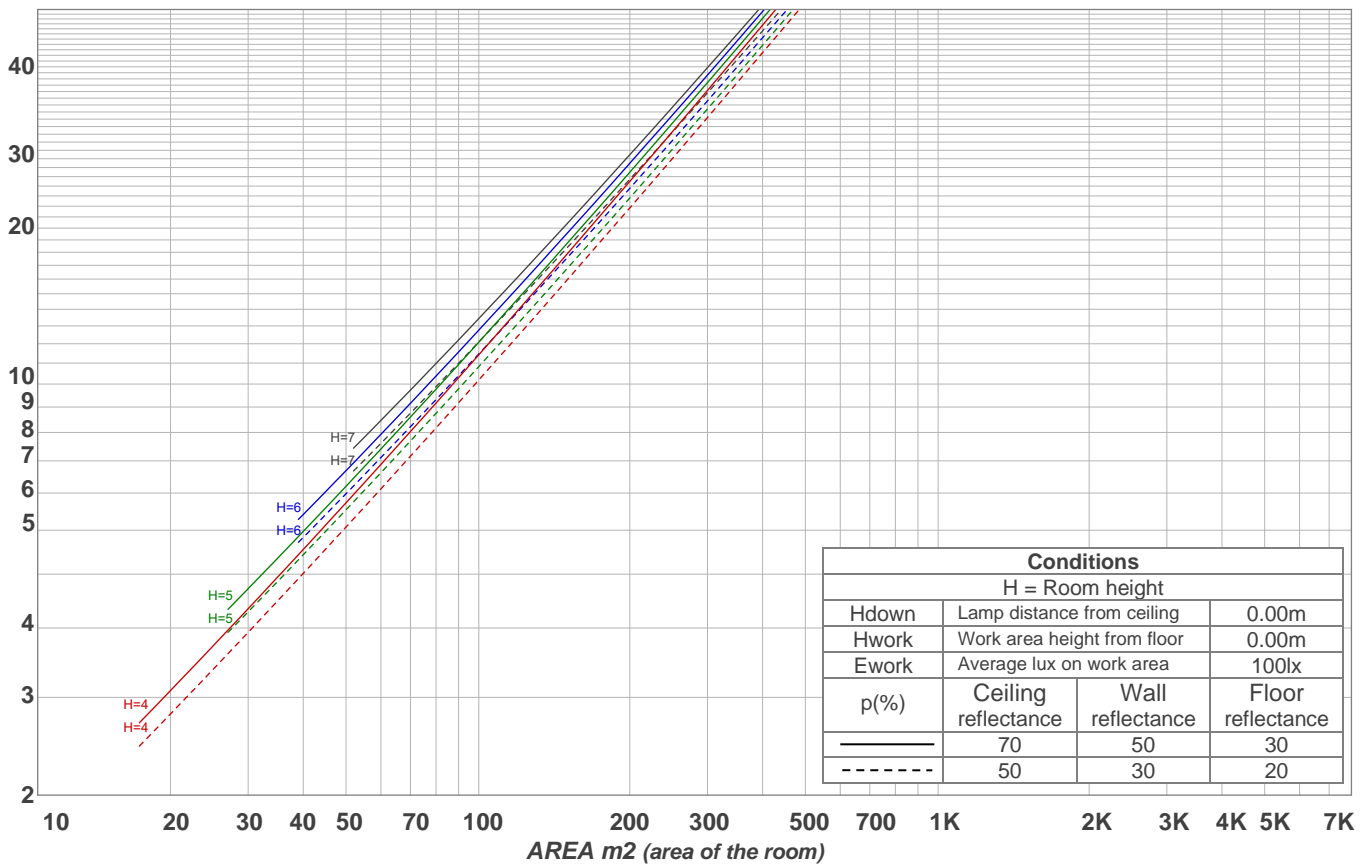
#### Intensities in 270° c-plane

0°	2°	4°	6°	8°	10°	12°	14°	16°	18°	20°	22°	24°	26°	28°	30°	32°	34°	36°	38°
2012	2001	1970	1913	1827	1719	1587	1437	1277	1122	976	840	711	593	500	371	221	104	45	26
100%	99%	98%	95%	91%	85%	79%	71%	63%	56%	48%	42%	35%	29%	25%	18%	11%	5%	2%	1%

Beam angle 50%	Field angle 10%	Cutoff angle 2,5%	Intensity ratio in 120° cone	Intensity ratio in 90° cone
39.7°	64.6°	70.6°	98.7%	97.6%

LAMPS (number of lamps)  
50

### Light planning Luminaire budgetary diagram



### Luminaire budgetary diagram AREA m2 (area of the room) Coefficients of Utilization

Ceiling reflectance	80				70				50			30			10			0
Wall reflectance	70	50	30	10	70	50	30	10	50	30	10	50	30	10	50	30	10	0
Floor reflectance	20	20	20	20	20	20	20	20	20	20	20	20	20	20	20	20	20	0
RCR	(RCR: Room Cavity Ratio)																	
	Room Values are expressed as percentage of Lumens delivered to the task surface																	
0	119	119	119	119	116	116	116	116	111	111	111	106	106	106	102	102	102	100
1	114	112	109	107	112	109	107	106	105	104	102	102	100	99	98	97	96	95
2	109	105	101	98	107	103	100	97	100	98	95	97	95	93	95	93	91	90
3	105	99	95	92	103	98	94	91	95	92	89	93	90	88	91	89	87	85
4	101	94	89	86	99	93	89	85	91	87	84	89	86	83	87	85	82	81
5	97	90	85	81	95	89	84	81	87	83	80	85	82	79	84	81	79	77
6	93	85	80	77	92	85	80	76	83	79	76	82	78	75	81	77	75	74
7	89	81	76	73	88	81	76	73	80	75	72	79	75	72	78	74	72	70
8	86	78	73	69	85	77	73	69	76	72	69	75	72	69	75	71	68	67
9	83	75	70	66	82	74	69	66	73	69	66	73	69	66	72	68	66	64
10	80	72	67	63	79	71	67	63	71	66	63	70	66	63	69	66	63	62

### Zonal Lumen Summary

0°-10°	10°-20°	20°-30°	30°-40°	40°-50°	50°-60°	60°-70°	70°-80°	80°-90°
179 lm	377 lm	306 lm	67.2 lm	12.7 lm	5.68 lm	5.00 lm	4.44 lm	3.36 lm
90°-100°	100°-110°	110°-120°	120°-130°	130°-140°	140°-150°	150°-160°	160°-170°	170°-180°
0.000 lm	0.000 lm	0.000 lm	0.000 lm	0.000 lm	0.000 lm	0.000 lm	0.000 lm	0.000 lm