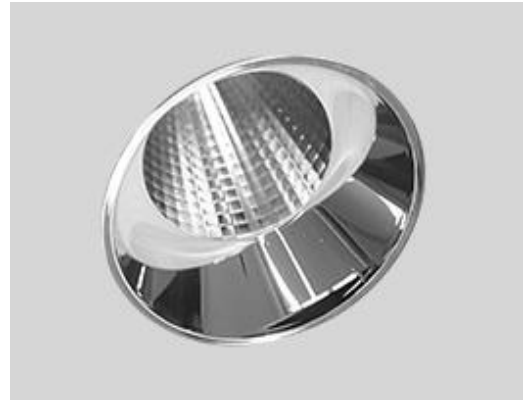


Light efficiency:



Output: 789 lm



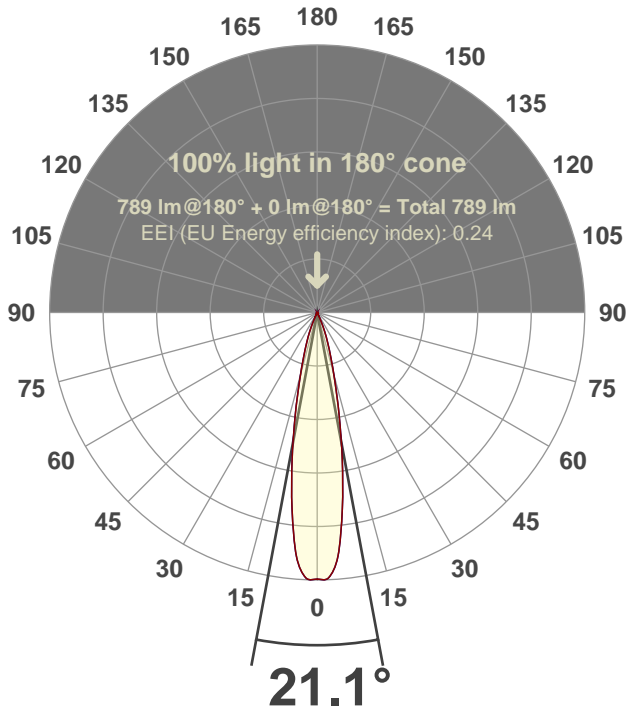
Light quality:



Peak: 4827 cd

Power: 15.3 W

Beam angle



Test number:

SCW3D-R-A14-AD3019-24°-Rev1

Luminaire Model:

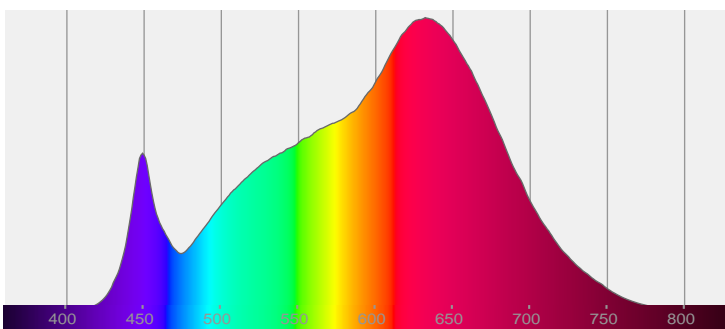
Scope Wonder 3" Round Downlight-A14-AD3019-24°

Date and time:

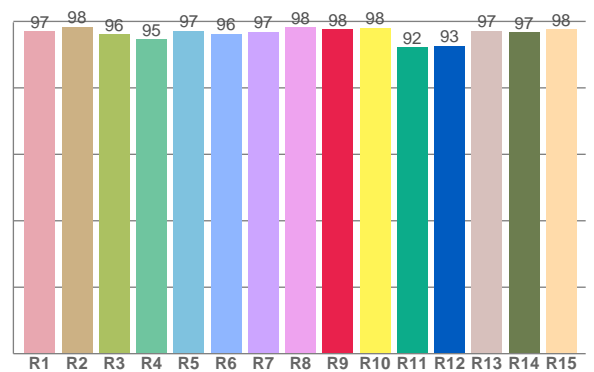
5/27/2021 7:48:59 PM

LUM: 789

Spectra



CRI: 96.8 (R1-R8)



Color parameters

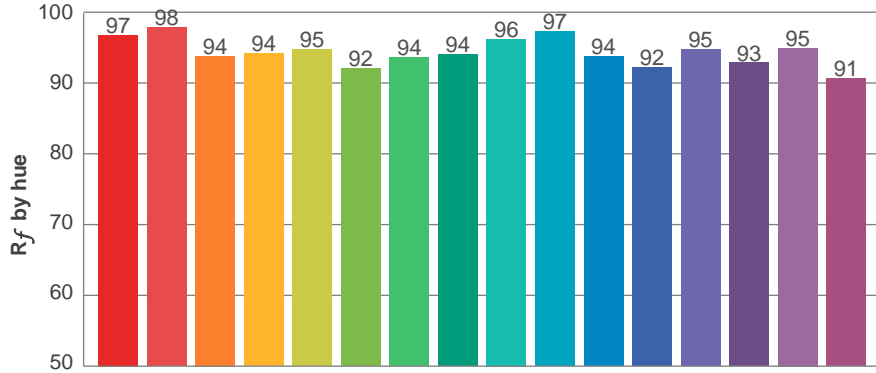
	Color rendering index	Red component	Color fidelity	Color gamut	Color quality scale	Color coordinate cie 1931	Color coordinate cie 1931	Color coordinate	Color coordinate	Color deviation from black body
	CRI	CRI R9	TM30 R _f	TM30 R _g	CQS	x	y	u	v	Δuv
	96.8	97.7	94.6	104.6	94.1	0.432	0.391	0.253	0.344	-0.0044

R_f 94.6
Fidelity index R_f

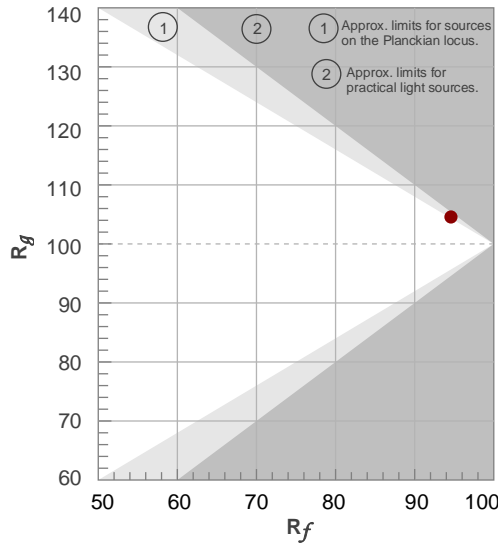
R_g 104.6
Gammut index R_g

TM30: 94.6

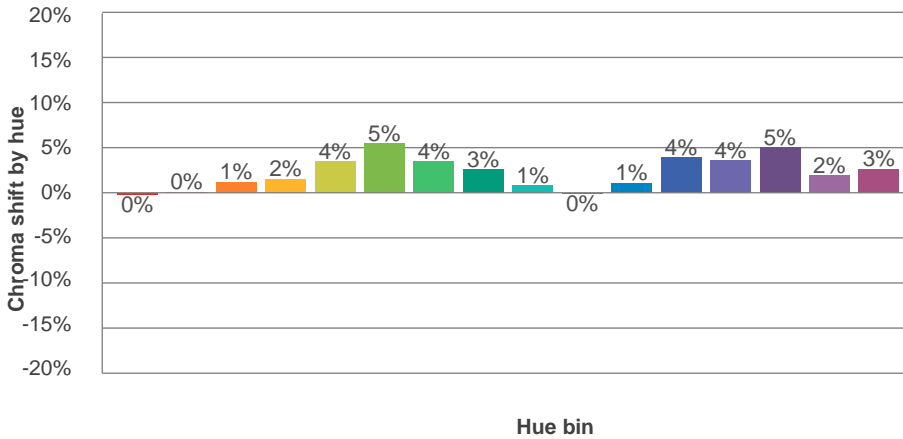
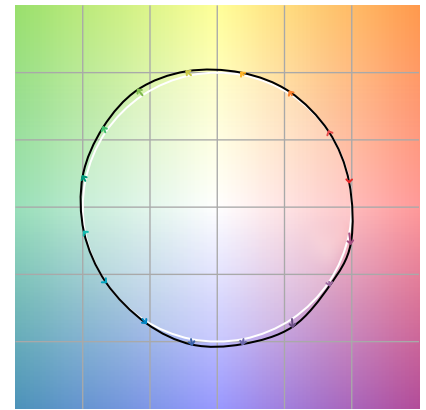
TM-30Color



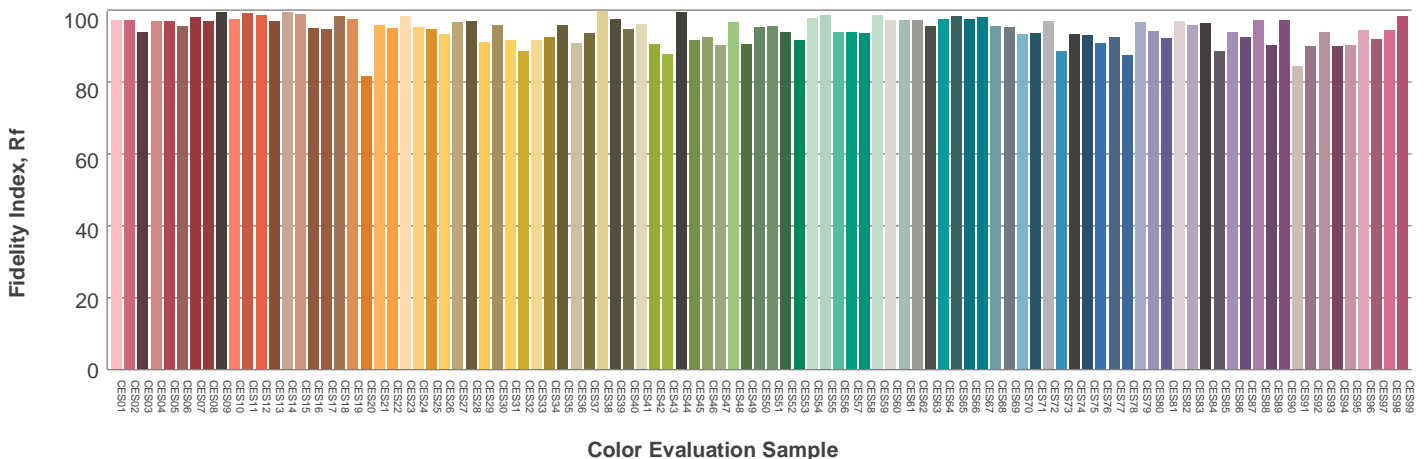
Hue Bin	R_f	Graphic shifts (%)	
		Chroma	Hue
1	97	0%	-1%
2	98	0%	1%
3	94	1%	3%
4	94	2%	2%
5	95	4%	3%
6	92	5%	1%
7	94	4%	-2%
8	94	3%	-3%
9	96	1%	-1%
10	97	0%	0%
11	94	1%	4%
12	92	4%	2%
13	95	4%	-1%
14	93	5%	-3%
15	95	2%	-2%
16	91	3%	-7%



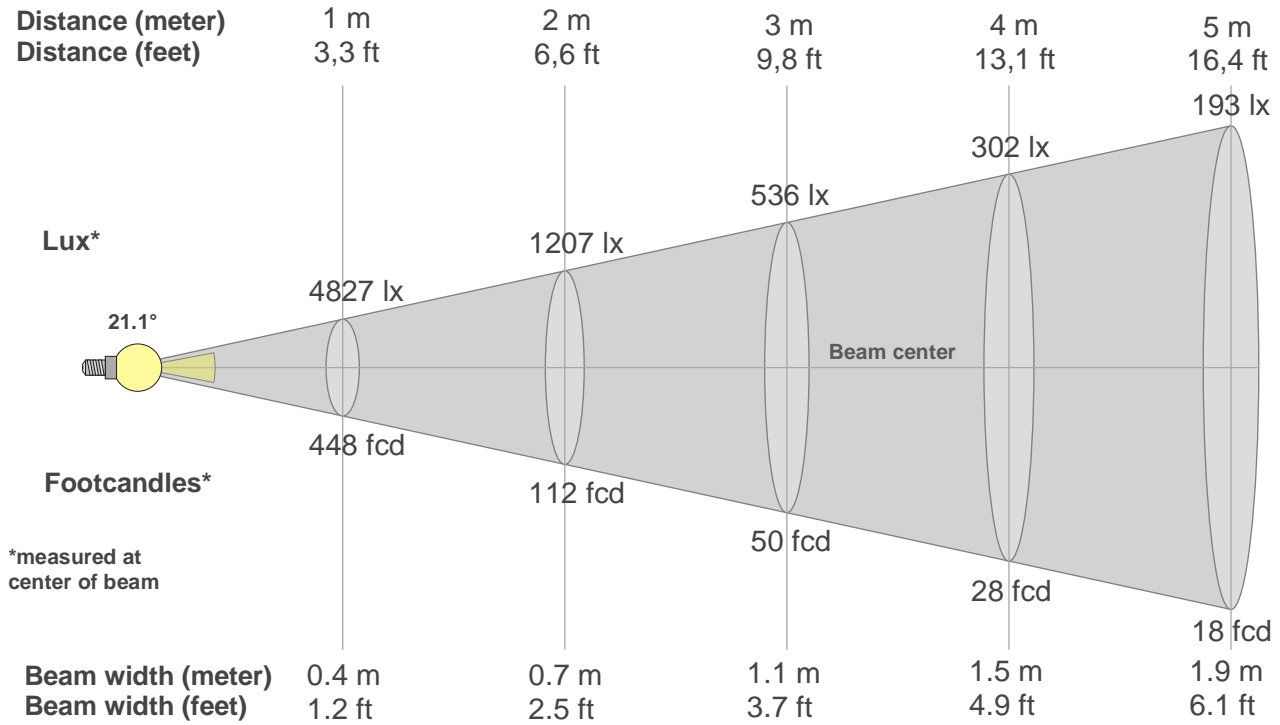
Color vector graphics



Color distortion



Beam details



Beam intensities from 1-20m

1m	2m	3m	4m	5m	6m	7m	8m	9m	10m	11m	12m	13m	14m	15m	16m	17m	18m	19m	20m
3.3ft	6.6ft	9.8ft	13.1ft	16.4ft	19.7ft	23ft	26.2ft	29.5ft	32.8ft	36.1ft	39.4ft	42.7ft	45.9ft	49.2ft	52.5ft	55.8ft	59.1ft	62.3ft	65.6ft
4827lx	1207lx	536lx	302lx	193lx	134lx	99lx	75lx	60lx	48lx	40lx	34lx	29lx	25lx	21lx	19lx	17lx	15lx	13lx	12lx
448.4fc	112.1fc	49.8fcd	28fcd	17.9fcd	12.5fcd	9.2fcd	7fcd	5.5fcd	4.5fcd	3.7fcd	3.1fcd	2.7fcd	2.3fcd	2fcd	1.8fcd	1.6fcd	1.4fcd	1.2fcd	1.1fcd

Intensities in 0° c-plane

0°	2°	4°	6°	8°	10°	12°	14°	16°	18°	20°	22°	24°	26°	28°	30°	32°	34°	36°	38°
4827	4811	4567	4041	3330	2602	1936	1413	1021	734	522	353	203	93	37	17	13	10	8	6
100%	100%	95%	84%	69%	54%	40%	29%	21%	15%	11%	7%	4%	2%	1%	0%	0%	0%	0%	0%

Intensities in 90° c-plane

0°	2°	4°	6°	8°	10°	12°	14°	16°	18°	20°	22°	24°	26°	28°	30°	32°	34°	36°	38°
4827	4811	4567	4041	3330	2602	1936	1413	1021	734	522	353	203	93	37	17	13	10	8	6
100%	100%	95%	84%	69%	54%	40%	29%	21%	15%	11%	7%	4%	2%	1%	0%	0%	0%	0%	0%

Intensities in 180° c-plane

0°	2°	4°	6°	8°	10°	12°	14°	16°	18°	20°	22°	24°	26°	28°	30°	32°	34°	36°	38°
4827	4811	4567	4041	3330	2602	1936	1413	1021	734	522	353	203	93	37	17	13	10	8	6
100%	100%	95%	84%	69%	54%	40%	29%	21%	15%	11%	7%	4%	2%	1%	0%	0%	0%	0%	0%

Intensities in 270° c-plane

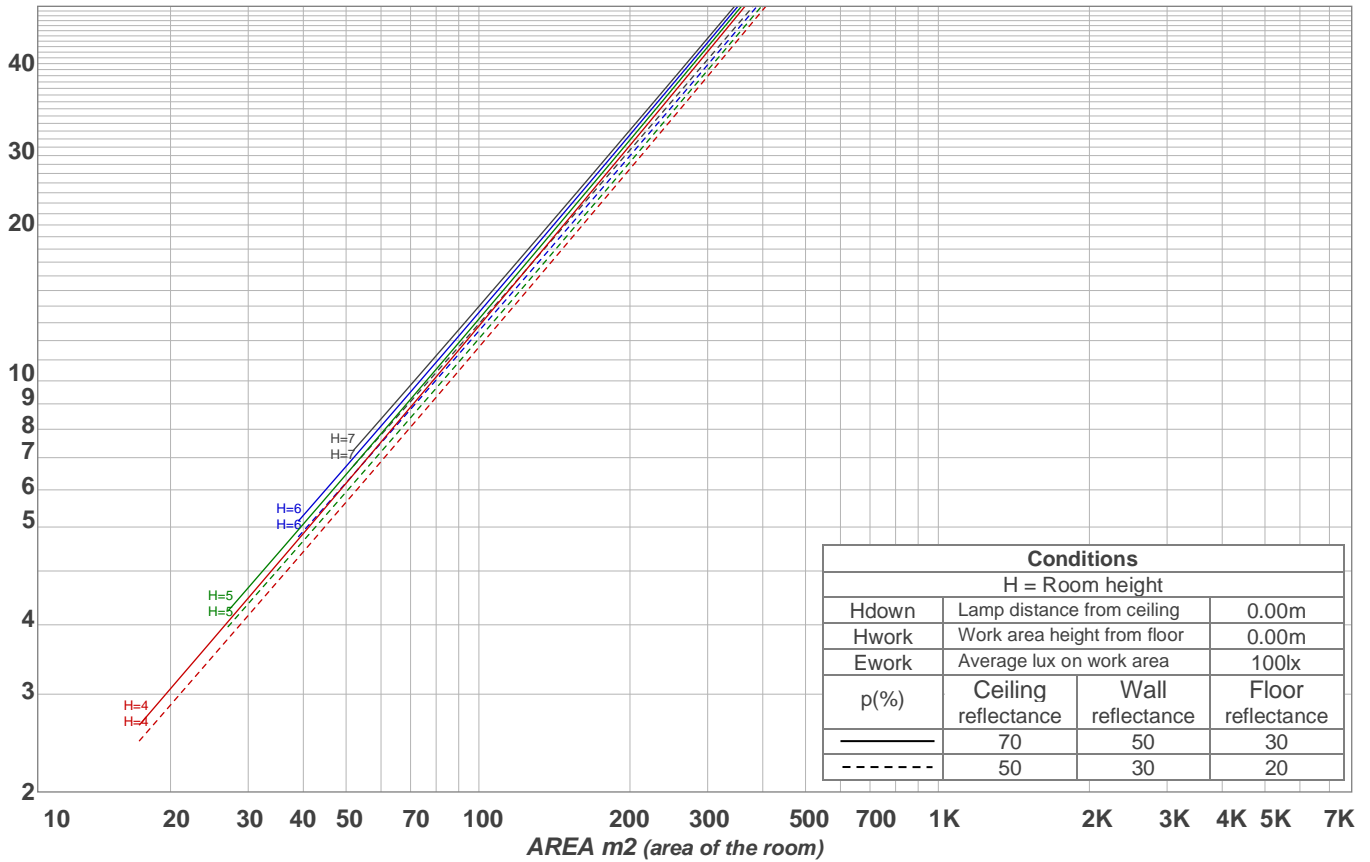
0°	2°	4°	6°	8°	10°	12°	14°	16°	18°	20°	22°	24°	26°	28°	30°	32°	34°	36°	38°
4827	4811	4567	4041	3330	2602	1936	1413	1021	734	522	353	203	93	37	17	13	10	8	6
100%	100%	95%	84%	69%	54%	40%	29%	21%	15%	11%	7%	4%	2%	1%	0%	0%	0%	0%	0%

Beam angle 50%	Field angle 10%	Cutoff angle 2,5%	Intensity ratio in 120° cone	Intensity ratio in 90° cone
21.1°	40.9°	51°	99.6%	99.3%

LAMPS (number of lamps)

50

Light planning Luminaire budgetary diagram



Luminaire budgetary diagram AREA m2 (area of the room) Coefficients of Utilization

Ceiling reflectance	80				70				50			30			10			0
Wall reflectance	70	50	30	10	70	50	30	10	50	30	10	50	30	10	50	30	10	0
Floor reflectance	20	20	20	20	20	20	20	20	20	20	20	20	20	20	20	20	20	0
RCR	(RCR: Room Cavity Ratio)																	
	Room Values are expressed as percentage of Lumens delivered to the task surface																	
0	119	119	119	119	116	116	116	116	111	111	111	106	106	106	102	102	102	100
1	115	113	112	110	113	111	110	108	107	106	105	104	103	102	100	100	99	97
2	112	109	106	103	110	107	104	102	104	102	100	101	99	98	98	97	96	95
3	109	105	101	99	107	103	100	98	101	98	96	99	97	95	97	95	94	92
4	106	101	98	95	104	100	97	94	98	95	93	96	94	92	95	93	91	90
5	103	98	94	92	102	97	94	91	96	93	90	94	92	90	93	91	89	88
6	101	95	92	89	100	95	91	89	93	90	88	92	89	87	91	89	87	86
7	99	93	89	86	97	92	89	86	91	88	86	90	87	85	89	87	85	84
8	96	90	87	84	95	90	87	84	89	86	84	88	86	84	88	85	83	82
9	94	88	85	82	93	88	85	82	87	84	82	87	84	82	86	83	82	81
10	92	86	83	81	92	86	83	80	85	82	80	85	82	80	84	82	80	79

Zonal Lumen Summary

0°-10°	10°-20°	20°-30°	30°-40°	40°-50°	50°-60°	60°-70°	70°-80°	80°-90°
354 lm	343 lm	78.7 lm	5.84 lm	2.29 lm	1.23 lm	1.04 lm	1.13 lm	1.18 lm
90°-100°	100°-110°	110°-120°	120°-130°	130°-140°	140°-150°	150°-160°	160°-170°	170°-180°
0.000 lm	0.000 lm	0.000 lm	0.000 lm	0.000 lm	0.000 lm	0.000 lm	0.000 lm	0.000 lm

UGR

p Ceiling	70	70	50	50	30	70	70	50	50	30	
p Walls	50	30	50	30	30	50	30	50	30	30	
p Floor	20	20	20	20	20	20	20	20	20	20	
Room size X Y	Viewing direction at right angles to lamp axis					Viewing direction parallel to lamp axis					
2H	2H	10.2	10.5	10.2	10.7	10.9	10.2	10.5	10.2	10.7	10.9
	3H	11.4	11.9	11.7	12.1	12.2	11.4	11.9	11.7	12.1	12.2
	4H	12.4	12.9	12.8	13.1	13.4	12.4	12.9	12.8	13.1	13.4
	6H	14.2	14.6	14.5	14.9	15.2	14.2	14.6	14.5	14.9	15.2
	8H	15.3	15.7	15.6	16.0	16.4	15.3	15.7	15.6	16.0	16.4
	12H	16.5	16.9	16.9	17.3	17.7	16.5	16.9	16.9	17.3	17.7
4H	2H	10.3	10.8	10.7	11.0	11.2	10.3	10.8	10.7	11.0	11.2
	3H	12.2	12.6	12.5	12.9	13.3	12.2	12.6	12.5	12.9	13.3
	4H	13.5	13.8	13.9	14.3	14.8	13.5	13.8	13.9	14.3	14.8
	6H	15.5	15.9	16.0	16.2	16.6	15.5	15.9	16.0	16.2	16.6
	8H	16.8	17.2	17.3	17.5	17.9	16.8	17.2	17.3	17.5	17.9
	12H	18.1	18.5	18.7	18.9	19.3	18.1	18.5	18.7	18.9	19.3
8H	4H	14.2	14.6	14.7	14.9	15.3	14.2	14.6	14.7	14.9	15.3
	6H	16.5	16.8	17.0	17.2	17.8	16.5	16.8	17.0	17.2	17.8
	8H	18.1	18.3	18.6	18.8	19.4	18.1	18.3	18.6	18.8	19.4
	12H	19.7	19.8	20.3	20.3	20.9	19.7	19.8	20.3	20.3	20.9
12H	4H	14.4	14.7	14.9	15.1	15.5	14.4	14.7	14.9	15.1	15.5
	6H	16.9	17.1	17.4	17.6	18.3	16.9	17.1	17.4	17.6	18.3
	8H	18.5	18.7	19.1	19.2	19.8	18.5	18.7	19.1	19.2	19.8

Corrected glare indices referring to 789 lm total luminous flux