

Light efficiency:

52 Lumen/Watt

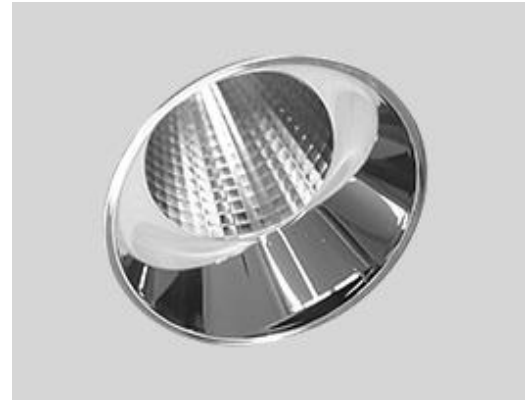
Output: 797 lm

Light quality:

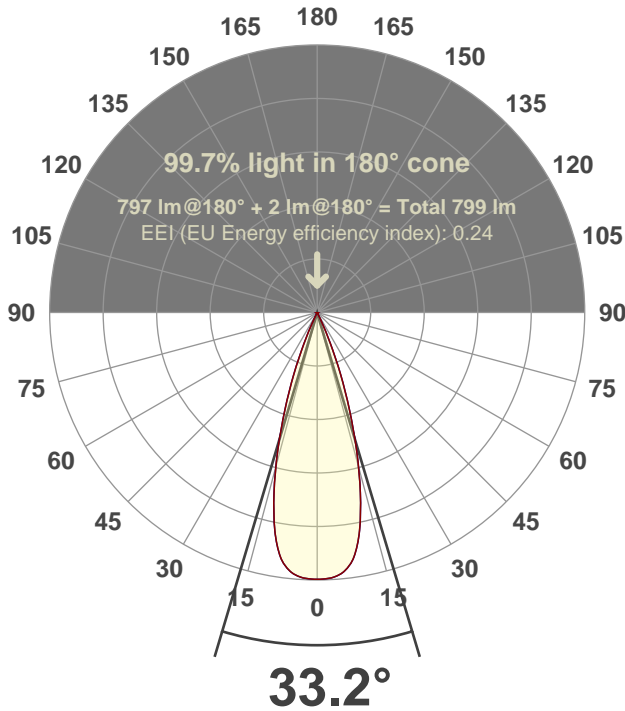
CRI: 96.8

Peak: 2693 cd

Power: 15.2 W



Beam angle



Test number:

SCW3D-R-A14-AD3019-36°-Rev1

Luminaire Model:

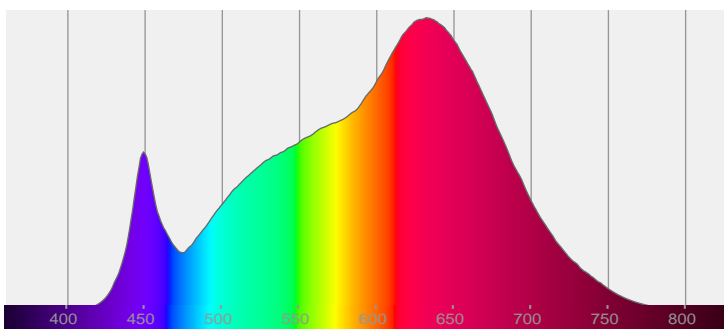
Scope Wonder 3" Round Downlight-A14-AD3019-36°

Date and time:

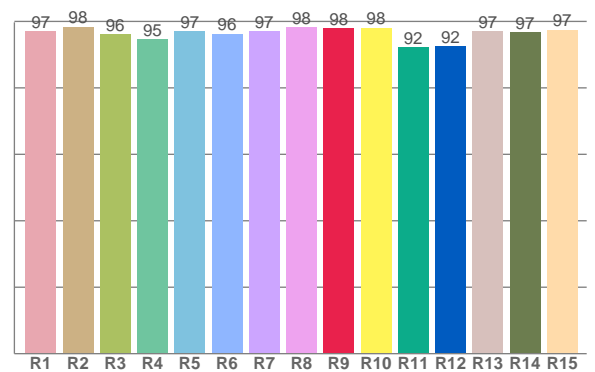
5/27/2021 7:52:21 PM

LUM: 797

Spectra



CRI: 96.8 (R1-R8)

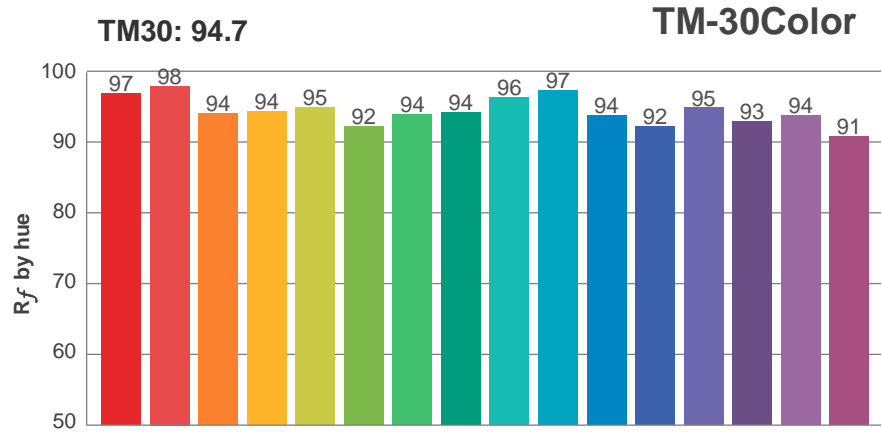


Color parameters

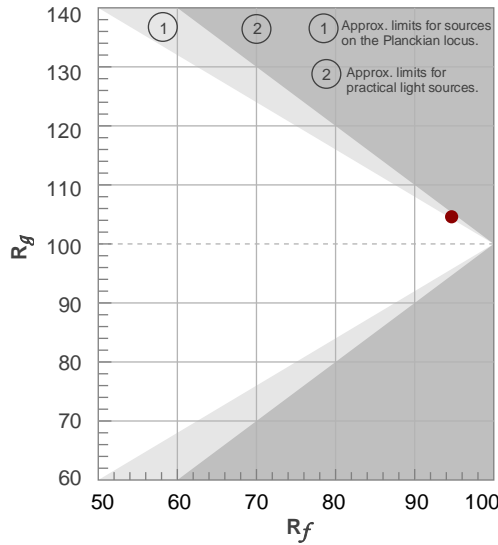
	Color rendering index	Red component	Color fidelity	Color gamut	Color quality scale	Color coordinate cie 1931	Color coordinate cie 1931	Color coordinate	Color coordinate	Color deviation from black body
	CRI	CRI R9	TM30 R <sub>f</sub>	TM30 R <sub>g</sub>	CQS	x	y	u	v	Δuv
	96.8	97.9	94.7	104.6	94.3	0.431	0.391	0.252	0.344	-0.0043

**$R_f$  94.7**  
Fidelity index  $R_f$

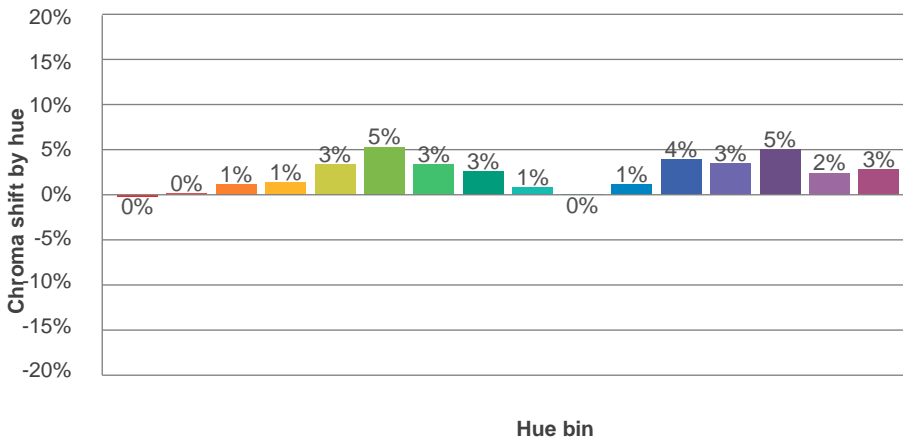
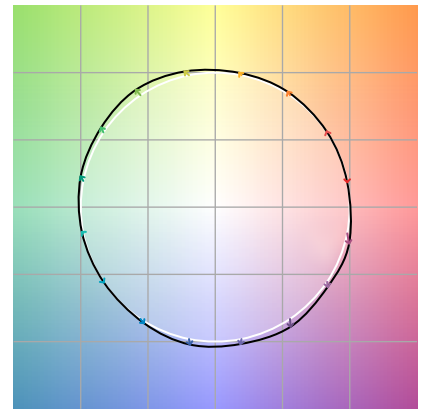
**$R_g$  104.6**  
Gammut index  $R_g$



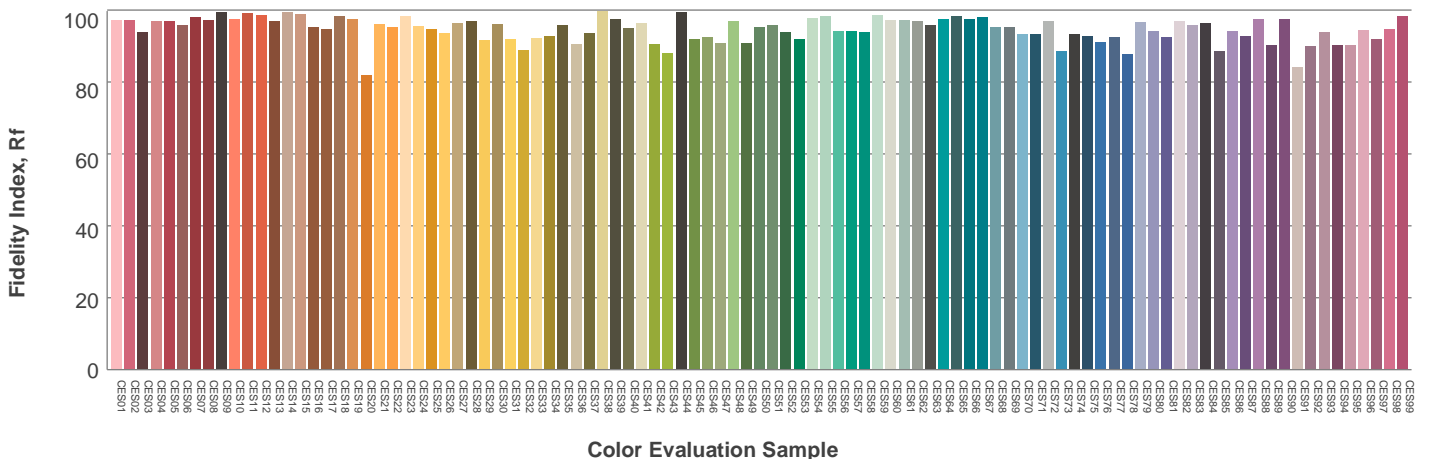
Hue Bin	$R_f$	Graphic shifts (%)	
		Chroma	Hue
1	97	0%	-1%
2	98	0%	1%
3	94	1%	3%
4	94	1%	2%
5	95	3%	3%
6	92	5%	1%
7	94	3%	-2%
8	94	3%	-3%
9	96	1%	-1%
10	97	0%	1%
11	94	1%	4%
12	92	4%	2%
13	95	3%	-1%
14	93	5%	-3%
15	94	2%	-3%
16	91	3%	-7%



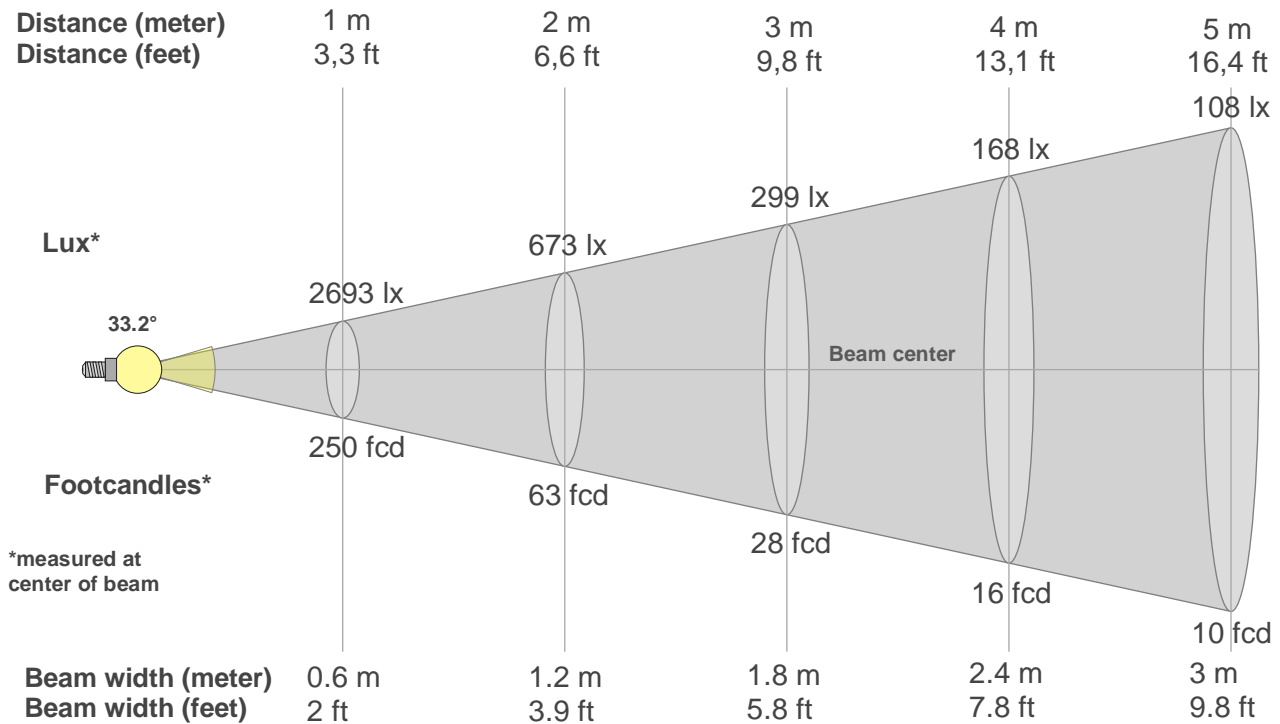
Color vector graphics



Color distortion



### Beam details



#### Beam intensities from 1-20m

1m	2m	3m	4m	5m	6m	7m	8m	9m	10m	11m	12m	13m	14m	15m	16m	17m	18m	19m	20m
3.3ft	6.6ft	9.8ft	13.1ft	16.4ft	19.7ft	23ft	26.2ft	29.5ft	32.8ft	36.1ft	39.4ft	42.7ft	45.9ft	49.2ft	52.5ft	55.8ft	59.1ft	62.3ft	65.6ft
2693lx	673lx	299lx	168lx	108lx	75lx	55lx	42lx	33lx	27lx	22lx	19lx	16lx	14lx	12lx	11lx	9lx	8lx	7lx	7lx
250.2fcd	62.5fcd	27.8fcd	15.6fcd	10fcd	6.9fcd	5.1fcd	3.9fcd	3.1fcd	2.5fcd	2.1fcd	1.7fcd	1.5fcd	1.3fcd	1.1fcd	1fcd	0.9fcd	0.8fcd	0.7fcd	0.6fcd

#### Intensities in 0° c-plane

0°	2°	4°	6°	8°	10°	12°	14°	16°	18°	20°	22°	24°	26°	28°	30°	32°	34°	36°	38°
2693	2688	2670	2625	2526	2349	2097	1788	1450	1107	795	512	276	112	40	21	14	10	8	6
100%	100%	99%	97%	94%	87%	78%	66%	54%	41%	30%	19%	10%	4%	1%	1%	1%	0%	0%	0%

#### Intensities in 90° c-plane

0°	2°	4°	6°	8°	10°	12°	14°	16°	18°	20°	22°	24°	26°	28°	30°	32°	34°	36°	38°
2693	2688	2670	2625	2526	2349	2097	1788	1450	1107	795	512	276	112	40	21	14	10	8	6
100%	100%	99%	97%	94%	87%	78%	66%	54%	41%	30%	19%	10%	4%	1%	1%	1%	0%	0%	0%

#### Intensities in 180° c-plane

0°	2°	4°	6°	8°	10°	12°	14°	16°	18°	20°	22°	24°	26°	28°	30°	32°	34°	36°	38°
2693	2688	2670	2625	2526	2349	2097	1788	1450	1107	795	512	276	112	40	21	14	10	8	6
100%	100%	99%	97%	94%	87%	78%	66%	54%	41%	30%	19%	10%	4%	1%	1%	1%	0%	0%	0%

#### Intensities in 270° c-plane

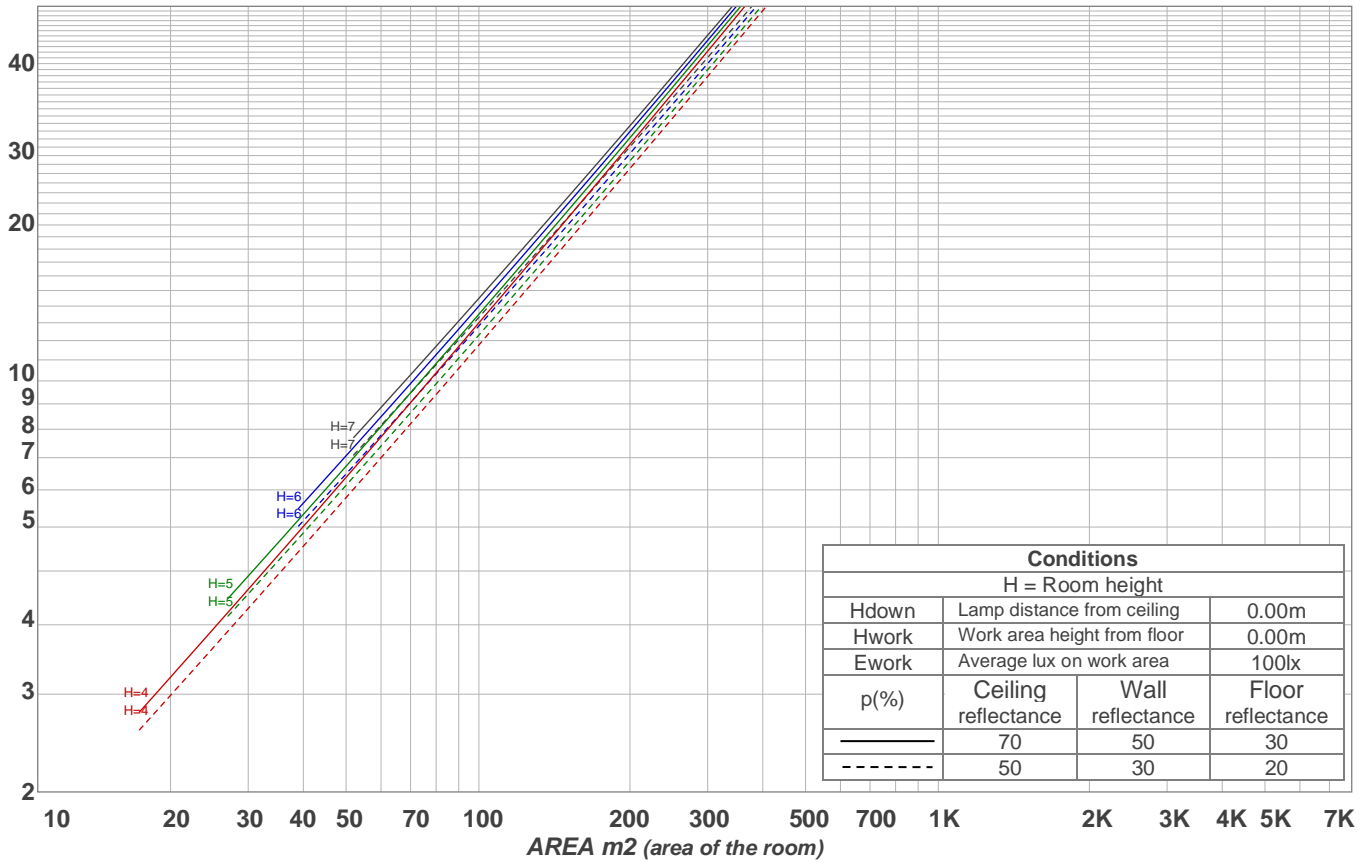
0°	2°	4°	6°	8°	10°	12°	14°	16°	18°	20°	22°	24°	26°	28°	30°	32°	34°	36°	38°
2693	2688	2670	2625	2526	2349	2097	1788	1450	1107	795	512	276	112	40	21	14	10	8	6
100%	100%	99%	97%	94%	87%	78%	66%	54%	41%	30%	19%	10%	4%	1%	1%	1%	0%	0%	0%

Beam angle 50%	Field angle 10%	Cutoff angle 2,5%	Intensity ratio in 120° cone	Intensity ratio in 90° cone
33.2°	48.2°	54.5°	99.4%	99.1%

LAMPS (number of lamps)

50

### Light planning Luminaire budgetary diagram



### Luminaire budgetary diagram AREA m2 (area of the room) Coefficients of Utilization

Ceiling reflectance	80				70				50			30			10			0
Wall reflectance	70	50	30	10	70	50	30	10	50	30	10	50	30	10	50	30	10	0
Floor reflectance	20	20	20	20	20	20	20	20	20	20	20	20	20	20	20	20	20	0
RCR	(RCR: Room Cavity Ratio)																	
	Room Values are expressed as percentage of Lumens delivered to the task surface																	
0	119	119	119	119	116	116	116	116	111	111	111	106	106	106	102	102	102	100
1	115	113	111	109	113	111	109	108	107	105	104	103	102	101	100	99	98	97
2	111	108	105	102	109	106	103	101	103	101	99	100	98	97	97	96	95	93
3	108	103	100	97	106	102	99	96	99	97	95	97	95	93	95	93	92	90
4	105	99	95	92	103	98	95	92	96	93	91	94	92	90	93	91	89	88
5	101	96	92	89	100	95	91	88	93	90	88	92	89	87	90	88	86	85
6	99	92	88	85	97	92	88	85	90	87	85	89	86	84	88	86	84	82
7	96	89	85	82	95	89	85	82	88	84	82	87	84	81	86	83	81	80
8	93	87	83	80	92	86	82	80	85	82	79	84	81	79	84	81	79	78
9	91	84	80	77	90	84	80	77	83	80	77	82	79	77	82	79	77	76
10	88	82	78	75	88	81	78	75	81	77	75	80	77	75	80	77	75	74

### Zonal Lumen Summary

0°-10°	10°-20°	20°-30°	30°-40°	40°-50°	50°-60°	60°-70°	70°-80°	80°-90°
245 lm	430 lm	109 lm	5.96 lm	2.35 lm	1.22 lm	0.983 lm	0.957 lm	0.977 lm
90°-100°	100°-110°	110°-120°	120°-130°	130°-140°	140°-150°	150°-160°	160°-170°	170°-180°
0.000 lm	0.000 lm	0.000 lm	0.000 lm	0.000 lm	0.000 lm	0.000 lm	0.000 lm	0.000 lm

### UGR

p Ceiling	70	70	50	50	30	70	70	50	50	30	
p Walls	50	30	50	30	30	50	30	50	30	30	
p Floor	20	20	20	20	20	20	20	20	20	20	
Room size X Y	Viewing direction at right angles to lamp axis					Viewing direction parallel to lamp axis					
2H	2H	10.2	10.6	10.2	10.7	10.9	10.2	10.6	10.2	10.7	10.9
	3H	11.1	11.6	11.4	11.8	12.0	11.1	11.6	11.4	11.8	12.0
	4H	12.0	12.5	12.3	12.7	12.9	12.0	12.5	12.3	12.7	12.9
	6H	13.4	13.8	13.6	14.1	14.4	13.4	13.8	13.6	14.1	14.4
	8H	14.3	14.7	14.6	15.0	15.4	14.3	14.7	14.6	15.0	15.4
	12H	15.2	15.6	15.5	16.0	16.4	15.2	15.6	15.5	16.0	16.4
4H	2H	10.3	10.8	10.6	11.0	11.2	10.3	10.8	10.6	11.0	11.2
	3H	11.8	12.2	12.1	12.5	13.0	11.8	12.2	12.1	12.5	13.0
	4H	12.9	13.2	13.3	13.7	14.2	12.9	13.2	13.3	13.7	14.2
	6H	14.5	15.0	15.0	15.3	15.6	14.5	15.0	15.0	15.3	15.6
	8H	15.6	16.0	16.1	16.4	16.7	15.6	16.0	16.1	16.4	16.7
	12H	16.7	17.0	17.2	17.4	17.9	16.7	17.0	17.2	17.4	17.9
8H	4H	13.4	13.8	13.9	14.1	14.5	13.4	13.8	13.9	14.1	14.5
	6H	15.5	15.7	16.0	16.2	16.7	15.5	15.7	16.0	16.2	16.7
	8H	16.8	17.0	17.3	17.5	18.2	16.8	17.0	17.3	17.5	18.2
	12H	18.1	18.3	18.7	18.8	19.4	18.1	18.3	18.7	18.8	19.4
12H	4H	13.5	13.9	14.0	14.3	14.7	13.5	13.9	14.0	14.3	14.7
	6H	15.8	16.0	16.3	16.5	17.2	15.8	16.0	16.3	16.5	17.2
	8H	17.2	17.4	17.8	17.9	18.5	17.2	17.4	17.8	17.9	18.5

Corrected glare indices referring to 797 lm total luminous flux