

Light efficiency:



Output: 316 lm/ft

Light quality:

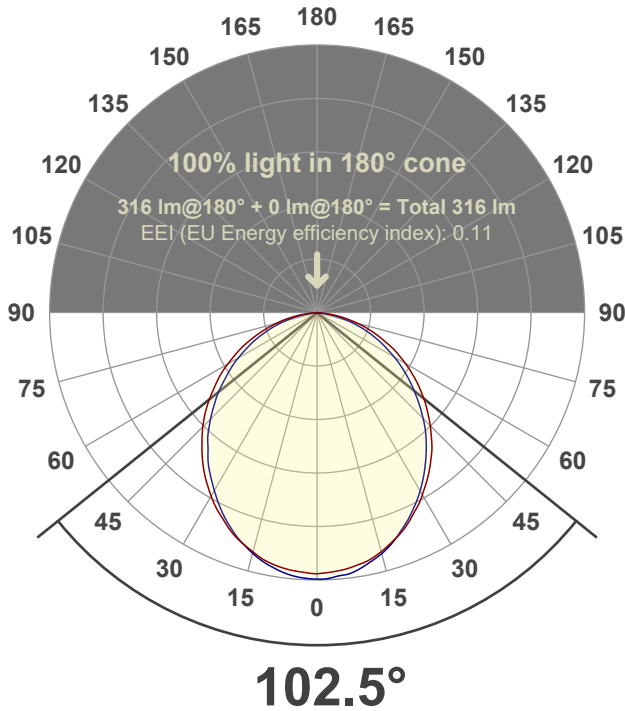


Peak: 125 cd

Power: 4.8 W/ft



Beam angle



Product Name:

SL1DC-LFXX-F4-30k

Product Description:

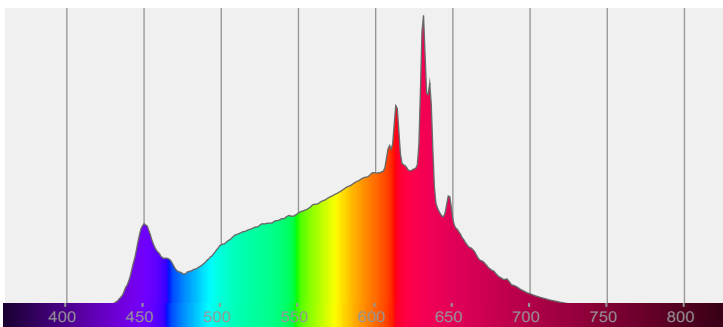
Slice 1" Lensed Continuous Linear Downlight (5W/ft)

Date and time:

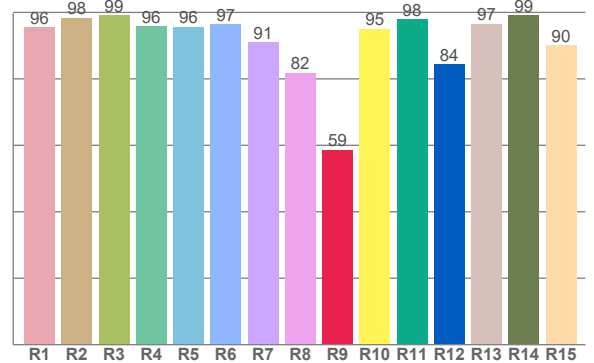
9/6/2022 12:15:16 PM

LUM/ft: 316

Spectra



CRI: 94.2 (R1-R8)

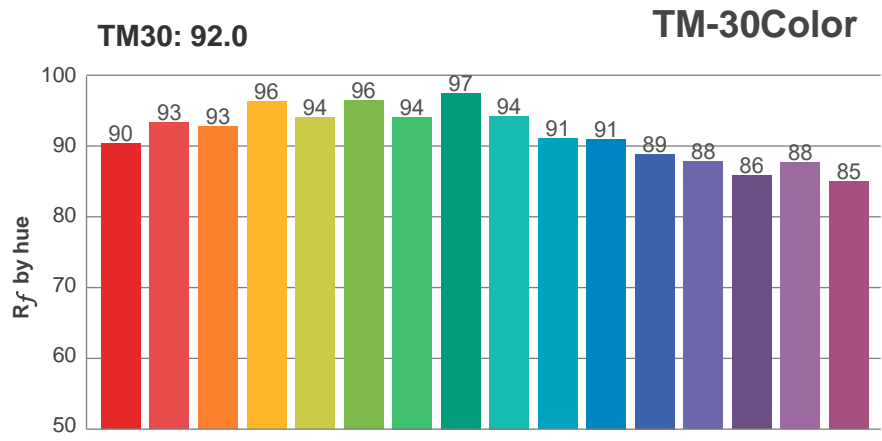


Color parameters

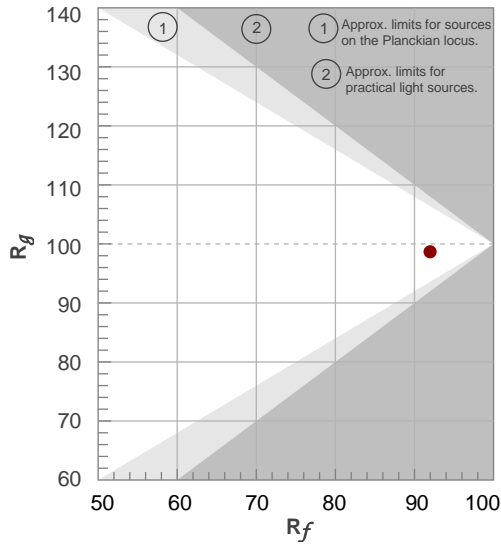
	Color rendering index	Red component	Color fidelity	Color gamut	Color quality scale	Color coordinate cie 1931	Color coordinate cie 1931	Color coordinate	Color coordinate	Color deviation from black body
	CRI	CRI R9	TM30 R _f	TM30 R _g	CQS	x	y	u	v	Δuv
	94.2	58.6	92.0	98.7	92.0	0.433	0.402	0.249	0.347	-0.0003

R_f 92.0
Fidelity index R_f

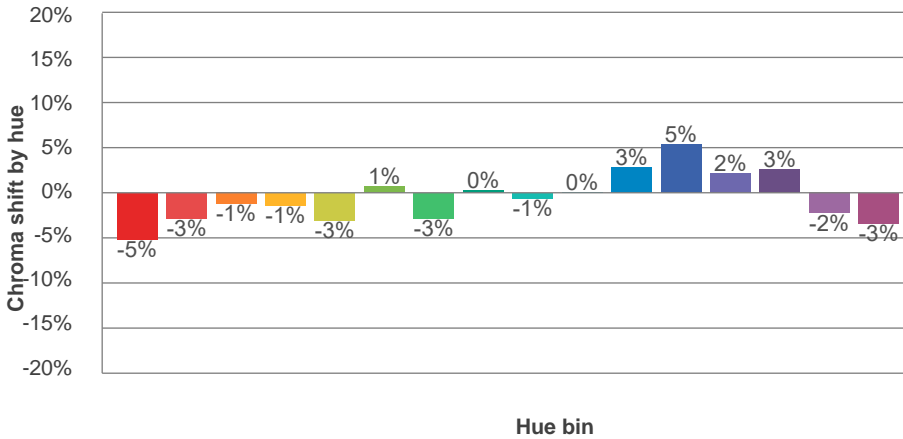
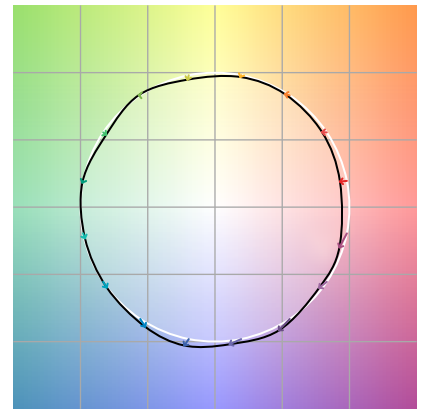
R_g 98.7
Gammut index R_g



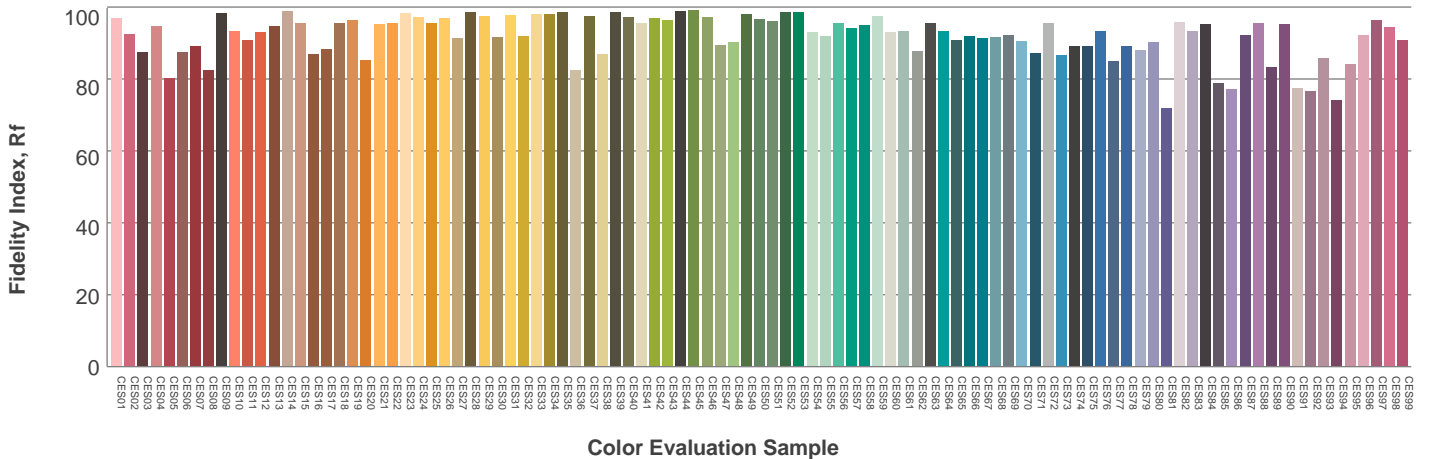
Hue Bin	R_f	Graphic shifts (%)	
		Chroma	Hue
1	90	-5%	1%
2	93	-3%	2%
3	93	-1%	3%
4	96	-1%	0%
5	94	-3%	2%
6	96	1%	1%
7	94	-3%	0%
8	97	0%	1%
9	94	-1%	4%
10	91	0%	5%
11	91	3%	6%
12	89	5%	-2%
13	88	2%	-9%
14	86	3%	-11%
15	88	-2%	-7%
16	85	-3%	-11%



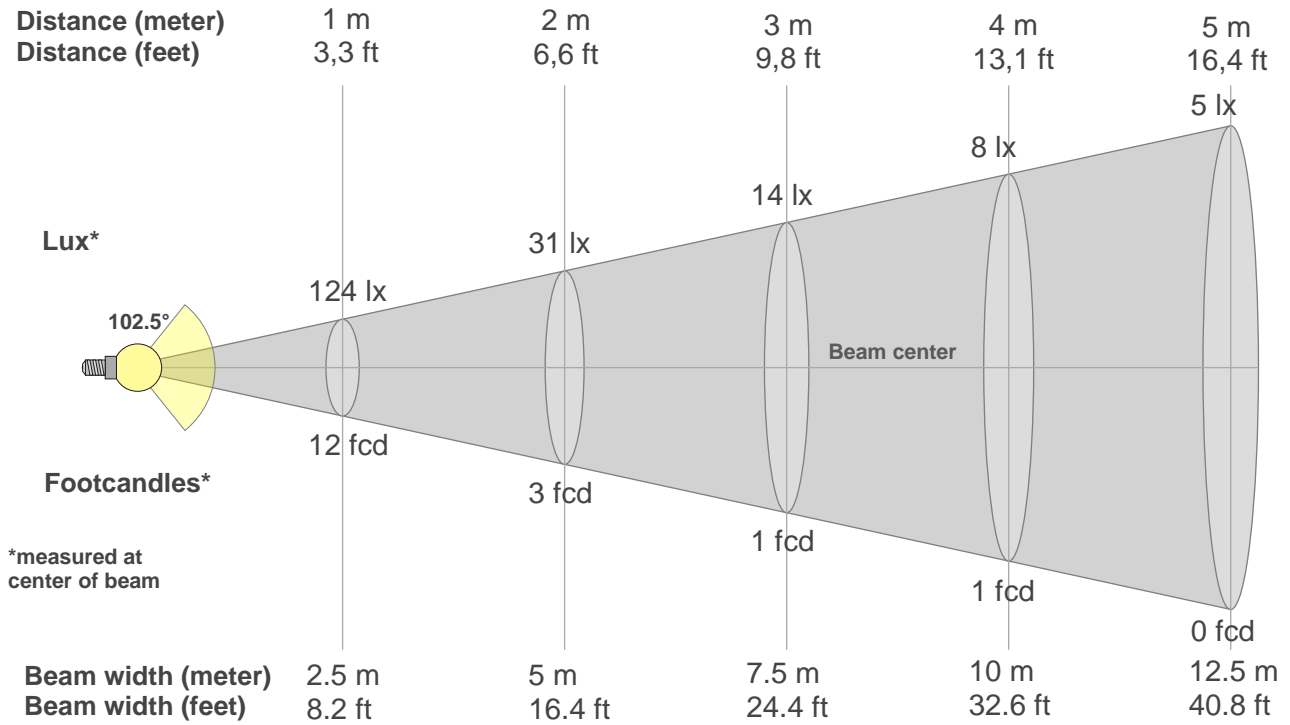
Color vector graphics



Color distortion



Beam details



Beam intensities from 1-20m

1m	2m	3m	4m	5m	6m	7m	8m	9m	10m	11m	12m	13m	14m	15m	16m	17m	18m	19m	20m
3.3ft	6.6ft	9.8ft	13.1ft	16.4ft	19.7ft	23ft	26.2ft	29.5ft	32.8ft	36.1ft	39.4ft	42.7ft	45.9ft	49.2ft	52.5ft	55.8ft	59.1ft	62.3ft	65.6ft
124lx	31lx	14lx	8lx	5lx	3lx	3lx	2lx	2lx	1lx	1lx	1lx	1lx	1lx	1lx	0lx	0lx	0lx	0lx	0lx
11.5fcd	2.9fcd	1.3fcd	0.7fcd	0.5fcd	0.3fcd	0.2fcd	0.2fcd	0.1fcd	0.1fcd	0.1fcd	0.1fcd	0.1fcd	0.1fcd	0.1fcd	0fcd	0fcd	0fcd	0fcd	0fcd

Intensities in 0° c-plane

0°	5°	10°	15°	20°	25°	30°	35°	40°	45°	50°	55°	60°	65°	70°	75°	80°	85°	90°	95°
124	122	120	116	112	106	99	92	84	75	67	58	48	39	30	21	12	5	1	0
100%	98%	97%	94%	90%	85%	80%	74%	68%	61%	54%	47%	39%	32%	24%	17%	10%	4%	0%	0%

Intensities in 90° c-plane

0°	5°	10°	15°	20°	25°	30°	35°	40°	45°	50°	55°	60°	65°	70°	75°	80°	85°	90°	95°
124	124	122	117	111	104	97	89	80	71	61	52	42	33	25	16	9	3	1	0
100%	100%	98%	95%	90%	84%	78%	71%	65%	57%	49%	42%	34%	27%	20%	13%	7%	2%	1%	0%

Intensities in 180° c-plane

0°	5°	10°	15°	20°	25°	30°	35°	40°	45°	50°	55°	60°	65°	70°	75°	80°	85°	90°	95°
124	122	120	116	112	106	100	92	84	76	67	58	49	40	30	21	13	5	1	0
100%	98%	97%	94%	90%	86%	80%	75%	68%	61%	54%	47%	39%	32%	24%	17%	10%	4%	1%	0%

Intensities in 270° c-plane

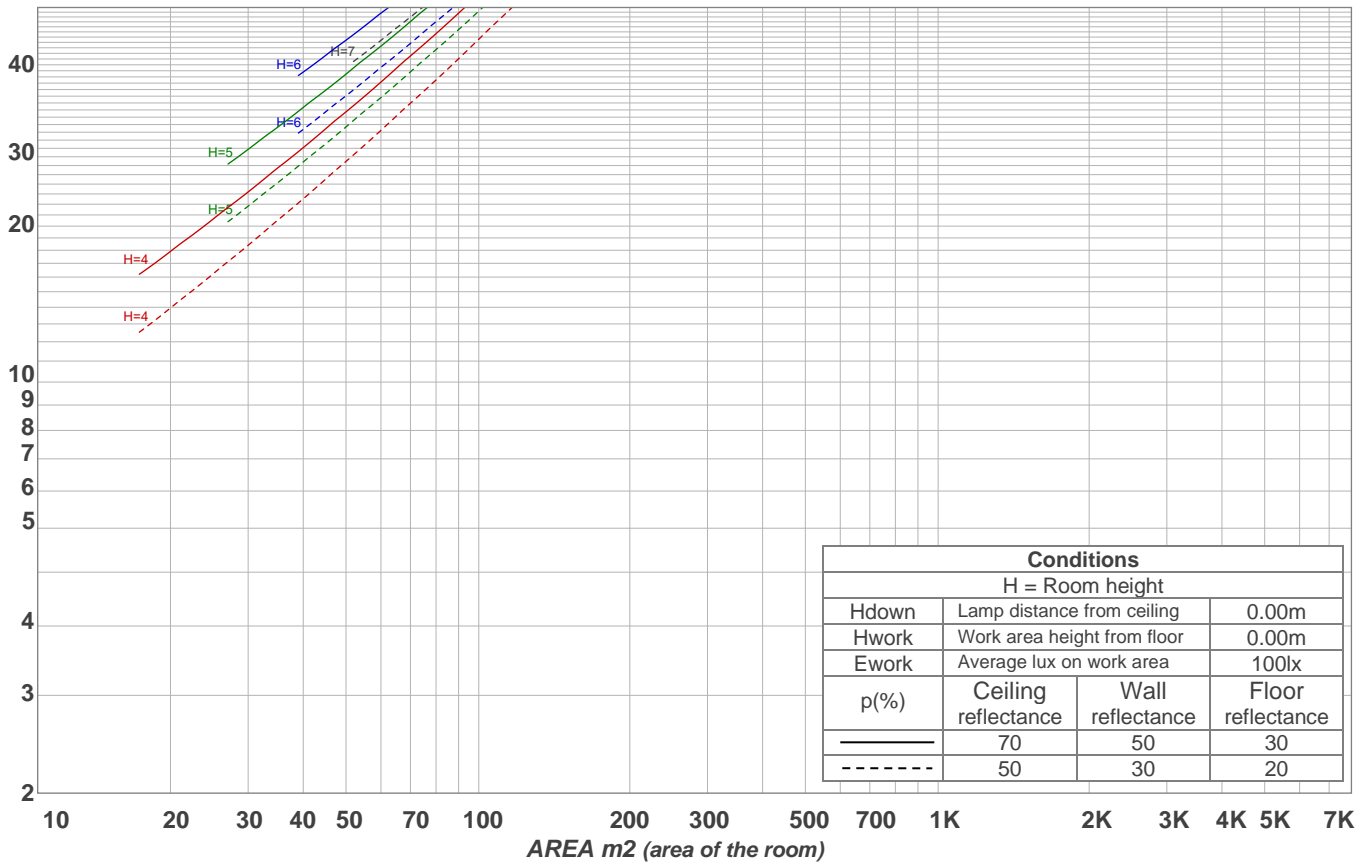
0°	5°	10°	15°	20°	25°	30°	35°	40°	45°	50°	55°	60°	65°	70°	75°	80°	85°	90°	95°
124	124	121	117	111	105	97	89	80	71	62	52	43	34	25	17	9	3	0	0
100%	100%	98%	95%	90%	84%	78%	72%	65%	57%	50%	42%	35%	28%	20%	14%	8%	2%	0%	0%

Beam angle 50%	Field angle 10%	Cutoff angle 2,5%	Intensity ratio in 120° cone	Intensity ratio in 90° cone
102.5°	157.6°	171.5°	80.7%	56.4%

LAMPS (number of lamps) 50

Light planning

Luminaire budgetary diagram



Luminaire budgetary diagram

AREA m2 (area of the room)

Coefficients of Utilization

Ceiling reflectance	80				70				50			30			10			0			
Wall reflectance	70	50	30	10	70	50	30	10	50	30	10	50	30	10	50	30	10	50	30	10	0
Floor reflectance	20	20	20	20	20	20	20	20	20	20	20	20	20	20	20	20	20	20	20	20	0
RCR	(RCR: Room Cavity Ratio)																				
	Room Values are expressed as percentage of Lumens delivered to the task surface																				
0	119	119	119	119	116	116	116	116	111	111	111	106	106	106	102	102	102	100	100	100	100
1	109	104	100	97	106	102	98	95	98	95	92	94	92	89	90	88	87	84	84	84	84
2	99	91	85	79	97	90	83	78	86	81	76	83	78	75	80	76	73	71	71	71	71
3	91	81	73	66	88	79	72	66	76	70	64	73	68	63	71	66	62	60	60	60	60
4	83	72	63	56	81	70	62	56	68	61	55	65	59	54	63	58	54	52	52	52	52
5	77	64	55	49	75	63	55	48	61	54	48	59	52	47	57	51	47	45	45	45	45
6	71	58	49	43	69	57	49	42	55	48	42	53	47	42	52	46	41	39	39	39	39
7	66	53	44	38	64	52	44	38	50	43	37	49	42	37	47	41	37	35	35	35	35
8	61	48	40	34	60	47	39	34	46	39	34	45	38	33	44	38	33	31	31	31	31
9	57	44	36	31	56	44	36	30	42	35	30	41	35	30	40	34	30	28	28	28	28
10	54	41	33	28	53	40	33	28	39	32	28	38	32	27	37	32	27	26	26	26	26

Zonal Lumen Summary

0°-10°	10°-20°	20°-30°	30°-40°	40°-50°	50°-60°	60°-70°	70°-80°	80°-90°
11.7 lm	32.9 lm	48.4 lm	56.5 lm	56.5 lm	49.1 lm	36.1 lm	19.9 lm	4.96 lm
90°-100°	100°-110°	110°-120°	120°-130°	130°-140°	140°-150°	150°-160°	160°-170°	170°-180°
0.000 lm	0.000 lm	0.000 lm	0.000 lm	0.000 lm	0.000 lm	0.000 lm	0.000 lm	0.000 lm

End of Report