

Light efficiency:



Output: 2069 lm

Light quality:

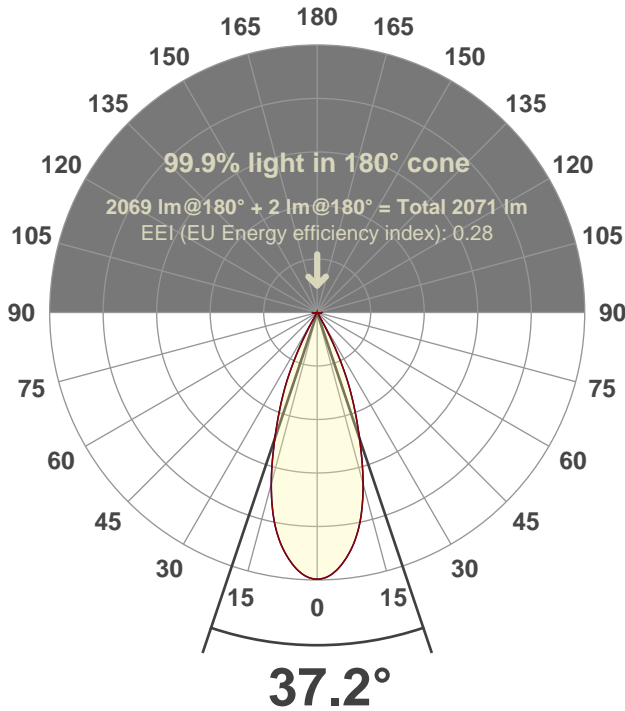


Peak: 5306 cd

Power: 30.0 W



Beam angle



Test number:

CR4D-R-DR-C28-30k-40 (GR-CZ20-FL-RD)

Luminaire Model:

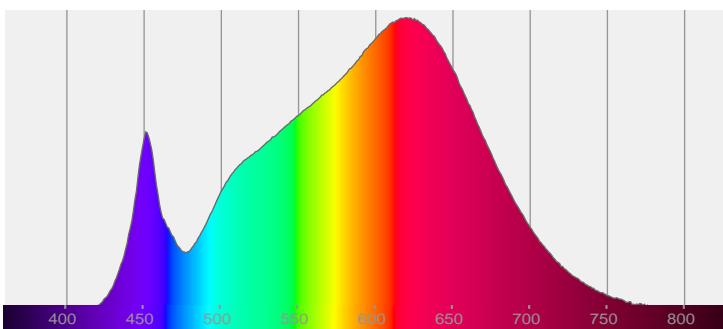
Core 4" Round Deep Regress C28 30k 40°

Date and time:

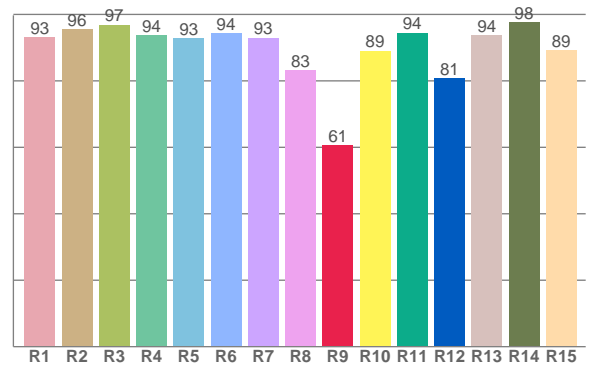
6/14/2017 11:54:40 AM

LUM: 2069

Spectra



CRI: 92.8 (R1-R8)



Color parameters

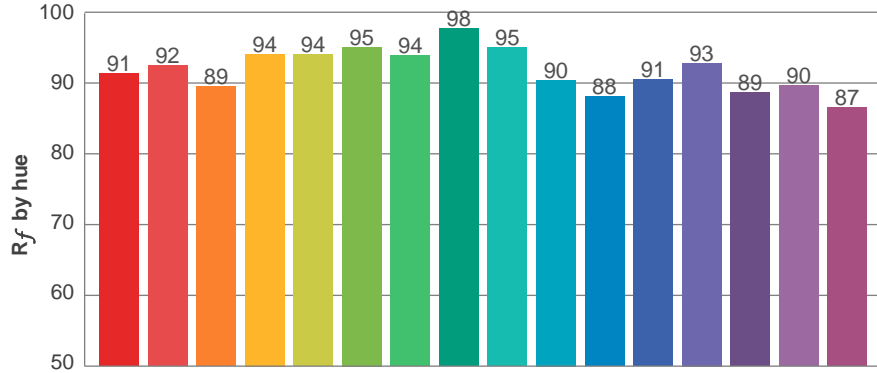
	Color rendering index	Red component	Color fidelity	Color gamut	Color quality scale	Color coordinate cie 1931	Color coordinate cie 1931	Color coordinate	Color coordinate	Color deviation from black body
	CRI	CRI R9	TM30 R _f	TM30 R _g	CQS	x	y	u	v	Δuv
	92.8	60.5	91.9	100.2	91.0	0.428	0.400	0.247	0.346	-0.0002

R_f 91.9
Fidelity index R_f

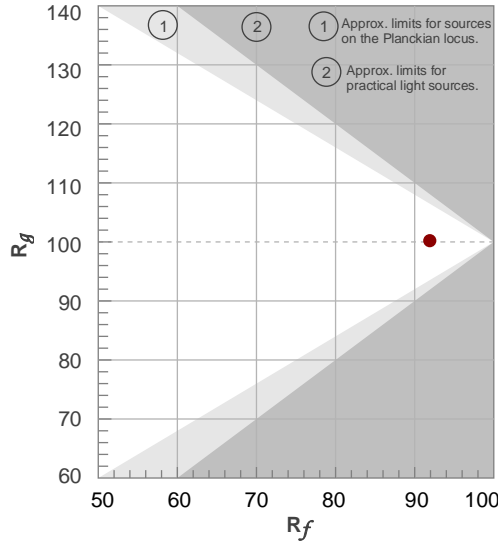
R_g 100.2
Gammut index R_g

TM30: 91.9

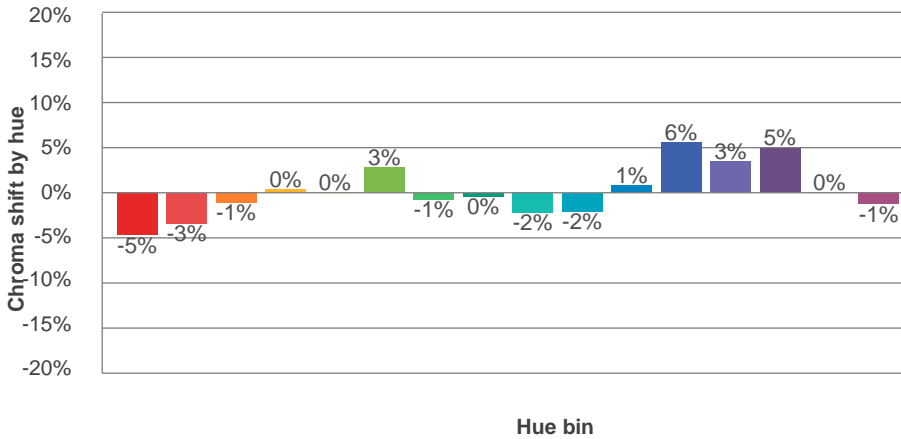
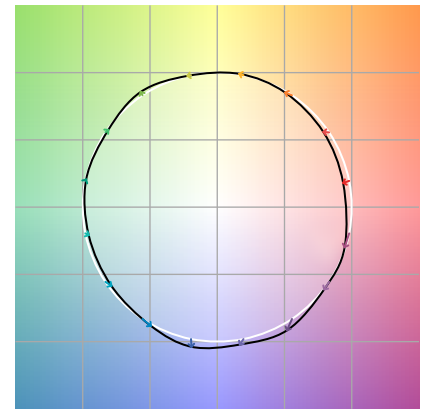
TM-30Color



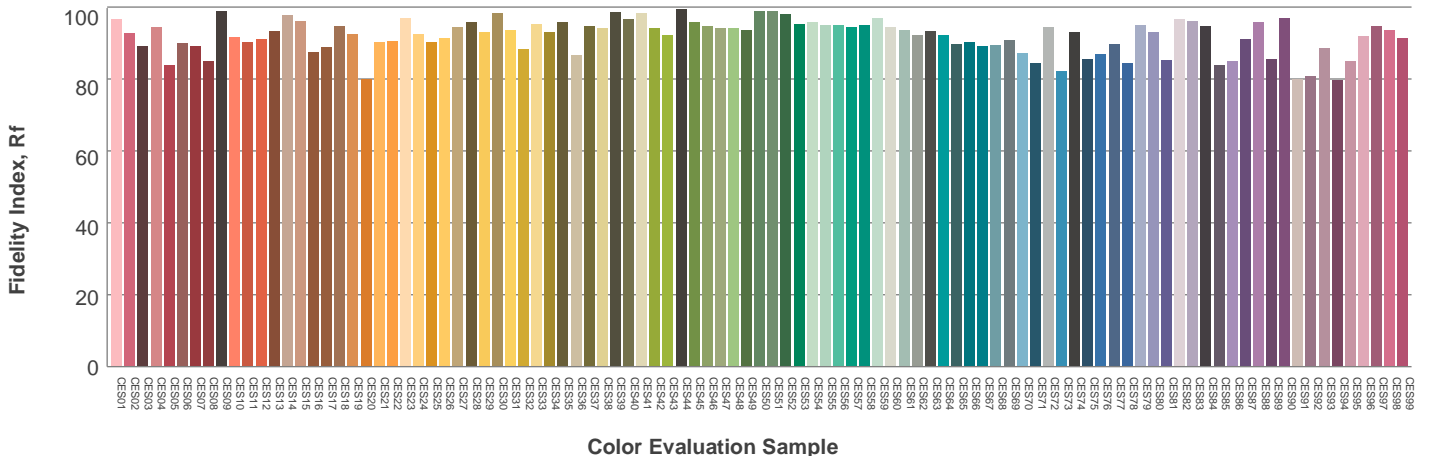
Hue Bin	R_f	Graphic shifts (%)	
		Chroma	Hue
1	91	-5%	-1%
2	92	-3%	3%
3	89	-1%	5%
4	94	0%	3%
5	94	0%	3%
6	95	3%	0%
7	94	-1%	-3%
8	98	0%	-1%
9	95	-2%	2%
10	90	-2%	5%
11	88	1%	8%
12	91	6%	2%
13	93	3%	-3%
14	89	5%	-8%
15	90	0%	-7%
16	87	-1%	-11%



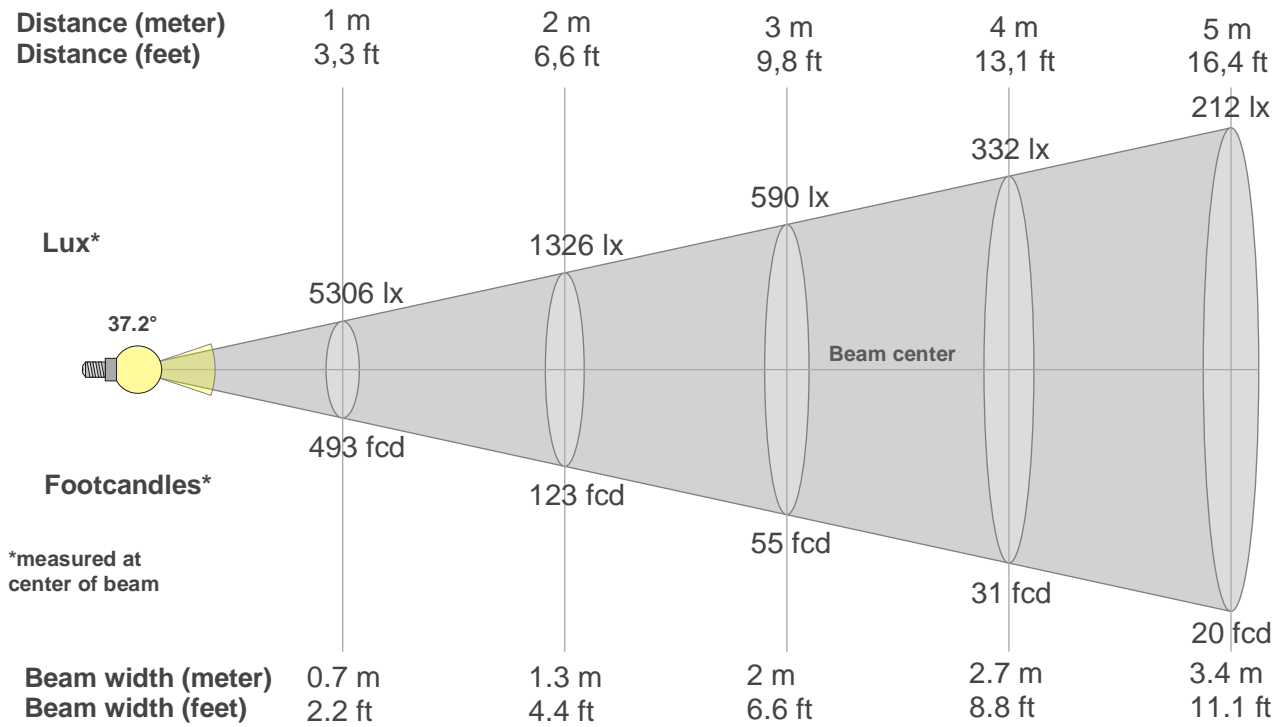
Color vector graphics



Color distortion



Beam details



Beam intensities from 1-20m

1m	2m	3m	4m	5m	6m	7m	8m	9m	10m	11m	12m	13m	14m	15m	16m	17m	18m	19m	20m
3.3ft	6.6ft	9.8ft	13.1ft	16.4ft	19.7ft	23ft	26.2ft	29.5ft	32.8ft	36.1ft	39.4ft	42.7ft	45.9ft	49.2ft	52.5ft	55.8ft	59.1ft	62.3ft	65.6ft
5306lx	1326lx	590lx	332lx	212lx	147lx	108lx	83lx	66lx	53lx	44lx	37lx	31lx	27lx	24lx	21lx	18lx	16lx	15lx	13lx
492.9fcd	123.2fcd	54.8fcd	30.8fcd	19.7fcd	13.7fcd	10.1fcd	7.7fcd	6.1fcd	4.9fcd	4.1fcd	3.4fcd	2.9fcd	2.5fcd	2.2fcd	1.9fcd	1.7fcd	1.5fcd	1.4fcd	1.2fcd

Intensities in 0° c-plane

0°	2°	4°	6°	8°	10°	12°	14°	16°	18°	20°	22°	24°	26°	28°	30°	32°	34°	36°	38°
5306	5271	5164	4996	4781	4512	4176	3765	3298	2797	2331	1904	1483	1025	593	258	99	70	59	52
100%	99%	97%	94%	90%	85%	79%	71%	62%	53%	44%	36%	28%	19%	11%	5%	2%	1%	1%	1%

Intensities in 90° c-plane

0°	2°	4°	6°	8°	10°	12°	14°	16°	18°	20°	22°	24°	26°	28°	30°	32°	34°	36°	38°
5306	5271	5164	4996	4781	4512	4176	3765	3298	2797	2331	1904	1483	1025	593	258	99	70	59	52
100%	99%	97%	94%	90%	85%	79%	71%	62%	53%	44%	36%	28%	19%	11%	5%	2%	1%	1%	1%

Intensities in 180° c-plane

0°	2°	4°	6°	8°	10°	12°	14°	16°	18°	20°	22°	24°	26°	28°	30°	32°	34°	36°	38°
5306	5271	5164	4996	4781	4512	4176	3765	3298	2797	2331	1904	1483	1025	593	258	99	70	59	52
100%	99%	97%	94%	90%	85%	79%	71%	62%	53%	44%	36%	28%	19%	11%	5%	2%	1%	1%	1%

Intensities in 270° c-plane

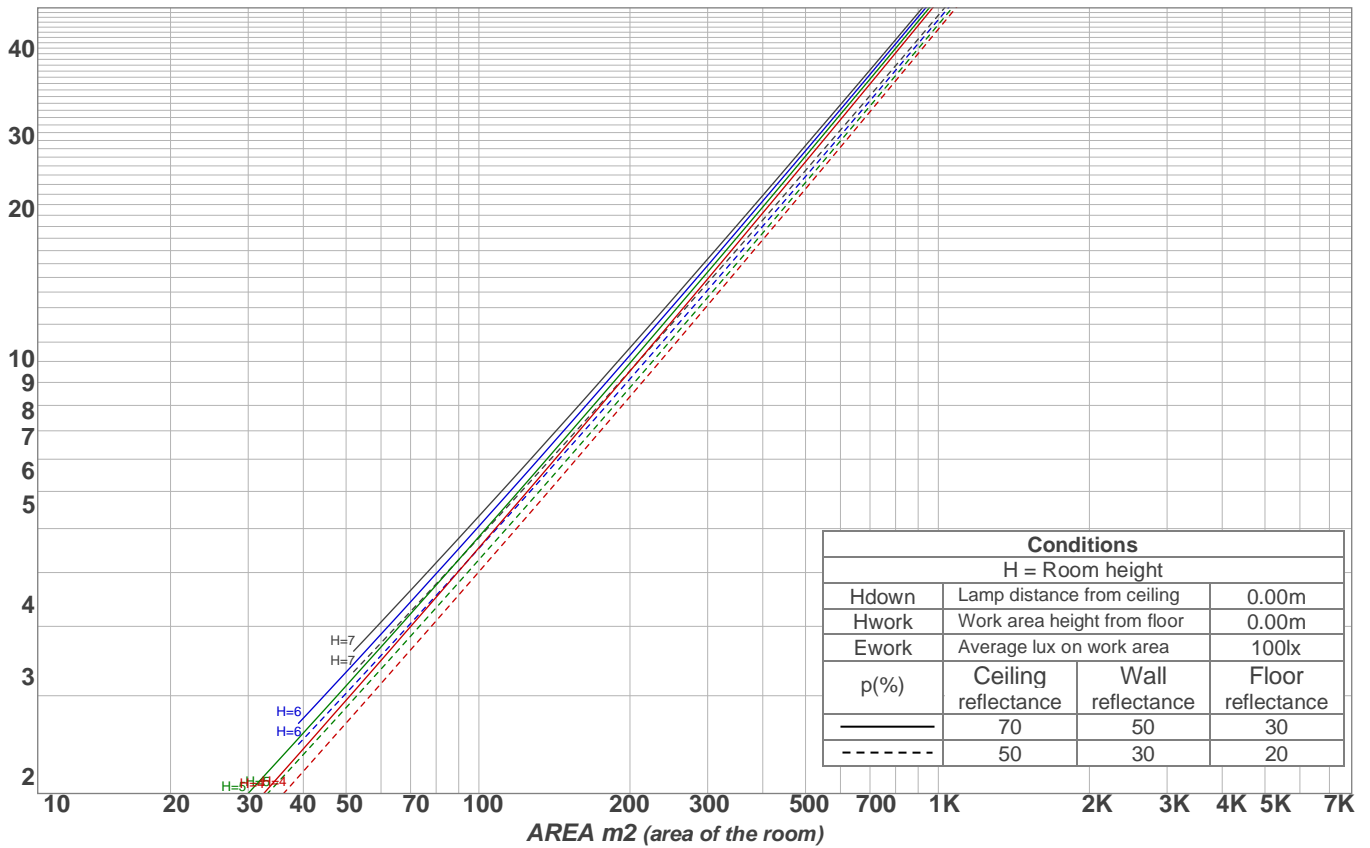
0°	2°	4°	6°	8°	10°	12°	14°	16°	18°	20°	22°	24°	26°	28°	30°	32°	34°	36°	38°
5306	5271	5164	4996	4781	4512	4176	3765	3298	2797	2331	1904	1483	1025	593	258	99	70	59	52
100%	99%	97%	94%	90%	85%	79%	71%	62%	53%	44%	36%	28%	19%	11%	5%	2%	1%	1%	1%

Beam angle 50%	Field angle 10%	Cutoff angle 2,5%	Intensity ratio in 120° cone	Intensity ratio in 90° cone
37.2°	56.6°	62.5°	99.5%	98.4%

Light planning

Luminaire budgetary diagram

LAMPS (number of lamps)
50



Luminaire budgetary diagram
AREA m2 (area of the room)
Coefficients of Utilization

Ceiling reflectance	80				70				50			30			10			0			
Wall reflectance	70	50	30	10	70	50	30	10	50	30	10	50	30	10	50	30	10	50	30	10	0
Floor reflectance	20	20	20	20	20	20	20	20	20	20	20	20	20	20	20	20	20	20	20	20	0
RCR	(RCR: Room Cavity Ratio)																				
	Room Values are expressed as percentage of Lumens delivered to the task surface																				
0	119	119	119	119	116	116	116	116	111	111	111	106	106	106	102	102	102	100	100	100	100
1	115	112	110	108	112	110	108	107	106	105	103	102	101	100	99	98	97	96	96	96	96
2	110	106	103	100	108	105	102	99	102	99	97	99	97	95	96	94	93	92	92	92	92
3	106	101	97	94	104	100	96	93	97	94	92	95	92	90	93	91	89	88	88	88	88
4	102	96	92	89	101	95	91	88	93	90	87	91	89	86	90	87	85	84	84	84	84
5	99	92	88	84	97	91	87	84	90	86	83	88	85	83	87	84	82	81	81	81	81
6	95	88	84	80	94	88	83	80	86	83	80	85	82	79	84	81	79	77	77	77	77
7	92	85	80	77	91	84	80	77	83	79	76	82	79	76	81	78	76	75	75	75	75
8	89	82	77	74	88	81	77	74	80	76	73	79	76	73	78	75	73	72	72	72	72
9	86	79	74	71	85	78	74	71	77	73	71	77	73	70	76	73	70	69	69	69	69
10	83	76	71	68	83	76	71	68	75	71	68	74	71	68	73	70	68	67	67	67	67

Zonal Lumen Summary

0°-10°	10°-20°	20°-30°	30°-40°	40°-50°	50°-60°	60°-70°	70°-80°	80°-90°
467 lm	956 lm	550 lm	49.7 lm	24.5 lm	12.4 lm	5.82 lm	1.97 lm	1.09 lm
90°-100°	100°-110°	110°-120°	120°-130°	130°-140°	140°-150°	150°-160°	160°-170°	170°-180°
0.000 lm	0.000 lm	0.000 lm	0.000 lm	0.000 lm	0.000 lm	0.000 lm	0.000 lm	0.000 lm

UGR

p Ceiling		70	70	50	50	30	70	70	50	50	30
p Walls		50	30	50	30	30	50	30	50	30	30
p Floor		20	20	20	20	20	20	20	20	20	20
Room size X Y		Viewing direction at right angles to lamp axis					Viewing direction parallel to lamp axis				
2H	2H	21.8	22.2	21.8	22.4	22.6	21.8	22.2	21.8	22.4	22.6
	3H	21.8	22.5	22.2	22.7	22.8	21.8	22.5	22.2	22.7	22.8
	4H	21.9	22.5	22.2	22.7	22.9	21.9	22.5	22.2	22.7	22.9
	6H	22.0	22.4	22.2	22.7	23.1	22.0	22.4	22.2	22.7	23.1
	8H	22.0	22.4	22.3	22.7	23.1	22.0	22.4	22.3	22.7	23.1
	12H	22.0	22.4	22.3	22.8	23.2	22.0	22.4	22.3	22.8	23.2
4H	2H	21.7	22.3	22.1	22.5	22.7	21.7	22.3	22.1	22.5	22.7
	3H	22.0	22.5	22.4	22.8	23.3	22.0	22.5	22.4	22.8	23.3
	4H	22.0	22.4	22.4	22.9	23.4	22.0	22.4	22.4	22.9	23.4
	6H	22.1	22.6	22.6	22.9	23.2	22.1	22.6	22.6	22.9	23.2
	8H	22.1	22.6	22.6	22.9	23.2	22.1	22.6	22.6	22.9	23.2
	12H	22.2	22.5	22.7	22.9	23.4	22.2	22.5	22.7	22.9	23.4
8H	4H	21.9	22.4	22.5	22.7	23.1	21.9	22.4	22.5	22.7	23.1
	6H	22.1	22.4	22.6	22.8	23.4	22.1	22.4	22.6	22.8	23.4
	8H	22.2	22.4	22.7	23.0	23.6	22.2	22.4	22.7	23.0	23.6
	12H	22.4	22.6	23.0	23.1	23.7	22.4	22.6	23.0	23.1	23.7
12H	4H	21.9	22.2	22.4	22.6	23.1	21.9	22.2	22.4	22.6	23.1
	6H	22.1	22.3	22.6	22.9	23.5	22.1	22.3	22.6	22.9	23.5
	8H	22.2	22.4	22.8	22.9	23.5	22.2	22.4	22.8	22.9	23.5
Corrected glare indices referring to 2069 lm total luminous flux											