

Light efficiency:



Output: 2006 lm

Light quality:

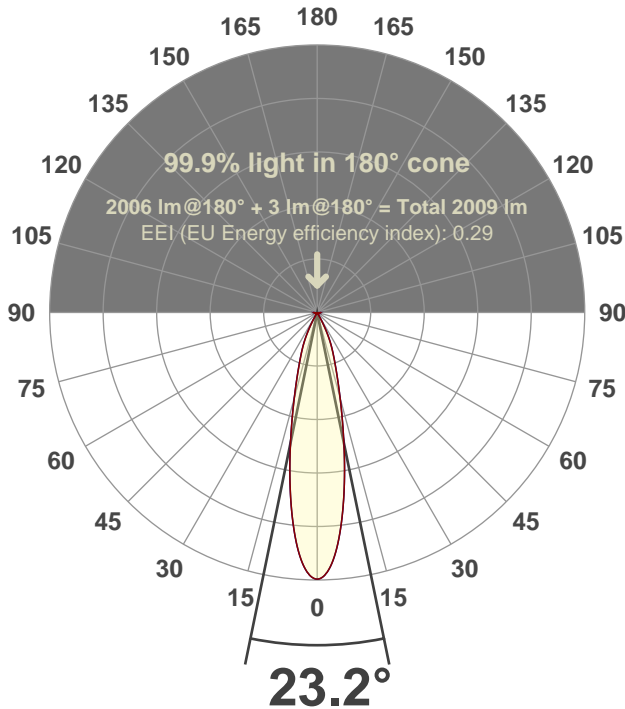


Peak: 9013 cd

Power: 30.1 W



Beam angle



Test number:

CR4D-R-DR-C28-30k-24° (4001-CZ20-NF)

Luminaire Model:

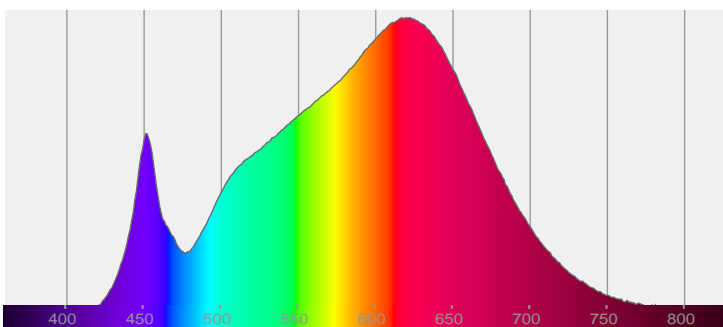
Core 4" Round Deep Regress C28 30k 24°

Date and time:

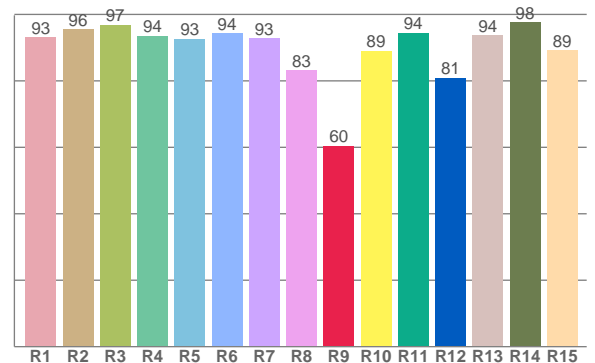
6/14/2017 12:25:18 PM

LUM: 2006

Spectra



CRI: 92.8 (R1-R8)



Color parameters

	Color rendering index	Red component	Color fidelity	Color gamut	Color quality scale	Color coordinate cie 1931	Color coordinate cie 1931	Color coordinate	Color coordinate	Color deviation from black body
	CRI	CRI R9	TM30 R <sub>f</sub>	TM30 R <sub>g</sub>	CQS	x	y	u	v	Δuv
	92.8	60.5	91.9	100.3	91.0	0.429	0.400	0.247	0.346	-0.0003

# R<sub>f</sub> 91.9

Fidelity index R<sub>f</sub>

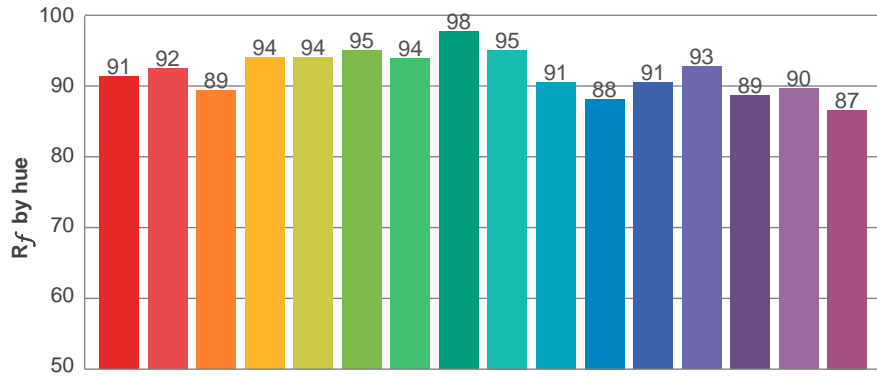
---

# R<sub>g</sub> 100.3

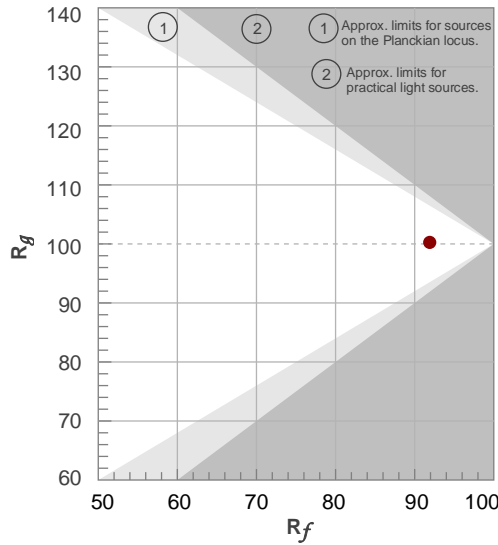
Gammut index R<sub>g</sub>

TM30: 91.9

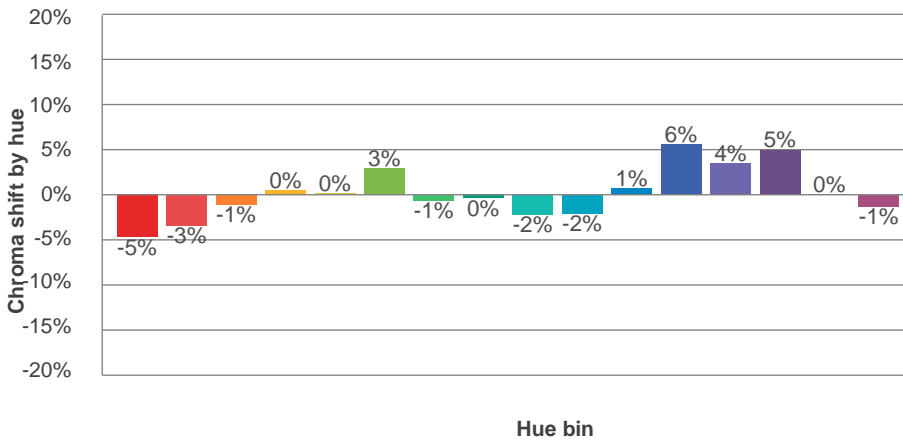
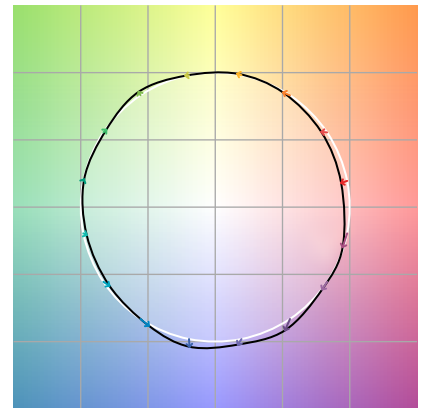
TM-30Color



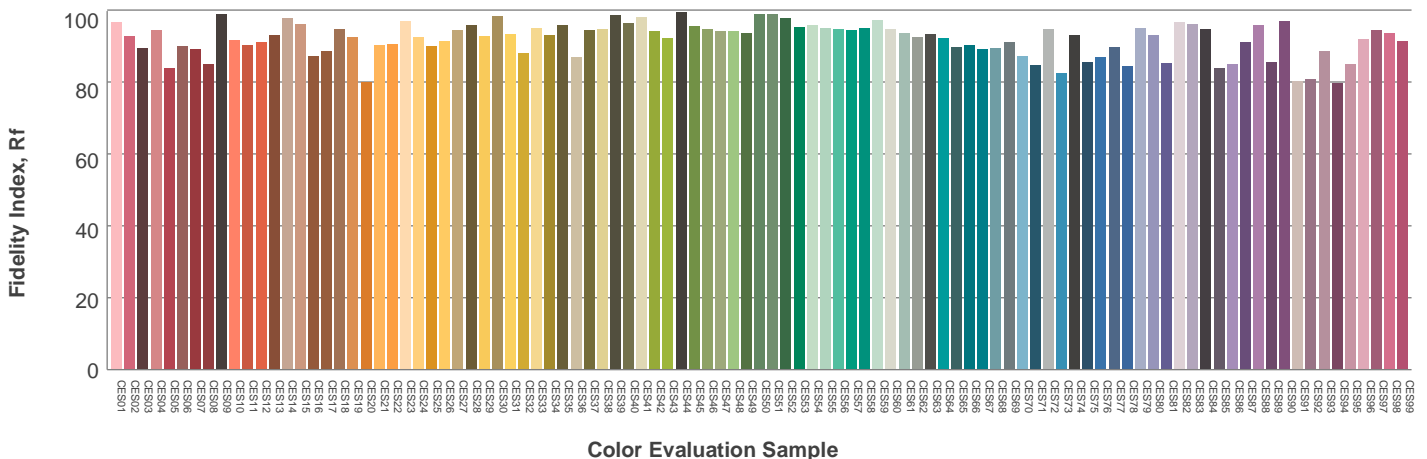
Hue Bin	R <sub>f</sub>	Graphic shifts (%)	
		Chroma	Hue
1	91	-5%	-1%
2	92	-3%	3%
3	89	-1%	5%
4	94	0%	3%
5	94	0%	3%
6	95	3%	0%
7	94	-1%	-3%
8	98	0%	-1%
9	95	-2%	2%
10	91	-2%	5%
11	88	1%	8%
12	91	6%	2%
13	93	4%	-3%
14	89	5%	-8%
15	90	0%	-7%
16	87	-1%	-11%



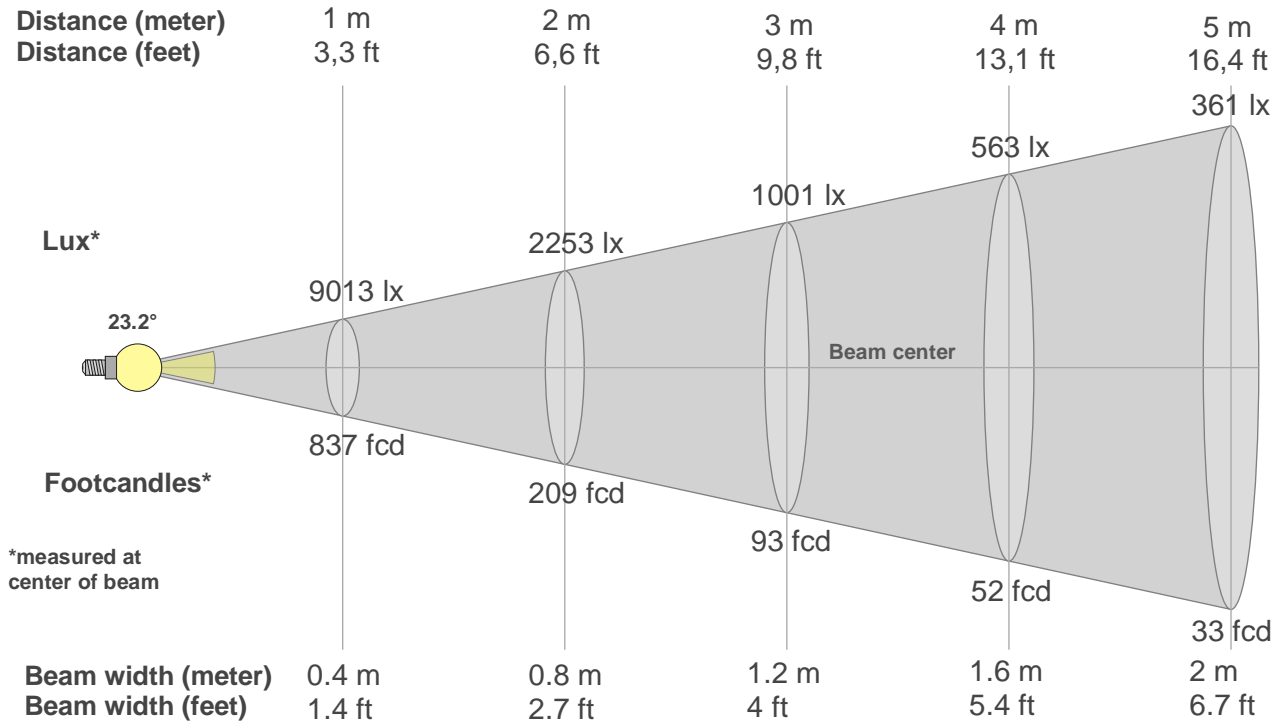
Color vector graphics



Color distortion



Beam details



Beam intensities from 1-20m

1m	2m	3m	4m	5m	6m	7m	8m	9m	10m	11m	12m	13m	14m	15m	16m	17m	18m	19m	20m
3.3ft	6.6ft	9.8ft	13.1ft	16.4ft	19.7ft	23ft	26.2ft	29.5ft	32.8ft	36.1ft	39.4ft	42.7ft	45.9ft	49.2ft	52.5ft	55.8ft	59.1ft	62.3ft	65.6ft
9013lx	2253lx	1001lx	563lx	361lx	250lx	184lx	141lx	111lx	90lx	74lx	63lx	53lx	46lx	40lx	35lx	31lx	28lx	25lx	23lx
837.3fcd	209.3fcd	93fcd	52.3fcd	33.5fcd	23.3fcd	17.1fcd	13.1fcd	10.3fcd	8.4fcd	6.9fcd	5.8fcd	5fcd	4.3fcd	3.7fcd	3.3fcd	2.9fcd	2.6fcd	2.3fcd	2.1fcd

Intensities in 0° c-plane

0°	2°	4°	6°	8°	10°	12°	14°	16°	18°	20°	22°	24°	26°	28°	30°	32°	34°	36°	38°
9013	8819	8280	7436	6418	5337	4298	3401	2674	2125	1709	1383	1089	773	459	212	88	62	52	43
100%	98%	92%	83%	71%	59%	48%	38%	30%	24%	19%	15%	12%	9%	5%	2%	1%	1%	1%	0%

Intensities in 90° c-plane

0°	2°	4°	6°	8°	10°	12°	14°	16°	18°	20°	22°	24°	26°	28°	30°	32°	34°	36°	38°
9013	8819	8280	7436	6418	5337	4298	3401	2674	2125	1709	1383	1089	773	459	212	88	62	52	43
100%	98%	92%	83%	71%	59%	48%	38%	30%	24%	19%	15%	12%	9%	5%	2%	1%	1%	1%	0%

Intensities in 180° c-plane

0°	2°	4°	6°	8°	10°	12°	14°	16°	18°	20°	22°	24°	26°	28°	30°	32°	34°	36°	38°
9013	8819	8280	7436	6418	5337	4298	3401	2674	2125	1709	1383	1089	773	459	212	88	62	52	43
100%	98%	92%	83%	71%	59%	48%	38%	30%	24%	19%	15%	12%	9%	5%	2%	1%	1%	1%	0%

Intensities in 270° c-plane

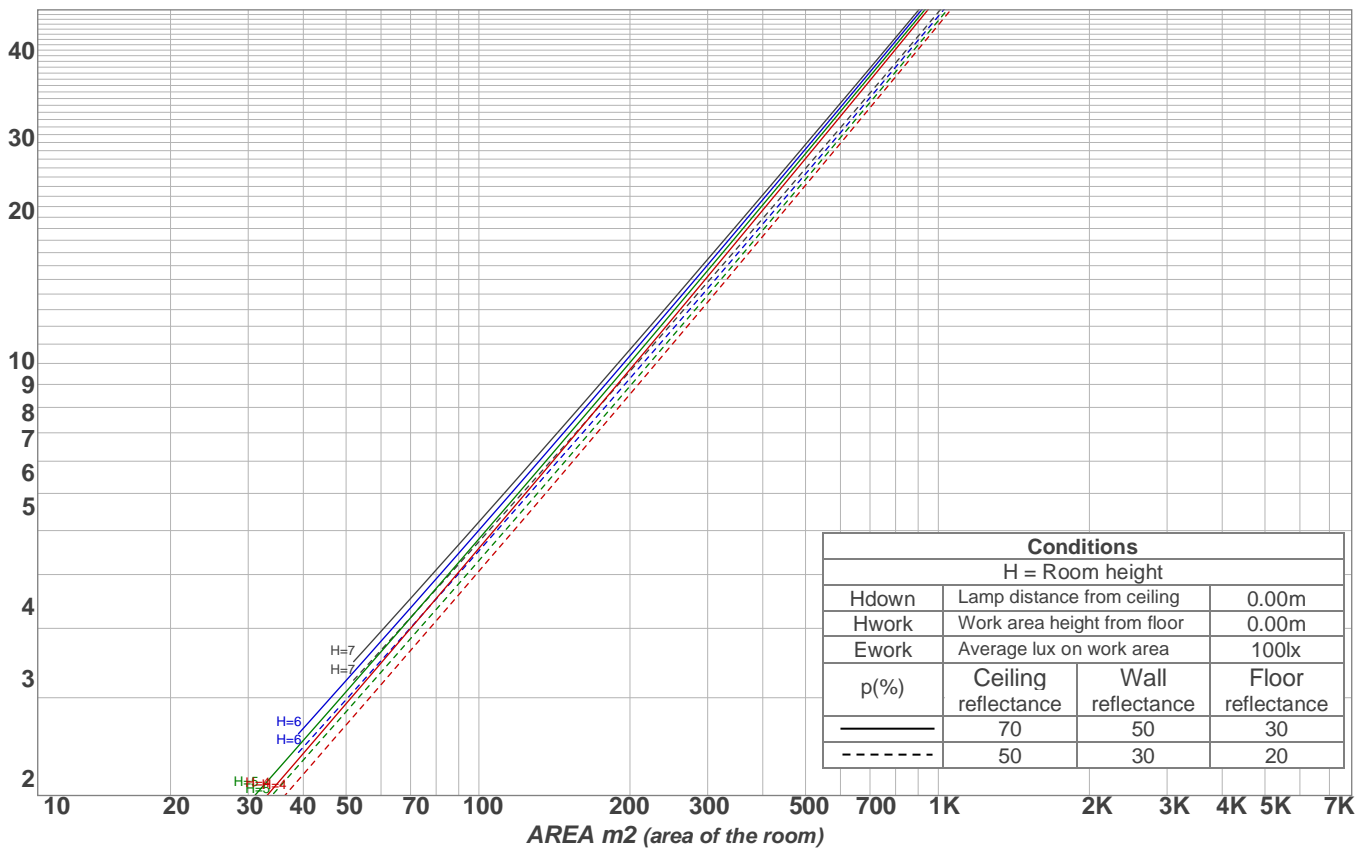
0°	2°	4°	6°	8°	10°	12°	14°	16°	18°	20°	22°	24°	26°	28°	30°	32°	34°	36°	38°
9013	8819	8280	7436	6418	5337	4298	3401	2674	2125	1709	1383	1089	773	459	212	88	62	52	43
100%	98%	92%	83%	71%	59%	48%	38%	30%	24%	19%	15%	12%	9%	5%	2%	1%	1%	1%	0%

Beam angle 50%	Field angle 10%	Cutoff angle 2,5%	Intensity ratio in 120° cone	Intensity ratio in 90° cone
23.2°	50.4°	59.7°	99.4%	98.5%

Light planning

Luminaire budgetary diagram

LAMPS (number of lamps)  
50



Luminaire budgetary diagram  
AREA m2 (area of the room)  
Coefficients of Utilization

Ceiling reflectance	80				70				50			30			10			0
Wall reflectance	70	50	30	10	70	50	30	10	50	30	10	50	30	10	50	30	10	0
Floor reflectance	20	20	20	20	20	20	20	20	20	20	20	20	20	20	20	20	20	0
<b>RCR</b>	<b>(RCR: Room Cavity Ratio)</b>																	
	Room Values are expressed as percentage of Lumens delivered to the task surface																	
0	119	119	119	119	116	116	116	116	111	111	111	106	106	106	102	102	102	100
1	115	113	111	109	112	111	109	107	107	105	104	103	102	101	100	99	98	96
2	111	107	104	102	109	106	103	100	102	100	98	100	98	96	97	96	94	93
3	107	103	99	96	106	101	98	95	99	96	94	96	94	92	94	92	91	90
4	104	98	94	91	102	97	94	91	95	92	90	93	91	89	92	90	88	86
5	101	95	90	87	99	94	90	87	92	89	86	91	88	85	89	87	85	84
6	98	91	87	84	96	91	87	84	89	86	83	88	85	83	87	84	82	81
7	95	88	84	81	94	88	84	81	86	83	80	85	82	80	84	82	80	78
8	92	85	81	78	91	85	81	78	84	80	78	83	80	77	82	79	77	76
9	90	83	79	76	89	82	78	76	81	78	75	81	77	75	80	77	75	74
10	87	80	76	73	86	80	76	73	79	76	73	79	75	73	78	75	73	72

Zonal Lumen Summary

0°-10°	10°-20°	20°-30°	30°-40°	40°-50°	50°-60°	60°-70°	70°-80°	80°-90°
668 lm	849 lm	409 lm	43.1 lm	17.9 lm	10.8 lm	4.37 lm	2.47 lm	1.94 lm
90°-100°	100°-110°	110°-120°	120°-130°	130°-140°	140°-150°	150°-160°	160°-170°	170°-180°
0.000 lm	0.000 lm	0.000 lm	0.000 lm	0.000 lm	0.000 lm	0.000 lm	0.000 lm	0.000 lm

UGR

p Ceiling		70	70	50	50	30	70	70	50	50	30
p Walls		50	30	50	30	30	50	30	50	30	30
p Floor		20	20	20	20	20	20	20	20	20	20
Room size X    Y		Viewing direction at right angles to lamp axis					Viewing direction parallel to lamp axis				
2H	2H	20.6	21.0	20.6	21.2	21.3	20.6	21.0	20.6	21.2	21.3
	3H	20.6	21.2	21.0	21.4	21.5	20.6	21.2	21.0	21.4	21.5
	4H	20.7	21.3	21.1	21.5	21.7	20.7	21.3	21.1	21.5	21.7
	6H	21.0	21.4	21.3	21.7	22.1	21.0	21.4	21.3	21.7	22.1
	8H	21.2	21.6	21.5	21.9	22.3	21.2	21.6	21.5	21.9	22.3
	12H	21.4	21.8	21.7	22.2	22.6	21.4	21.8	21.7	22.2	22.6
4H	2H	20.4	21.0	20.8	21.2	21.5	20.4	21.0	20.8	21.2	21.5
	3H	20.8	21.2	21.1	21.6	22.0	20.8	21.2	21.1	21.6	22.0
	4H	21.0	21.4	21.4	21.8	22.3	21.0	21.4	21.4	21.8	22.3
	6H	21.3	21.8	21.8	22.1	22.4	21.3	21.8	21.8	22.1	22.4
	8H	21.6	22.0	22.1	22.3	22.7	21.6	22.0	22.1	22.3	22.7
	12H	22.0	22.3	22.5	22.7	23.1	22.0	22.3	22.5	22.7	23.1
8H	4H	21.0	21.4	21.5	21.7	22.1	21.0	21.4	21.5	21.7	22.1
	6H	21.6	21.8	22.1	22.3	22.8	21.6	21.8	22.1	22.3	22.8
	8H	22.0	22.2	22.5	22.8	23.4	22.0	22.2	22.5	22.8	23.4
	12H	22.6	22.8	23.2	23.3	23.9	22.6	22.8	23.2	23.3	23.9
12H	4H	21.0	21.3	21.5	21.7	22.2	21.0	21.3	21.5	21.7	22.2
	6H	21.7	21.9	22.2	22.4	23.0	21.7	21.9	22.2	22.4	23.0
	8H	22.2	22.3	22.8	22.8	23.4	22.2	22.3	22.8	22.8	23.4
Corrected glare indices referring to 2006 lm total luminous flux											