

Light efficiency:



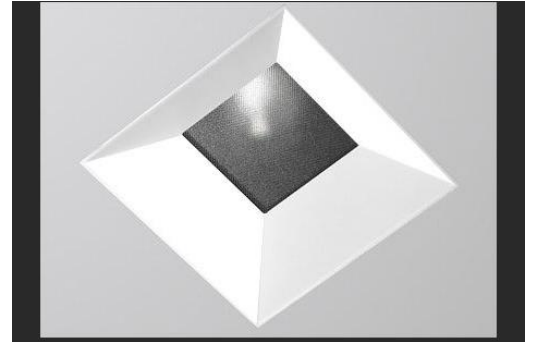
Output: 1068 lm

Light quality:

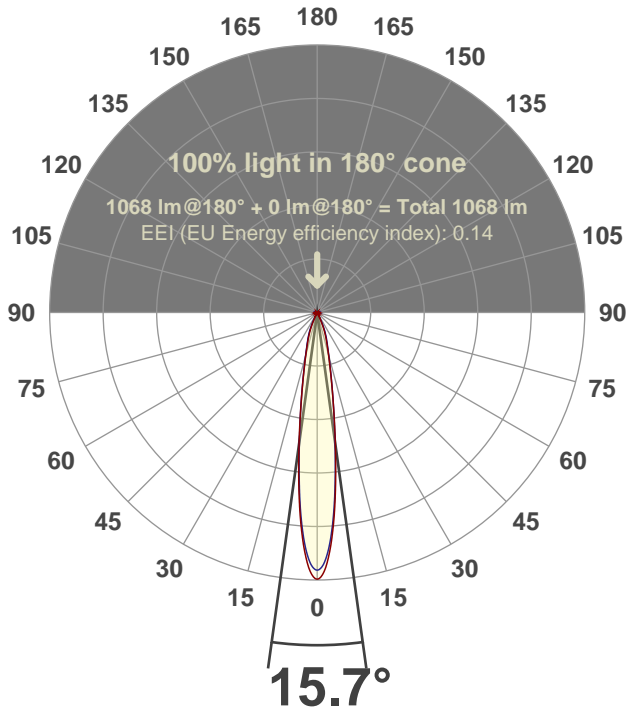


Peak: 7642 cd

Power: 15.0 W



Beam angle



Test number:

CR4D-S-DR-C14-30k-15 (1009-CZ20-SP)

Luminaire Model:

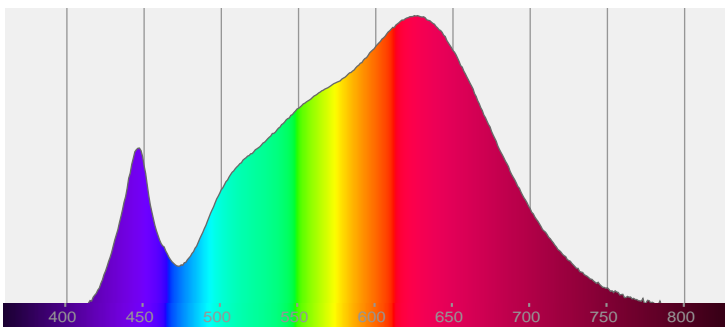
Core 4" Square Deep Regress C14 30K 15°

Date and time:

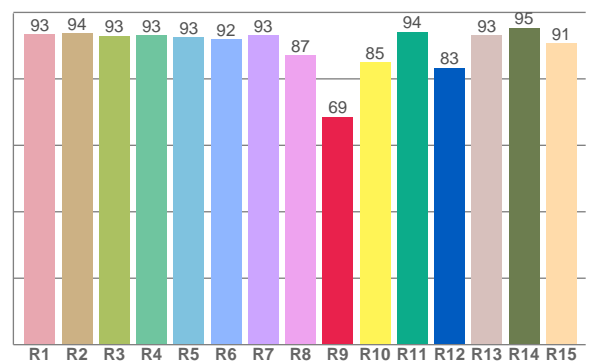
3/8/2017 4:59:36 PM

LUM: 1068

Spectra



CRI: 92.3 (R1-R8)



Color parameters

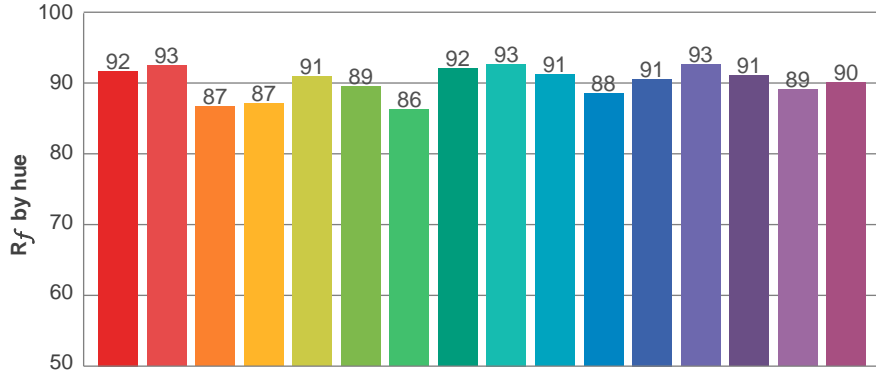
	Color rendering index	Red component	Color fidelity	Color gamut	Color quality scale	Color coordinate cie 1931	Color coordinate cie 1931	Color coordinate	Color coordinate	Color deviation from black body
	CRI	CRI R9	TM30 R _f	TM30 R _g	CQS	x	y	u	v	Δuv
	92.3	68.6	90.2	103.1	90.1	0.429	0.400	0.247	0.346	-0.0005

R_f 90.2
Fidelity index R_f

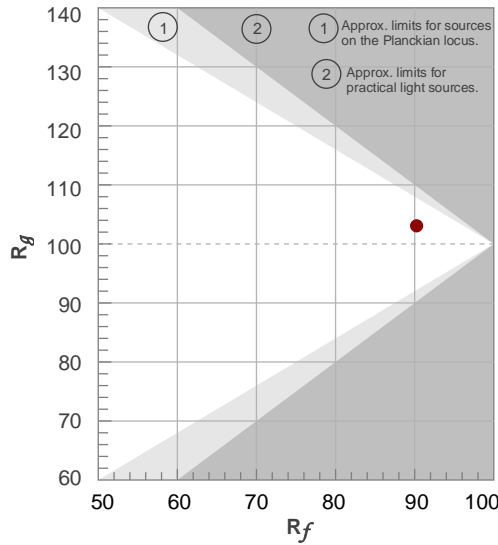
R_g 103.1
Gammut index R_g

TM30: 90.2

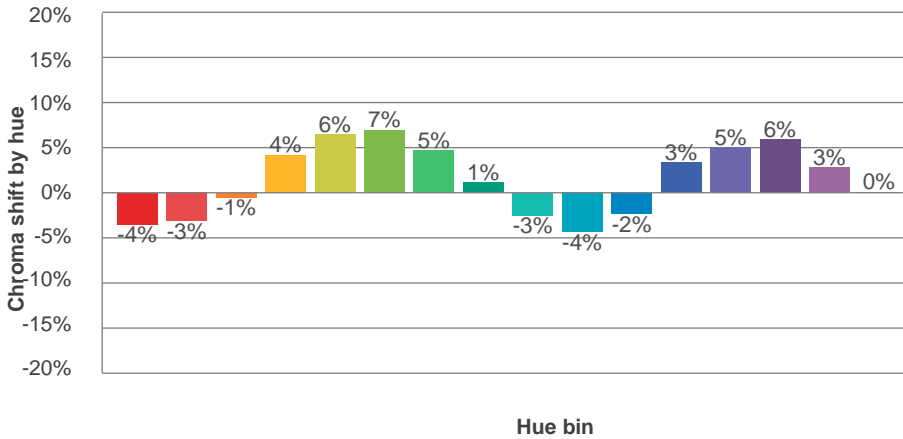
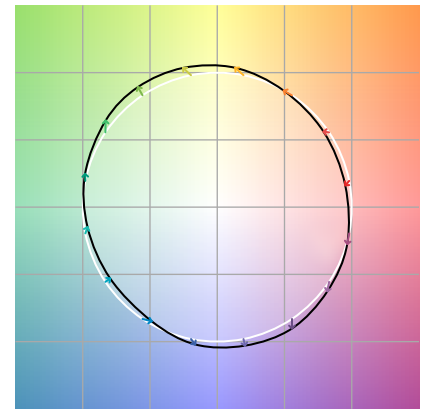
TM-30Color



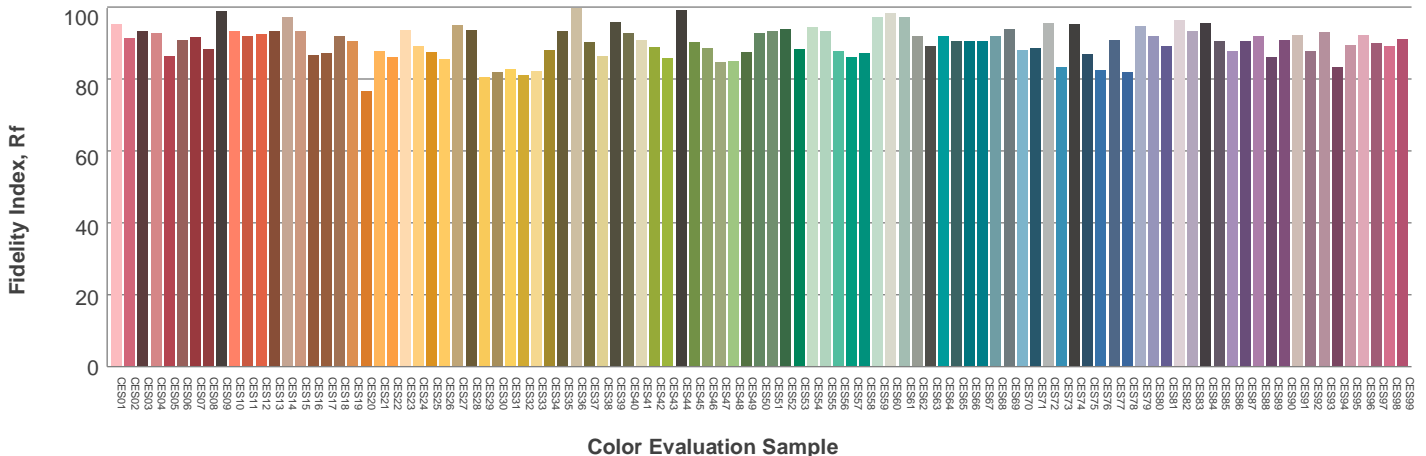
Hue Bin	R_f	Graphic shifts (%)	
		Chroma	Hue
1	92	-4%	-3%
2	93	-3%	3%
3	87	-1%	7%
4	87	4%	7%
5	91	6%	5%
6	89	7%	-1%
7	86	5%	-7%
8	92	1%	-5%
9	93	-3%	-4%
10	91	-4%	0%
11	88	-2%	7%
12	91	3%	4%
13	93	5%	0%
14	91	6%	-4%
15	89	3%	-7%
16	90	0%	-8%



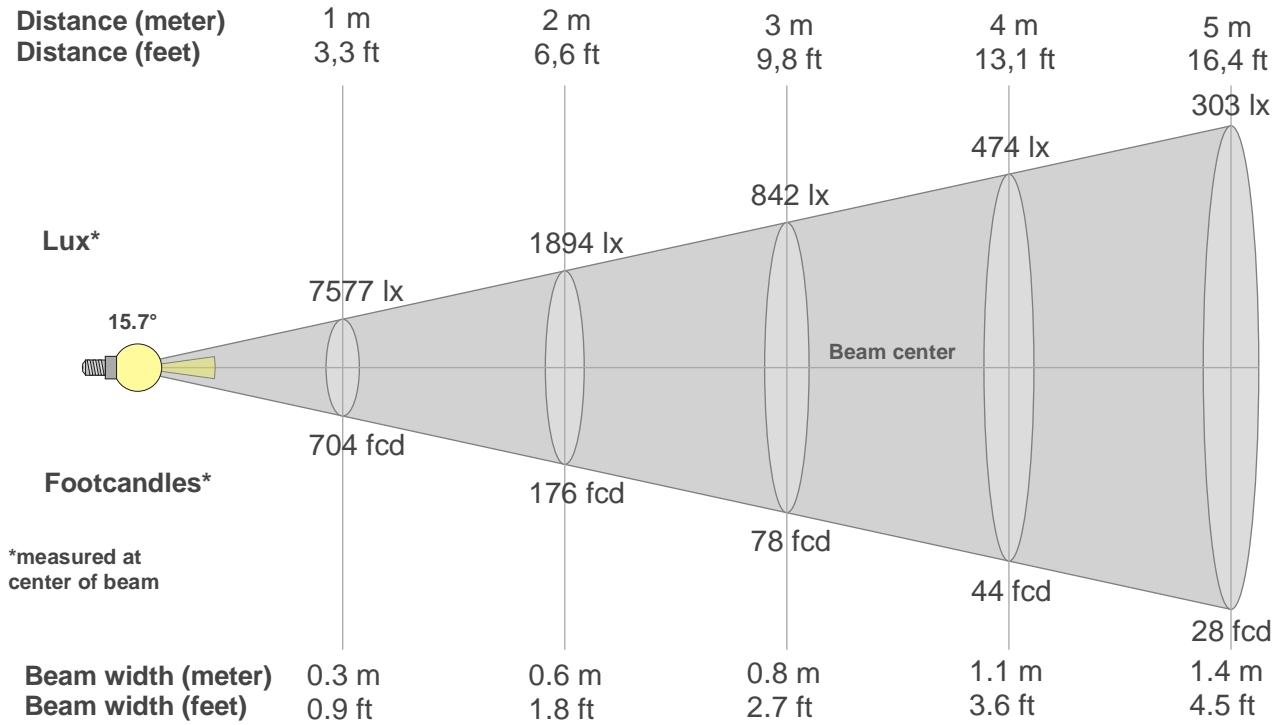
Color vector graphics



Color distortion



Beam details



Beam intensities from 1-20m

1m	2m	3m	4m	5m	6m	7m	8m	9m	10m	11m	12m	13m	14m	15m	16m	17m	18m	19m	20m
3.3ft	6.6ft	9.8ft	13.1ft	16.4ft	19.7ft	23ft	26.2ft	29.5ft	32.8ft	36.1ft	39.4ft	42.7ft	45.9ft	49.2ft	52.5ft	55.8ft	59.1ft	62.3ft	65.6ft
7577lx	1894lx	842lx	474lx	303lx	210lx	155lx	118lx	94lx	76lx	63lx	53lx	45lx	39lx	34lx	30lx	26lx	23lx	21lx	19lx
703.9fcd	176fcd	78.2fcd	44fcd	28.2fcd	19.6fcd	14.4fcd	11fcd	8.7fcd	7fcd	5.8fcd	4.9fcd	4.2fcd	3.6fcd	3.1fcd	2.7fcd	2.4fcd	2.2fcd	1.9fcd	1.8fcd

Intensities in 0° c-plane

0°	2°	4°	6°	8°	10°	12°	14°	16°	18°	20°	22°	24°	26°	28°	30°	32°	34°	36°	38°
7577	7283	6322	5034	3732	2687	1954	1459	1123	887	698	524	342	178	65	21	18	19	18	14
100%	96%	83%	66%	49%	35%	26%	19%	15%	12%	9%	7%	5%	2%	1%	0%	0%	0%	0%	0%

Intensities in 90° c-plane

0°	2°	4°	6°	8°	10°	12°	14°	16°	18°	20°	22°	24°	26°	28°	30°	32°	34°	36°	38°
7577	7065	6181	4919	3659	2673	1965	1478	1154	934	764	606	426	245	104	28	21	21	18	13
100%	93%	82%	65%	48%	35%	26%	20%	15%	12%	10%	8%	6%	3%	1%	0%	0%	0%	0%	0%

Intensities in 180° c-plane

0°	2°	4°	6°	8°	10°	12°	14°	16°	18°	20°	22°	24°	26°	28°	30°	32°	34°	36°	38°
7577	7283	6322	5034	3732	2687	1954	1459	1123	887	698	524	342	178	65	21	18	19	18	14
100%	96%	83%	66%	49%	35%	26%	19%	15%	12%	9%	7%	5%	2%	1%	0%	0%	0%	0%	0%

Intensities in 270° c-plane

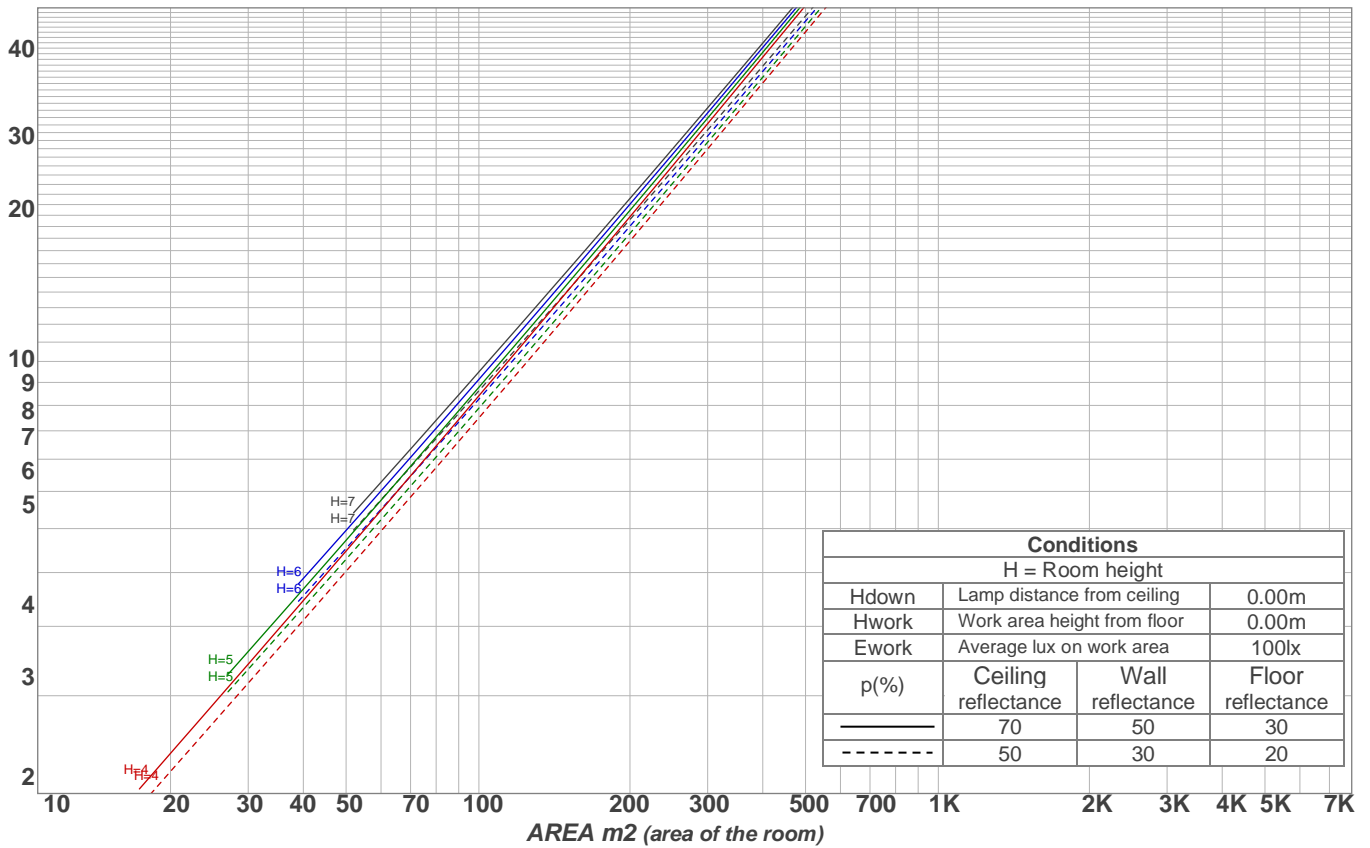
0°	2°	4°	6°	8°	10°	12°	14°	16°	18°	20°	22°	24°	26°	28°	30°	32°	34°	36°	38°
7577	7065	6181	4919	3659	2673	1965	1478	1154	934	764	606	426	245	104	28	21	21	18	13
100%	93%	82%	65%	48%	35%	26%	20%	15%	12%	10%	8%	6%	3%	1%	0%	0%	0%	0%	0%

Beam angle 50%	Field angle 10%	Cutoff angle 2,5%	Intensity ratio in 120° cone	Intensity ratio in 90° cone
15.7°	40.6°	59.2°	99.6%	99.3%

Light planning

Luminaire budgetary diagram

LAMPS (number of lamps)
50



Luminaire budgetary diagram
AREA m2 (area of the room)
Coefficients of Utilization

Ceiling reflectance	80				70				50			30			10			0	
Wall reflectance	70	50	30	10	70	50	30	10	50	30	10	50	30	10	50	30	10	0	
Floor reflectance	20	20	20	20	20	20	20	20	20	20	20	20	20	20	20	20	20	20	0
RCR	(RCR: Room Cavity Ratio)																		
	Room Values are expressed as percentage of Lumens delivered to the task surface																		
0	119	119	119	119	116	116	116	116	111	111	111	106	106	106	102	102	102	100	
1	115	113	111	109	113	111	109	108	107	106	104	103	102	101	100	99	98	97	
2	111	108	105	102	109	106	103	101	103	101	99	100	98	97	97	96	95	94	
3	108	103	100	97	106	102	99	96	100	97	95	97	95	93	95	93	92	91	
4	105	99	95	92	103	98	95	92	96	93	91	94	92	90	93	91	89	88	
5	102	96	92	89	100	95	91	88	93	90	88	92	89	87	91	88	86	85	
6	99	93	89	86	98	92	88	85	91	87	85	89	87	84	88	86	84	83	
7	96	90	86	83	95	89	85	83	88	85	82	87	84	82	86	84	81	80	
8	94	87	83	80	93	87	83	80	86	82	80	85	82	80	84	81	79	78	
9	91	85	81	78	90	84	81	78	84	80	78	83	80	78	82	79	77	76	
10	89	83	79	76	88	82	78	76	81	78	76	81	78	76	80	77	75	75	

Zonal Lumen Summary

0°-10°	10°-20°	20°-30°	30°-40°	40°-50°	50°-60°	60°-70°	70°-80°	80°-90°
437 lm	378 lm	203 lm	41.8 lm	2.69 lm	2.18 lm	2.01 lm	1.31 lm	0.941 lm
90°-100°	100°-110°	110°-120°	120°-130°	130°-140°	140°-150°	150°-160°	160°-170°	170°-180°
0.000 lm	0.000 lm	0.000 lm	0.000 lm	0.000 lm	0.000 lm	0.000 lm	0.000 lm	0.000 lm

UGR

p Ceiling		70	70	50	50	30	70	70	50	50	30
p Walls		50	30	50	30	30	50	30	50	30	30
p Floor		20	20	20	20	20	20	20	20	20	20
Room size X Y		Viewing direction at right angles to lamp axis					Viewing direction parallel to lamp axis				
2H	2H	17.5	17.9	17.6	18.1	18.3	17.6	18.0	17.7	18.2	18.4
	3H	17.6	18.1	17.9	18.3	18.5	17.7	18.3	18.1	18.5	18.7
	4H	17.7	18.2	18.1	18.4	18.7	17.9	18.5	18.3	18.7	18.9
	6H	17.9	18.3	18.2	18.6	19.0	18.3	18.7	18.5	19.0	19.3
	8H	18.0	18.4	18.3	18.8	19.1	18.4	18.9	18.7	19.2	19.6
	12H	18.2	18.6	18.5	19.0	19.4	18.7	19.1	19.0	19.4	19.8
4H	2H	17.3	17.8	17.7	18.0	18.3	17.4	17.9	17.8	18.1	18.4
	3H	17.6	18.1	18.0	18.4	18.8	17.8	18.2	18.2	18.6	19.0
	4H	17.8	18.2	18.2	18.6	19.1	18.1	18.4	18.5	18.9	19.4
	6H	18.1	18.5	18.6	18.8	19.2	18.5	18.9	19.0	19.3	19.6
	8H	18.2	18.7	18.8	19.0	19.4	18.8	19.2	19.3	19.5	19.9
	12H	18.6	18.9	19.1	19.3	19.7	19.1	19.5	19.6	19.9	20.3
8H	4H	17.8	18.3	18.3	18.6	18.9	18.1	18.5	18.6	18.8	19.2
	6H	18.3	18.5	18.8	19.0	19.5	18.7	19.0	19.2	19.4	19.9
	8H	18.6	18.8	19.1	19.4	20.0	19.2	19.4	19.7	19.9	20.5
	12H	19.2	19.3	19.8	19.8	20.4	19.7	19.9	20.3	20.4	21.0
12H	4H	17.8	18.1	18.3	18.5	19.0	18.1	18.4	18.6	18.8	19.2
	6H	18.4	18.6	18.9	19.1	19.7	18.8	19.0	19.3	19.5	20.1
	8H	18.7	18.9	19.3	19.4	20.0	19.2	19.4	19.8	19.9	20.5
Corrected glare indices referring to 1068 lm total luminous flux											