

Light efficiency:



Output: 1119 lm

Light quality:

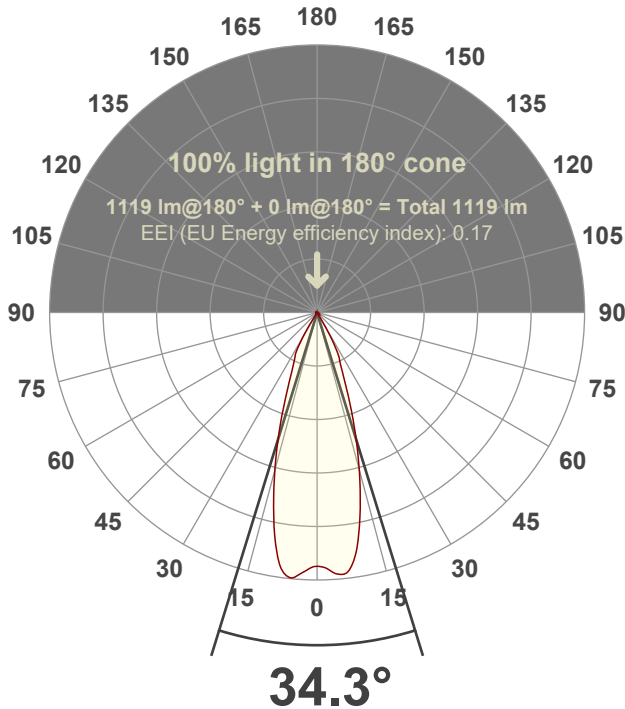


Peak: 3011 cd

Power: 13.8 W



Beam angle



Test number:

MSC-H-M-C14-30k-35°

Luminaire Model:

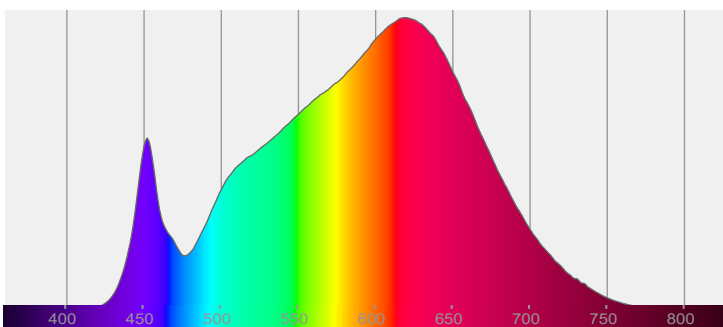
Mosaic Medium Accent Head-M-C14-30k-35°

Date and time:

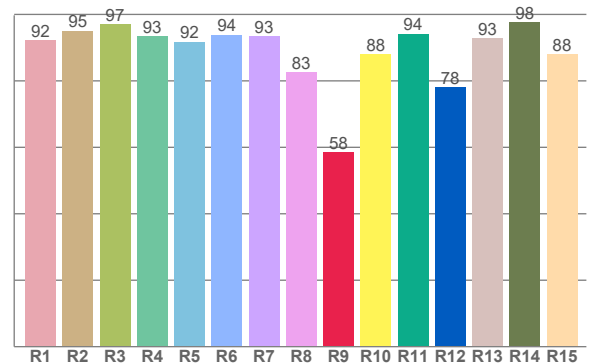
8/29/2022 5:58:52 PM

LUM: 1119

Spectra



CRI: 92.4 (R1-R8)



Color parameters

	Color rendering index	Red component	Color fidelity	Color gamut	Color quality scale	Color coordinate cie 1931	Color coordinate cie 1931	Color coordinate	Color coordinate	Color divition from black body
	CRI	CRI R9	TM30 R _f	TM30 R _g	CQS	x	y	u	v	Δuv
	92.4	58.4	91.9	99.0	91.3	0.432	0.406	0.246	0.348	0.0017

R_f 91.9

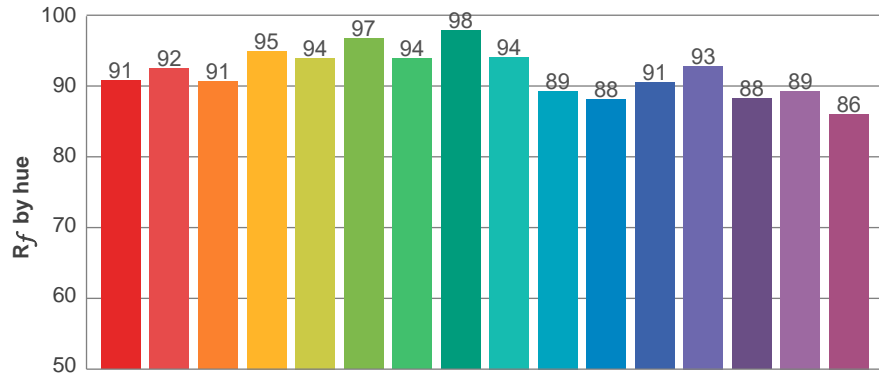
Fidelity index R_f

R_g 99.0

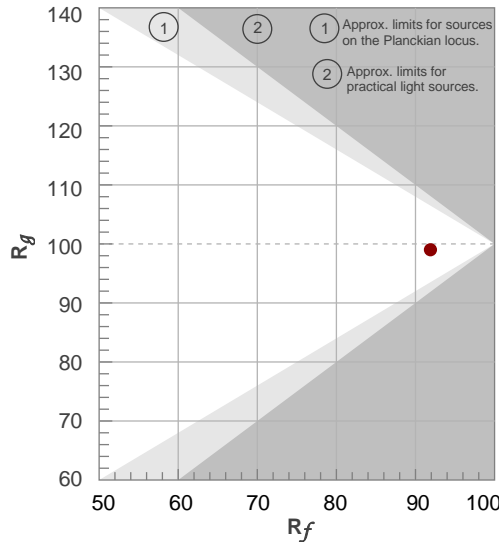
Gammut index R_g

TM30: 91.9

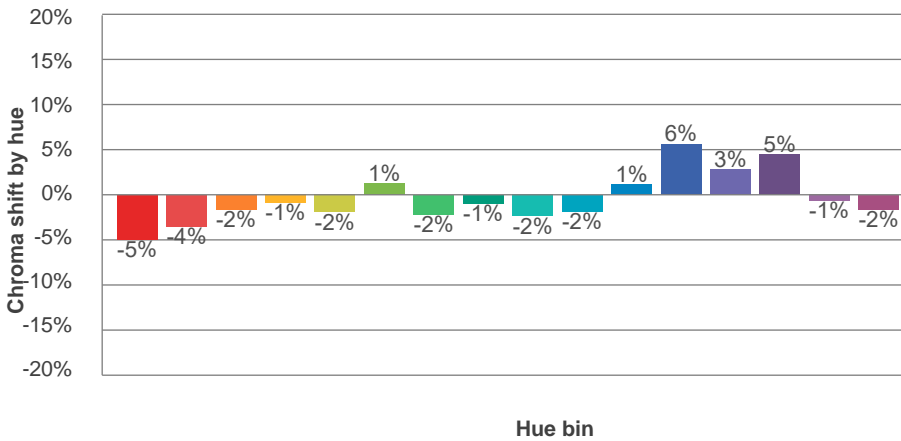
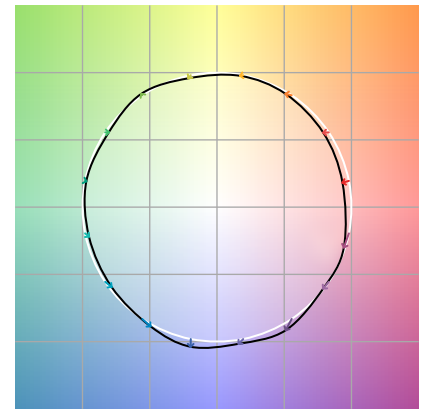
TM-30Color



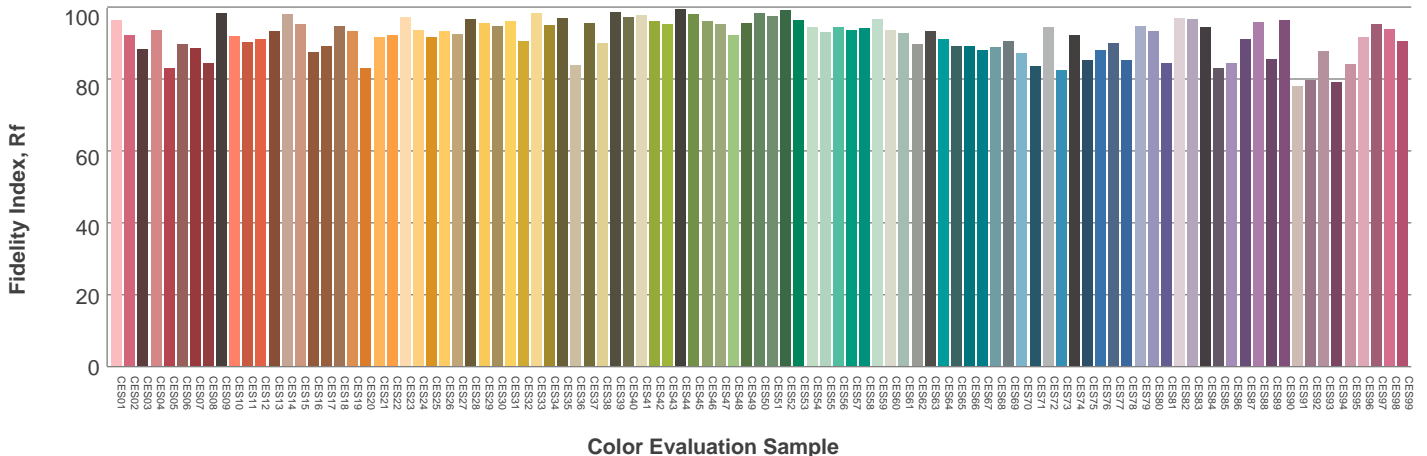
Hue Bin	R _f	Graphic shifts (%)	
		Chroma	Hue
1	91	-5%	0%
2	92	-4%	2%
3	91	-2%	4%
4	95	-1%	2%
5	94	-2%	2%
6	97	1%	0%
7	94	-2%	-2%
8	98	-1%	0%
9	94	-2%	3%
10	89	-2%	6%
11	88	1%	8%
12	91	6%	1%
13	93	3%	-4%
14	88	5%	-8%
15	89	-1%	-7%
16	86	-2%	-11%



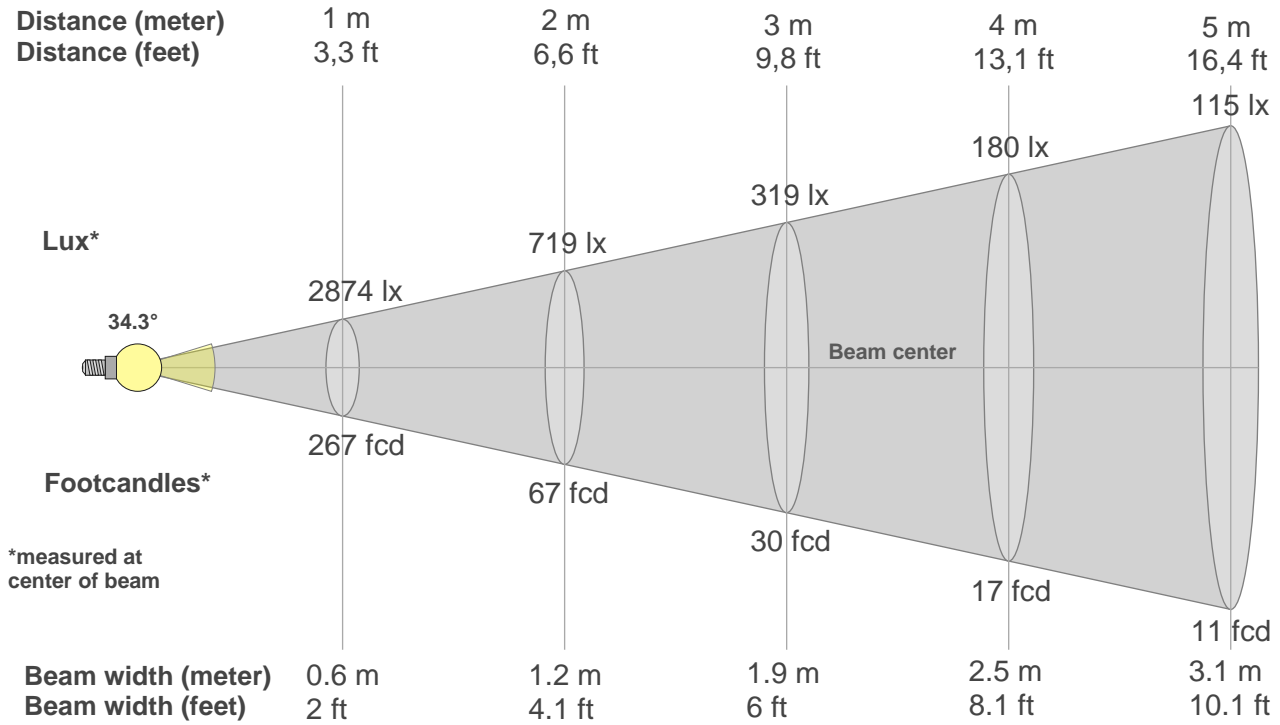
Color vector graphics



Color distortion



Beam details



Beam intensities from 1-20m

1m	2m	3m	4m	5m	6m	7m	8m	9m	10m	11m	12m	13m	14m	15m	16m	17m	18m	19m	20m
3.3ft	6.6ft	9.8ft	13.1ft	16.4ft	19.7ft	23ft	26.2ft	29.5ft	32.8ft	36.1ft	39.4ft	42.7ft	45.9ft	49.2ft	52.5ft	55.8ft	59.1ft	62.3ft	65.6ft
2874lx	719lx	319lx	180lx	115lx	80lx	59lx	45lx	35lx	29lx	24lx	20lx	17lx	15lx	13lx	11lx	10lx	9lx	8lx	7lx
267fcd	66.8fcd	29.7fcd	16.7fcd	10.7fcd	7.4fcd	5.4fcd	4.2fcd	3.3fcd	2.7fcd	2.2fcd	1.9fcd	1.6fcd	1.4fcd	1.2fcd	1fcd	0.9fcd	0.8fcd	0.7fcd	0.7fcd

Intensities in 0° c-plane

0°	2°	4°	6°	8°	10°	12°	14°	16°	18°	20°	22°	24°	26°	28°	30°	32°	34°	36°	38°
2874	2891	2951	2952	2848	2636	2337	2010	1688	1378	1091	839	676	569	437	269	97	29	8	4
100%	101%	103%	103%	99%	92%	81%	70%	59%	48%	38%	29%	24%	20%	15%	9%	3%	1%	0%	0%

Intensities in 90° c-plane

0°	2°	4°	6°	8°	10°	12°	14°	16°	18°	20°	22°	24°	26°	28°	30°	32°	34°	36°	38°
2874	2891	2951	2952	2848	2636	2337	2010	1688	1378	1091	839	676	569	437	269	97	29	8	4
100%	101%	103%	103%	99%	92%	81%	70%	59%	48%	38%	29%	24%	20%	15%	9%	3%	1%	0%	0%

Intensities in 180° c-plane

0°	2°	4°	6°	8°	10°	12°	14°	16°	18°	20°	22°	24°	26°	28°	30°	32°	34°	36°	38°
2874	2907	2963	3000	2911	2670	2359	2021	1688	1371	1086	855	688	581	506	355	190	59	8	5
100%	101%	103%	104%	101%	93%	82%	70%	59%	48%	38%	30%	24%	20%	18%	12%	7%	2%	0%	0%

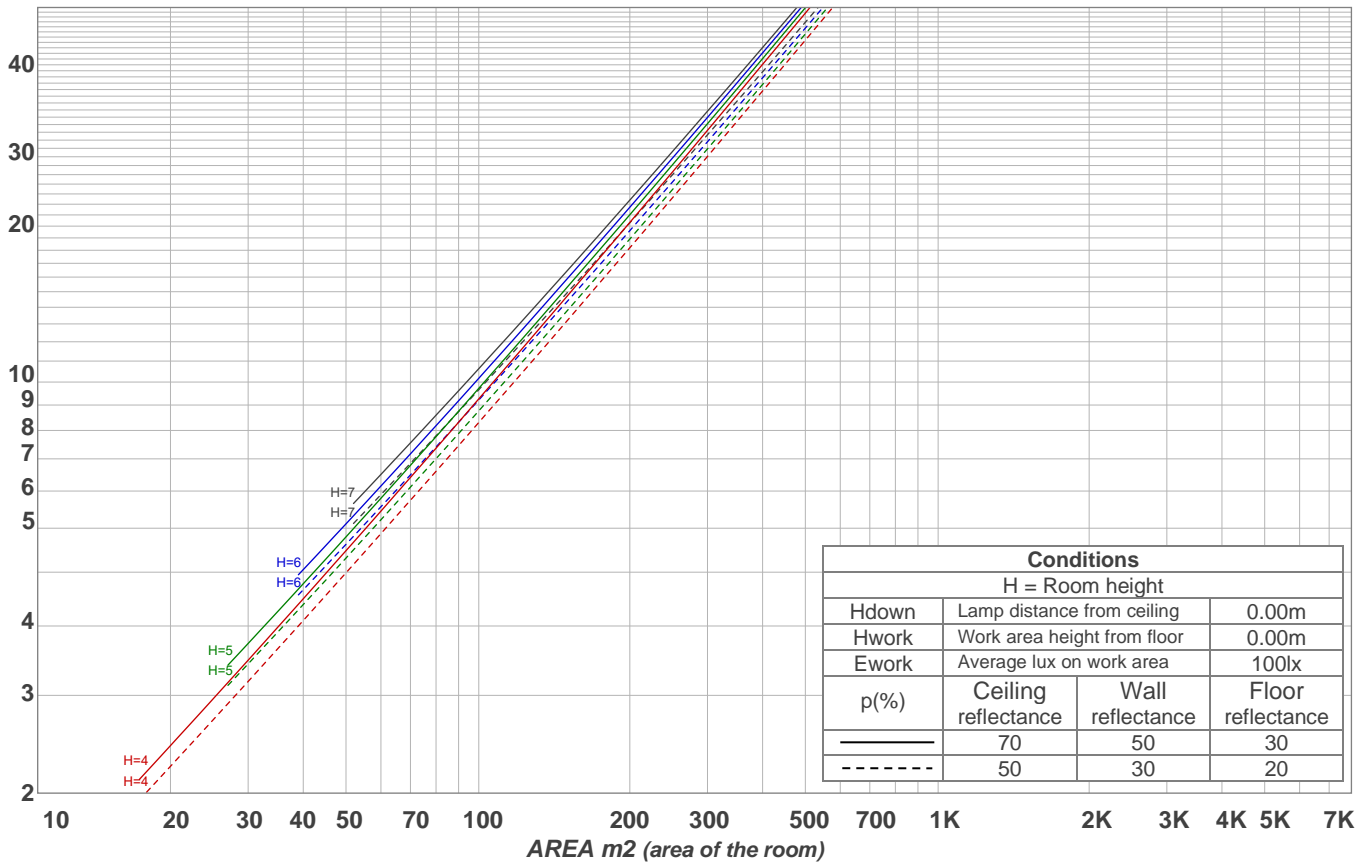
Intensities in 270° c-plane

0°	2°	4°	6°	8°	10°	12°	14°	16°	18°	20°	22°	24°	26°	28°	30°	32°	34°	36°	38°
2874	2907	2963	3000	2911	2670	2359	2021	1688	1371	1086	855	688	581	506	355	190	59	8	5
100%	101%	103%	104%	101%	93%	82%	70%	59%	48%	38%	30%	24%	20%	18%	12%	7%	2%	0%	0%

Beam angle 50%	Field angle 10%	Cutoff angle 2,5%	Intensity ratio in 120° cone	Intensity ratio in 90° cone
34.3°	60.3°	66°	99.4%	99.2%

LAMPS (number of lamps)
50

Light planning Luminaire budgetary diagram



Luminaire budgetary diagram AREA m2 (area of the room) Coefficients of Utilization

Ceiling reflectance	80				70				50			30			10			0			
Wall reflectance	70	50	30	10	70	50	30	10	50	30	10	50	30	10	50	30	10	50	30	10	0
Floor reflectance	20	20	20	20	20	20	20	20	20	20	20	20	20	20	20	20	20	20	20	20	0
RCR	(RCR: Room Cavity Ratio)																				
	Room Values are expressed as percentage of Lumens delivered to the task surface																				
0	119	119	119	119	116	116	116	116	111	111	111	106	106	106	102	102	102	100	100	100	
1	115	112	110	108	112	110	108	107	106	105	103	102	101	100	99	98	97	96	96	96	
2	110	106	103	100	108	105	102	99	102	99	97	99	97	95	96	95	93	92	92	92	
3	106	101	97	94	105	100	97	94	98	95	92	95	93	91	93	91	89	88	88	88	
4	103	97	93	89	101	96	92	89	94	90	88	92	89	87	90	88	86	85	85	85	
5	99	93	88	85	98	92	88	85	90	87	84	89	86	83	87	85	83	81	81	81	
6	96	89	84	81	95	88	84	81	87	83	80	86	82	80	85	82	79	78	78	78	
7	93	86	81	78	92	85	81	78	84	80	77	83	79	77	82	79	77	75	75	75	
8	90	82	78	75	89	82	78	75	81	77	74	80	77	74	79	76	74	73	73	73	
9	87	80	75	72	86	79	75	72	78	74	72	78	74	71	77	74	71	70	70	70	
10	84	77	72	69	83	76	72	69	76	72	69	75	72	69	74	71	69	68	68	68	

Zonal Lumen Summary

0°-10°	10°-20°	20°-30°	30°-40°	40°-50°	50°-60°	60°-70°	70°-80°	80°-90°
276 lm	502 lm	292 lm	38.7 lm	1.49 lm	1.37 lm	1.81 lm	2.27 lm	2.79 lm
90°-100°	100°-110°	110°-120°	120°-130°	130°-140°	140°-150°	150°-160°	160°-170°	170°-180°
0.000 lm	0.000 lm	0.000 lm	0.000 lm	0.000 lm	0.000 lm	0.000 lm	0.000 lm	0.000 lm