

Welcome to the Specialty Lighting Finish Guide. Here you will find out how to order a multitude of finishes beyond what is available as standard colors on our datasheets.

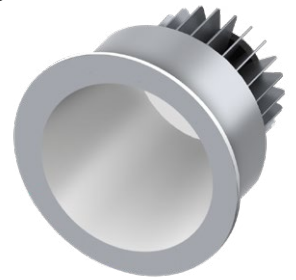
We offer four finish types: Powder Coat Paint, Anodized, Metalized and Special finishes. The following provides an overview of the process and their distinctive appearances.

Powder Coat Painting is a very common process in lighting and used to create a hard finish tougher than conventional paint. We use this for all our die cast trims and sheet metal housings. Powder Coat can also be applied to our milled or extruded aluminum products.

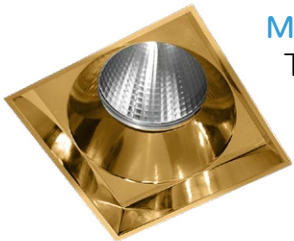


“B” and “W” ordering codes represent our standard Black and White powder coat paint finishes. A “P” designation is used for all other Specialty stocked paint finishes. Any RAL or Custom paint requests will utilize the powder coat process.

Anodized is a common finish used in lighting fixtures. The process turns the aluminum into a decorative, durable, corrosion-resistant, finish with many color options. The product will have a ‘level’ of gloss but will not be as specular as the metalized. We also offer a Matte version in all the color options where the ‘sheen’ or ‘gloss’ will be reduced. Anodize can only be applied to our milled or extruded aluminum products. This finish will be identified with an “A” or “AM” (Anodize Matte) designation within the ordering code. Most anodized parts can be powder coated if desired. Please contact your Regional sales manager if you do not see your desired option specified as Anodize.



Metalized is used on plastic or stamped metal parts and is done with vacuum deposition. The finish is used for reflector cones and other highly specular components. This is the most reflective and specular of our finishes and is limited in colors. It is featured in our Scope Wonder trim bezels. These finishes cannot be substituted with paint or anodize colors - sorry – you get what you get... Vacuum Metalize ordering codes will have a “V” designation.



Special Finishes are currently reserved for our elegant Picture lights and are coupled to the material selection of Brass, Bronze or Aluminum. These finishes have varying process but deliver rich and luxurious results. For example, our polished brass is manufactured with 100% brass, hand polished to a high gloss, and varnished. The polished brass can also be ordered without the varnish and will develop a patina over time. Similar processes are used with polished Nickel, for example, where a satin finish is created with a different polishing process.



RAL / Custom Color – RAL numbers can be selected, and of course custom colors can be formulated for project needs. Also note, in many cases our trims are field paintable. This could save time and money if you have a good painter on the project. Check with your Regional Sales Manager to determine if the desired trim is field paintable.



Custom
C

Here is how it works

There are 4 levels of finish options: Standard, Stock Colors, RAL # or Custom. Each finish type will be listed on the Specialty Datasheet with the following alpha characters:

- **B, W or P** – Black Powder Coat Paint , White or P01-P15 Powder Coat Paints- i.e., P10 is for Dull Brass
- **A** – Anodize – i.e., A32 for Clear Aluminum
- **B** – Brass finish options- i.e., B01 is for Polished Nickel
- **V** – Vacuum Metalize
- **L** – Aluminum finishes other than Anodize (L is used to not confuse with A for Anodize)

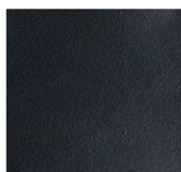
Standard - Each standard finish for the product will be listed on the datasheet with an alpha numeric ordering code corresponding to our colors shown below. We will provide a description under each code defining the type of process used to create the finish

PXX, AXX, VXX, BXX, LXX – There are simply too many color finishes to list in a column on our datasheet. The “XX” codes allow you to choose from an expanded array of color choices. These selections are stocked and formulated colors, creating reduced lead times from an RAL or custom color selection.

RAL# – RAL is a standard color matching system for paints. To select any of the 420 colors simply note the RAL number in the ordering code box.

Custom Color – This process requires a test sample to be sent to our factory. Once received we will run a test sample and send back for approval. Once signed off we will proceed with the order.

Powder Paint Colors PXX



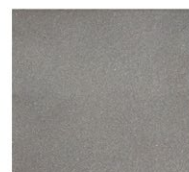
B
Black



W
White



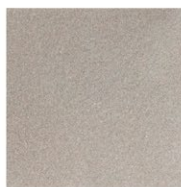
P01
Sterling Silver



P02
Nickel Silver



P03 Anodized
Aluminum



P06 Dark
Champagne



P07
Topper Gold



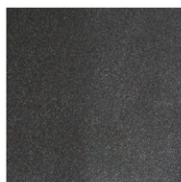
P09
Antique Brass



P10
Dull Brass



P11 Statuary
Bronze



P12
Roman Bronze



P13
Moog Bronze



P15
Bengal Silver

Anodized Aluminum (AXX) | Anodized Matte (AMXX)

| | | | | | |
|---|---|---|--|---|---|
|  |  |  |  |  |  |
| A01 AM01 Black | A02 AM02 Lime Green | A04 AM04 Green | A06 AM06 Forrest Green | A07 AM07 Olive Drab | A08 AM08 Pink |
|  |  |  |  |  |  |
| A09 AM09 Berry | A10 AM10 Dark Pink | A11 AM11 Purple | A12 AM12 Lavender | A13 AM13 Raspberry | A14 AM14 Violet |
|  |  |  |  |  |  |
| A15 AM15 Violet 3D | A16 AM16 Turquoise | A18 AM18 Light Blue | A19 AM19 Aqua Marine | A20 AM20 Blue | A21 AM21 Navy Blue |
|  |  |  |  |  |  |
| A22 AM22 Peach | A24 AM24 Bronze | A26 AM26 Gold | A28 AM28 Orange | A30 AM30 Red | A32 AM32 Clear |
|  |  |  | | | |
| A34 AM34 Grey | A36 AM36 Antique | A38 AM38 Brass | | | |

Vacuum Metalized VXX

Note: Matte Silver and White may increase glare values



V01
Clear Metalize



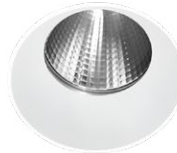
V02
Black Metalize



V04
Gold Metalize

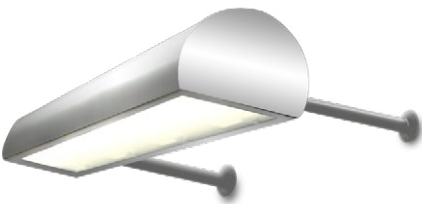


V05
Matte Silver Metalize



W
White as molded

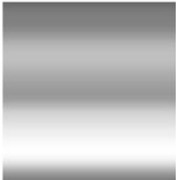
Formerly (MA1-MA8), these finishes are used on Specialty Picture Lights. If desired this finish can be used on some other aluminum-based fixtures. Ask you Regional Sales Manager if you would like to know more



L06
Oil Rubbed Bronze



L07
Satin Aluminum



L08
Polished Aluminum

Metalized finishes on Brass (B01-B07) are used on Specialty Picture Lights



B01
Polished Nickel



B02
Antique Nickel



B03
Polished Brass



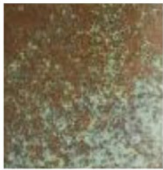
B04
Antique Bronze



B05
Satin Brass



B06
Oil Rubbed Bronze



B07
Unlacquered Brass
(simulated patina over time)